

**SAME San Diego Chapter**

**NAVFAC Southwest Update**  
**14 Dec 2022**

**CAPT Laurie Scott, PE**  
**Commanding Officer, NAVFAC Southwest**

*\*\* Data contained herein is based on the best available information and is subject to change*

# NAVFAC SYSCOM Mission



## OUR NORTH STAR

Drive performance and outcomes of SYSCOM Capabilities to effectively enable Fleet readiness and Marine Corps force generation

## OUR AUTHORITIES

Department of Defense (DoD) design and construction agent for military construction (MILCON)

10 U.S.C. Chapter 169, DODM 4270.5

Acquisition and program management of expeditionary engineering and logistics, and ocean facilities

SECNAVINST 5400.15D

Acquisition of design and construction, maintenance and facility operations, facility cybersecurity, real estate, environmental conservation and remediation, and non-tactical vehicles

SECNAVINST 5400.15D

Policy and oversight of the Department of Navy weight handling program

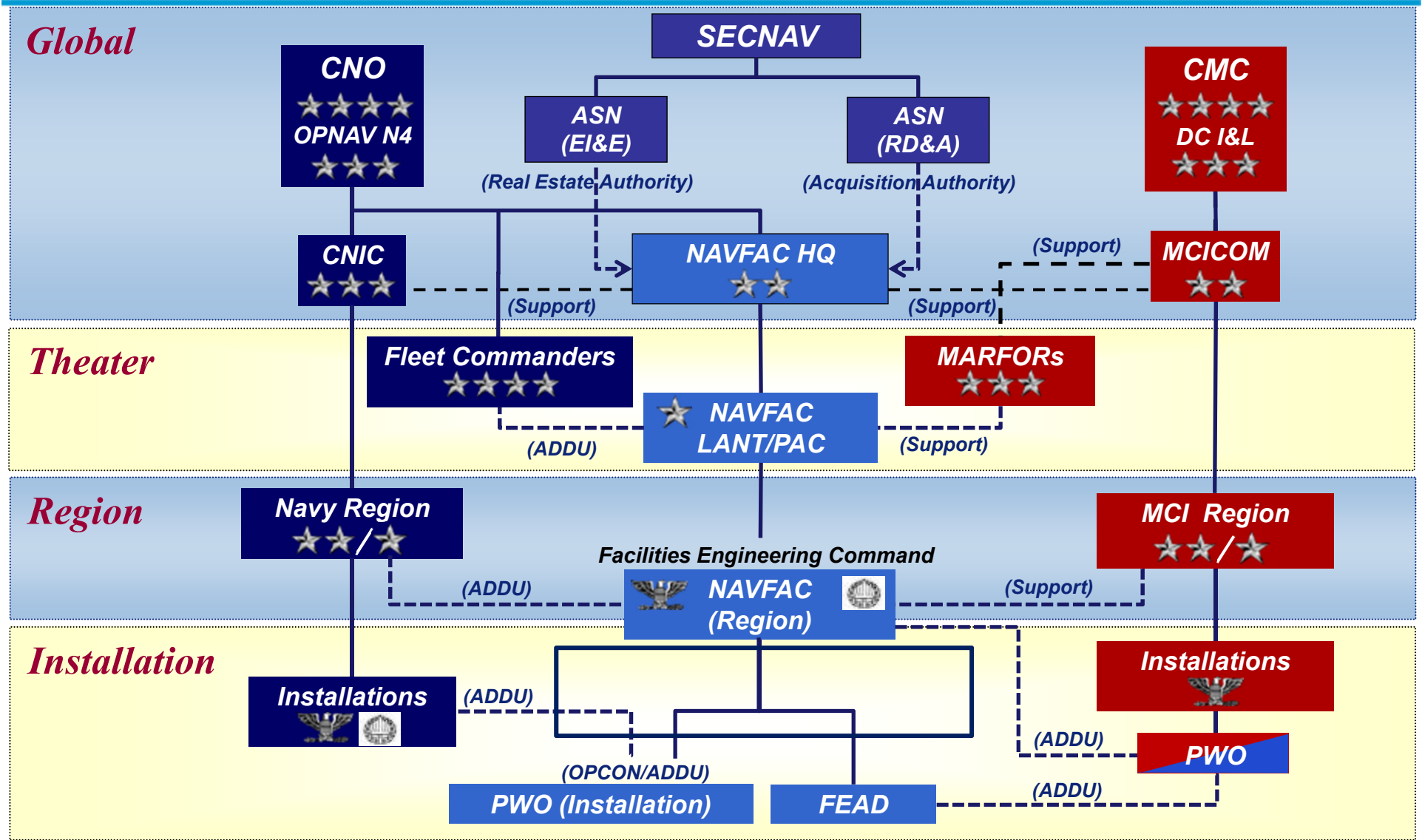
SECNAVINST 11260.2B

Acquisition, management, and disposal of real property

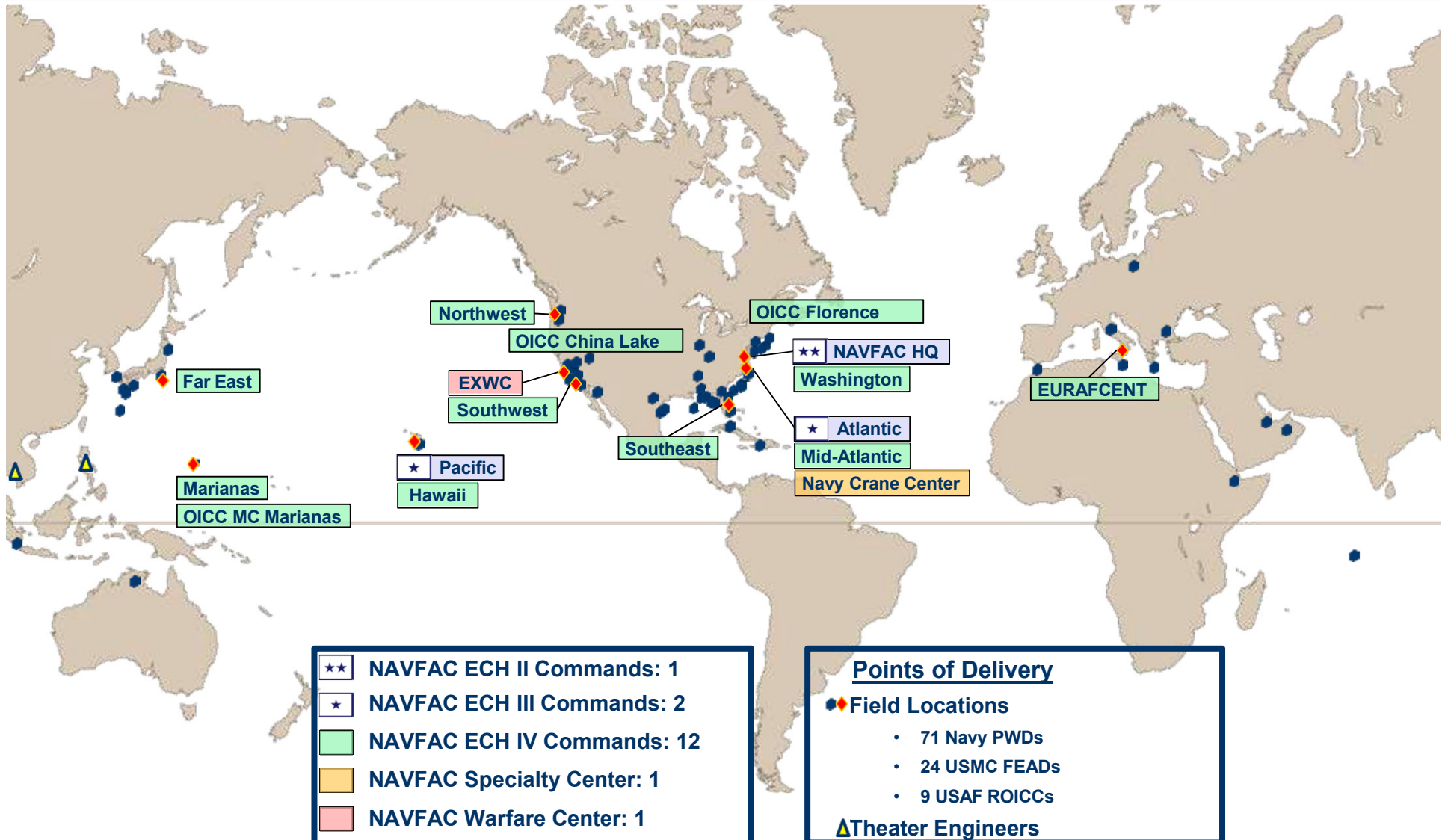
SECNAVINST 11011.47D



# NAVFAC Structural Alignment



# NAVFAC Global Laydown

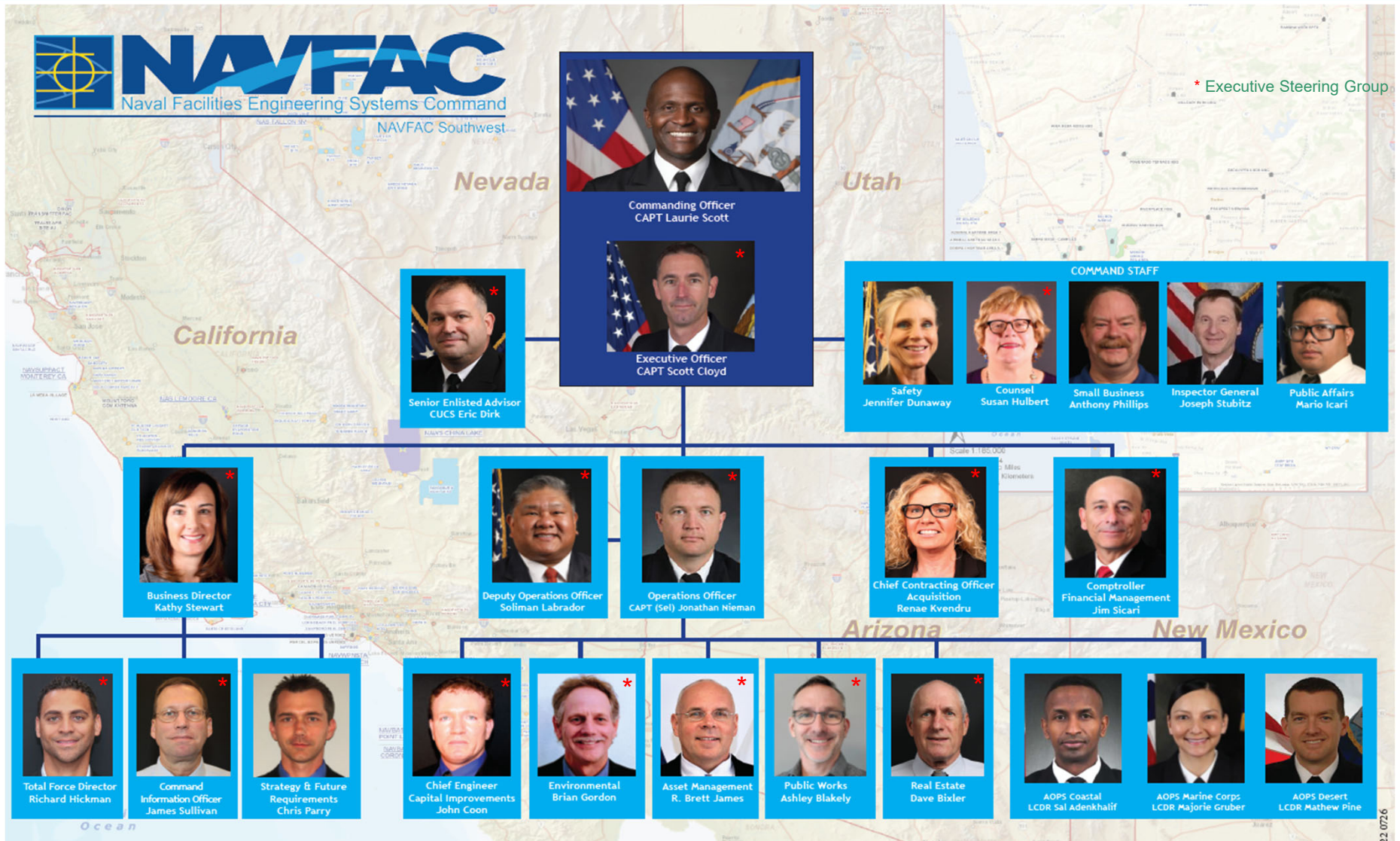


# NAVFAC Southwest Area of Responsibility



**~3,300 Civilians, ~140 Military, ~\$3B of Products & Services Executed Annually Across 6 States!**

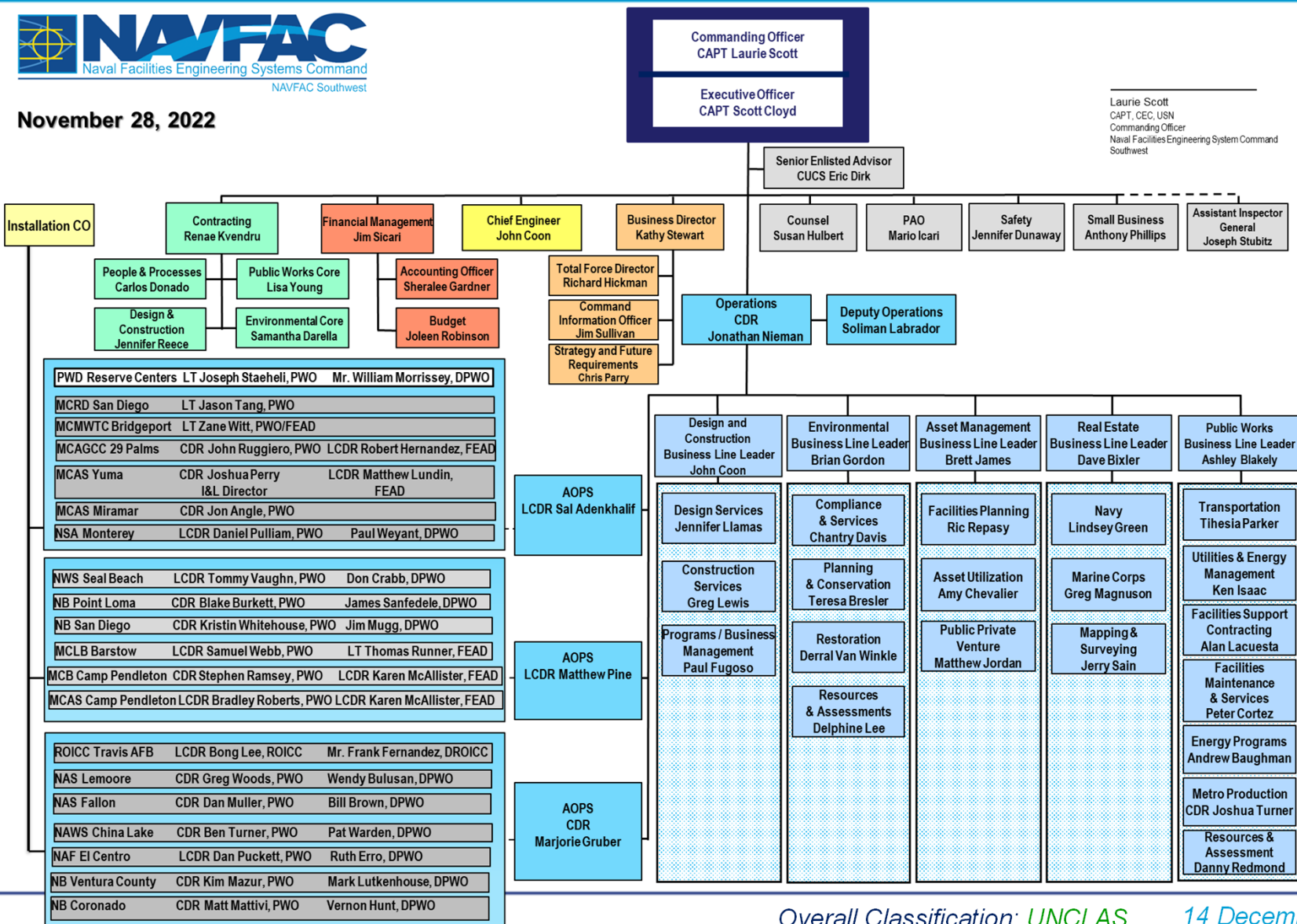
# NAVFAC Southwest Senior Leaders



# Execution Alignment



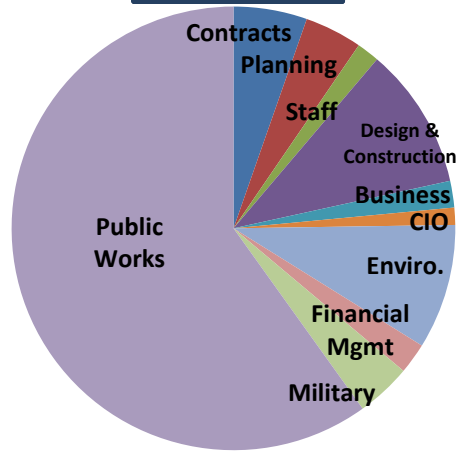
November 28, 2022



Laurie Scott  
CAPT, CEC, USN  
Commanding Officer  
Naval Facilities Engineering System Command  
Southwest

# Demographics

## Staffing



~3,300 Civilians and 140 Military at 19 locations

## NAVY

**10 Installations**  
**189 Special Areas**  
**11,000 facilities**  
**42 piers / wharves**  
**19 runways**  
**61 hangars**  
**1.8 M acres**  
**8 Small Arms Ranges**  
**17 Reserve Centers**  
**530 Tenant Commands**

## USMC

**8 Installations**  
**640 Training areas/ranges**  
**10,000 facilities**  
**6 landing beaches/docks**  
**12 runways**  
**30 hangars**  
**795,000 acres**  
**135 Small Arms Ranges**  
**81 Tenant Commands**

## USAF

**1 Installation**  
**1,725 facilities**  
**3 runways**  
**8 hangars**  
**6,400 acres**



## Major Programs

- Joint Strike Fighter
- Old Town Campus Revitalization
- Unmanned Systems
- Naval Special Warfare - Coastal Campus
- Fallon Range Training Complex
- OICC China Lake

## Core Competencies

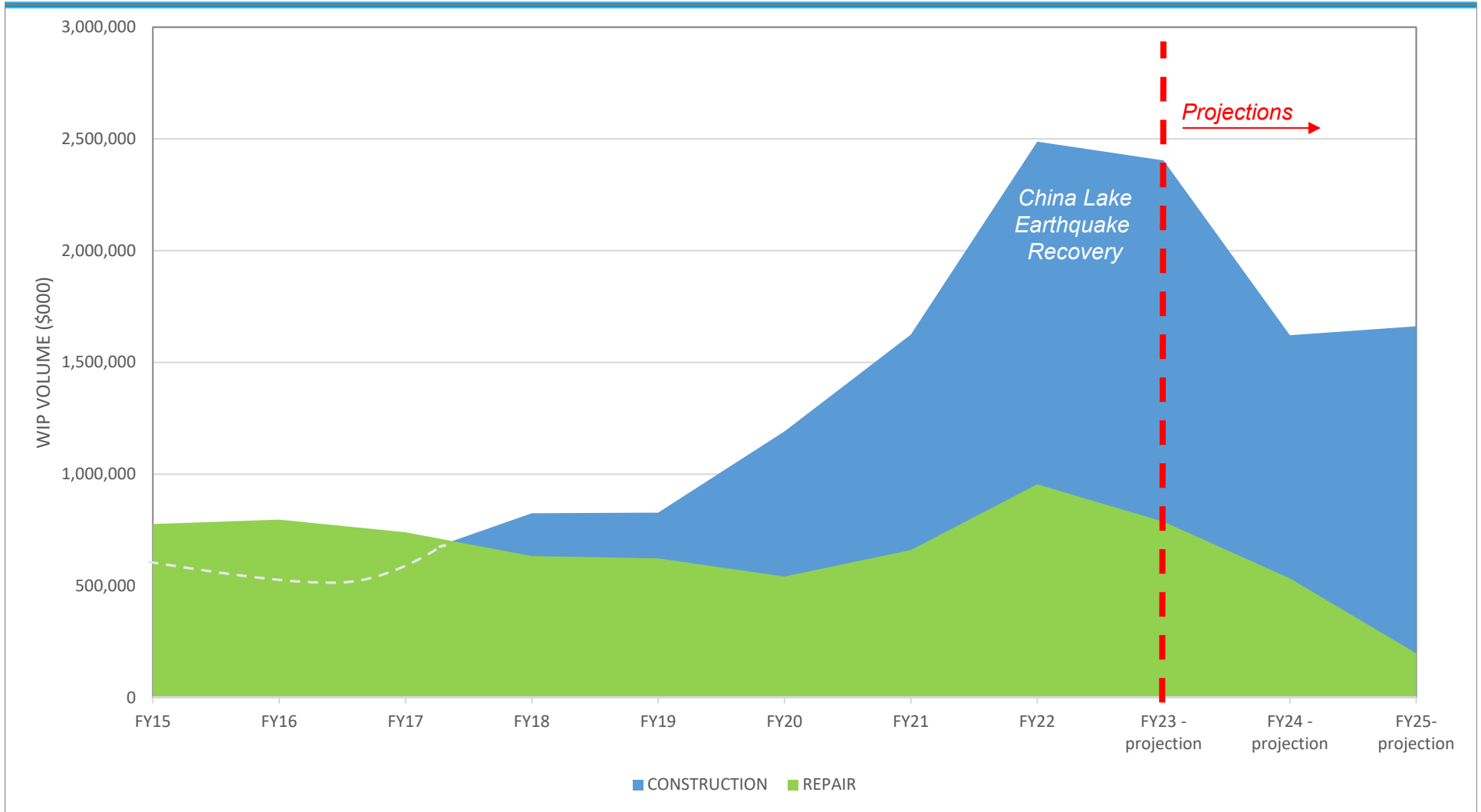
- Design, Repair & Construction
- Environmental Compliance & Restoration
- Facilities Planning, Operations & Sustainment
- Utilities and Energy Management
- Real Estate
- Transportation and Ship to Shore Support
- Specialized Technical Services

## Major Supported Commands

- NAVAIR
- NAVSEA
- NAVWAR
- NIWC
- 3rd Fleet
- I MEF
- Naval Special Warfare
- Strategic Systems Programs
- MCI West
- NRSW

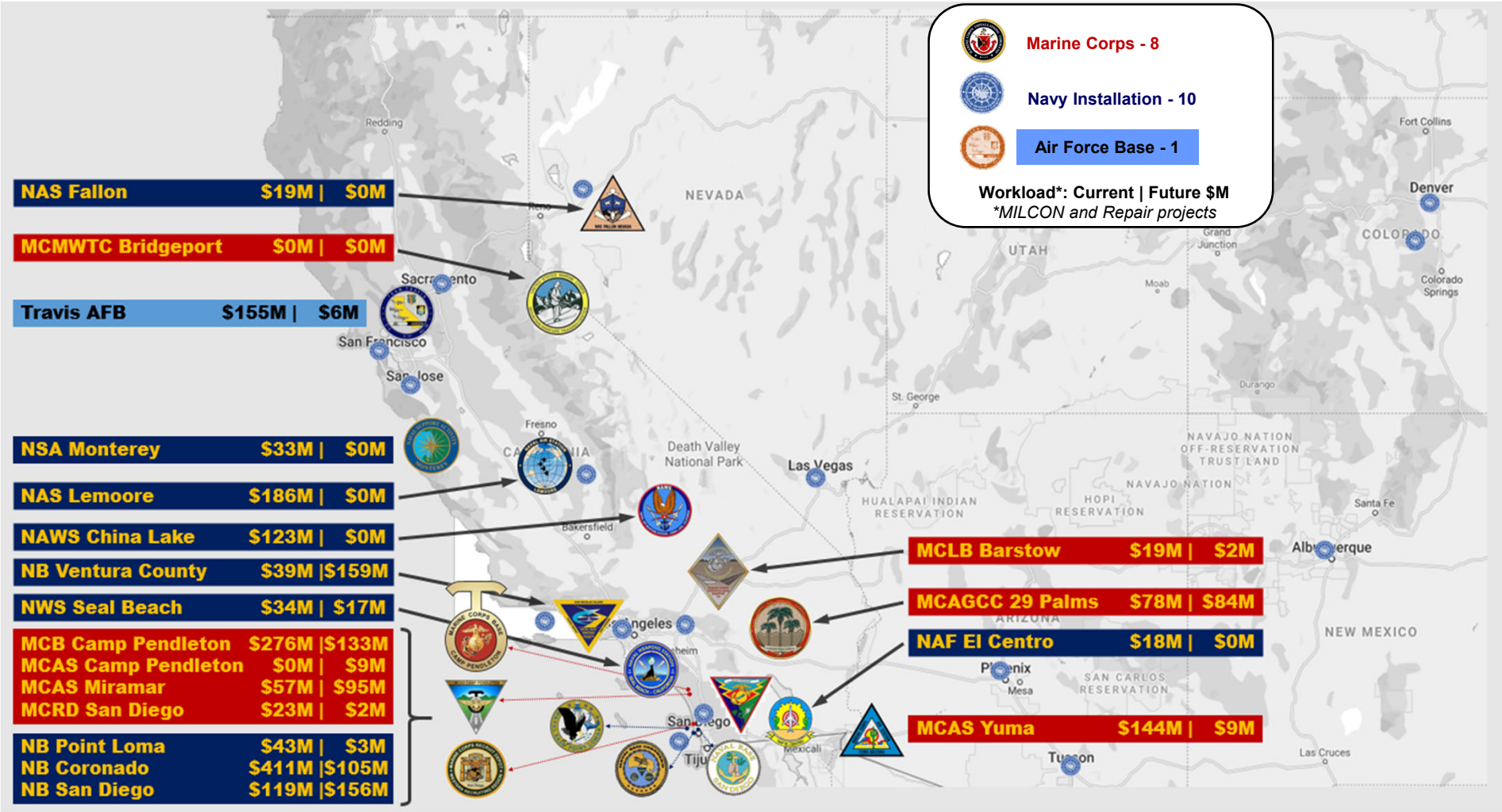


# Historical & Projected Work In Progress



\*MCON/MCNR and FSRM includes China Lake Earthquake Recovery

# NAVFAC Southwest Construction Footprint



**FY23 – FY24 Construction Workload @ \$2.5 Billion...Poised To Do More!**

# Major MILCON Programs



## SURFACE / SUBSURFACE WARFARE

Diagram illustrating various capabilities for Surface / Subsurface Warfare:

- LARGE USV
- MEDIUM USV
- PROTOTYPES
- RAZORBACK MUUV
- Unmanned Undersea Warfare
- Various FY20+
- Increase to 355 ships

Key capabilities shown in the diagram include: Standards, Autonomy, RAIL, Comms, UMMAX, CCS, Platform Integration, Advanced Autonomous Capabilities, Command & Control, Networks, and Entrenchment.

## KC-46

ROICC Travis AFB  
9 MILCONs  
2017-2032  
\$174M

## NAVAL SPECIAL WARFARE

Coastal Campus  
2015 - 2025  
29 MILCONs  
\$1B

## OICC CHINA LAKE

OICC CHINA LAKE  
2021-2025  
18 MILCONs  
\$2.2 B

## AVIATION WARFARE

West Coast JSF  
2015-2029  
23 MILCONs  
\$1.3B

## MARITIME SURVEILLANCE

Naval Base Ventura County  
2019-2024  
5 MILCONs  
\$250M

**Critical Programs ISO Military Readiness...Need All-In Partners**

# NAVY MILCON - Planned



| Location          | P-No  | Project Title                                     | Design Strategy | Program Amount | Planned RFP Release |
|-------------------|-------|---|-----------------|----------------|---------------------|
| NB Coronado       | 897   | CMV-22B Aircraft Maintenance Hangar               | DBB             | \$64M          | Q3 FY23             |
|                   | Q821  | SOF WARCOT Operations Support Facility            | DB              | \$76M          | Q3 FY23             |
|                   | Q822U | SOF POTFF Facility                                | DB              | \$6M           | Q3 FY23             |
|                   | 961U  | Integrated Training Facility                      | DB              | \$6M           | Q4 FY24             |
| NB San Diego      | 508   | Floating Dry Dock Mooring Facility                | DBB             | \$133M         | Q1 FY24             |
| NB Point Loma     | 636   | Child Development Center                          | DB              | \$57M          | Q2 FY23             |
| NB Ventura County | 615   | Ground Mounted Solar Photovoltaic System, SNI     | DB              | \$13M          | Q2 FY23             |
|                   | 535U  | Port Damage Repair Trainer                        | DB              | \$4M           | Q2 FY23             |
|                   | 491   | Combat Vehicle Maintenance Facility               | DB              | \$49M          | Q2 FY23             |
|                   | 025   | MQ-25A Aircraft Maintenance Hangar                | DBB             | \$149M         | Q3 FY23             |
|                   | 591   | Directed Energy Weapons Test Facilities           | DB              | \$20M          | Q2 FY24             |
| NAS Lemoore       | 351   | F-35C Aircraft Maint Hangar/Airfield Improvements | DBB             | \$201M         | Q2 FY23             |
| NAS Fallon        | 429   | F-35C Aircraft Maintenance Hangar                 | DBB             | \$98M          | Q2 FY23             |
|                   | 442   | Training Range Lang Acquisition                   | DB              | \$29M          | TBD                 |

*Data contained herein is based on the best available information and is subject to change*

# USMC MILCON - Planned



| Location           | P-No  | Project Title  | Design Strategy | Program Amount | Planned RFP Date |
|--------------------|-------|--|-----------------|----------------|------------------|
| MCB Camp Pendleton | 1983  | Veterinary Facility  | DBB             | \$16M          | Q2 FY23          |
|                    | 1111  | Basilone Road Realignment  | DB              | \$85M          | Q2 FY23          |
|                    | 2406U | G/ATOR Facilities 43 Area, Phase II  | DB              | \$4M           | Q3 FY23          |
|                    | 1241  | Warehouse Replacement  | DB              | \$22M          | Q4 FY23          |
| MCAS Yuma          | 595U  | Water Treatment Plant Upgrades   | DB              | \$4M           | Q2 FY23          |
|                    | 538   | Bachelor Enlisted Quarters   | DB              | \$100M         | Q4 FY23          |
|                    | 528   | Combat Training Tank Complex   | DB              | \$29M          | Q4 FY23          |
| MCAS Miramar       | 201   | Aircraft Maintenance Hangar  | DBB             | \$210M         | Q3 FY23          |
|                    | 254   | F-35C Centralized Engine Repair Facility                                       | DBB             | \$31M          | Q4 FY23          |
| MCAGCC 29 Palms    | 480   | Electrical Power Infrastructure Upgrades (ERCIP)                               | DB              | \$5M           | Q2 FY23          |
|                    | 481   | Energy Resilience, PH 3/4  | DB              | \$23M          | Q2 FY23          |
|                    | 1238  | Construction of Grid Stability & Resiliency 10 MW                              | DB              | \$11M          | Q2 FY23          |
|                    | 924   | Battery Energy Storage, Various Buildings                                      | DB              | \$120M         | Q3 FY23          |
|                    | 1231  | Range Simulation Training & Operations Building<br>Waste Water Treatment Plant | DB<br>DB        | \$77M          | TBD              |
| MCRD San Diego     | 317U  | Expand Recruit Clothing Issue Warehouse  | DB              | \$2M           | Q2 FY23          |
|                    | 315   | Recruit Mess Hall Replacement  | DBB             | \$94M          | Q4 FY23          |

*Data contained herein is based on the best available information and is subject to change*

# Partnership Opportunities



| Commercial & Industrial MACC  | Waterfront MACC   | Hubzone General Construction MACC  | Medical Facility Construction MACC  | Airfield Paving MACC   |
|---|---|--|---|--|
| \$2.5B Capacity / \$707M Avail  | \$750M Capacity / \$638M Avail  | \$495M Capacity / \$452M Avail   | \$1.0B Capacity / \$892M Avail  | \$495M Capacity / \$168M Avail   |
| <ul style="list-style-type: none"> <li>BALFOUR BEATTY CONSTRUCTION, LLC</li> <li>B.L. HARBERT INTERNATIONAL, L.L.C.</li> <li>CLARK CONSTRUCTION GROUP-CALIFORNIALP</li> <li>ECC INFRASTRUCTURE LLC</li> <li>HARPER CONSTRUCTION COMPANY, INC</li> <li>HEFFLER CONTRACTING GROUP</li> <li>KORTE CONSTRUCTION COMPANY</li> <li>M A MORTENSON COMPANY</li> <li>R A BURCH CONSTRUCTION CO INC</li> <li>RQ CONSTRUCTION, LLC</li> <li>SUNDT CONSTRUCTION, INC.</li> <li>WALSH FEDERAL, LLC</li> <li>WEBCOR CONSTRUCTION LP</li> <li>WHITING-TURNER CONTRACTING COMPANY, THE</li> </ul> | <ul style="list-style-type: none"> <li>DoD MARINE CONSTRUCTORS, JV</li> <li>THE DUTRA GROUP</li> <li>GRANITE-HEALY TIBBITTS, JV</li> <li>MANSON CONSTRUCTION CO.</li> <li>MARATHON CONSTRUCTION CORP.</li> <li>R.E. STAITE ENGINEERING, INC.</li> <li>REYES CONSTRUCTION, INC.</li> <li>TNT CONSTRUCTORS</li> </ul> | <ul style="list-style-type: none"> <li>I E PACIFIC INC</li> <li>PACIFIC WEST BUILDERS</li> <li>VANDER WERFF, PETER CONSTRUCTION</li> <li>HEFFLER CONTRACTING GROUP</li> <li>SEA PAC ENGINEERING, INC</li> <li>INTERCONTINENTAL CNSTR CONTG</li> <li>SGS, L.L.C.</li> <li>SHORE HERMAN JV</li> <li>CJW JOINT VENTURE</li> </ul> | <ul style="list-style-type: none"> <li>DPR-RQ CONSTRUCTION, LLC</li> <li>GILBANE FEDERAL JV</li> <li>HENSEL PHELPS CONSTRUCTION CO</li> <li>KIEWIT BUILDING GROUP, INC</li> <li>THE ROBINS &amp; MORTON GROUP</li> <li>STRUCTSURE PROJECTS, INC.</li> <li>WALSH CONSTRUCTION COMPANY II, LLC</li> </ul> | <ul style="list-style-type: none"> <li>GRANITE CONSTRUCTION</li> <li>BALDI BROS., INC</li> <li>COFFMAN SPECIALTIES, INC</li> <li>PAVE-TECH, INC</li> <li>SOUTHWEST CONCRETE PAVING</li> </ul>  |
|   |   |  |   | <b>Dry Utilities SB MACC</b>   |
|   |   |  |   | \$334 Capacity / \$61M Avail   |
|   |   |  |   | <ul style="list-style-type: none"> <li>FORTIS NOVA A JV, LLC</li> <li>GALINDO ELECTRIC, INC.</li> <li>POWERE PRO PLUS INC.</li> <li>SOUZA CONSTRUCTION, INC.</li> <li>SYNERGY ELECTRIC COMPANY, INC.</li> <li>TRI-TECHNIC, INC.</li> </ul> |

# Future Construction MACC Opportunities



| Title                          | Type | Capacity | Est. Award Date |
|--------------------------------|------|----------|-----------------|
| Secure Spaces                  | UR   | \$249M   | DEC FY23        |
| Heavy Horizontal               | UR   | \$1.0B   | Q2 FY23         |
| Dry Utilities                  | SB   | \$495M   | Q2 FY23         |
| Fuels – POL & Gas              | UR   | \$150M   | Q2 FY23         |
| Demolition                     | UR   | \$249M   | Q2 FY23         |
| Building/ General Construction | 8a   | \$349M   | Q3 FY23         |

*Data contained herein is based on the best available information and is subject to change*

# Architect/Engineering IDIQ Contracts



| CURRENT<br>A-E IDIQ Contracts                        |  |
|--|--|
| Title  | Firm                                     |
| <i>Multidisciplinary, SB</i>                         | TECHTONICS, dba Andrew C Chen            |
| <i>Multidisciplinary MILCON, Unrestricted</i>        | JACOBS EWINGCOLE JV                      |
| <i>Civil, Unrestricted</i>                           | MICHAEL BAKER INTERNATIONAL, INC.        |
| <i>Builders Facilities Assessments, MC Worldwide</i> | CARDNO-AMEC FOSTER WHEELER               |
| <i>Cost, Scheduling, TIAs, SB</i>                    | HUNTER PACIFIC GROUP                     |
| <i>Geotechnical, 8(a)</i>                            | DEL MAR ENVIRONMENTAL & CONSTRUCTION     |
| <i>Elect/Mech/FP, SB</i>                             | MA ENGINEERS JV                          |
| <i>Encroachment Services</i>                         | CARDNO GS, INC                           |
| <i>Waterfront, Unrestricted</i>                      | GHD-COWI JV                              |
| <i>Structural, SB</i>                                | REID MIDDLETON INC                       |
| <i>Facility Planning, SB</i>                         | MAKERS ARCHITECTURE AND URBAN DESIGN LLP |

| FUTURE<br>A-E IDIQ Contracts        |      |          |                 |
|-------------------------------------|------|----------|-----------------|
| Title                               | Type | Capacity | Est. Award Date |
| <i>Architect (Multi-Discipline)</i> | UR   | \$249M   | Jan FY23        |
| <i>Surveying and Mapping</i>        | UR   | \$10M    | Mar FY23        |
| <i>MEP/FP</i>                       | 8(a) | \$40M    | Jun FY23        |
| <i>Civil</i>                        | 8(a) | \$20M    | Jun FY23        |

Data contained herein is based on the best available information and is subject to change



# Current Environmental Partners



| Compliance   | Natural Resources   | Cultural Resources  | Restoration  |
|--|---|---|--|
| \$446M avail   | \$44M avail   | \$13M avail   | \$580M avail   |
| <b>Compliance:</b><br><ul style="list-style-type: none"> <li>MULTI-MEDIA ENV COMPLIANCE GROUP</li> </ul> | <b>Natural Res MAC:</b><br><ul style="list-style-type: none"> <li>VERNADERO GROUP</li> <li>GSRC</li> <li>BIORESOURCE CONS</li> <li>HERCULES JV</li> </ul>                                   | <b>Cultural Resources MAC:</b><br><ul style="list-style-type: none"> <li>FAR WESTERN</li> <li>PALEOWEST, L.L.C</li> <li>STATISTICAL RESEARCH</li> <li>ULTRASYSTEMS ENVIRONMENTAL INC</li> </ul> | <b>RADMAC:</b><br><ul style="list-style-type: none"> <li>GILBANE FEDERAL</li> <li>APTIM FEDERAL SERVICES</li> <li>AECOM-ENERGY SOLNS JV</li> <li>TETRA TECH EC</li> <li>WOOD</li> <li>ECC INSIGHT PHILOTECHNICS</li> </ul> |
| <b>Stormwater:</b><br><ul style="list-style-type: none"> <li>NICKLAUS AMEC JV</li> </ul>                 | <b>Marine Habitat MAC:</b><br><ul style="list-style-type: none"> <li>TIERRA DATA INC</li> <li>MERKEL &amp; ASSOCIATES</li> <li>MILLER MARINE</li> <li>APPLIED MARINE SCIENCES JV</li> </ul> | <b>Curation:</b><br><ul style="list-style-type: none"> <li>SD ARCHAEOLOGICAL CNTR</li> </ul>  | <b>MARAC:</b><br><ul style="list-style-type: none"> <li>TFS-APTIM JV LLC</li> <li>BETHEL-TECH PACIFIC JV</li> <li>NORTH WIND-CDM JV</li> <li>OCH, JV</li> <li>EA-AMEC FOSTER WHEELER JV</li> </ul>                         |
| <b>OHS:</b><br><ul style="list-style-type: none"> <li>BLACK GOLD INDUSTRIES</li> </ul>                   | <b>Habitat Enhancement MAC:</b><br><ul style="list-style-type: none"> <li>IO ENV &amp; INFRASTRUCT</li> <li>PATRIOT JOINT VENTURE</li> </ul>  |   | <b>SB EMAC:</b><br><ul style="list-style-type: none"> <li>BETHEL-TECH PACIFIC JV</li> <li>ECC ENVIRONMENTAL</li> <li>CAPE-WESTON JV1</li> <li>INSIGHT TIDEWATER</li> <li>NOREAS APTIM JV</li> </ul>                        |
| <b>Spill Response:</b><br><ul style="list-style-type: none"> <li>G2RJ INC DBA TREVET</li> </ul>          | <b>MCAGCC Training Support:</b><br><ul style="list-style-type: none"> <li>VERNADERO GROUP</li> </ul>  |   | <b>8(a) EMAC:</b><br><ul style="list-style-type: none"> <li>DELMAR-TREVET JV</li> <li>BETHEL-TECH JV</li> <li>SRS-ERRG JV</li> <li>AES-CAPE JV</li> <li>BODHI-TIDEWATER JV1</li> </ul>                                     |
| <b>Lab Services:</b><br><ul style="list-style-type: none"> <li>APTIM</li> </ul>                          |   |   | <b>CERCLA/RCRA:</b><br><ul style="list-style-type: none"> <li>TREVET-BAY WEST JV</li> </ul>  |

**Others:**

- Range: MANTECH SRS Technologies (**\$82M avail**)
- NEPA: Adanta Inc (**\$2.4M avail**)

Data contained herein is based on the best available information and is subject to change

# Navy Old Town Campus (OTC) Revitalization



- **Navy project to repair or replace obsolete WW II B-24 Bomber Factories on the 70.3-acre Naval Base Point Loma OTC**
  - Provide ~1.7M SF of secure, safe, mission-capable state-of-the art facilities for NAVWAR
- **Revitalization could occur through Navy-funded development or through a public-private partnership.**
  - Public-private options could benefit San Diego through potential development of housing, retail, commercial, and transit center
- **A Draft Environmental Impact Statement (EIS) was prepared to evaluate the modernization of OTC**
  - In response to comments received on the Draft EIS, the Navy intends to identify – through a competitive solicitation process – a potential master developer that can work with the Navy to develop more site-specific details before a final alternative is selected
  - The development plans will help inform the Navy’s required environmental analyses

## Urgent Mission Requirement



- **Key location near freeways, airport, and Downtown San Diego**
- **NAVWAR generates *more than \$3.5B* and *29,000 jobs* in San Diego**

## WHAT'S NEXT?

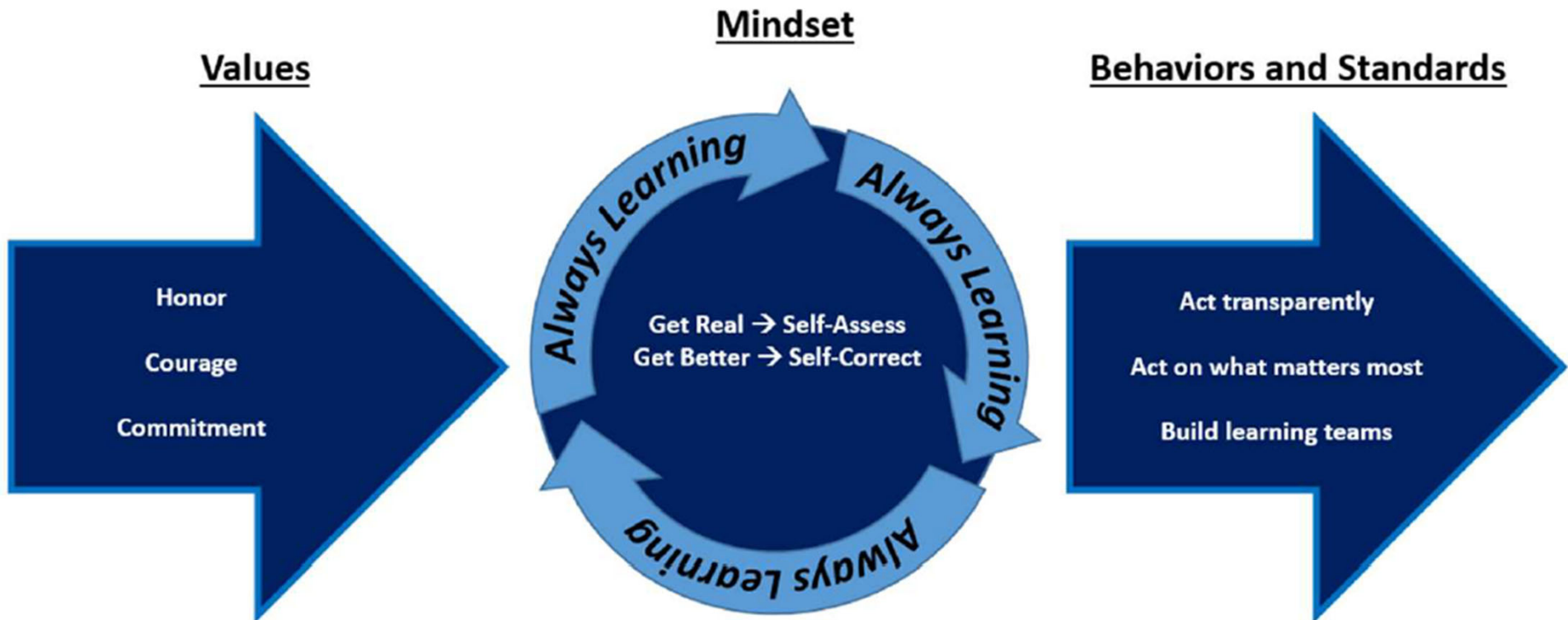
- **Deadline for proposers to submit questions for the solicitation: January 24, 2023**

## WHERE CAN I GET MORE INFORMATION?

- **Visit the website and sign up for our email list [www.NAVWAR-Revitalization.com](http://www.NAVWAR-Revitalization.com)**



# « GET REAL GET BETTER »



**Building enduring advantages** in a complex, rapidly changing threat environment demands a **warfighting culture focused on continuous improvement**

-CNO Navigation Plan 2022

<https://www.navy.mil/Resources/Blogs/Detail/Article/2894808/get-real-get-better/>

# Perform to Plan (P2P) Initiatives



- **Issue Resolution Ladders**
- **Partnering**
- **Joint Scoping**
- **Early Contractor Involvement (ECI)**
- **Embracing eCMS**
- **Construction Manager Training**

# Issue Resolution Ladder and Partnering



| Action/<br>Awareness<br>Level | Government Team:<br><<Insert Project Delivery Field Office>>   | Contractor Team:<br><<Insert Contractor>>   | Supported Command(s):<br><<Insert Mission/Support<br>Command(s)>>   | Risk            |
|-------------------------------|--|---|---|-----------------|
| Flag                          | <ul style="list-style-type: none"> <li>Commander, NAVFAC PAC</li> <li>Commanding Officer, NAVFAC SW</li> </ul>   | <ul style="list-style-type: none"> <li>Chief Executive Officer / President</li> </ul>   | <ul style="list-style-type: none"> <li>General/Flag Officer / SES</li> </ul>  | Extreme         |
| Executive                     | <ul style="list-style-type: none"> <li>Commanding Officer, NAVFAC SW</li> <li>Executive Officer, NAVFAC SW</li> <li>Chief Engineer, NAVFAC SW</li> <li>Chief of Contracting, NAVFAC SW</li> <li>Operations Officer, NAVFAC SW</li> </ul>   | <ul style="list-style-type: none"> <li>Chief Executive Officer / President</li> <li>Vice President</li> </ul>   | <ul style="list-style-type: none"> <li>O-6 / GS-15+ Executives</li> </ul>   | High to Extreme |
| Senior Leadership             | <ul style="list-style-type: none"> <li>Operations Officer, NAVFAC SW</li> <li>Deputy Operations Officer, NAVFAC SW</li> <li>Assistant Operations Officer, NAVFAC SW</li> <li>Program/Portfolio Manager, NAVFAC SW</li> <li>Design &amp; Engineering Director, NAVFAC SW</li> <li>Design Production Director, NAVFAC SW</li> <li>Public Works Officer</li> <li>FEAD Director</li> </ul> | <ul style="list-style-type: none"> <li>Vice President</li> <li>Senior Project Manager</li> <li>Senior Design Manager</li> </ul>   | <ul style="list-style-type: none"> <li>O-5 / GS-14+ Senior Leaders</li> </ul>   | Medium to High  |
| Project Delivery              | <ul style="list-style-type: none"> <li>FEAD Director</li> <li>Supervisory General Engineer</li> <li>Supervisory Contracting Officer</li> <li>Program Manager, NAVFAC SW (if applicable)</li> <li>Project Manager, NAVFAC SW</li> <li>Design Manager, NAVFAC SW</li> <li>Construction Manager</li> <li>Contract Specialist</li> </ul>   | <ul style="list-style-type: none"> <li>Site Project Manager</li> <li>Design Manager</li> <li>Quality Control Manager</li> <li>Site Superintendent</li> <li>Assistant Superintendent(s)</li> <li>Site Safety and Health Officer</li> </ul> | <ul style="list-style-type: none"> <li>Supported Command Team(s) that Project Delivery Team (PDT) interacts with daily/regularly</li> </ul> | Low to Medium   |

## Tenets of Partnering

- The constant iteration of action and awareness at the various levels drives desired outcomes for all parties
  - Alignment of common goals and objectives
  - Collaboration on risk mitigation strategies
  - Sharing of Key Performance Indicators (KPIs)
  - Personal commitments
  - Timely resolution of issues
- There is not a pre-award/post-award divide in the government team. While primacy of effort may shift, FEC PMs and DMs, and everyone in the FEAD, and are responsible for project delivery from cradle-to-CCB
- Demands regular senior and executive level communication (even on high-performing efforts) to build trust
  - Quarterly Community of Contractors Forum
  - Authentic partnering is best achieved via sustained 3rd Party facilitators
- The nominal template to the left must be:
  - Customized/updated with by-name call-outs
  - Supplemented with a contact roster with both email and phone details for by-name call-outs
  - Aligned with Stakeholder Agreement POCs.

**Communication and Partnering Drives Successful Outcomes**

# eCMS



## **COMMANDER'S INTENT: "We are all in with eCMS!"**

### **• Benefits**

- Cloud Based:
  - Provides all users (Government and Contractor) access to the same project documents
  - Intuitive and easy to update in real time
  - Transparency improves level of Government oversight
- Owners Module allows users to collaborate publicly and privately
  - Contractors can still use their own system to manage their internal efforts
- Reduces reliance on emails and spreadsheets
  - Ability to have consolidated and referenced documentation in a central repository
- Personalized training/support by NAVFAC SW and NAVFAC PAC

### **• eCMS User Summit for NFSW Construction Managers and Engineering Technicians held 5-6 Dec**

- Forum for Users to train other Users

***Maximum eCMS usage = Maximum Efficiency***

# Contact Info For Opportunities and Process



## NAVFAC Southwest Contracting

**Ms. Renae A. Kvendru**  
Chief of the Contracting Office  
NAVFAC Southwest  
[renae.a.kvendru.civ@us.navy.mil](mailto:renae.a.kvendru.civ@us.navy.mil)

**Ms. Jennifer Reece**  
Director, Design & Construction Contracting  
NAVFAC Southwest  
[jennifer.m.reece.civ@us.navy.mil](mailto:jennifer.m.reece.civ@us.navy.mil)

## NAVFAC Small Business

**Ms. Regina Pasqualucci**  
Deputy for Small Business  
NAVFAC Pacific  
[Regina.k.pasqualucci.civ@us.navy.mil](mailto:Regina.k.pasqualucci.civ@us.navy.mil)

**Mr. Anthony Phillips**  
Assistant Deputy for Small Business  
NAVFAC Southwest  
[Anthony.j.phillips14.civ@us.navy.mil](mailto:Anthony.j.phillips14.civ@us.navy.mil)





# Useful Website Links



- **NAVFAC Southwest Public website:**
  - <https://pacific.navfac.navy.mil/Facilities-Engineering-Commands/NAVFAC-Southwest/>
  
- **NAVFAC Small Business website:**
  - <https://www.navfac.navy.mil/Business-Lines/Office-of-Small-Business-Programs/>
  
- **Federal agencies procurement forecasts:**
  - <https://www.acquisition.gov/procurement-forecasts>
  
- **U.S Government Departments and Agencies:**
  - <https://www.usa.gov/federal-agencies>



# Questions?

