

SAME

Camp Pendleton Day

NAVFAC Southwest Update

CAPT Michael Oestereicher, P.E.
Civil Engineer Corps, United States Navy
Commanding Officer, NAVFAC Southwest

*** Data contained herein is based on the best available information and is subject to change*

Challenges facing the Navy - “Four Cs”

- China

Most significant challenge for the Navy. People’s Liberation Army Navy (PLAN) has expanded both in size and capabilities, growing to become the world’s largest fleet.

- Culture

Tackling sexual assault and harassment, promoting diversity, equity and inclusion, preventing suicide, demanding integrity and accountability across naval leadership.

- Climate Change

Poses a rapidly intensifying spectrum of risks to our operating environment, our allies and partners, and our planet.

- COVID

Unprecedented test of the resilience of our people, their families, and our health system.

Must Tackle with Sense of Urgency and a Strong Bias for Action

National Rebalance to the Pacific

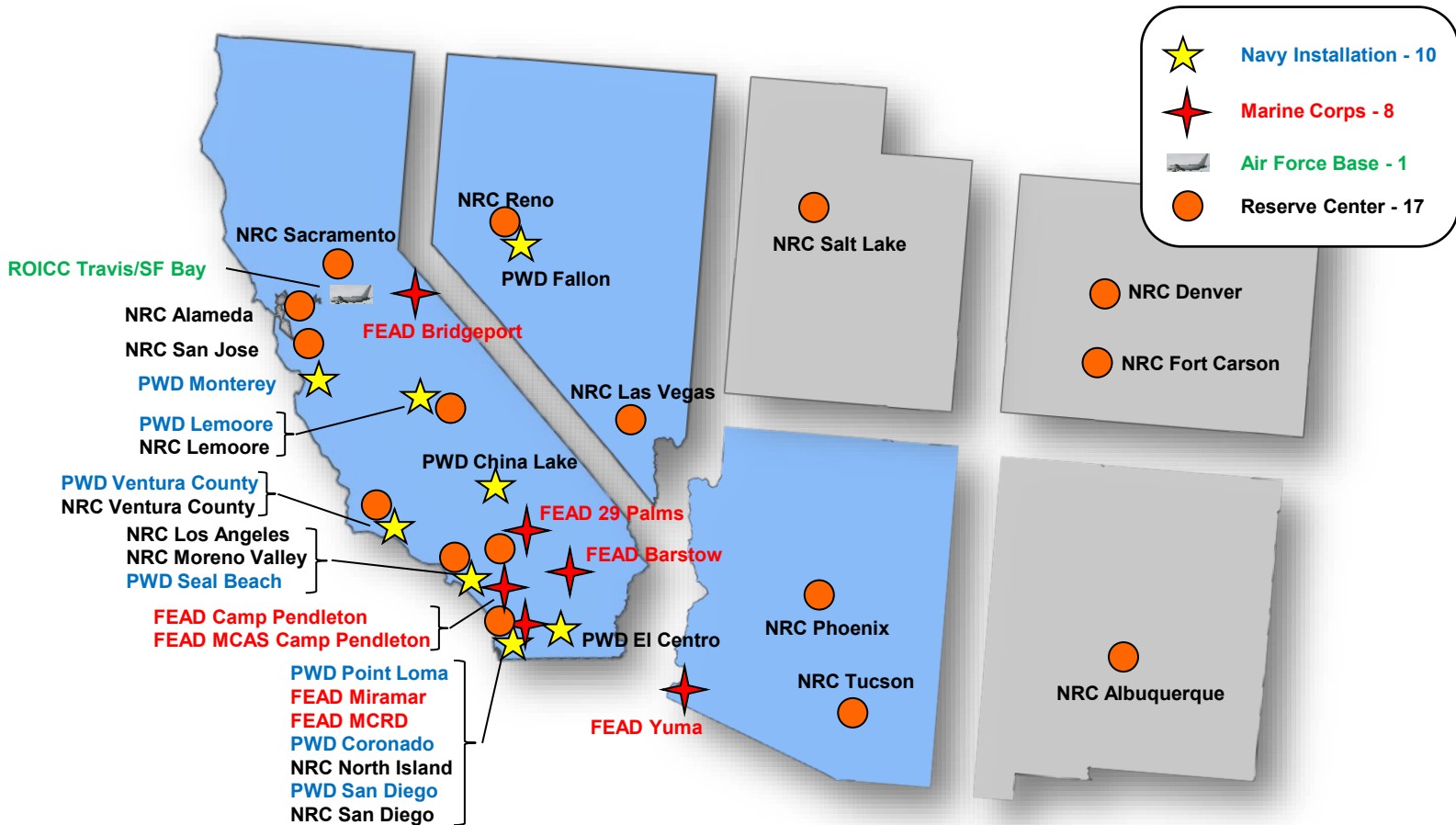
- Includes
 - 40 nations
 - 60% of the world's population
 - More than half of the world's surface
 - 30% of the world's GDP
 - 70% of the world's oil transits through the Strait of Malacca
- Top 4 trading partners
 - Canada, **China**, Mexico, Japan
- 6 largest militaries
 - China**, U.S., India, Russia, North Korea, South Korea



60% of the Fleet to the Pacific

Maintaining Maritime Dominance in Defense of our Nation

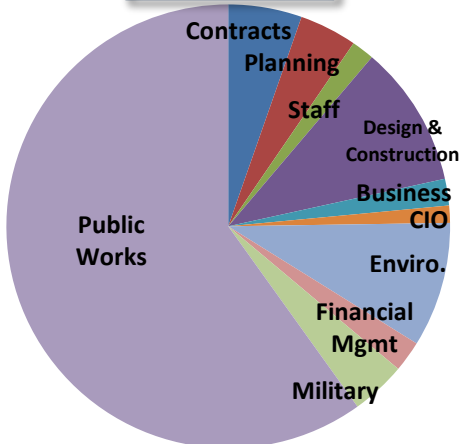
Southwest Region Area of Responsibility



Coastal | Desert | Marine Corps
19 offices assigned to three Project Management Divisions (PMDs)

NAVFAC Southwest

Staffing



3366 Civilians and 140 Military at 19 locations

MISSION

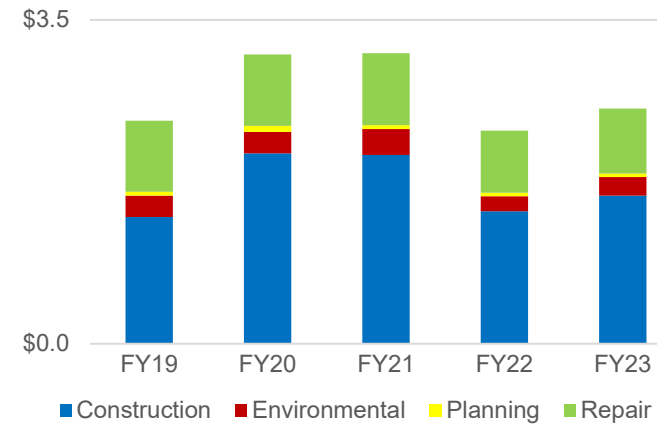
NAVFAC is the Naval Shore and Expeditionary Systems Command that:

- Plans, builds, and maintains sustainable facilities.
- Delivers environmental, utilities and other base services.

WHAT WE DO

The Southwest's naval shore construction and contracting agent delivering ~\$3 billion of annual business and facilities lifecycle sustainment. Integrated team of multi-disciplinary professionals with expertise in planning, real estate, design, construction, utility operation, energy solutions, facility services, transportation, environmental and weight handling.

SW Volume of Business (\$B)



Major Programs

- Joint Strike Fighter
- Old Town Campus Revitalization
- Unmanned Systems
- Defense Fuel Support Point San Pedro Commercial Out-Lease (COL)
- Naval Special Warfare - Coastal Campus
- Fallon Range Training Complex
- Navy Infrastructure Reduction

Core Competencies

- Facilities Planning, Operations & Sustainment
- Environmental Compliance & Restoration
- Shore Anti-Terrorism Force Protection
- Utilities and Energy Management
- Specialized Technical Services
- Design, Repair & Construction
- Real Estate

Supported Commands

- Navy Installations Command
- Navy Fleet and System Commanders
- MCI-West, TECOM & USMC Units
- Air Force
- Federal Agencies and non-DOD tenants

Major Programs: Current OPS

Long-Range Plan for Construction of Naval Vessels



Various FY20+ Increase to 355 ships

KC-46



**ROICC Travis AFB
9 MILCONS
2017-2032
\$174M**

NAVAL SPECIAL WARFARE



**Coastal Campus
2015 - 2025
29 MILCONS
\$1B**

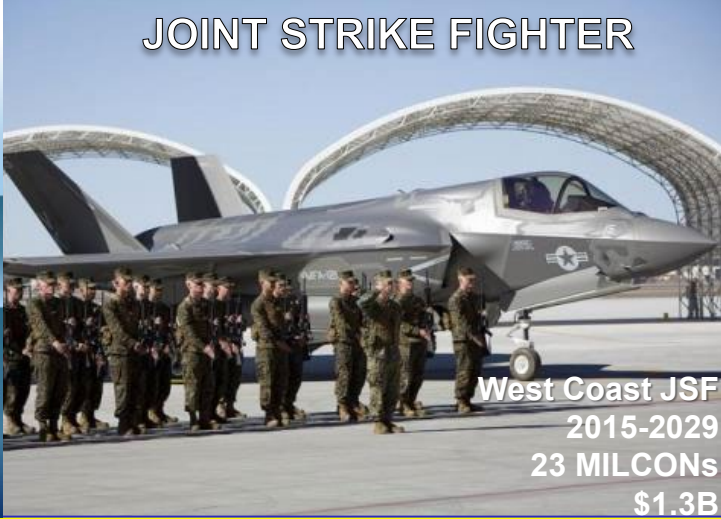
Unmanned Surface Warfare



**Naval Base Ventura County
2023+
2 MILCONS
\$250M**

Unmanned Undersea Warfare

JOINT STRIKE FIGHTER



**West Coast JSF
2015-2029
23 MILCONS
\$1.3B**

MARITIME SURVEILLANCE



**Naval Base Ventura County
2019-2024
5 MILCONS
\$250M**

Enabling a rebalance. Programmatic approach. Dynamic requirements.
 Rapid exchange of lessons learned. Acquisition strategies driven by IOC timelines.

FY22/23 Workload Distribution



Navy Installations

Project Size	NB San Diego	NB Coronado	NB Point Loma	NWS Seal Beach	NB Ventura County	NAWS China Lake	NAS Lemoore	NAS Fallon	NSA Monterey	NAF El Centro
< \$25M	✓	✓	✓	✓	✓	✓	✓	✓	✓	✓
\$25-\$100M	✓	✓	✓	✓	✓	✓	✓	✓		
\$100-\$200M				✓	✓	✓	✓			
>\$200M						✓	✓			

Marine Corps / Air Force Installations

Project Size	MCB Camp Pendleton	MCAS Camp Pendleton	MCAS Yuma	MCAS Miramar	MCAGCC 29 Palms	MCRD San Diego	MCLB Barstow	MCMWTC Bridgeport	Travis AFB
< \$25M	✓	✓	✓	✓	✓	✓	✓	✓	✓
\$25-\$100M	✓		✓	✓	✓	✓			✓
\$100-\$200M	✓				✓				
>\$200M				✓					

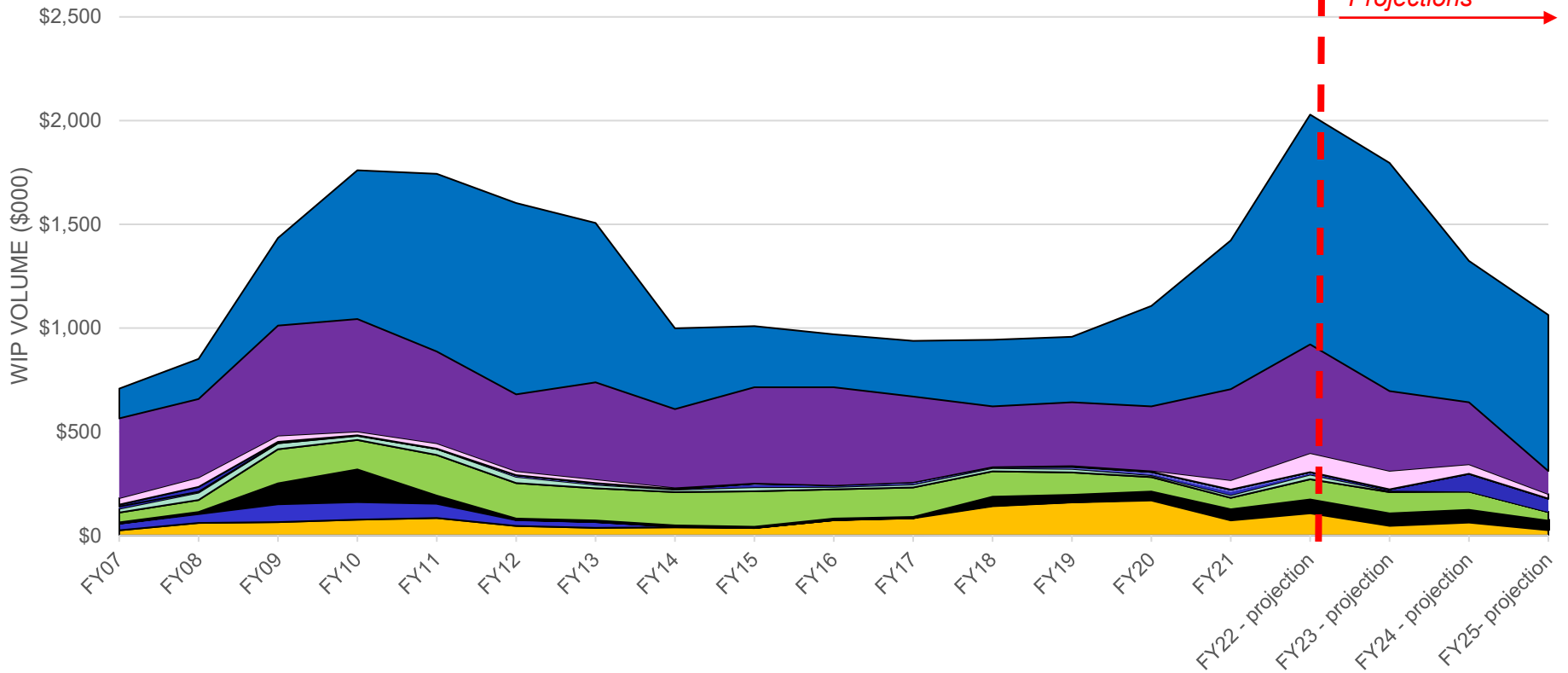
** Data contained herein is based on the best available information and is subject to change.

FY22/23 Workload >\$1.4B

NAVFAC Southwest Historical WIP



NAVFAC SW HISTORICAL WIP



M3B17	DLA-E	REAL ESTATE	POLL/HAZ	NAVY OTHER	DEFENSE (OTH)	REIM	BRAC(CON)
DIRECT CITE	ER,N	DEFENSE (MED)	RPM	FH (RPRS)	MCAF/R/NG	FSRM	MCON/MCNR

*MCON/MCNR and FSRM includes China Lake Earthquake Recovery funds

NAVFAC SW Planned

Architect/Engineering IDIQ Contracts



Title	Type	Capacity	Est. Award Date
Architect (Multi-Discipline)	UR	\$249M	Q4 FY22
Facilities Planning	SB	\$15M	Q3 FY22
Encroachment	UR	\$30M	Q3 FY22
Geotech and Surveying	8(a)	\$15M	Q4 FY22
Surveying and Mapping	UR	\$7.5M	Q4 FY22
MEP/FP	SB	\$40M	Q2 FY23
Civil	8(a)	\$15M	Q3 FY23

**** Data contained herein is based on the best available information and is subject to change**

NAVFAC SW Planned

Construction MACCs



Title	Type	Capacity	Est. Award Date
General Construction MACC	8(a)	\$395M	Q2 FY23
Heavy Horizontal	UR	\$1.0B	Q1 FY23
Dry Utilities	SB	\$495M	Q2 FY23
Secure Spaces	UR	\$249M	Q4 FY22
Demolition	UR	\$249M	Q1 FY23
Medical MACC	UR	\$1.0B	Q4 FY22

**** Data contained herein is based on the best available information and is subject to change**

FY22 MILCON - Planned



Location	P-No	Project Title	RFP Issue
NB Coronado	Q822U Q951 897*	SOF POTFF Facility SOF ATC Operations Support Facility CMV-22B Aircraft maintenance Hangar	Q3 FY22 Q1 FY22 Q2 FY23**
NBVC Pt. Mugu	591 025*	Directed Energy Weapons Test Facilities MQ-25A Aircraft Maintenance Hangar	Q1 FY22
NBVC Port Hueneme	491*	Combat Vehicle Maintenance Facility	Q2 FY25**
MCAGCC 29 Palms	1231	Waste Water Treatment Plant	Q1 FY21
NAWS China Lake	815	Solar Energy Storage System	Q3 FY22
MCB Camp Pendleton	220 1983	Combat Water Survival Training Veterinary Facility	Q2 FY22 Q4 FY22**
Travis AFB	6960 674	KC-46A Fuel Cell Hangar KC-46A Fuselage Trainer	Q2 FY22 Q2 FY22

*Denotes FY22 Enacted UPL MILCON

** Denotes a Planned Date

**** Data contained herein is based on the best available information and is subject to change**

FY23 Navy MILCON - Planned



Location	P-No	Project Title	Planned RFP Date
NB Coronado	Q855A	SOF Basic Training Command	Q4 FY22
	Q821	SOF WARCUM Operations Support Facility	Q1 FY23
	Q822U	SOF POTFF Facility	Q1 FY23
	897	CMV-22B Aircraft Maintenance Hangar	Q2 FY23
	961U	Integrated Training Facility	Q2 FY23
NB San Diego	508*	Floating Dry Dock Mooring Facility	Q3 FY23
NB Point Loma	636	Child Development Center	Q2 FY23
NBVC – Pt. Mugu	615	Ground Mounted Solar Photovoltaic System at SNI	Q1 FY23
	535U	Port Damage Repair Trainer	Q2 FY23
NAS Lemoore	351	F-35C Aircraft Maintenance Hangar & Airfield Improvements	Q2 FY23
NAS Fallon	426	F-35C Aircraft Maintenance Hangar	TBD
	442	Training Range Lang Acquisition	TBD
	445	Range Training Complex with Land Acquisition, Phase II*	TBD

**Denotes FY23 UPL MILCON*

**** Data contained herein is based on the best available information and is subject to change**

FY23 USMC MILCON - Planned



Location	P-No	Project Title	Planned RFP Date
MCB Camp Pendleton	2406U	G/ATOR Facilities 43 Area, Phase II	Q2 FY23
	1241	Warehouse Replacement	Q3 FY23
	1111	Basilone Road Realignment	Q2 FY23
MCAS Yuma	595U	Water Treatment Plant Upgrades	Q2 FY23
	538	Bachelor Enlisted Quarters	Q3 FY23
	528	Combat Training Tank Complex	Q2 FY23
MCAS Miramar	201	Aircraft Maintenance Hangar	Q1 FY23
	254	F-35C Centralized Engine Repair Facility	Q4 FY23
MCAGCC 29 Palms	480	Electrical Power Infrastructure Upgrades (ERCIP)	Q1 FY23
	481	Energy Resilience, Phases 3 and 4	Q1 FY23
	1238	Construction of Grid Stability & Resiliency 10 MW Battery Energy Storage, Various Buildings	Q2 FY23
	924	Range Simulation Training & Operations Building	Q1 FY23
MCRD San Diego	315	Recruit Mess Hall Replacement	Q3 FY23
	317U	Expand Recruit Clothing Issue Warehouse	Q1 FY23

**** Data contained herein is based on the best available information and is subject to change**

Environmental Contracts



Program	Qty of Current Contracts	Available Capacity (\$M)	FY22 Planned Procurements Capacity (\$M)	FY22 Planned Procurements (qty)	FY23 Planned Procurements Capacity (\$M)	FY23 Planned Procurements (qty)
Restoration	4	581,198	-	-	335	2
Compliance	2	110,980	-	-	100	1
Range	1	94,440	95	1	-	-
Natural Rsrcs	3	46,320	100	1	-	-
Cultural Rsrcs	2	15,908	-	-	-	-
Services	2	14,883	-	-	60	1
NEPA	1	2,749	-	-	-	-
Total	15	866,478	195	2	495	4

**note: MACs are counted as a single contract in above table*



Data is based on the best available information and is subject to change.

Planned Environmental Contracts



Title	A-E?	Scope	MAC/S	Pricing	Business Size	Duration (yrs)	Capacity (\$M)	RFP*	Pln Awd
Habitat Enhancement and Pest Control	-	Natural Resources	MAC	fixed (ELIN)	small business	8	100	FY22 Qtr 2	FY22 Qtr 4
Range Sustainment	-	Range Sustainment	MAC	fixed	small business	7	95	FY22 Qtr 3	FY22 Qtr 4
Lab	-	Services	single	fixed	unrestricted	7	60	FY22 Qtr 4	FY23 Qtr 1
RADMAC	-	Restoration	MAC	fixed	tbd	5	240	FY22 Qtr 4	FY23 Qtr 2
CERCLA/RCRA	A-E	Restoration	single	fixed	small business	5	95	FY22 Qtr 4	FY23 Qtr 2
EV Compliance and Technical Services	A-E	Compliance	single	fixed	small business	7	100	FY22 Qtr 3	FY23 Qtr 2
CLEAN V	A-E	Restoration	single	cost	unrestricted	7	240	FY22 Qtr 4	FY24 Qtr 1
NEPA	A-E	NEPA	single	fixed	unrestricted	7	75	FY23 Qtr 1	FY24 Qtr 3
Total Capacity:							1,005		

*note: for A-E procurements, the RFP date shown represents the synopsis release date - request for SF330

Data is based on the best available information and is subject to change.

Initiatives



- **Public Works Optimization: Shift in execution of projects <\$5M to the installations**
 - Increased scope (quantity and competitiveness) of contracts available at field offices with assistance from regional team
- **Early Contractor Involvement**
 - Bring KTR in at design start – P-025, MQ-25 Hangar at NBVC, awarded 27 Jan 2022, currently conducting 35% design review. P-315, Mess Hall at MCRD, currently in Phase 3 Peer Review, will award NLT 15 Jul 2022
- **OICC China Lake**
 - Responsible for \$2.4B Earthquake Recovery MILCONs & \$340M in O&M funding
 - Post-award focused
- **NRDE Bold Move Initiative**
 - CNIC and NAVFAC statutory and policy delegations ('red-lines') reduced requests to "maximum Section 233" implementation. NSWC Corona and NAWCWD at China Lake and other Navy SYSCOMs may increase construction contracting capabilities

Construction Contract Modifications



• NAVFAC SW Improvements

• Lean modification process for \leq \$250K

- Scope developed jointly in field
- No IGE – mark-up contractors proposal
- CMs to negotiate as Contracting Officer's Authorized Representative (COAR) & KO signs as approving official (with funding in hand)

• Modification Processing Time – establishing controls & new reporting tools to

- Monitor modification lifecycle & outline expectations
- Mandate use of decision tree if no resolution and use of partnering

• More designers on-site: Navy and A/E (PCAS)

• Proposed Contractor Improvements

• Time Impact Analysis (TIA) **MUST** be submitted in a timely manner

- Lack of timely and complete TIA submissions has caused contract modifications to be negotiated without time.
- In budget constrained projects, this can cause a contract to be put on hold to allow for reprogramming or necessitate scope reductions late in contract duration.

• If requesting other than NAVFAC standard construction overheads, submit proposed overheads and substantiation for evaluation and negotiation **BEFORE** first change

Partnering



- **NAVFAC updated its Project Partnering Instruction to improve use of partnering and performance on construction contracts. The updated instruction:**
 - Incorporates feedback and best practices from industry
 - Established processes for improving communication
 - Improves collaboration to ensure success throughout the life of a project
 - Places responsibility on the PM, pre-award, and the FEAD Director, post-award
- **NAVFAC PAC implementing Tier III partnering**
- **Question: Feedback from Industry – Areas to improve, what is working well? What is not working well? At what sites?**

MINDSET - to improve communication, trust, and problem solving

COMMITMENT - to focus on the shared project goals

PROCESS - to establish the right mindset and commitment for project success

Field Acquisition Strike (FAS) Team



- **Our goal is to improve Performance to Plan (P2P) to meet our Supported Command's mission need dates every time**
- **The purpose of the dedicated FAS Team is to assist FEADs in:**
 - Contract modifications that impact the critical path by 90 days or more
 - Contract modifications and Request for Equitable Adjustments (REAs) that are greater than one year old
 - Complex Time Impact Analysis (TIAs) that add 90 days or more to the Contract Completion Date (CCD)
 - Contract modifications, REAs or TIAs on contracts that have passed the CCD
 - Close out aged contracts
- **Team composition: a dedicated CM, ET, acquisition member(s), and support from Core**
- **Currently working projects issues at Camp Pendleton, Coronado and will be taking on other efforts to reduce backlog**

eCMS



- **Owners Module that collaborates between KTRs and NAVFAC for Submittals, RFIs, Daily Reports... thru eCMS.**

 - KTR can still use their own system to manage their internal efforts

- **Applicability:**

 - All MILCON Projects awarded after 30 June 2020

 - All Projects > \$1,000,000 after 1 October 2020

 - All >SAP (>\$250k) min as Electronic Share Drive

 - All Projects < \$250K encouraged, but optional

- **Accounts and training by project – COR to request**

- **Acquisition same process – not in eCMS**

- **No PII nor Cost Estimates in eCMS**

- **Contract Specs – Mod required if missing**

 - DBB – Spec Section 01 31 23.13 20

 - DB – RFP Section 01 31 19.05 20

eCMS Requirement As Part Of RFP – GOAL To Maximize Use!

eCMS Status



- Use: NAVFAC SW/CL 2000+ GOV/KTR users 197+ projects
- Clustering done – 7 more servers
- FireFox Private mode best; If issues, clear cache, switch browser
- Recent deep-dive on NITC hosting performance done
 - Storage, RAM, speed issues identified
 - Issues reduced functionality and created instability
 - NITC working server Speed/RAM/Storage/OneNet issues
- Cloud Migration Soon – Faster performance – OneNet issues
- Multi-Factor Coming
- Increased Functionality 15-2 coming - Aug

- Contact Tom Clark for accounts, training, & issues
 - Training: on-site, project team, role specific, dashboards
 - Tom.P.Clark.civ@us.navy.mil or 858-243-0780

Updated Version – Leadership Boards

eCMS & KPIs for Post-Award Metrics



- **RFI and Submittals – in eCMS**
 - Log; Response time
 - History Tab
 - When submitted and Responded
 - All actions recorded in background
- **Checklist – in eCMS (Yes or No checklist)**
 - Safety
 - 3 Phases of Control (Prep/Initial Phase)
- **Contract Mod's and Proposed Changes – in eContracts (Tableau reports)**
- **Non-Compliance Notices – in eCMS**
- **Future Partnering team health surveys**
- **Question: Feedback from Industry – what is and isn't working**

Must Log In eCMS Every 45 Days To Maintain Account

Cybersecurity Implementation



- **UFC 4-010-06 (Cybersecurity of Facilities Related Control Systems)**
- **UFGS 25 05 11, Cybersecurity for Facility-related Control Systems**
 - Tri-service directive for all projects in FY17 and beyond
 - Supersedes UFGS 25 50 00.00 20
 - Applies to Confidentiality-Integrity-Availability (C-I-A) impact levels designated as “moderate-moderate-moderate”
 - C-I-A impact levels above “moderate-moderate-moderate” requires supplemental guidance by NAVFAC Command Information Office (CIO) for Navy and Marine Corps.

Process may Evolve as Lessons are Learned

Economic Price Adjustments



- **FAR 36.207(c): Fixed-price contracts with economic price adjustment (EPA) may be used when omission of an adjustment would result in unwarranted contingencies in proposed prices**
- Contractors can request use of an EPA clause in response to the draft RFP via RFI and/or during 1v1s
- **Request should be as specific as possible:**
 - What materials (i.e. steel, lumber, electrical wire, etc.) are driving the request
 - What index should be used to measure the inflation rate and price the adjustment?
 - Clause has a 10% limit on aggregate increases, but can be increased with justification. If 10% limit should be increased, help us substantiate why
- Adjustment goes both ways (up and down). The clause has no limit on the downward adjustment

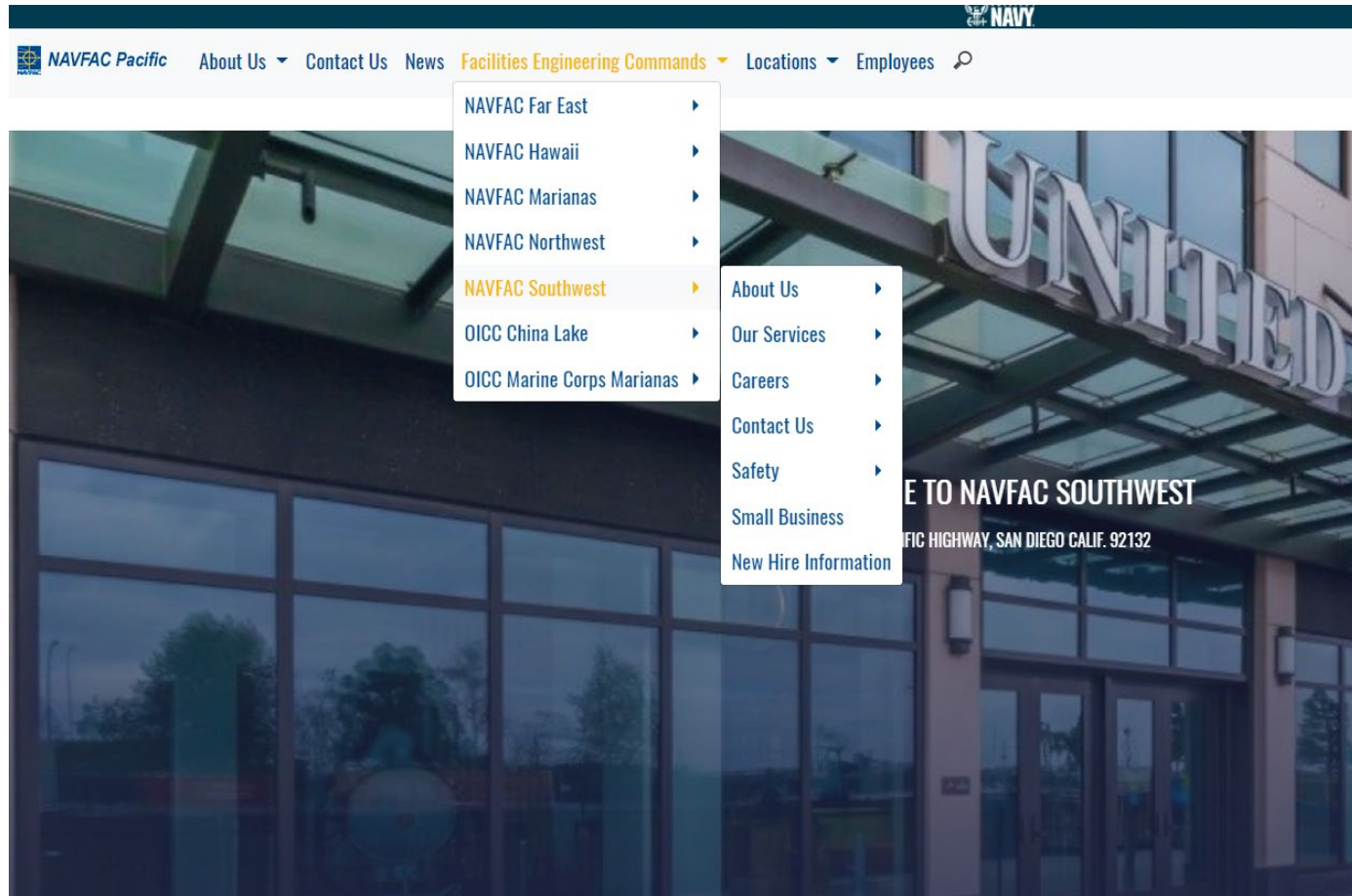
Future Requirement

Future Workload



Search
“NAVFAC
Southwest”

NAVFAC Southwest
Workload Projection
at
NAVFAC
Southwest
Homepage
Left of USEFUL
LINKS listings



<https://pacific.navfac.navy.mil/Facilities-Engineering-Commands/NAVFAC-Southwest/>

Full Transparency on Projects & Acquisition Tools

Requesting Visit to NAVFAC SW



- NAVFAC SW has specific protocol and a process for contractors to follow when submitting visit requests.
- Protocol was developed to:
 - 1) Provide industry representatives with a fair and equal opportunity to contact the command
 - 2) Ensure minimal disruption to the Navy mission.
- The Contractor Visit Protocol can be found in the NAVFAC SW Public Web Site at the following link:
<https://pacific.navfac.navy.mil/Facilities-Engineering-Commands/NAVFAC-Southwest/Contact-Us/Come-Visit-Us/>
- To request a contractor call/visit, personal visit, or social call, send an e-mail to the command's Contractor Visit Coordinator at:
NAVFAC_SW_Contractor_Visit_Coordinator@navy.mil

Questions



“It follows then as certain as that night succeeds the day, that without a decisive naval force we can do nothing definitive, and with it, everything honorable and glorious.”

— George Washington

BACKUP

Project Management



- **NAVFAC is reforming project management processes and competencies to improve project delivery and execution.**

- Released the Project Management Community Management Framework and Certification Guidelines **in June 2020**. This framework establishes five key PM competencies, a focused project management training curriculum, and an internal certification program. The focus moving forward will be rolling out this training curriculum and ensuring that our project managers are trained and certified in accordance with this framework.
- Design & Construction (DC) PM Manual has been updated in January 2022 to align with the Project Management Institute's Guide.
- NAVFAC is investing more resources in project management to ensure PMs are engaged throughout the entire project lifecycle (planning-design-construction-maintenance).

Cradle to Grave

Future eCMS Improvements



- **Dashboards Roll-Out after Data Testing**
- **Version 15-2 (Includes all previous versions)**
 - Printing RFIs, Submittal Transmittals in NF Format
 - Submittal Cycles, Import submittals from log
 - Checklist Improvements
 - Reviewer Table email notifications
 - OCR Plans
 - RFI and SUB Returned/Closed Dates
 - Improved Document Management
 - Training and handbook updates – (TWMS)
- **Future Improvements**
 - Tablet computer (EOY?)
 - Construction Schedule (Integrate w/ P6)
- **Other Product and Service**
 - Currently working with FSC

Cybersecurity Maturity Model Certification (CMMC)



- **DFARS Clause 252.204-7021, Cyber Maturity Model Certification Requirements, should not be in current RFPs or contracts, as use before 1 Oct 2025 required OUSD (A&S) approval**
- **Roll out of the CMMC requirements has been suspended until further notice**
- Cybersecurity requirements of other clauses (DFARS 252.204-7012, 252.204-7019, and 252.204-7020) are still in effect
- DoD intends to implement "CMMC 2.0" with updated requirements as outlined at this website: <https://www.acq.osd.mil/cmmc/index.html>
- The changes to CMMC 2.0 will be implemented through the rulemaking process and companies will be required to comply once the forthcoming rules go into effect. Until then, you should continue to enhance your cybersecurity posture

Future Requirement