

kugan&associates, Inc.

Training for Today and Tomorrow

Online Training



Kugan & Associates, Inc. is dedicated to providing effective training solutions and has years of industry experience in the areas of Project Management and Project Scheduling. We are leaders in innovation for effective project management education.



www.kugan.com



info@kugan.com



858-212-2941

kugan&associates, Inc.
Training for Today and Tomorrow

Tetra Tech, Inc. - Industry Rankings: #1 Market Leading Positions



19 years
in a row



13 years
in a row



9 years
in a row



6 years
in a row

#4 in Top 500 Global Design Firms

Environmental Restoration



A collage of images related to environmental restoration. The background shows a large drilling rig. Overlaid on this are four circular images: a worker in a white protective suit and mask, a person in a red vest working in a forest, a person in a white hard hat and orange vest working on a construction site, and a person in a yellow vest working on a construction site.

Natural Resources & NEPA



A collage of images related to natural resources and NEPA. The background shows a desert landscape with a coyote. Overlaid on this are four circular images: a person holding a large tortoise, a coyote, a wind turbine, and a person working with a large rock.

Asset Management & Master Planning



A collage of images related to asset management and master planning. The background shows a man in a red shirt standing by a canal. Overlaid on this are four circular images: a person in a red shirt working in a facility, a group of people in a meeting, a person in a white hard hat and yellow vest working on a construction site, and a person holding a tablet displaying the word 'BUILDER'.

Engineering & Design



A collage of images related to engineering and design. The background shows a man in a red shirt standing by a canal. Overlaid on this are four circular images: a person in a red shirt working in a facility, a construction site with a crane, a person in a white hard hat and orange vest working on a construction site, and a large dam structure.

2022 Sustainability Report Card Highlights

1 Billion People Challenge Baseline Metrics

411 million people's lives improved

328,000 megaliters (ML)/year of water treated, saved, or reused

16,800 megawatts (MW)/year renewable energy identified, planned, or generated

178 million hectares (ha)/year of land and water protected, managed, or restored

20.6 million CO₂e metric tons (MT)/year avoided or captured

Tetra Tech by the numbers

21,000 associates

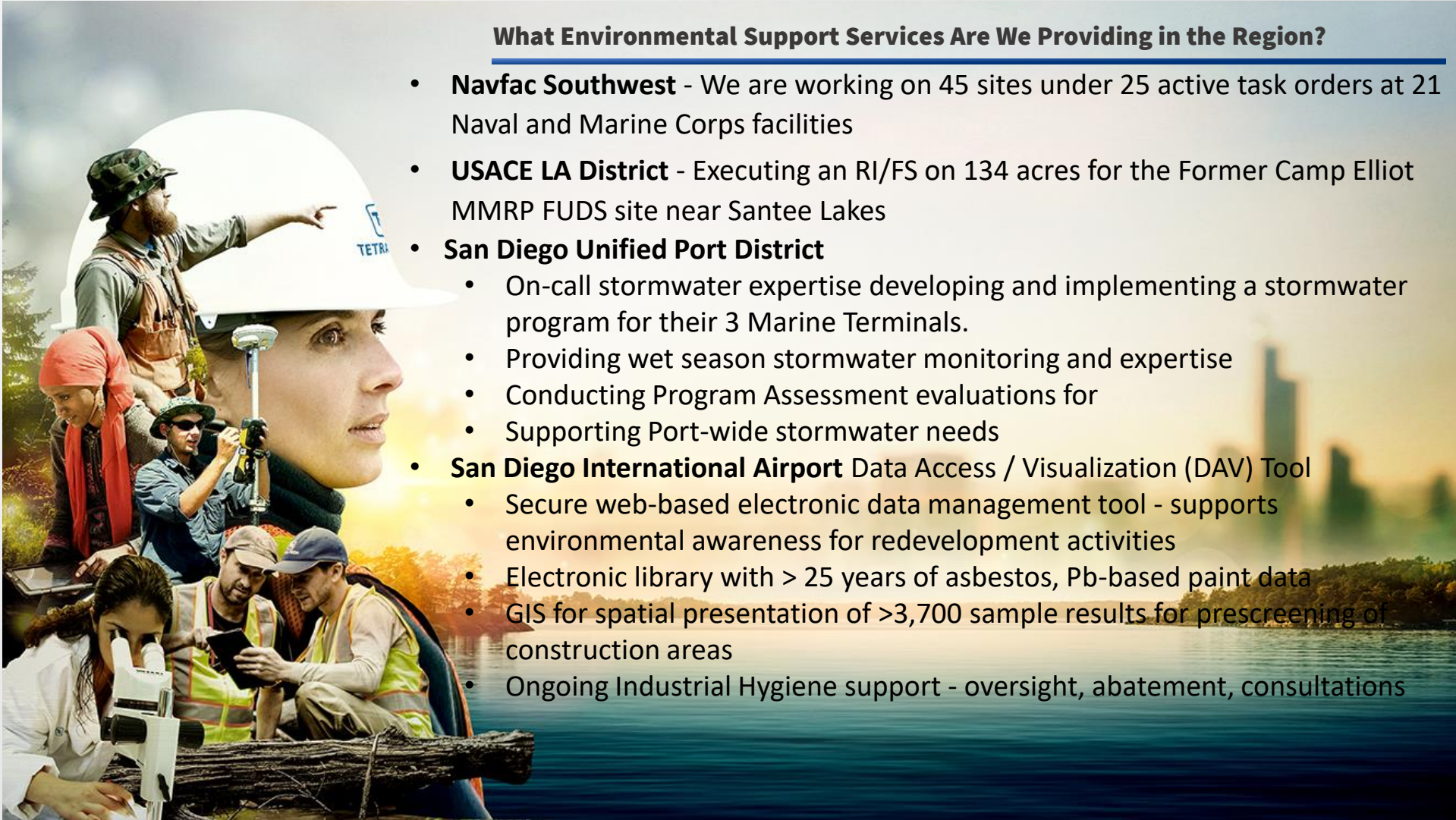
\$3.2 billion revenue

100+ countries

70,000 projects annually

450 offices worldwide





What Environmental Support Services Are We Providing in the Region?

- **Navfac Southwest** - We are working on 45 sites under 25 active task orders at 21 Naval and Marine Corps facilities
- **USACE LA District** - Executing an RI/FS on 134 acres for the Former Camp Elliot MMRP FUDS site near Santee Lakes
- **San Diego Unified Port District**
 - On-call stormwater expertise developing and implementing a stormwater program for their 3 Marine Terminals.
 - Providing wet season stormwater monitoring and expertise
 - Conducting Program Assessment evaluations for
 - Supporting Port-wide stormwater needs
- **San Diego International Airport Data Access / Visualization (DAV) Tool**
 - Secure web-based electronic data management tool - supports environmental awareness for redevelopment activities
 - Electronic library with > 25 years of asbestos, Pb-based paint data
 - GIS for spatial presentation of >3,700 sample results for prescreening of construction areas
 - Ongoing Industrial Hygiene support - oversight, abatement, consultations



**NEW
T1**

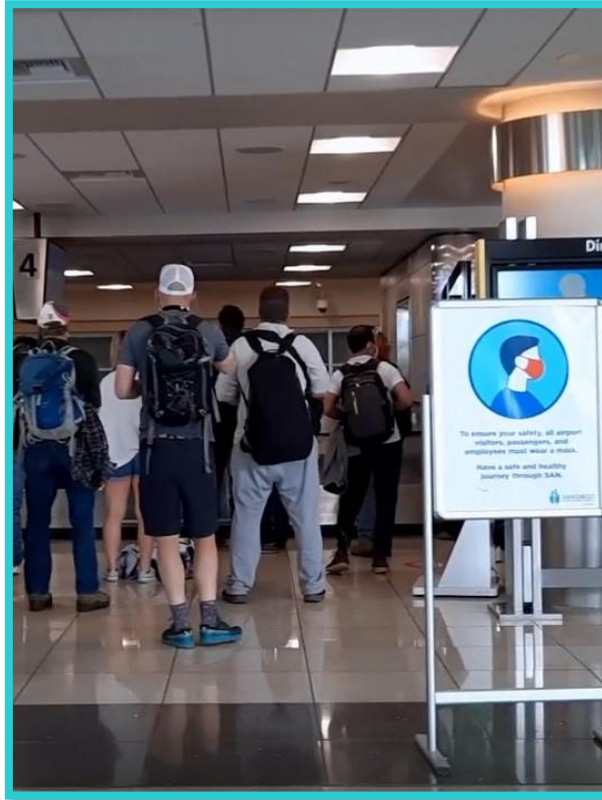
Wheels Up

**Presented by: Bob Bolton,
Director, Airport Design &
Construction**

Replacing Terminal 1

NEW
T1

Terminal 1 vs. Terminal 2







Planning for the Future

- SAN's single runway determines capacity.
- The number of air passenger will return to pre-pandemic numbers and grow.
- FAA and the marketplace dictate how many people fly.
- 39 million estimated passengers in 2035.

New T1 Overall Project Scope

NEW
T1



-  Terminal & Roadways
-  Airside Improvements
-  Administration Building
-  Future Transit Station

Features



- More than 1 million square feet of terminal space
- Outdoor patio area overlooking San Diego Bay
- Children's play area
- EV charging infrastructure
- Stormwater capture and reuse system
- Transit access
- Parking structure
- 30-gate terminal



On-Airport Access Roadway



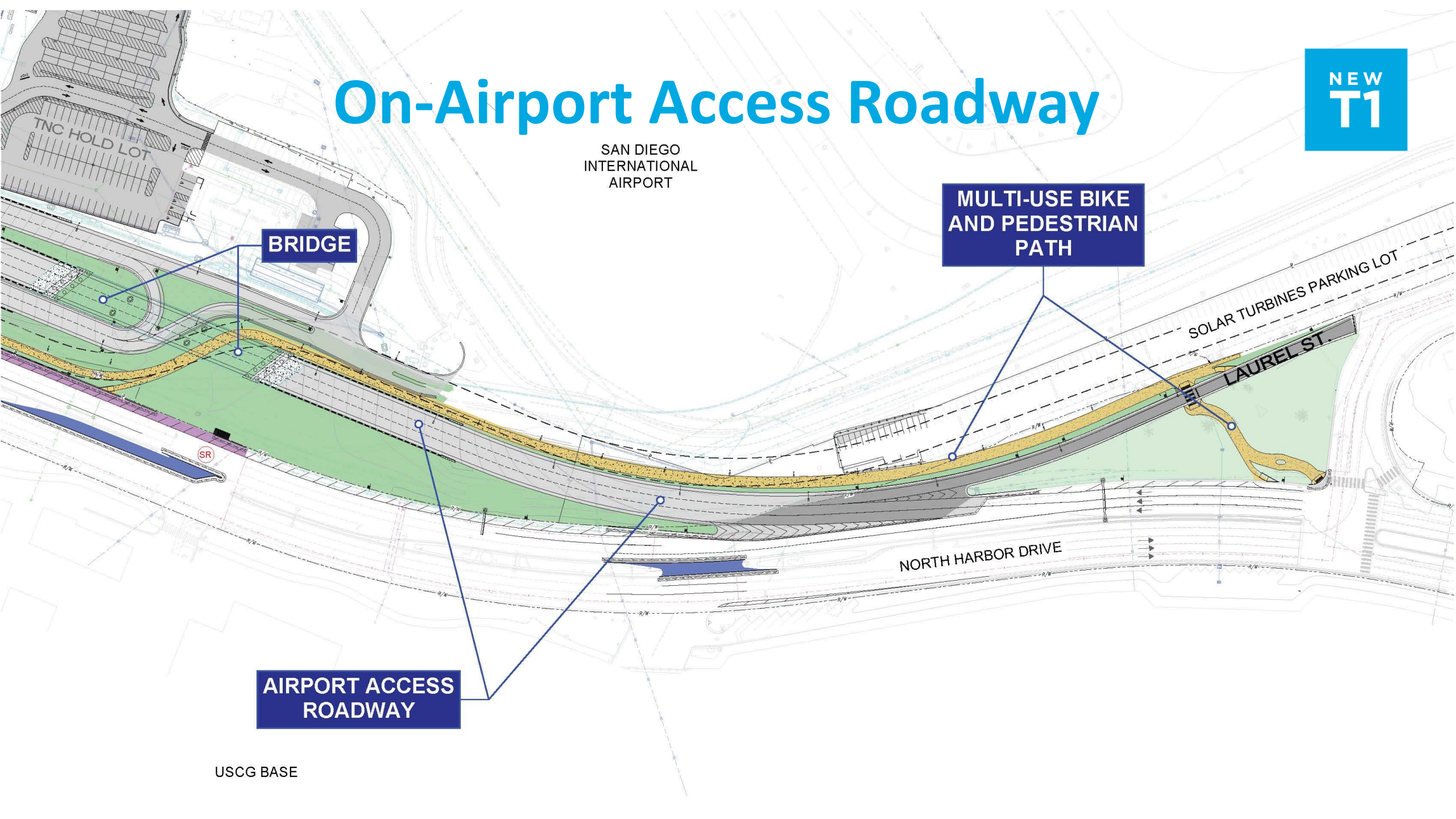
SAN DIEGO
INTERNATIONAL
AIRPORT

BRIDGE

MULTI-USE BIKE
AND PEDESTRIAN
PATH

AIRPORT ACCESS
ROADWAY

USCG BASE



Mobility & Access

- San Diego Flyer
 - Complimentary service
 - Operates seven days a week
 - Pickup/drop offs every 20-30 minutes
 - All electric fleet
 - Powered by 100 percent sustainable energy
 - Last mile connection between transit and the airport



View from 10,000 Feet

NEW
T1

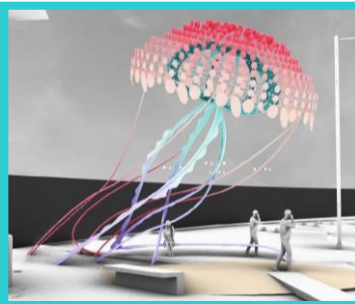


Public Art Concepts

Amy Ellingson



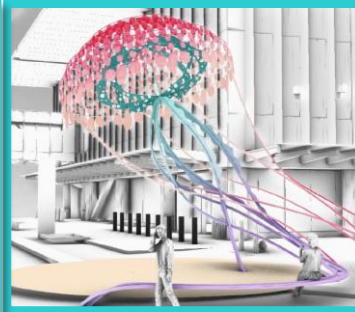
Nova Jiang



Walter Hood



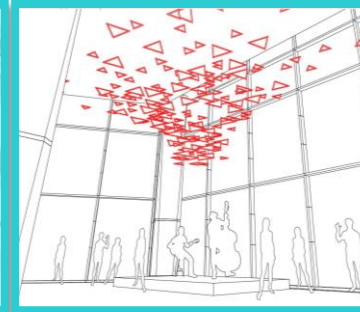
Donald Lipski



Matthew Mazzota



Erwin Redl



New T1 Economic Impact

NEW
T1

Critical link to San Diego's top economic sectors:

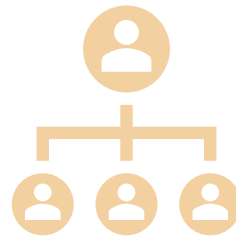
- International Trade
 - Manufacturing
 - Military
 - Tourism



\$12 billion in economic impact to San Diego



15,000-20,000 jobs



25% to small businesses enterprises



80% to local businesses



3% to veteran-owned small businesses

Milestones

NEW
T1

November 1, 2021

- New T1 construction began.

Late 2023

- Earliest opening date for the new Administration Building.

Late 2024

- New T1 parking structure open.

Late 2025

- Earliest opening date for Phase 1A.

Late 2027

- Earliest opening date for Phase 1B.

Mid-2028

- Earliest completion date for Airside Improvements construction.

Recent Construction Impacts

NEW
T1

Airline Gates:

- Closure of gates 1, 1A, 2, 3, and 4 in Terminal 1
- Allegiant Air has moved to Terminal 2 East and JetBlue Airways has move to Terminal 2 West

Parking:

- Closure of Terminal 1 parking lot
- Cell Phone Lot relocation to T2 West parking lot

Re-routes/detours

- Crosswalk and stoplight installed in front of Terminal 1 due to demolition of pedestrian bridge

Flying into/out of SAN? Plan Ahead!

NEW
T1

Get here early

- Construction will impact your journey.
- Plan to arrive at least two hours before your flight.

Use public transit or other modes of transportation

- Try the Trolley, 992 MTS bus, Coaster, and/or the San Diego Flyer shuttle.
- The San Diego Flyer is a convenient last mile connection between the Old Town Transit Center and the airport.

Make parking reservations

- If you plan to park at the airport, make parking reservations in advance.
- Parking reservations are for Terminal 2 Parking Plaza or valet.
- If flying from Terminal 1, use the Terminal Loop Shuttle which will bring you to/from Terminal 2 to/from Terminal 1.

Airlines by Terminals

Terminal 1

- Frontier Airlines
- Southwest Airlines
- Spirit Airlines
- Sun Country Airlines

Terminal 2 East

- Alaska Airlines
- Allegiant Air
- American Airlines

Terminal 2 West

- Air Canada
- British Airways
- Delta Air Lines
- Hawaiian Airlines
- Japan Airlines
- JetBlue Airways
- Lufthansa
- Swoop
- United Airlines
- Westjet Airlines

Stay Connected



Email

Go in the Know email newsletter (opt in)
New T1 Navigator (opt in)
NewT1Info@san.org

Social media

Twitter @SanDiegoAirport
Facebook /SanDiegoAirport
Instagram @SanDiegoAirport

Website

NewT1.com
San.org

Mobile

Opt-in text messaging Text UPDATES to 36017



Thank You!