

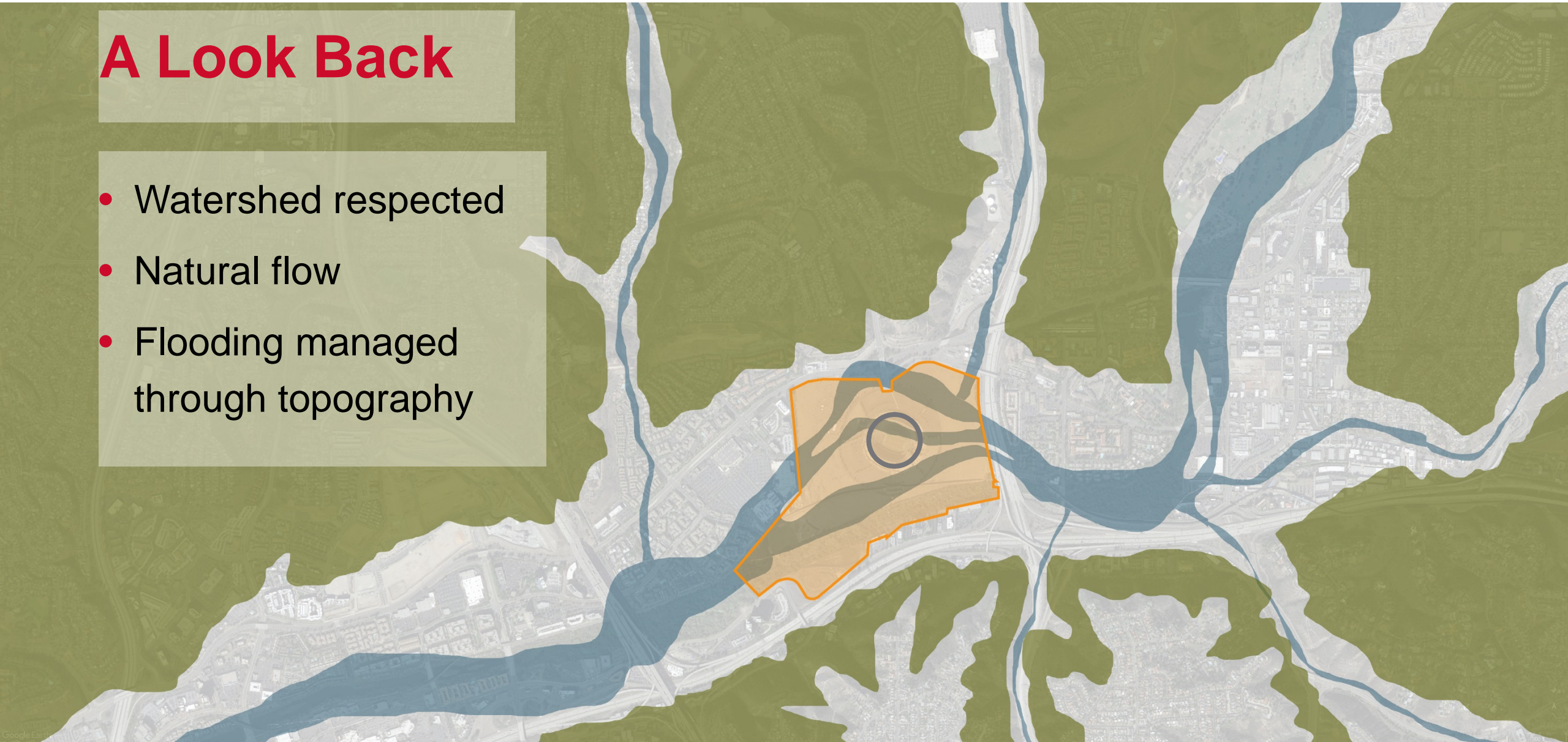
SDSU Mission Valley Campus

Society of American Military Engineers – December 11, 2019



A Look Back

- Watershed respected
- Natural flow
- Flooding managed through topography



A Look Back

1965

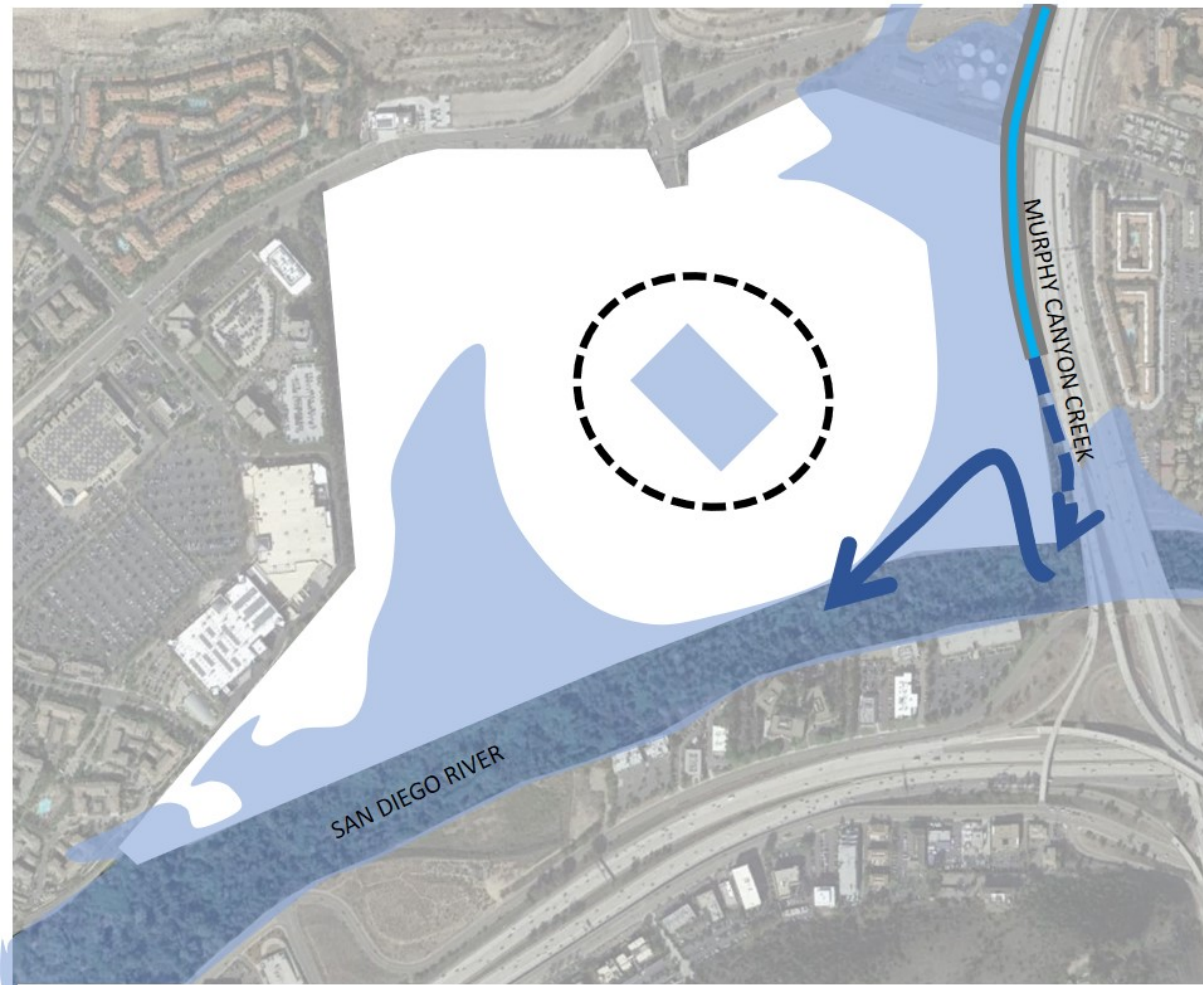
- Cut and fill source
- Altered topography



The Result:

- Hydrology Altered
- River Asset Ignored

Hydrology Concept

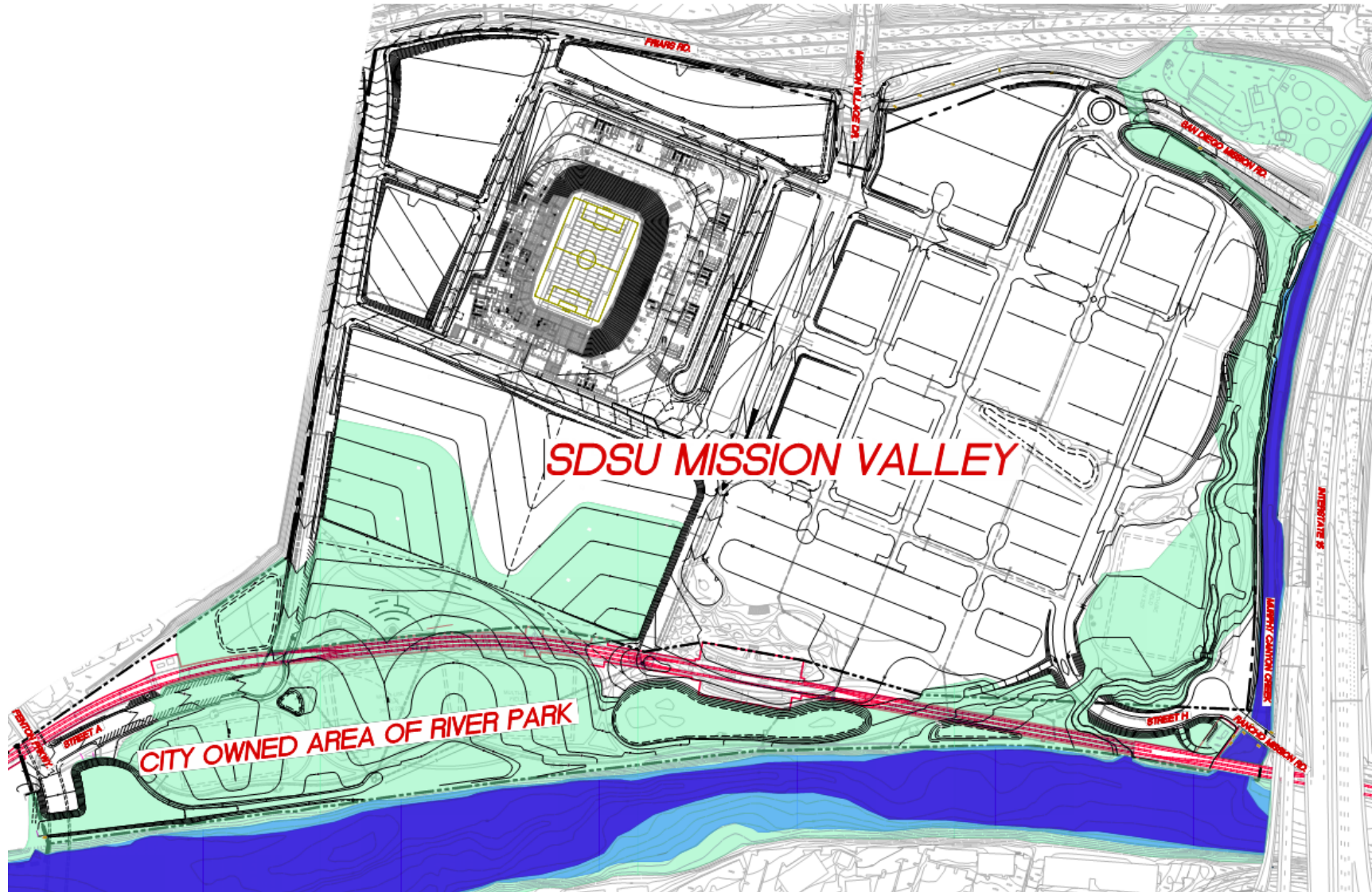


CURRENT 100 YEAR FLOOD CONDITION



PROPOSED 100 YEAR FLOOD CONDITION

Raise Development Area Above 100 YR Flood



LEGEND

- DRAFT 100-YEAR EVENT INUNDATION
- DRAFT 10-YEAR EVENT INUNDATION
- DRAFT 5-YEAR EVENT INUNDATION



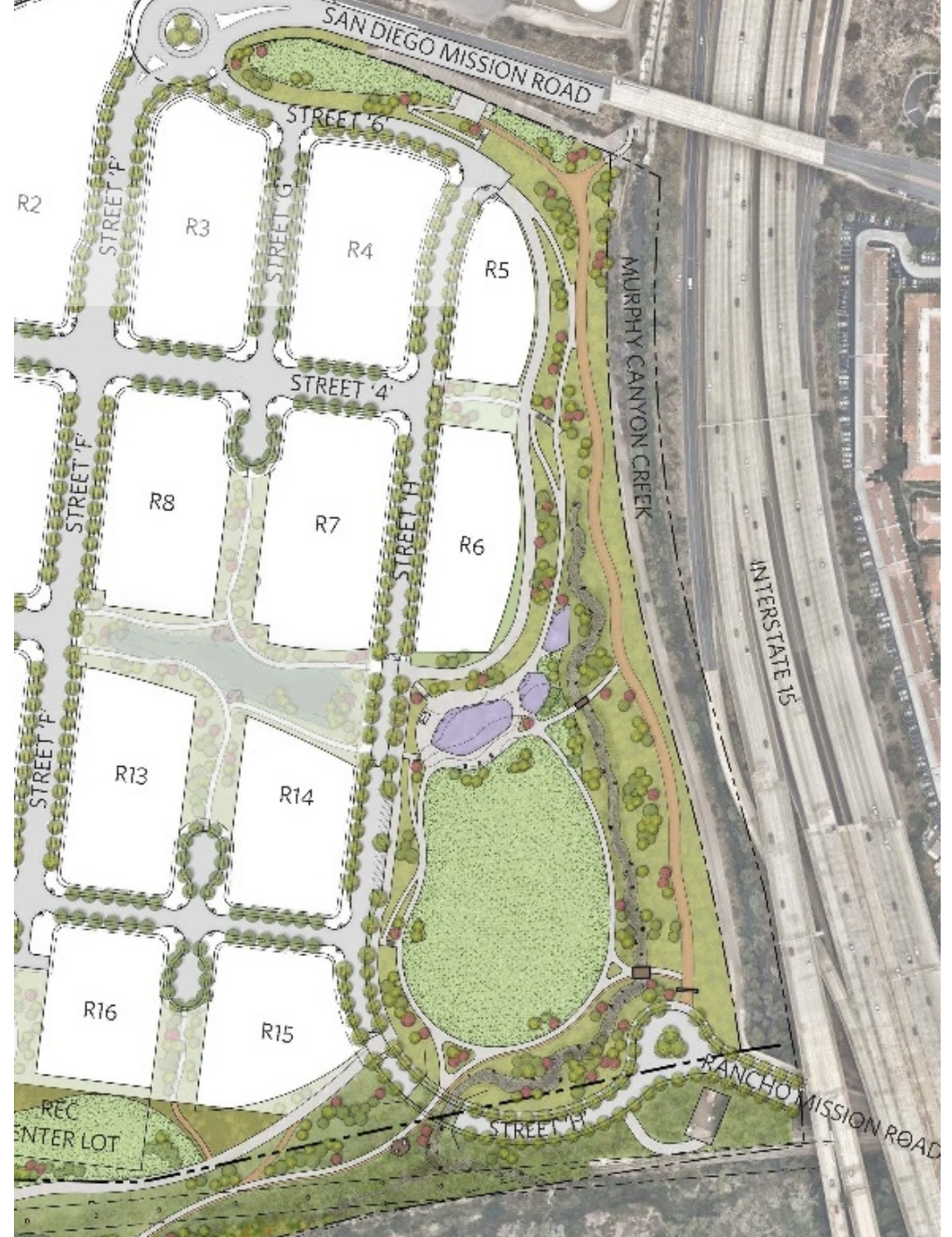
SDSU Mission Valley Campus After

- 15,000 Additional FTE
- 1.6 M SF Research/Innovation
 - 5,000 Parking Spaces
- 80+ Acres Parks & Open Space
 - 4 Miles Hike/Bike Trails
- 4,600 Units Housing
 - Affordable on Site
- 95,000 SF Retail
- 400 Hotel Rooms
 - 40,000 SF Conference
- 35,000 Capacity Stadium
 - 1,114 Game Day Parking



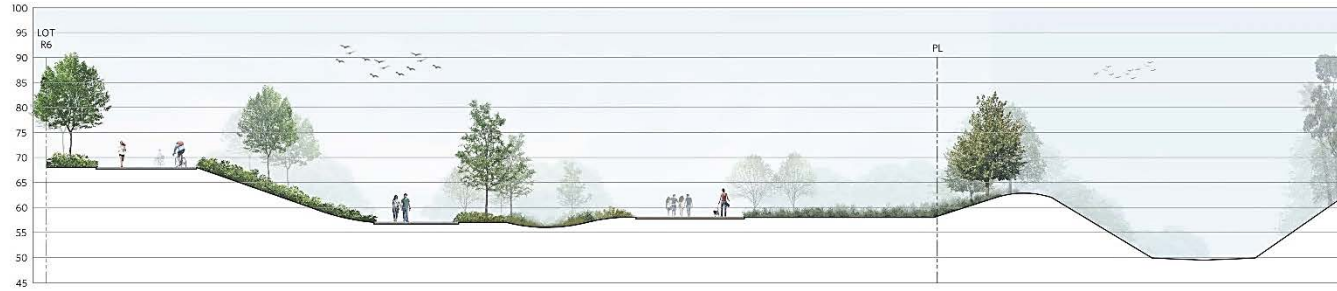
River Park

- Active and Passive recreation
- Native Plantings
- Habitat
- Hike and Bike trails
- Event and gatherings spaces
- Educational & interpretive opportunities

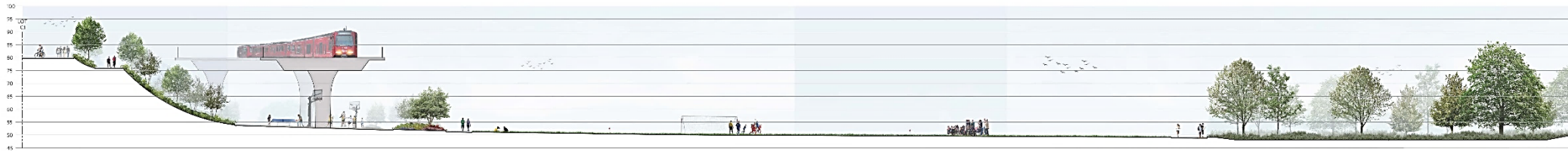
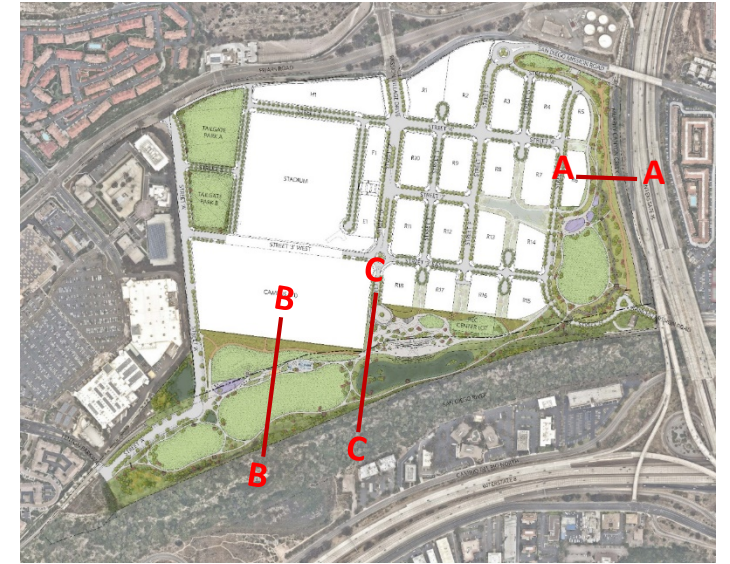




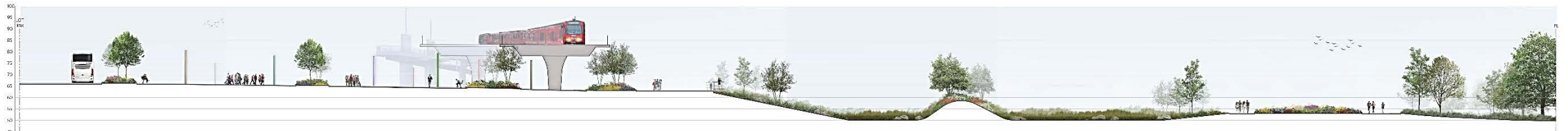




Section A-A



Section B-B



Section C-C

River Park - Before





River Park - Before









Sustainable Features

- Transit oriented development
- Active transportation
- Water savings
- 100% of water treated on site vs 0%
- Divert 80% of construction debris
- LEED Silver or better
- 80/135 acres of open space reduces heat island, provides habitat and water storage and treatment.



Community Engagement

- 150+ Public Meetings/
Presentations (ongoing)
- Three scoping meetings
- Two DEIR public meetings
- 60-day comment period for DEIR
- River Park Advisory Group
- Community Advisory Group
- Community Park Workshops



Key Dates

- Draft EIR public review
August 5 – October 3
- Final EIR early January
- CSU Board of Trustees Jan. 2020
- Property transfer March 2020
- Construction begins April/May 2020
- Stadium complete August 2022
- 15 year buildout



