

Western Area Power Administration

SAME Phoenix Post Government-Industry
Engagement Luncheon

Byron D. McCollum
22-Aug-23



What is WAPA?

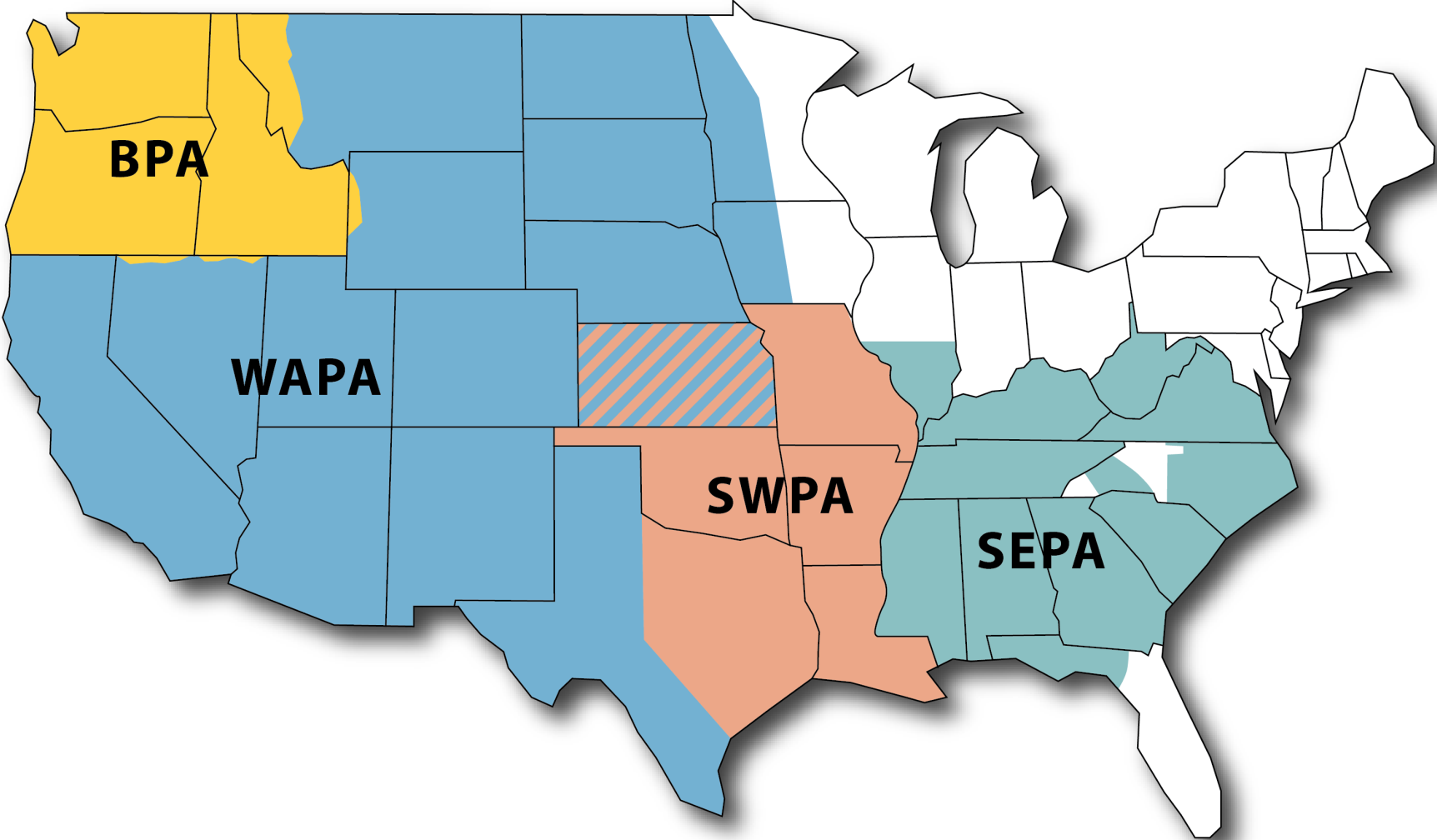


WAPA is part of DOE

- One of four PMAs under DOE
- Wholesale electricity supplier
- Around 700 customers
- Customers, in turn, serve 40 million Americans in the West

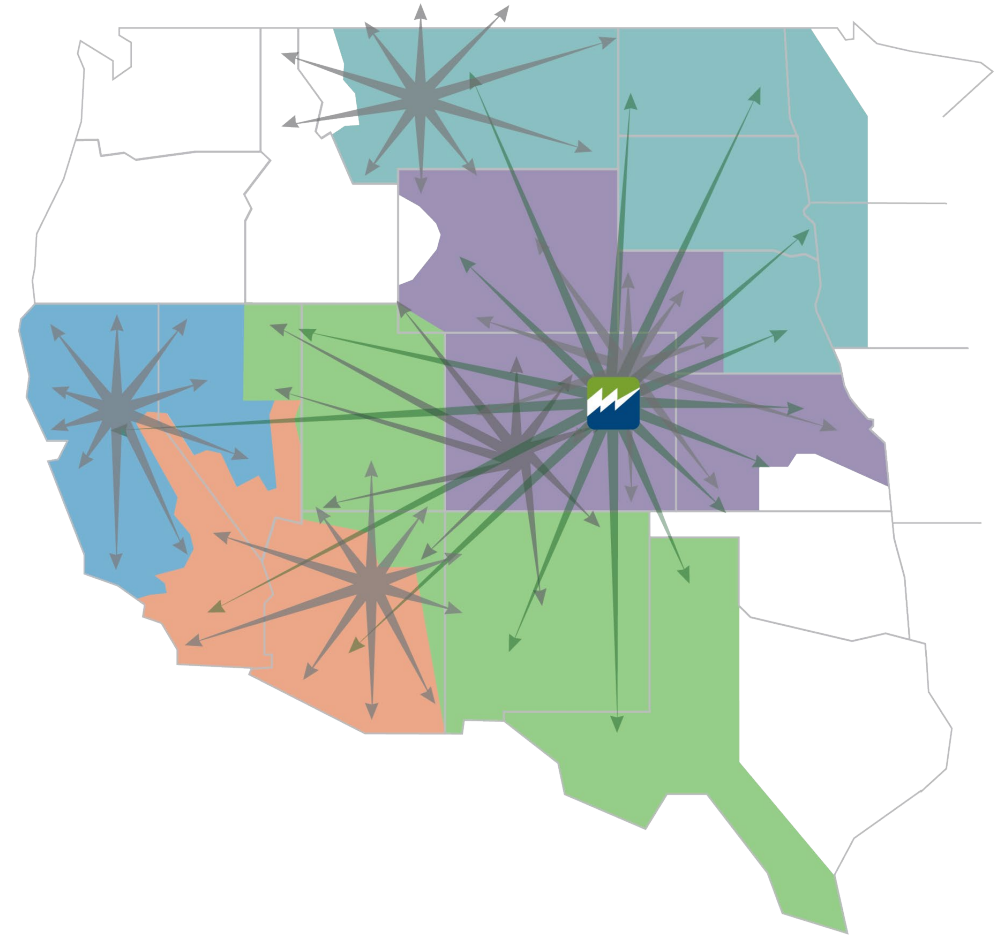


Power Marketing Administration



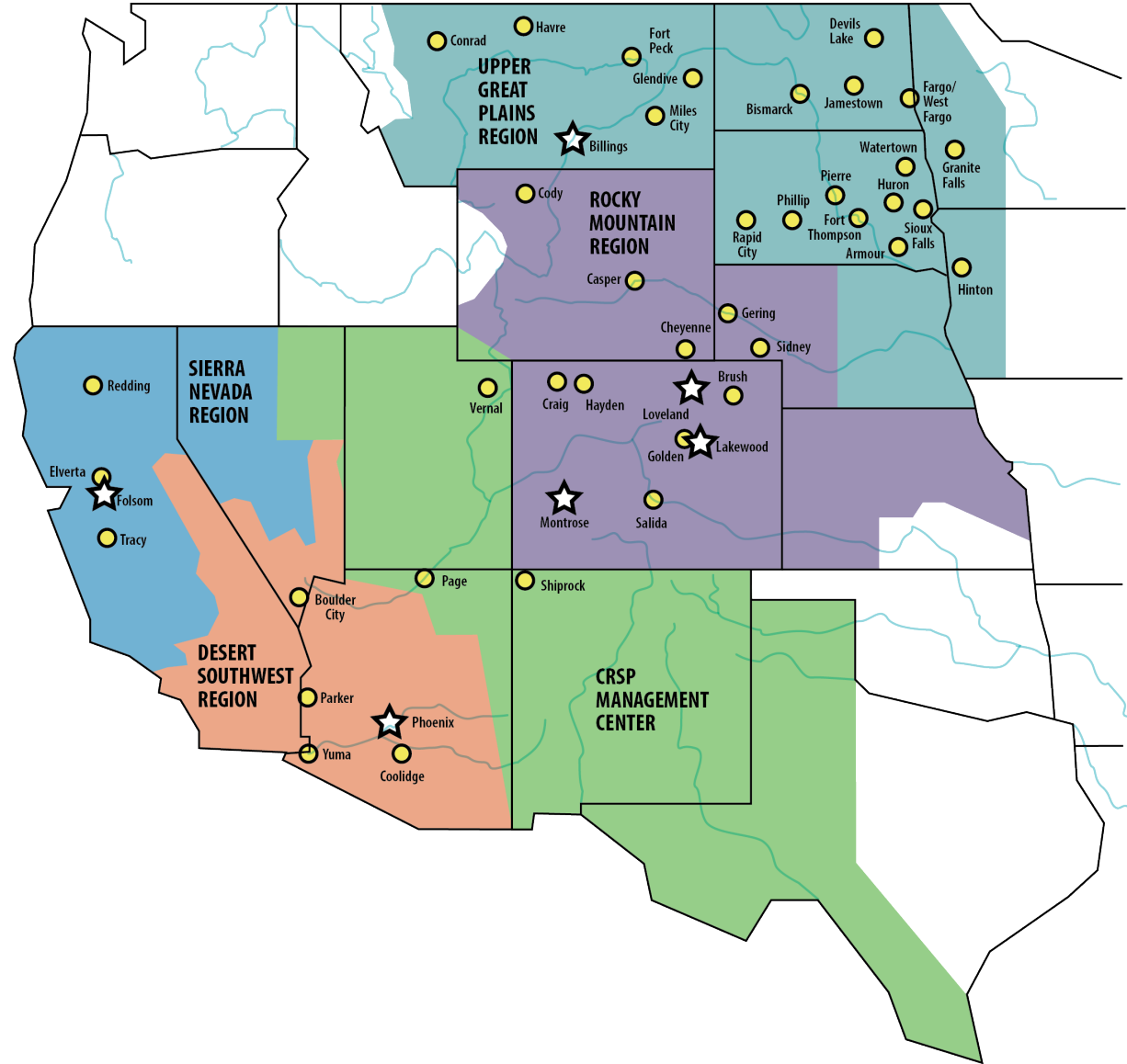
In the West

- Balancing distributed and broad system
- 4 regions
- 1 Management Center
- 15-state footprint
- Top 10 largest transmission utility in the country



Regions

- WAPA's footprint and duty stations



WAPA's history

- Reclamation Act of 1902
- Economy Act
- Flood Control Act of 1944
- DOE Act

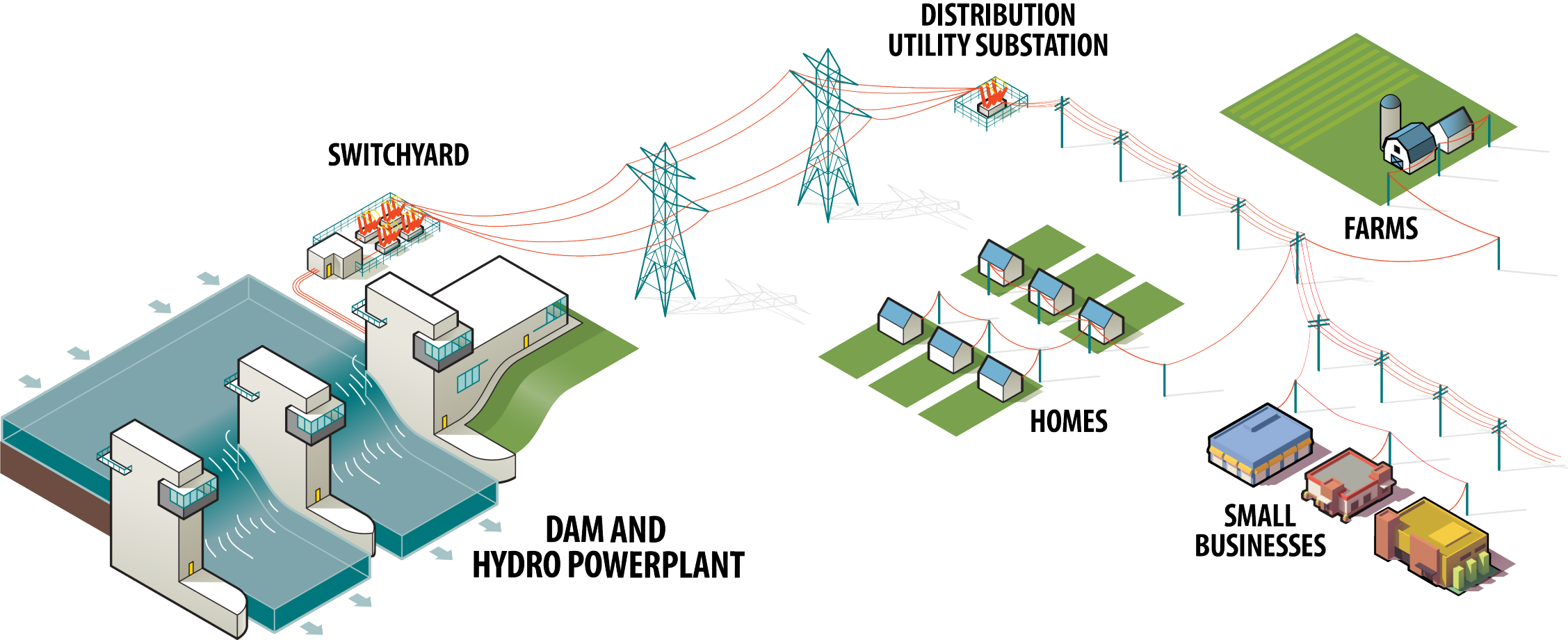


Customer focused

- Around 700 customers
 - Cities and towns
 - Rural electric cooperatives
 - Irrigation districts
 - Public power districts
 - Federal and state agencies
 - Native American tribes
- Preference entities under the 1939 Reclamation Reform Act



Hydroelectric power distribution



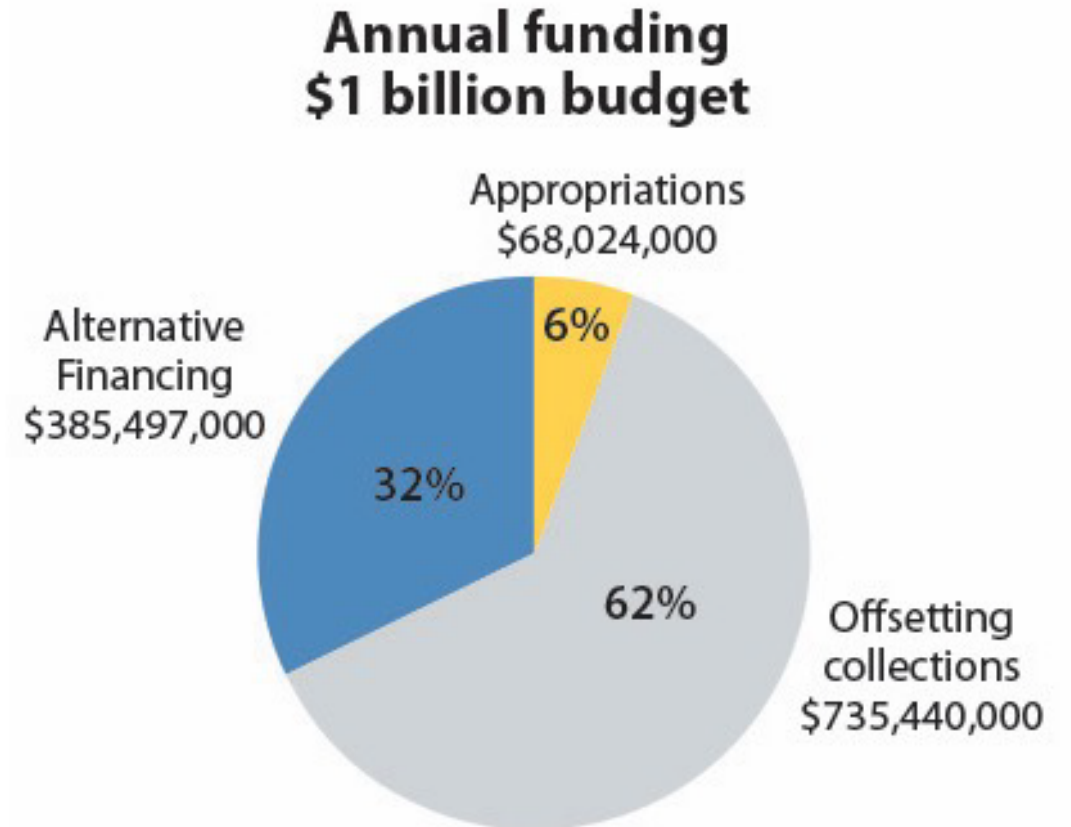
What we manage

- \$4.4 billion in assets
- 112,515 structures
- 17,272 miles of transmission line
- 325 substations
- 293 transformers
- 658 buildings
- 489 communication sites



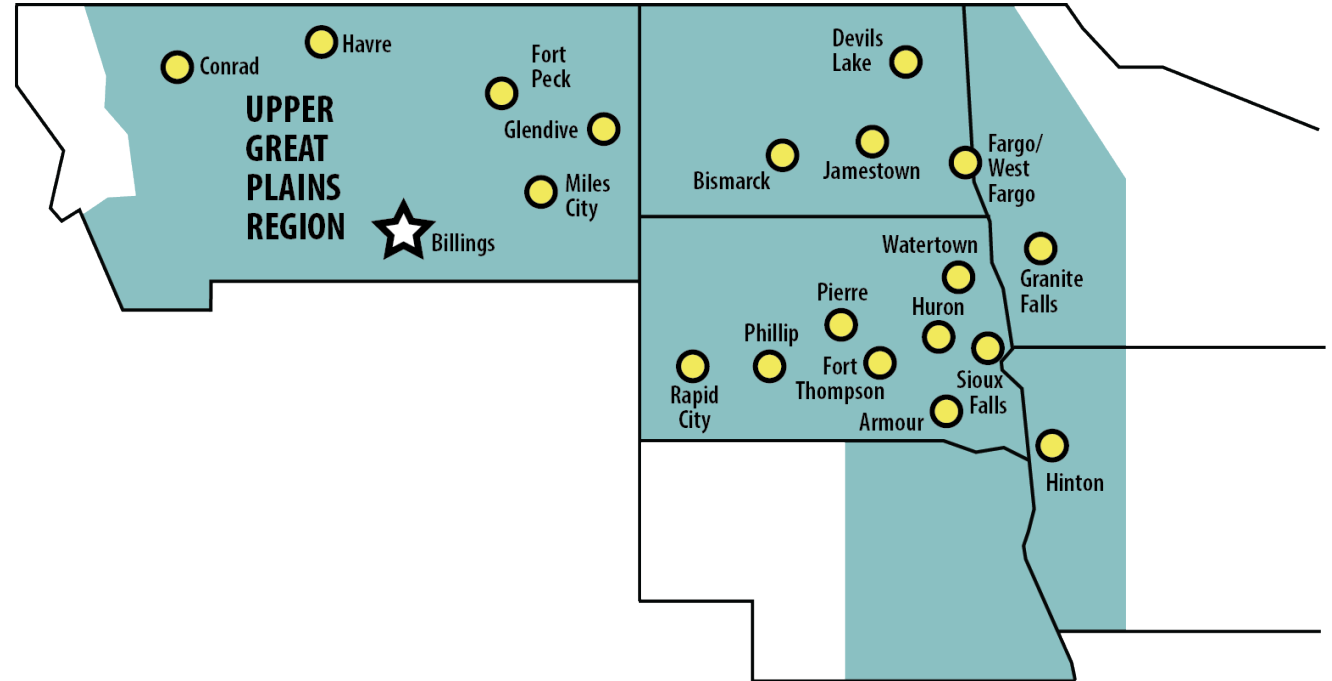
Our budget

- Three sources
 - Appropriations
 - Alternative financing
 - Offsetting Collections
- Several power systems are financed by a revolving fund
- Appropriations are repaid, with interest, by customers through rates, unless exempted by law



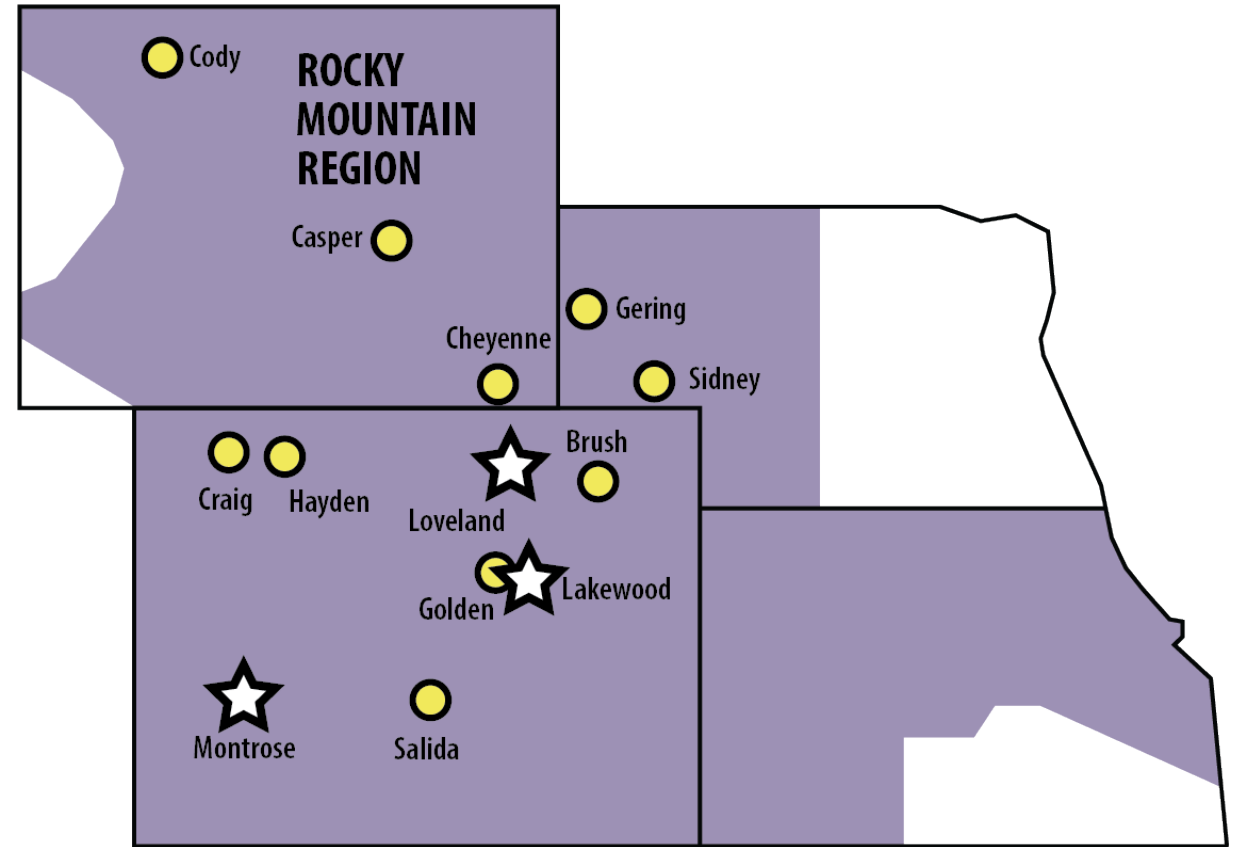
Upper Great Plains

- Largest geographic territory
- Pick-Sloan Missouri Basin Program — Eastern Division
- One-third of WAPA's system
- Only region that has wind integrated



Rocky Mountain

- Loveland Area Projects
 - Fryingpan-Arkansas Project
 - Pick-Sloan Missouri Basin Program—Western Division

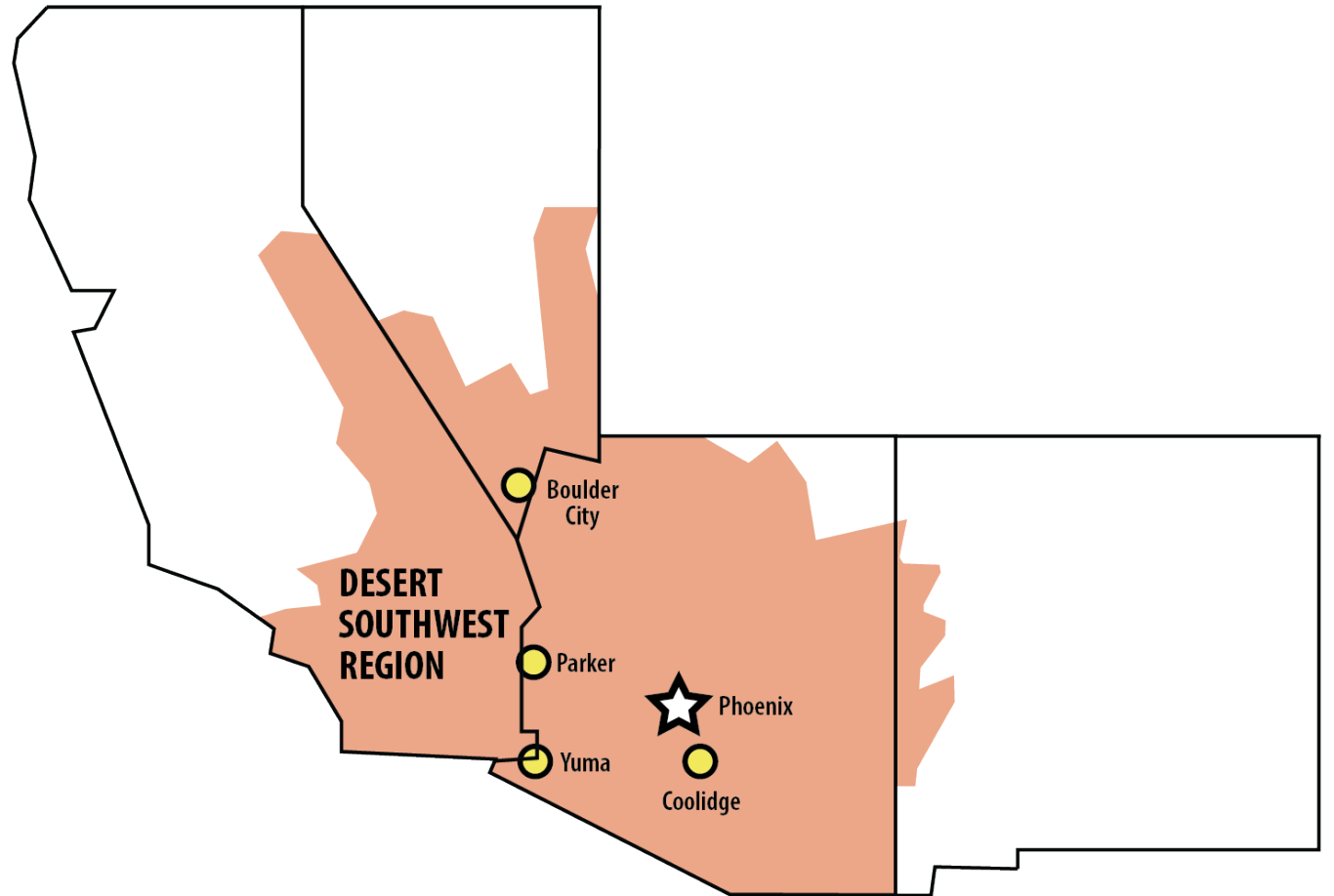


Desert Southwest

- Parker-Davis
- Boulder Canyon

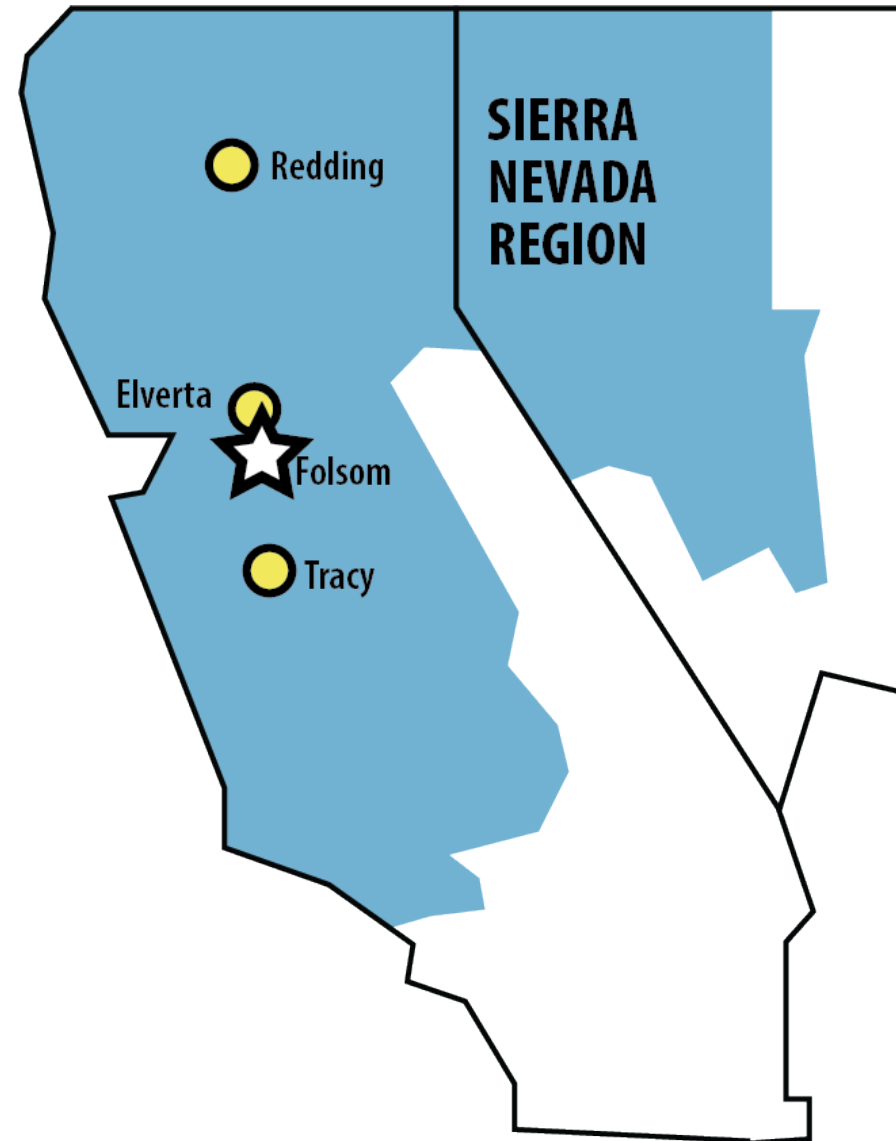
Transmission-only projects

- Pacific NW-SW Intertie
- ED5-to-Palo Verde Hub
- Central Arizona



Sierra Nevada

- Central Valley
- Washoe



What Does WAPA Buy?

- Construction work
 - High-voltage substations (NAICS 237130)
 - Concrete foundations (NAICS 238110)
 - Transmission lines (NAICS 237130)
 - Repair of access roads (NAICS 237990)
 - Microwave communication systems (NAICS 334220)



What Does WAPA Buy? (Continued)

- Construction-related supplies
 - Wood Poles (NAICS 32113)
 - Steel poles (NAICS 423510)
 - Transformers (NAICS 335311)
 - Circuit breakers (NAICS 335313)
 - Surge arrestors (NAICS 335931)
 - Capacitor banks (NAICS 423610)
 - Control switchboards and panels (NAICS 335313)



What Does WAPA Buy? (Continued)

- Miscellaneous supplies and services
 - Large bucket trucks and cranes (NAICS 336212 and 333924)
 - Administrative and warehouse support (NAICS 561110)
 - Janitorial support (NAICS 561720)
 - Construction inspection services (NAICS 541990)
 - Technical support (NAICS 541990)
 - Tree clearing, vegetation management and weed control (NAICS 113310, 561730)



WAPA Small Business Manager Thoughts

- Category Management is HUGE with DOE. OMB is pushing Best-in-Class Contracts. A considerable number of actions will be posted on GWAC, NASA SEWP and GSA. (Examples Veterans Technology Services (VETS) and One Acquisition Solution for Integrated Services (OASIS))
- Be willing to compete
- Ensure you have the appropriate North American Industry Classification System (NAICS) for the services and products that you provide
- Must be registered in SAM (System for Award Management)
- Keep your Small Business Dynamic Search information updated. Include as many parity programs as possible. **Keywords** are important in your SB Dynamic Search description
- Attend Site Visits and Pre-Bid Conferences
- Ensure you respond to Contractor Performance Assessment Reporting Systems (CPARS) request
- Statement of Capabilities are a great marketing tool
- **Most actions are published on Sam.gov and FedConnect.net**



Upcoming FY23 and FY24 Actions

- DSW Vail Tortolita Transmission Line Rebuild (Over \$10M)
- DSW Parker-Blythe Transmission Line Rebuild (Over \$10M)
- DSW Gila 69kV Rebuild Stage 08 (Over \$10M)
- DSW Coolidge Station Service (\$500k to \$1M)



Upcoming FY23 and FY24 Actions

- DSW Bouse Upgrade Construction (Over \$10M)
- DSW Glen Canyon Station Service Foundations (\$1M to \$5M)
- DSW COL-RGS 230kV Realignment (\$1M to \$5M)
- DSW Crossarm Peak Microwave (\$1M to \$5M)
- DSW Basic Water Hen-ARM Double Circuit 230kV
Transmission Line Rebuild (\$1M to \$5M)



Upcoming FY23 and FY24 Actions

- DSW WAPA-Wide Communication Tower Inspection, Maintenance, Repair IDIQ Recompete (\$1M to \$5M)
- DSW Mead Water/Road Repair (\$500k to \$1M)
- DSW Yuma Maintenance Building Repairs – Fire Phase 2 (\$500k to \$1M)
- DSW Coolidge Station Service (\$500k to \$1M)



Upcoming FY23 and FY24 Actions

- DSW Breaker IDIQ (\$1M to \$5M)
- DSW WAPA Wide Tower IDIQ (\$1M to \$5M)
- DSW Vegetation Management (\$1M to \$5M)
- DSW Technical Services (Over \$10M)
- DSW Administrative Services (Over \$10M)
- DSW WAPA Wide Steel Poles (Over \$10M)



Byron McCollum

720-962-7154

mccollum@wapa.gov



www.wapa.gov



[@westernareapowr](https://twitter.com/westernareapowr)



[western-area-power-administration](https://www.linkedin.com/company/western-area-power-administration)



[WesternAreaPower1](https://www.youtube.com/WesternAreaPower1)



[westernareapower](https://www.instagram.com/westernareapower)



[wapa.gov](https://www.facebook.com/wapa.gov)

