



***61 Civil Engineer &  
Logistics Squadron  
SAME Brief***

***Lt Col Woo-Suk “Sean” Chun***

***2 Dec 2021***



# *Agenda*

- **Space Force Updates**
- **Project Timeline**
- **Execution Tool**
- **FY22 – 27 Integrated Priority List**
  - **Project Opportunities**



# U.S. Space Force



U.S. AIR FORCE



UNITED STATES  
SPACE FORCE

Established: 20 Dec 2019  
CSO: Gen John W. Raymond  
HQ: The Pentagon



Space Operations Command (SpOC)  
Est 21 Oct 2020  
Lt Gen Stephen Whiting  
Peterson SFB, CO



Space Training and Readiness Command (STARCOM)  
Est 24 Apr 2021  
Brig Gen Shawn Bratton  
Peterson SFB, CO



Space Systems Command (SSC)  
Est 13 Aug 2021  
Lt Gen Michael Guetlein  
Los Angeles AFB, CA



Peterson-Schriever Garrison  
Peterson SFB, CO



Buckley Garrison  
Buckley SFB, CO



Space Launch Delta 30  
Vandenberg SFB, CA



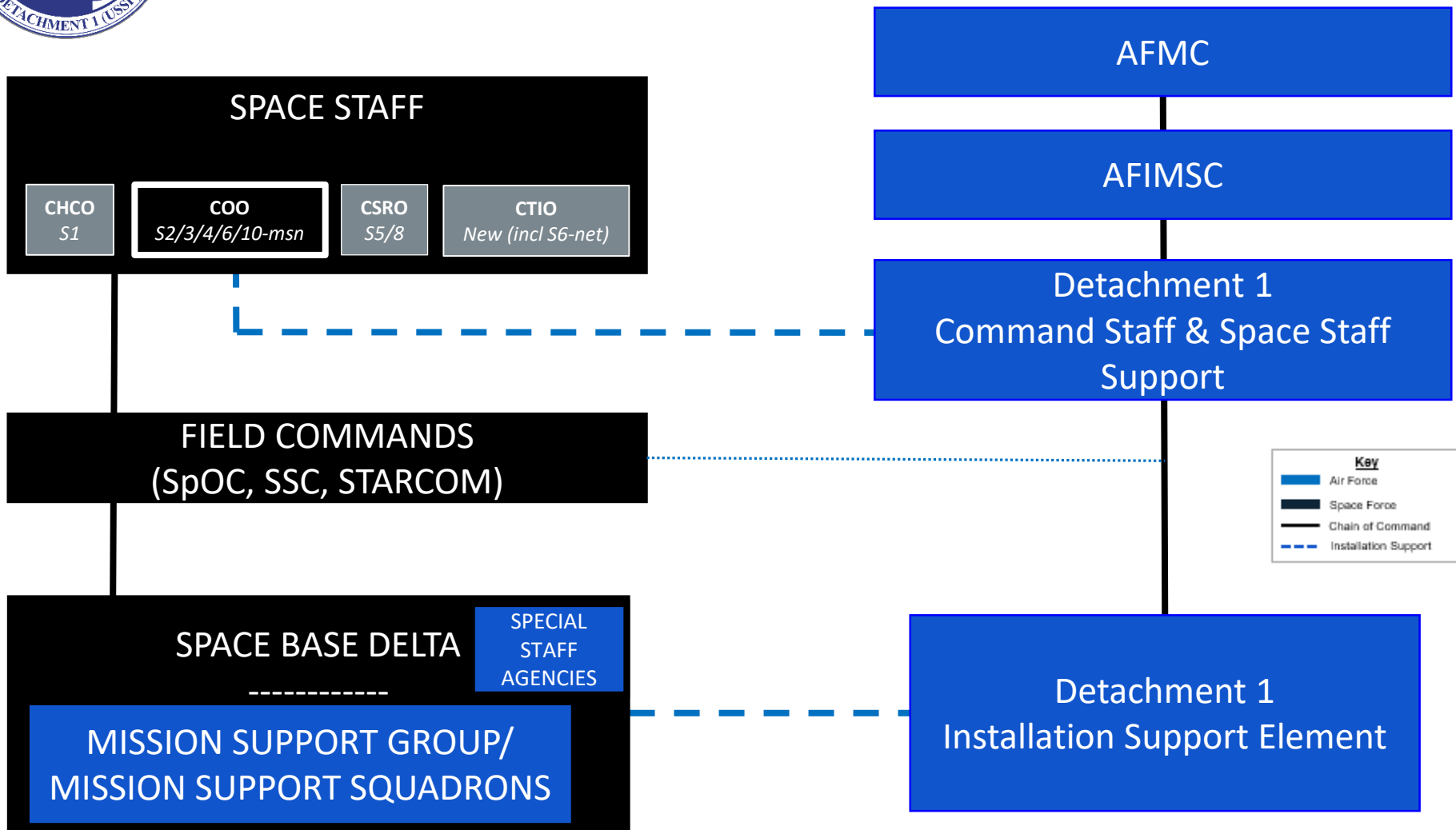
Space Launch Delta 45  
Patrick SFB, FL



Los Angeles Garrison  
Los Angeles AFB, CA



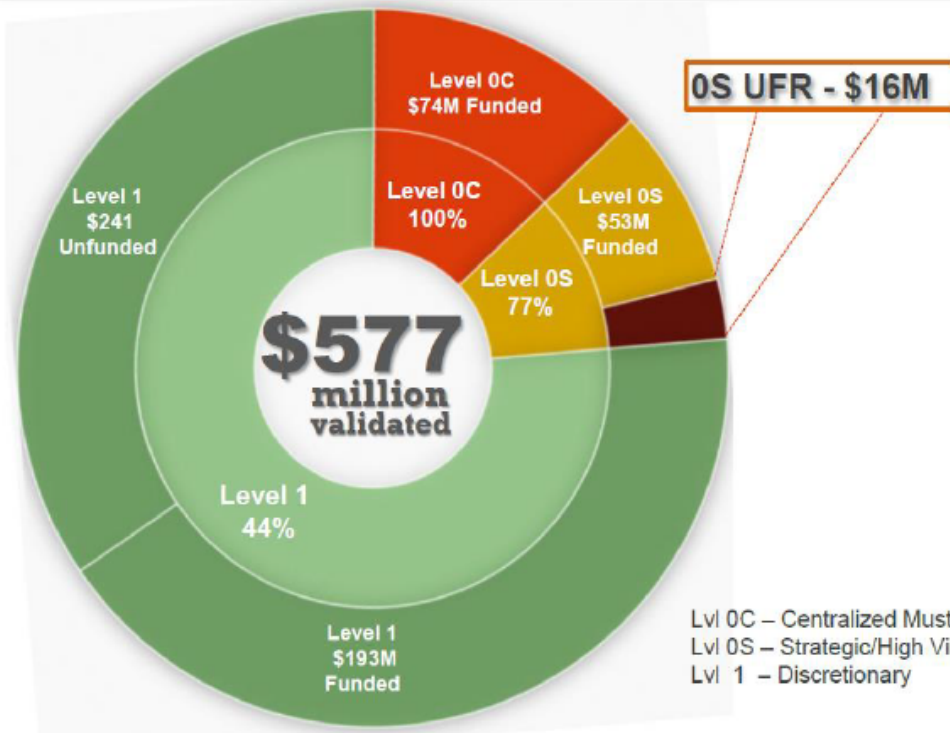
# AFIMSC Detachment 1 – Interaction



ALIGNED WITH SPACE BASE DELTA & SPACE STAFF



# FY22 USSF Allocation Summary



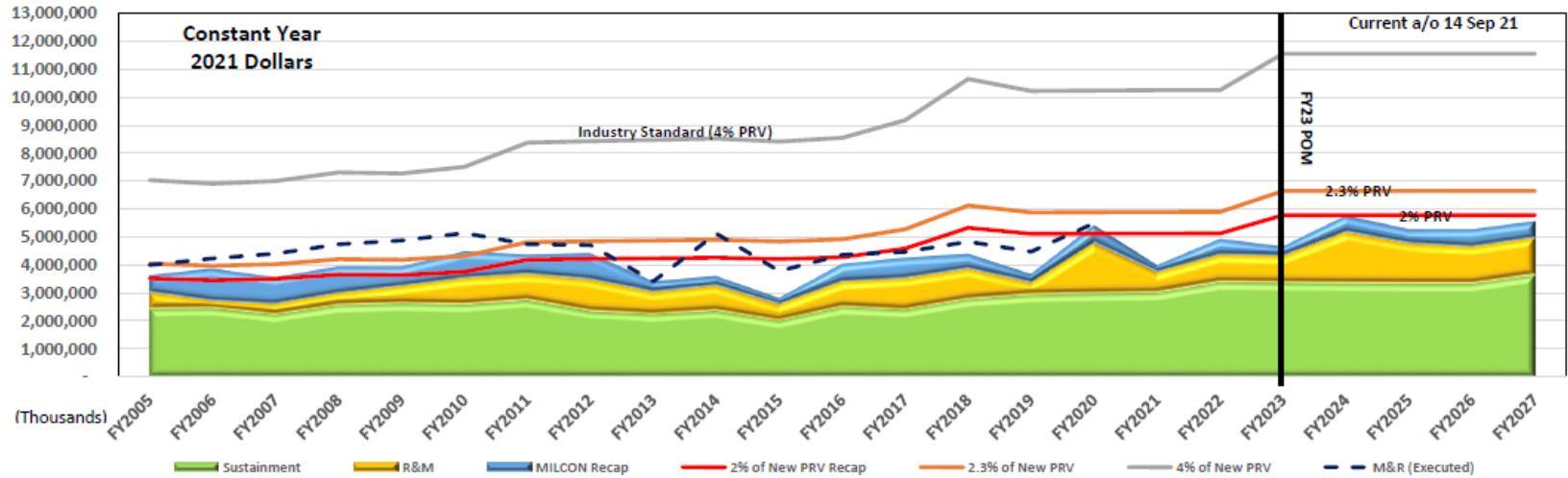
■ Level OC ■ Level OS ■ Level 1

Lvl OC – Centralized Must Pays  
 Lvl OS – Strategic/High Vis  
 Lvl 1 – Discretionary

LEVEL OC				
EM	FY22 Validated	FY22 Allocation	FY22 UFR	FY22 % Funded
Facility Operations	\$ 74.3	\$ 74.3	\$ -	100%
<b>Level OC TOTAL</b>	<b>\$ 74.3</b>	<b>\$ 74.3</b>	<b>\$ -</b>	<b>100%</b>
LEVEL OS				
EM	FY22 Validated	FY22 Allocation	FY22 UFR	FY22 % Funded
Facility Operations	\$ 62.2	\$ 46.6	15.60	75%
Facility Recap & Sustainment	\$ 6.9	\$ 6.9	0.00	100%
Housing	\$ 0.1	\$ 0.1	0.00	100%
<b>LEVEL OS TOTAL</b>	<b>\$ 69.2</b>	<b>\$ 53.6</b>	<b>\$ 15.6</b>	<b>77%</b>
LEVEL 1				
EM	FY22 Validated	FY22 Allocation	FY22 UFR	FY22 % Funded
Facility Recap & Sustainment	\$ 414.2	\$ 188.0	\$ 226.2	45% <sup>13%</sup>
Facility Operations	\$ 18.1	\$ 3.4	\$ 14.7	19%
Housing	\$ 1.5	\$ 1.5	\$ -	100%
<b>LEVEL 1 TOTAL</b>	<b>\$ 433.8</b>	<b>\$ 192.9</b>	<b>\$ 240.9</b>	<b>44%</b>
<b>GRAND TOTAL</b>	<b>\$ 577.3</b>	<b>\$ 320.8</b>	<b>\$ 256.5</b>	<b>56%</b>



# FY23 POM Maintenance & Repair as Percentage of PRV



M&R as a % of PRV	Historical																	FYDP				
	FY2006	FY2007	FY2008	FY2009	FY2010	FY2011	FY2012	FY2013	FY2014	FY2015	FY2016	FY2017	FY2018	FY2019	FY2020	FY2021	FY2022	FY2023	FY2024	FY2025	FY2026	FY2027
Programmed	2.23%	2.02%	2.15%	2.16%	2.37%	2.08%	2.09%	1.61%	1.68%	1.34%	1.88%	1.85%	1.64%	1.43%	2.11%	1.55%	1.91%	1.60%	1.98%	1.81%	1.81%	1.91%
Executed	2.45%	2.52%	2.59%	2.68%	2.74%	2.26%	2.24%	1.61%	2.40%	1.80%	2.04%	1.95%	1.81%	1.75%	2.15%	0.00%	0.00%	0.00%	0.00%	0.00%	0.00%	0.00%

\$M	FY23	FY24	FY25	FY26	FY27	FYDP
Sustainment (***)78F)	3,644.2	3,697.2	3,759.5	3,837.2	4,296.5	19,234.6
Restoration & Modernization (***)76F)	945.7	1,934.9	1,526.3	1,422.9	1,452.7	7,282.5
Mission Augment (22179F)	78.2	73.7	75.0	76.5	78.1	381.5
<b>Total</b>	<b>4,668.1</b>	<b>5,705.8</b>	<b>5,360.8</b>	<b>5,336.6</b>	<b>5,827.3</b>	<b>26,898.6</b>



# LA AFB Communities

- LA AFB
  - El Segundo
  - ~4,500 personnel
- San Pedro Housing Areas
  - Ft MacArthur
  - Pacific Heights
  - Pacific Crest



Pacific Crest

Pacific Heights



Fort MacArthur

**20 miles separates Los Angeles AFB and San Pedro Housing**



# *Facilities and Services*



## El Segundo

- Mission
- Mission Support

## San Pedro

- Housing
- Community & QoL Services



***El Segundo + San Pedro = Full-Service AFB***





## ***FY22/23 Project Summary***

- **FY22 – 36 Projects**
  - **Focus Areas:** Roof repair and mechanical system repair and re-commissioning
- **FY23 – 20 Projects**
  - **Focus Areas:** Fire protection system, exterior work, and architectural programming



# LAAFB Project Execution Tools

- **8(a) Small Business: Eligible for sole source set-aside**
  - Certified by SBA under the Small Business Act (approx. 90 days)
  - Opportunities at LAAFB: provide capabilities package to Mr. Dalice Va, Contracting Officer
    - Email: [Dalice.va@spaceforce.mil](mailto:Dalice.va@spaceforce.mil);
    - Telephone: 310-653-5374
  - Contractors supported by Glendale-SBA office given preference
- **PRIDE Task Orders: variation of an IDIQ that exists at LAAFB**
  - “Master Sub-Contractor Agreement” must be made with PRIDE (Prime Contractor) to execute work for LAAFB
  - Quick execution tool that is often utilized for end of year execution and various studies/technical analysis
  - Contact Chris Paek at [chris.paek@prideindustries.com](mailto:chris.paek@prideindustries.com) for more information