

NAVFAC
Naval Facilities Engineering Systems Command

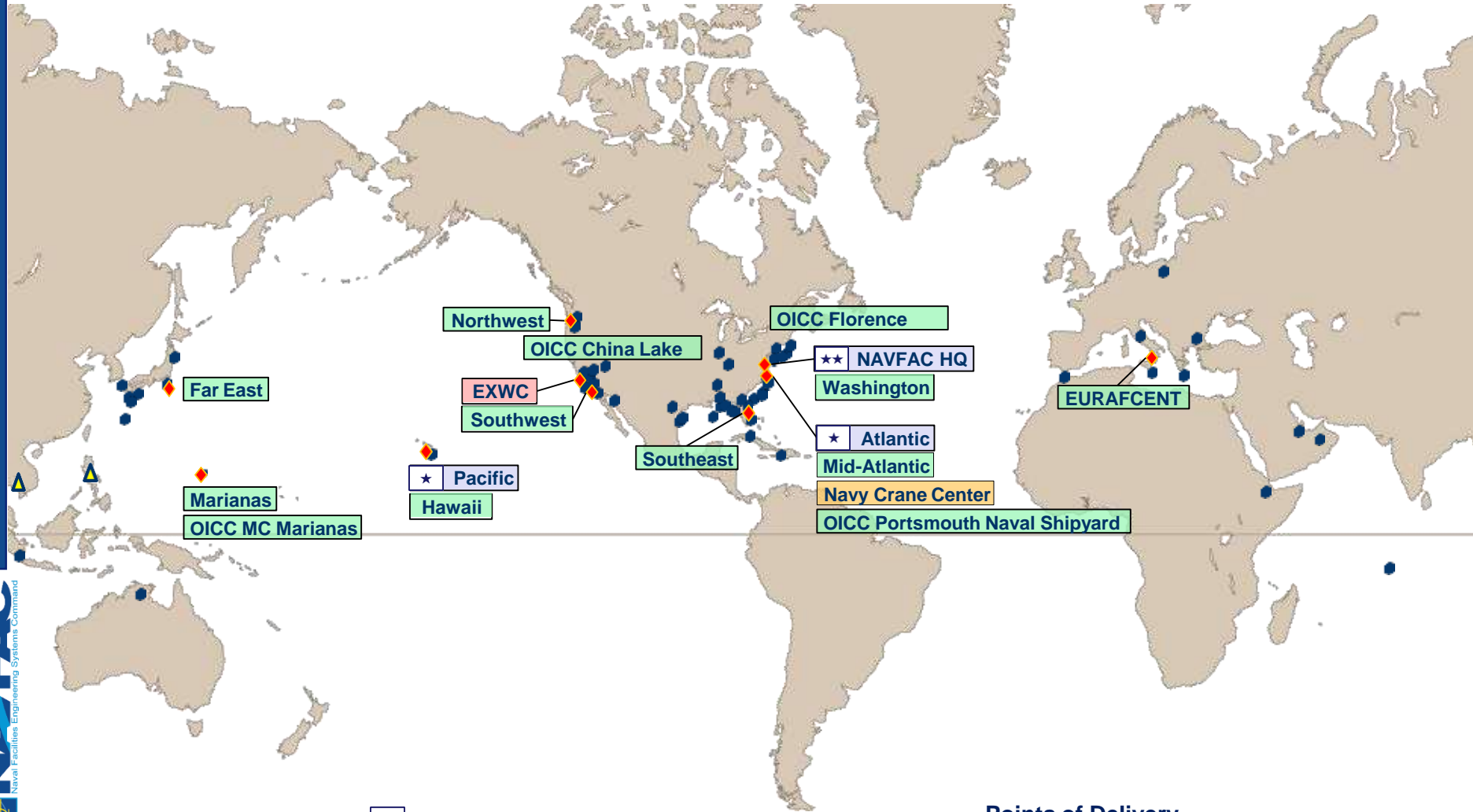
SAME San Diego

CAPT Laurie Scott, PE

13 DEC 2023

CUI

NAVFAC Worldwide Laydown - \$15B+ Global Enterprise

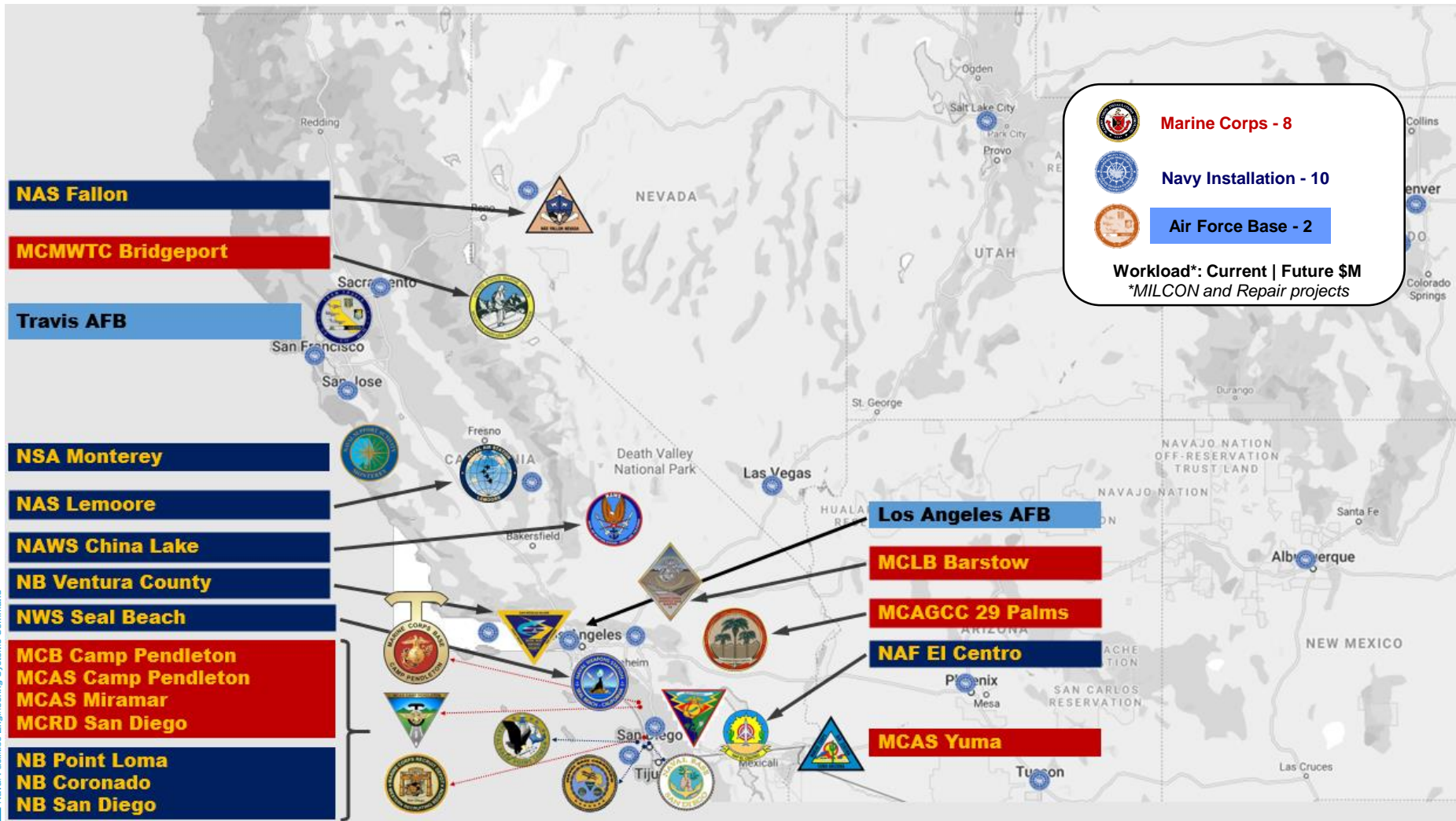


- ★★ NAVFAC ECH II Commands: 1
- ★ NAVFAC ECH III Commands: 2
- NAVFAC ECH IV Commands: 13
- NAVFAC Specialty Center: 1
- NAVFAC Warfare Center: 1

Points of Delivery

- ◆ Field Locations
 - 71 Navy PWDs
 - 24 USMC FEADs
 - 9 USAF ROICCs
- ▲ Theater Engineers

NAVFAC SW Area of Responsibility



~3,300 Civilians, ~140 Military, ~\$3B+ of Products & Services Executed Annually Across 6 States!

NAVFAC SW Core Senior Leaders



★ Executive Steering Group

Products and Services Executed/Supported by Core

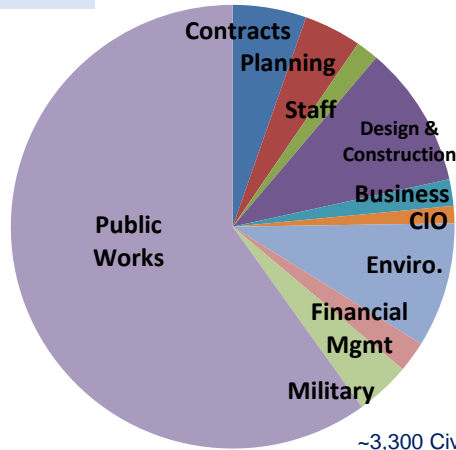
- Design, Construction & Repair
- Environmental Compliance & Restoration
- Facilities Planning, Operations & Sustainment
- Utilities and Energy Management
- Real Estate
- Transportation and Ship to Shore Support
- Specialized Technical Services

FY24 Core and Field Leadership Turnover

Title	Person departing in FY24
NAVFAC SW XO	CAPT Willey
NAVFAC SW OPS	CAPT Burket
PWO NAWS China Lake	CDR Ben Turner
PWO NAF El Centro	LCDR Puckett
PWO MC Air Station Camp Pendleton	LCDR Roberts
PWO Barstow	LCDR Webb
FEAD NB San Diego	LCDR Herm
FEAD NB Ventura County	LCDR Thompson
FEAD NAS Lemoore	LCDR Homewood
FEAD 29 Palms	LCDR Stitt
PWO Mountain Warfare Training Center	LT Witt
FEAD MCAS Miramar	LCDR(s) Clark
FEAD El Centro	LCDR(s) de Leon
FEAD NAS Fallon	LT Clopton
FEAD NWS Seal Beach	LCDR(s) Arellano

Demographics

Staffing



~3,300 Civilians and 140 Military at 19 locations

Navy	USMC	USAF
10 Installations	8 Installations	1 Installation
11,000 Facilities	10,000 Facilities	1,725 Facilities
19 Runways	12 Runways	3 Runways
61 Hangars	30 Hangars	8 Hangars
1.8M Acres	795k Acres	6,400 Acres
189 Special Areas	640 Training Areas/Ranges	
42 Piers/Wharves	6 Landing Beaches/Docks	
8 Small Arms Ranges	135 Small Arms Ranges	
17 Reserve Centers	13 Reserve Centers	
530 Tenant Commands	81 Tenant Commands	



Major Programs

- Joint Strike Fighter
- Old Town Campus Revitalization
- Unmanned Systems
- Naval Special Warfare - Coastal Campus
- Fallon Range Training Complex
- OICC China Lake

Core Competencies

- Design, Repair & Construction
- Environmental Compliance & Restoration
- Facilities Planning, Operations & Sustainment
- Utilities and Energy Management
- Real Estate
- Transportation and Ship to Shore Support
- Specialized Technical Services

Major Supported Commands

- NAVAIR
- NAVSEA
- NAVWAR
- NIWC
- 3rd Fleet
- I MEF
- Naval Special Warfare
- Strategic Systems Programs
- MCI West
- NRSW

NAVFAC SW Construction Footprint



Post Award Construction Workload @ \$6 Billion! Tracking to Award \$4 Billion in FY24/25 ...and Poised to Do More

Top 6 Major Programs

NBSD Port Recapitalization



Navy OTC Revitalization



FRTC Modernization



OICC China Lake



Joint Strike Fighter



NIC/NPS-M



NAVY & Air Force MILCON - Planned

Location	PROJ#	PROJECT TITLE	Delivery Method	Program Amount	Planned RFP Date
NAVBASE SAN DIEGO	1301	MICROGRID AND BACKUP POWER	DB	\$5M	FY24Q2
NAVBASE CORONADO	961U	INTEGRATED TRAINING FACILITY	DB	\$6M	FY24Q3
	Q759U	SOF SAN CLEMENTE ISLAND TRAINING SUPPORT FACILITY	DB	\$3M	FY24Q3
	Q821	SOF WARCOM OPERATIONS SUPPORT FACILITY	DB	\$76M	FY24Q1
	Q823	SOF WARCOM OPERATIONS SUPPORT FACILITY PHASE 2	DB	\$42M	FY25Q1
NAS FALLON	442	TRAINING RANGE LAND ACQUISITION	DB	\$29M	FY25Q3
	445	TRAINING RANGE LAND ACQUISITION – PHASE 2	DB	\$48M	FY28Q1
	446	TRAINING RANGE LAND ACQUISITION & SECURITY IMPROVEMENTS	DB	\$66M	TBD
NAVBASE POINT LOMA	627	RECONFIGURABLE CYBER LABORATORY	DBB	\$62M	FY26Q3
TRAVIS AFB CA	3009	CONSTRUCT CHILD DEVELOPMENT CENTER	DB	\$54M	FY25Q2

Does Not Include FY24 O&M & Working Capitol Projects Valued at \$698M

(Data contained herein is based on the best available information and is subject to change)

USMC MILCON - Planned

Location	PROJ#	PROJECT TITLE	Delivery Method	Program Amount	Planned RFP Date
MCRD	2802	AMBULATORY CARE CENTER	DBB	\$102M	FY24Q3
	314	RECRUIT BARRACKS	DBB	\$94M	FY24Q2
MCB CAMP PENDLETON	1241	WAREHOUSE REPLACEMENT	DB	\$22M	FY24Q3
	2002	CLB MEU COMPLEX	DB	\$84M	FY24Q2
	414	AMBULATORY CARE CENTER ADDITION/ALTERATION	DBB	\$15M	FY25Q2
MCAGCC TWENTYNINE PALMS	1238	Construction of Grid Stability & Resiliency 10 MW Battery Energy Storage, Various Buildings	DB	\$35M	FY24Q1
	1241	COMMUNICATIONS TOWERS	DB	\$42M	FY24Q3
	407	AIRCRAFT REFUELING FACILITY, MARINE CORPS MOUNTAIN WARFARE TRAINING CENTER	DBB	\$14M	FY24Q4
	481	ENERGY RESILIENCE, PHASES 3 AND 4	DB	\$26M	FY24Q2
MCAS CAMP PENDLETON	143	P-143 Advanced Microgrid Infrastructure Improvement (ERCIP)	DB	\$9M	FY24Q3
MCAS MIRAMAR	254	F-35C CENTRALIZED ENGINE REPAIR FACILITY	DB	\$31M	FY24Q2
	283	ELECTRICAL INFRASTRUCTURE, ON-SITE GENERATION, AND MICROGRID IMPROVEMENTS	DB	\$29M	FY25Q4
	3800	AMBULATORY CARE CENTER / ADDITION-ALTERATION	DBB	\$103M	FY24Q2

Does Not Include FY24 O&M & Working Capitol Projects Valued at \$176M

(Data contained herein is based on the best available information and is subject to change)

Old Town Campus Revitalization

What is Navy OTC Revitalization?

- A Navy project in San Diego to repair or replace obsolete facilities on 70.3-acre Navy Old Town Campus to provide ~1.7M SF of secure, safe, mission-capable state-of-the-art facilities for NAVWAR.

Why is it needed?

- World War II-era B-24 Bomber Factories are beyond their useful life and their degradation is affecting NAVWAR's cyber warfare mission, security, and workforce safety.

How would it occur?

- Revitalization could occur through Navy-funded development or through a public-private partnership. Public-private options could benefit San Diego through potential development of housing, retail, commercial, and transit center.

What's next?

- The Navy received OTC Revitalization proposals from shortlisted potential master developers on August 9, 2023, in response to **Step 2: Request for Proposals**. The Navy is now reviewing proposals.
- The Navy plans to select one proposer by the end of calendar year 2023 to enter into a period of exclusive negotiations



70.3 Acres
Federal Land.
Near Freeways,
Airport, and
Downtown.

NAVWAR
Generates more
than \$3.5B and
29,000 Jobs in
San Diego



SCAN ME

Stay informed – sign-up for our email list at
www.NAVWAR-Revitalization.com

Pacific Deterrence Initiative (PDI)



- INDOPACOM received direction JAN 2023 to support projects in the Federated States of Micronesia in the Shift to the Pacific.
- Multi-billion dollar program profile of projects across 12 Countries.
- NAVFAC SW supporting development of FY26 MILCONs on the islands of Yap, Palau and Kosrae.

Capabilities Delivered

Airfields; Ports; Munitions Maintenance;
Prepositioning; Fuels; Equipment Maintenance;
Communications; MDA/THAD

The Success of This Program Hinges on Your Support

Active Multiple Award Construction Contracts (MACCs)

Commercial & Institutional MACC	Waterfront MACC	Hubzone SB MACC	Medical Facility MACC	POL Fuels MACC	Paving MACC	Fire Protection SB
2.5B Capacity 0M Available	750M Capacity 430M Available	495M Capacity 419M Available	1.0B Capacity 892M Available	150M Capacity 110M available	99M Capacity 65M Available	240M Capacity 108M Available
<ul style="list-style-type: none"> BALFOUR BEATTY CONSTRUCTION, LLC B.L. HARBERT INTERNATIONAL, L.L.C. CLARK CONSTRUCTION GROUP-CALIFORNIALP ECC INFRASTRUCTURE LLC HARPER CONSTRUCTION COMPANY, INC HEFFLER CONTRACTING GROUP KORTE CONSTRUCTION COMPANY M A MORTENSON COMPANY R A BURCH CONSTRUCTION CO INC RQ CONSTRUCTION, LLC SUNDT CONSTRUCTION, INC. WALSH FEDERAL, LLC WEBCOR CONSTRUCTION LP WHITING-TURNER CONTRACTING COMPANY,THE 	<ul style="list-style-type: none"> DoD MARINE CONSTRUCTORS, JV THE DUTRA GROUP GRANITE-HEALY TIBBITTS, JV MANSON CONSTRUCTION CO. MARATHON CONSTRUCTION CORP. R.E. STAITE ENGINEERING, INC. REYES CONSTRUCTION, INC. TNT CONSTRUCTORS 	<ul style="list-style-type: none"> I E PACIFIC INC PACIFIC WEST BUILDERS VANDER WERFF, PETER CONSTRUCTION HEFFLER CONTRACTING GROUP SEA PAC ENGINEERING, INC INTERCONTINENTAL CNSTR CONTG SGS, L.L.C. SHORE HERMAN JV CJW JOINT VENTURE 	<ul style="list-style-type: none"> DPR-RQ CONSTRUCTION GILBANE FEDERAL, JV HENSEL PHELPS CONSTRUCTION KIEWIT BUILDING GROUP THE ROBINS & MORTON GROUP STRUCTSURE PROJECTS WALSH CONSTRUCTION 	<ul style="list-style-type: none"> Goshawk, LLC KINLEY CONSTRUCTION CO NOVA GROUP INC POND CONSTRUCTORS INC 	<ul style="list-style-type: none"> CJW CONSTRUCTION, INC ROMERO GENERAL CONSTRUCT MARTIN BROS CONSTRUCTION DE LA FUENTE CONSTRUCTION COMMAND PERFORMANCE CONST ACCESS GENERAL CONTRACT PORTILLO CONCRETE, INC 	<ul style="list-style-type: none"> SPEEDWAY ORION JV SOUTH BAY EDC, INC SOUTHWESTERN DAKOTA, INC HEFFLER CONTRACTING GROUP HCI SYSTEMS, INC MILLENNIUM FIRE PROTECTION CORP
Heavy Horizontal MACC	Dry Utilities SB MACC	Airfield Paving MACC	General Construction SB MACC	Wet Utilities SB	HVAC SB	Roofing SB
1B Capacity 790M Available	495M Capacity 495M Available	495M Capacity 143M Available	495M Capacity 190M Available	249M Capacity 111M Available	200M Capacity 82M Available	240M Capacity 175M Available
<ul style="list-style-type: none"> A&R PACIFIC-GARNEY FEDERAL, JV BALDI BROS BARNARD CONSTRUCTION BCSS CJW CONSTRUCTION FLATIRON WEST HEFFLER CONTRACTING GROUP REYES CONSTRUCTION RQ-ORION, JV R.C. CONSTRUCTION 	<ul style="list-style-type: none"> LEAD BUILDERS, INC POWER PRO PLUS INC SES CIVIL AND ENVIRONMENTAL LLC SOUTH BAY EDC INC SOUZA CONSTRUCTION, INC SYNERGY ELECTRIC COMPANY UTILITY CONSTRUCTION COMPANY INC 	<ul style="list-style-type: none"> GRANITE CONSTRUCTION BALDI BROS COFFMAN SPECIALTIES PAVE-TECH SOUTHWEST CONCRETE PAVING 	<ul style="list-style-type: none"> HEFFLER CONTRACTING GROUP HHI CORPORATION I.E. PACIFIC PETER VANDER WERFF CONST R.A. BURCH CONSTRUCTION 	<ul style="list-style-type: none"> BETHEL-GARNEY FEDERAL JV FRAWNER CORPORATION TRANSTAR PIPELINE & ORION CONST JV PATE CONSTRUCTION CO., INC. CENTRAL ENVIRONMENTAL INC. 	<ul style="list-style-type: none"> ASTRO MECHANICAL CONTRACTORS INC HEFFLER CONTRACTING GROUP PUBLIC WORKS CONTRACTOR INC SOUZA CONSTRUCTION INC JA'NUS VENTILATION AND MECHANICAL ABLE HEATING & AIR CONDITIONING 	<ul style="list-style-type: none"> SOUTHWEST CONSTRUCTION & PROPERTYMANAGEMENT BISHOP, INC. J DAVIS CONSTRUCTION MANAGEMENT INC TRUMBLE CONSTRUCTION, INC. B.C. SCHMIDT CONSTRUCTION, INC. HEFFLER CONTRACTING GROUP

Enabling MACCs for Improved Execution Performance

Future MACCs

Title	Type	Capacity	Est. Award
Secure Spaces	UR	\$249M	Q1 FY24
Demolition	UR	\$249M	Q1 FY24
Airfield Paving	UR	\$495M	Q2 FY24
HVAC	SB	\$200M	Q2 FY24
Wet Utilities	SB	\$249M	Q2 FY24
General Construction	8(a)	\$395M	Q3 FY24
Commercial & Institutional (C&I)	UR	\$3.0B	Q3 FY24
Fire Protection	SB	\$240M	Q3 FY24
Roofing	SB	\$240M	Q4 FY24
Waterfront	UR	\$750M	Q2 FY26

Architect/Engineering (A-E) IDIQ Contracts

CONTRACT TITLE	TYPE	FIRM
• Multi-disciplinary	SB	Techtonics, dba Andrew C Chen
• Civil	UR	Michael Baker International
• Builders Facilities Assessments	MC WW	Cardno-Amec Foster Wheeler
• Cost, Scheduling, TIAs, REAs	SB	Hunter Pacific Group
• Geotechnical	8(a)	Del Mar Environmental & Construction
• Electrical / Mechanical / Fire Protection	SB	MA Engineers, JV
• Encroachment Services	-	Cardno GS
• Waterfront	UR	GHD-COWI, JV
• Structural	SB	Reid Middleton
• Facility Planning	SB	Makers Architecture & Urban Design
• Architect (multi-discipline)	UR	Jacobs Government Services
• Commissioning	SB	DAV Energy Solutions Inc.
• Electrical / Mechanical / Fire Protection	SB	Shadpour Consulting Engineers

Current Environmental Partners

Compliance	Natural Resources	Cultural Resources	Restoration
\$238M avail	\$116M avail	\$10M avail	\$621M avail
<p>Compliance:</p> <ul style="list-style-type: none"> MULTI-MEDIA ENV COMPLIANCE GROUP <p>Stormwater:</p> <ul style="list-style-type: none"> NICKLAUS AMEC JV <p>OHS:</p> <ul style="list-style-type: none"> BLACK GOLD INDUSTRIES <p>Spill Response:</p> <ul style="list-style-type: none"> G2RJ INC DBA TREVET <p>Lab Services:</p> <ul style="list-style-type: none"> APTIM <p>Environmental Services:</p> <ul style="list-style-type: none"> APTIM 	<p>Natural Res MAC:</p> <ul style="list-style-type: none"> VERNADERO GROUP GSRC BIORESOURCE CONS HERCULES JV <p>Marine Habitat MAC:</p> <ul style="list-style-type: none"> TIERRA DATA INC MERKEL & ASSOCIATES MILLER MARINE APPLIED MARINE SCIENCES JV <p>HISS MAC:</p> <ul style="list-style-type: none"> TIERRA DATA INC SIERRA JV GSRC ACS HABITAT MGMT, INC ACACIA7 	<p>Cultural Resources MAC:</p> <ul style="list-style-type: none"> FAR WESTERN PALEOWEST, L.L.C STATISTICAL RESEARCH ULTRASYSTEMS ENVIRONMENTAL INC <p>Curation:</p> <ul style="list-style-type: none"> SD ARCHAEOLOGICAL CNTR 	<p>MARAC:</p> <ul style="list-style-type: none"> EA-WOOD-1 MP JV OCH, JV NORTHWIND-CDM JV, LLC BETHEL-TECH PACIFIC JV ECC ENVIRONMENTAL LLC <p>SB EMAC:</p> <ul style="list-style-type: none"> BETHEL-TECH PACIFIC JV CAPE-WESTON JV1, LLC NOREAS APTIM ENVIRONMENTAL REMEDIATION JV INSIGHT TIDEWATER, LLC <p>8(a) EMAC:</p> <ul style="list-style-type: none"> DELMAR-TREVET JV BETHEL-TECH JV SRS-ERRG JV VENTURE, LLC BODHI-TIDEWATER JV1 <p>CERCLA/RCRA:</p> <ul style="list-style-type: none"> TREVET-NOREAS

Others:

- TAP: MANTECH SRS TECHNOLOGIES (**\$68M avail**)
- Range Sustainment: MAC (6 firms) (**\$89M avail**)
- NEPA: ADANTA INC (**\$2M avail**)
- Admin Record: NORTH WIND SITE SERVICES LLC (**\$0 / no task orders**)

Future A-E and Environmental Opportunities

A-E IDIQ Contracts

Title	Type	Capacity	Planned Award Date
Fire Protection	SB	\$30M	Q2 FY24
Waterfront	UR	\$99M	Q3 FY24
Civil	UR	\$99M	Q3 FY24
Civil	8(a)	\$20M	Q3 FY24
Structural	UR	\$99M	Q2 FY24
Surveying & Mapping	UR	\$10M	Q2 FY24
Secure Spaces	UR	\$99M	Q3 FY24
Elec / Mech	UR	\$50M	Q4 FY24

Environmental Basic Contracts

Program	Qty	Capacity (\$M)
Restoration	2	480
Compliance	1	100
Natural Resources	2	82
NEPA	2	85
Admin Record	1	TBD

Execution Analytics

Data Analytics to Inform and Drive P2P

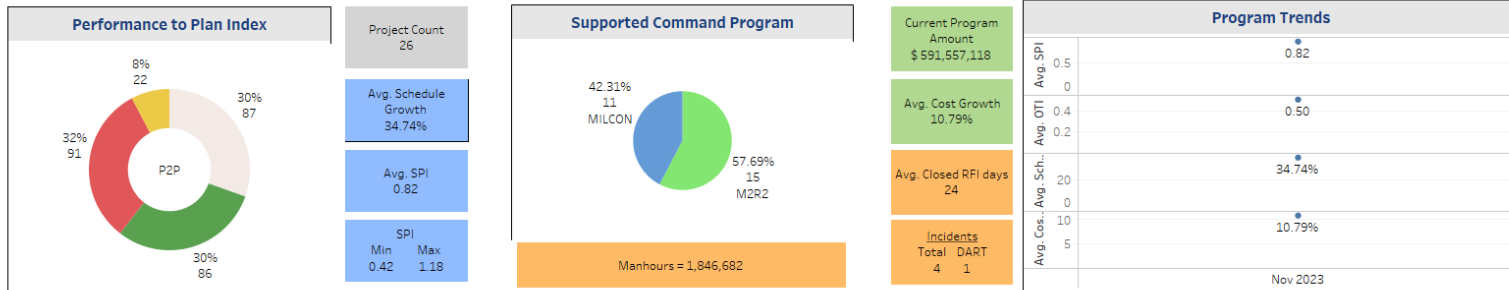
- Performance Assessment Branch (Dashboard Development)
- Operations Assessment Boards (OABs)



PMIS - P2P DASHBOARDS

Dashboard Version 22 Nov 2023

Program Multiple values Location Multiple values Design Level All Status All Awarded All Execution Team All



PN#	Name	Location (short)	Program	Design Level (short)	Program Averages				Contract Performance / Quality						
					KPI 01 RBOD Adherence [Days]	Schedule Growth [%]	SPI	KPI 12 OTI	API	Cost Growth [%]	KPI 07 Closed RFIs Avg [Days]	KPI 07 Closed RFIs Max [Days]	KPI 08 Open RFIs Max [Days]	KPI 09 MODs	KPI 13 NCN
91983	VETERINARY FACILITY	MCB CP	MILCON	DBB	-144	0%	0.82	0.50	0.49	11%	24	84.33	358.7	5.39	0.11
P079	POTABLE WATER DISTRIBUTION IMPROVE...	MCB CP	MILCON	DBB	-415	63%	0.82	0.84	0.49	-2%	63	63	674	8	0
P1090	1 MEF CONSOLIDATED INFORMATION CENT...	MCB CP	MILCON	DBB	186	0%	0.82	0.82	0.49	70%	13	56	171	0	0
P1111	BASILONE ROAD REALIGNMENT	MCB CP	MILCON	DB	45	0%	0.82	0.82	0.49	0%				0	0
P1130	1ST MARDIV OPERATIONS COMPLEX	MCB CP	MILCON	DB	49	32%	0.82	1.02	0.93	29%				11	0
P1310	AMMUNITION SUPPLY POINT UPGRADE	MCB CP	MILCON	DBB	-1,019	164%	0.82	1.49	0.93	51%				15	0
P2000	62 AREA MESS HALL AND CONSOLIDATED...	MCB CP	MILCON	DB	-8	12%	0.82	1.44	0.93	6%	16	125	171	15	0
P220	COMBAT WATER SURVIVAL TRAINING FACI...	MCB CP	MILCON	DB	0	0%	0.82	0.79	0.12	0%	14	50	251	1	0
P2406U	G/ATOR FACILITIES 43 AREA, PHASE II	MCB CP	MILCON	DB	-164	42%	0.82	0.00	0.91	0%				1	0
P970	AMMUNITION SUPPLY POINT FACILITIES PU...	MCB CP	MILCON	DB	-1,032	219%	0.82	1.59	0.91	33%				23	0
P9906	AMBULATORY CARE CENTER REPLACEMENT	MCB CP	MILCON	DBB	-354	70%	0.82	1.07	0.91	13%	14	97	356	8	0
PA1405M	REPAIR AIR HANDLERS AND BOILERS IN HA...	MCB CP	M2R2	Null	0	0%	0.82	0.00	0.91	0%				0	0
PA2001M	PA2001M Repair and Reconfigure Aircraft S...	MCAS CP	M2R2	DB	-506	0%	0.82	0.00	0.91	1%	35	105	442	0	0
PA2002M	Repair Runway at MCAS CP	MCAS CP	M2R2	DBB	48	0%	0.82	0.00	0.91	0%				0	0
PE15118M	Repair BEQ Building 210705	MCB CP	M2R2	DB	413	0%	0.82	0.17	0.91	0%	22	56	330	1	0
PE17110M	PE17110M - Repair Mess Hall 210802	MCB CP	M2R2	DB	277	0%	0.82	0.43	0.91	29%	23	82	317	9	0

Issue Resolution & Partnering

Level	Government Team	Contractor	Risk
Flag	<ul style="list-style-type: none"> Commander, NAVFAC PAC Mission Owner Flag Officer Commanding Officer (CO), NAVFAC SW 	<ul style="list-style-type: none"> Chief Executive Officer President 	Extreme
Executive	<ul style="list-style-type: none"> CO, NAVFAC SW Executive Officer (XO), NAVFAC SW Mission Owner O-6/GS-15 Executives Chief Engineer, NAVFAC SW Chief of Contracting, NAVFAC SW 	<ul style="list-style-type: none"> CEO/President Vice President 	High to Extreme
Senior Leadership	<ul style="list-style-type: none"> Operations Officer (OPS), NAVFAC SW Deputy Operations Officer, NAVFAC SW Mission Owner O-5/GS-14+ Leaders Assistant Operations Officer, NAVFAC SW Program/Portfolio Manager, NAVFAC SW Design & Construction Supv. Contracting Officer, NAVFAC SW Design & Engineering Dir., NAVFAC SW Design Production Director, NAVFAC SW Public Works Officer 	<ul style="list-style-type: none"> Vice President Senior Project Manager Senior Design Manager 	Medium to High
Project Delivery	<ul style="list-style-type: none"> Facilities Engineering and Acquisition Division (FEAD) Director, NAVFAC SW Supervisory General Engineer, NAVFAC SW Supported Command/Mission Owner Site Representative Project Manager, NAVFAC SW Design Manager, NAVFAC SW Construction Manager, NAVFAC SW Contract Specialist, NAVFAC SW 	<ul style="list-style-type: none"> Site Project Manager Design Manager Quality Control Manager (QCM) Site Superintendent Asst. Superintendent(s) Site Safety and Health Officer (SSHO) 	Low to Medium

Tenets of Partnering

- Regular mid and executive level communication
- Alignment of common goals and objectives
- Collaboration on risk mitigation strategies
- Sharing of Key Performance Indicators (KPIs)
- Personal commitments
- Timely resolution of issues
- Quarterly Senior Executive Contractor Forum
- Joint Scoping
- Early Contractor Involvement (ECI)

Partnering Drives Successful Outcomes

Top 6 Things On My Mind

- **Secured Space...ICD 705 Requirements**
- **Infrastructure ISO Electrification...CA Goals...Electric Vehicle Charging Station...Micro-grids**
- **Real Estate...EUL...Leveraging Valuable Real Estate ISO Operational Mission Requirements**
- **Fire Suppression Systems...AFFF Replacement (F3) in Hangars**
- **Cost of Construction**
- **Othani...will he perform for the Dodgers**

Contact Info For Opportunities and Process

NAVFAC SW Contracting

Ms. Renae A. Kvendru

Chief of the Contracting Office

NAVFAC Southwest

renae.a.kvendru.civ@us.navy.mil

Ms. Jennifer Reece

Director, Design & Construction Contracting

NAVFAC Southwest

jennifer.m.reece.civ@us.navy.mil

NAVFAC Small Business

Ms. Jayme Nagao

Deputy Director, Office of Small Business Programs

NAVFAC Pacific

jayme.c.nagao.civ@us.navy.mil

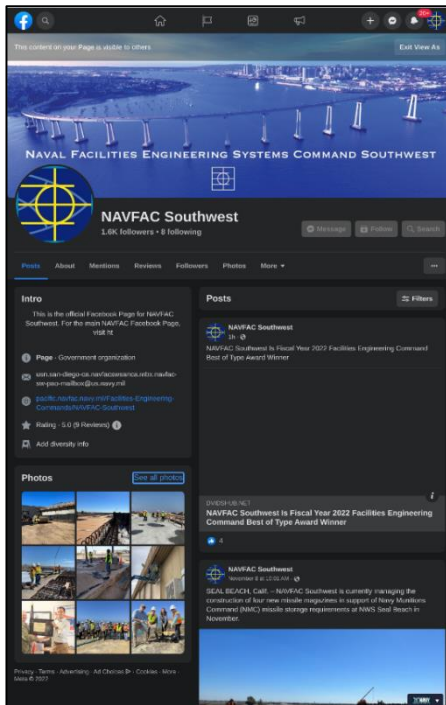
Mr. Anthony Phillips

Assistant Deputy for Small Business

NAVFAC Southwest

anthony.j.phillips14.civ@us.navy.mil

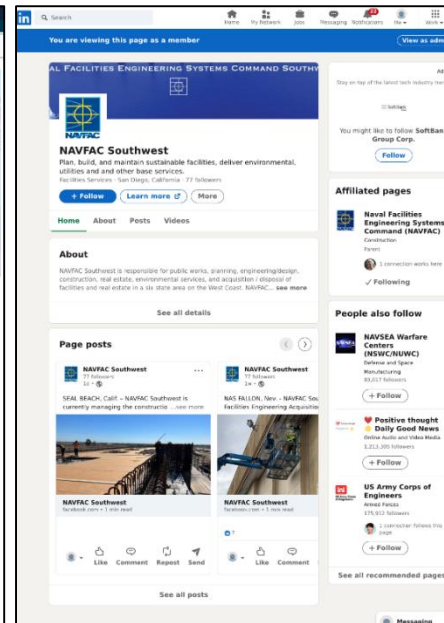
NAVFAC SW Public Affairs



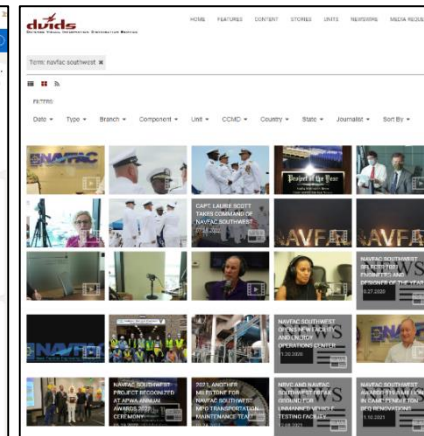
Facebook



Pacific.Navfac.Navy.mil



LinkedIn



DVIDSHUB.net



Public Affairs Officers: Mario Icarl (619) 909-8746 and Katie Cadiao (619) 887-3735
 Email: usn.san-diego-ca.navfacswsanca.mbx.navfac-sw-pao-mailbox@us.navy.mil

Useful Website Links

NAVFAC Southwest Public website:

<https://pacific.navfac.navy.mil/Facilities-Engineering-Commands/NAVFAC-Southwest/>

NAVFAC Small Business website:

<https://www.navfac.navy.mil/Business-Lines/Office-of-Small-Business-Programs/>

Federal agencies procurement forecasts:

<https://www.acquisition.gov/procurement-forecasts>

U.S Government Departments and Agencies:

<https://www.usa.gov/federal-agencies>



Questions?

