

U.S. ARMY CORPS OF ENGINEERS ROCK ISLAND DISTRICT

2024 SAME OMAHA POST INDUSTRY DAY

30 May 2024



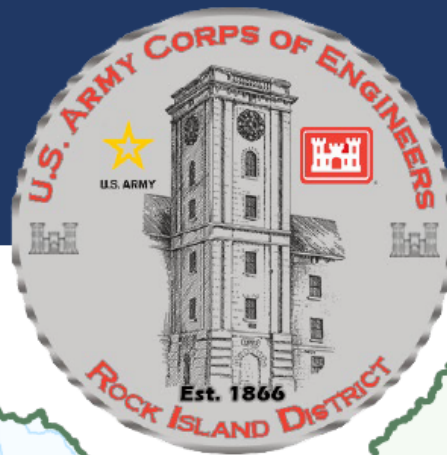
U.S. ARMY



US Army Corps
of Engineers®

Rock Island District

5 River Basins | 5 States | 900+ Professionals Serving Our Nation Since 1866



MISSION

Deliver vital engineering and water resources solutions in collaboration with our partners to secure our Nation, reduce disaster risk and enhance quality of life, providing value to the region and Nation.



Flood Risk Management

146 Levee Drainage Systems
 >900 Miles of Levees
 5 Reservoirs in Iowa and Illinois
 >\$17B Flood Damages Prevented



Regulatory

Lead Federal Regulatory Agency in Iowa and Illinois
 1,500 Permits Issued in FY22



Recreation

1850 Campsites
 97 Recreation Sites
 38 Boat Ramps
 10 Swimming Beaches
 5 Visitor Centers
 16.8 M Annual Visitation

Flood Fight Supplies Provided to the Nation

4.2 M Standard Sandbags
 6,000 Large (airlift) Sandbags
 >6 Miles HESCO Gabion Baskets
 >2 Miles Polyethylene Sheeting
 84 Portable Pumps



Emergency Management



Environmental Stewardship

Upper Mississippi River Restoration Projects

16 In Planning/Design
 7 Under Construction
 59 Completed to Date
 120,000 Acres Restored to Date
 \$55M Annual Budget

18 Lock & Dam Sites
 582 Miles of Navigation
 396M Tonnage Locked
 >\$1 B Annual Cost Benefit



Navigation

Commander & District Engineer
 Col. Jesse T. Curry

Deputy District Engineer / PPMD Chief
 Kimberly Thomas, P.E.

Deputy Commander
 Maj. Matthew Fletcher

Engineering & Construction
 Roger Perk, P.E.

Resource Management
 Celeste Iversen

Real Estate
 Paul St. Louis

Operations
 Thomas Heindl, P.E.

Regulatory
 Matt Zehr

Contracting
 Scott Harris

National Centers

Inland Navigation Design Center
 Lenna Hawkins, P.E.

National Flood Fight Materiel Center
 Sarah Jones



US Army Corps of Engineers
 Rock Island District



U.S. ARMY

ROCK ISLAND DISTRICT SMALL BUSINESS PROGRAM



Provides outreach and information to ensure small businesses have the maximum practicable opportunity to participate in Rock Island District acquisitions through contracts or subcontracts.



Examples of Outreach and Informational Events include:

- SAME Small Business Conferences*
- Roundtable Discussions*
- SAME Industry Days*
- District Industry Days*
- National Industry Meetings*



SB Programs/Goals	FY23 Goals	FY23 Actual Obligations	FY23 Actual %
Small Business	48%	\$172,621,008	68.28%
Small Disadvantaged Business	30%	\$89,573,508	35.43%
Woman Owned SB	12%	\$21,752,814	8.6%
HUBZone	14%	\$36,404,744	14.4%
Service-Disabled Veteran SB	5%	\$29,344,525	11.61%

Total FY23 Contracting Obligations = **\$252,812,831**

Forecasted FY24 Contracting Obligations = **\$300M**

Program website: <https://www.mvr.usace.army.mil/Business-With-Us/Small-Business/>



U.S. ARMY

FY24 FUNDING

4

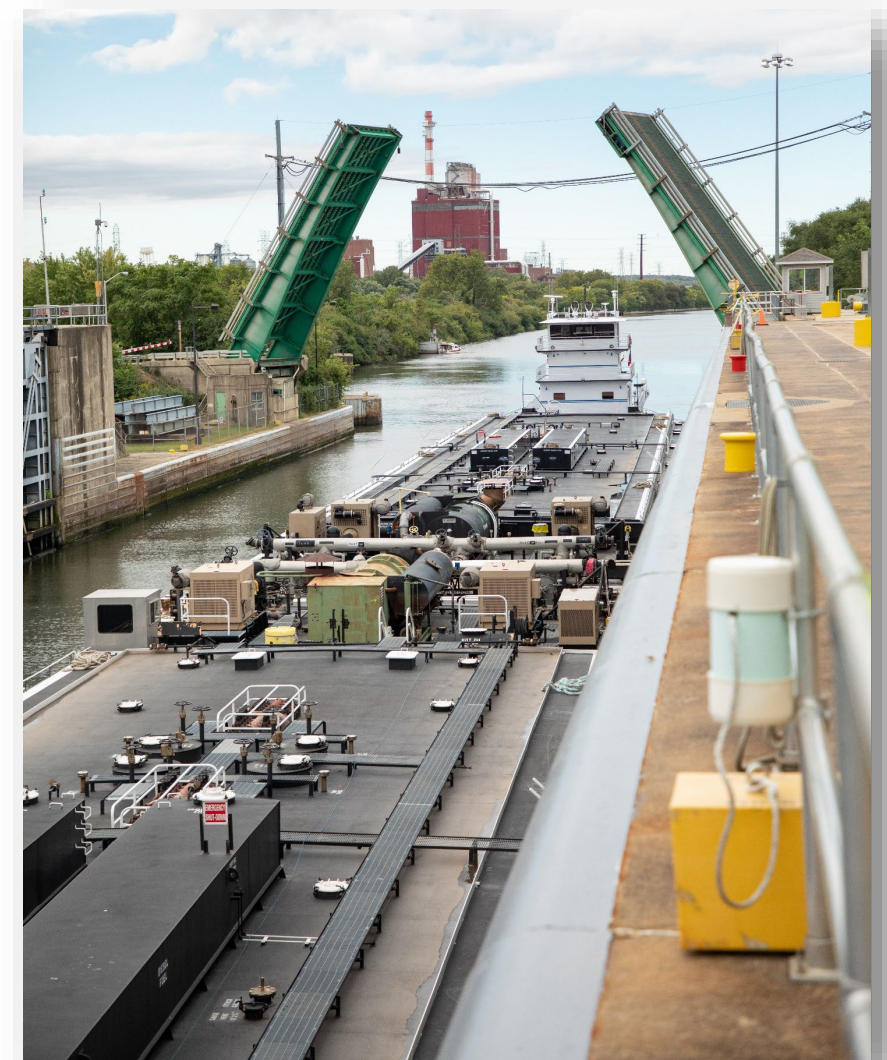


Rock Island District FY24 Appropriations - \$322.6M (Does not include FY24 Work Plan)

- **INVESTIGATIONS - \$1M**
 - UMR Flow Frequency Study - \$1M

- **CONSTRUCTION - \$175M**
 - UMRR - \$55M
 - NESP - \$120M

- **OPERATIONS & MAINTENANCE - \$146.6M**
 - Mississippi River - \$76.7M
 - Illinois Waterway - \$51.3M
 - Saylorville Lake - \$6.5M
 - Lake Red Rock - \$5.5M
 - Coralville Lake - \$5.0M
 - Farm Creek - \$0.6M
 - Rock Island Small Boat Harbor - \$1.0M





U.S. ARMY

ROCK ISLAND DISTRICT FUNDING TRENDS



Annual Appropriation	Investigations	Construction	O&M	Total
FY 16 Allocated	1,800,000	25,036,000	151,373,000	178,209,000
FY 17 Allocated	2,300,000	42,520,000	135,558,000	180,378,000
FY 18 Allocated	2,550,000	43,430,000	180,271,000	226,251,000
FY 19 Allocated	150,000	107,578,000	164,926,000	272,654,000
FY 20 Allocated	4,500,000	58,505,000	208,457,000	271,462,000
FY 21 Allocated	8,910,000	33,170,000	179,529,850	221,609,850
FY 22 Allocated	5,190,000	90,449,000	187,731,000	283,370,000
FY 23 Allocated	0	170,559,500	178,337,000	348,896,500
FY 24 Allocated	1,000,000	175,000,000	146,573,000	322,573,000
FY 25 PBUD	0	55,000,000	153,772,000	208,772,000

Note: Does not include FPMS, PAS, CAP, ICW, and Supplemental funds.



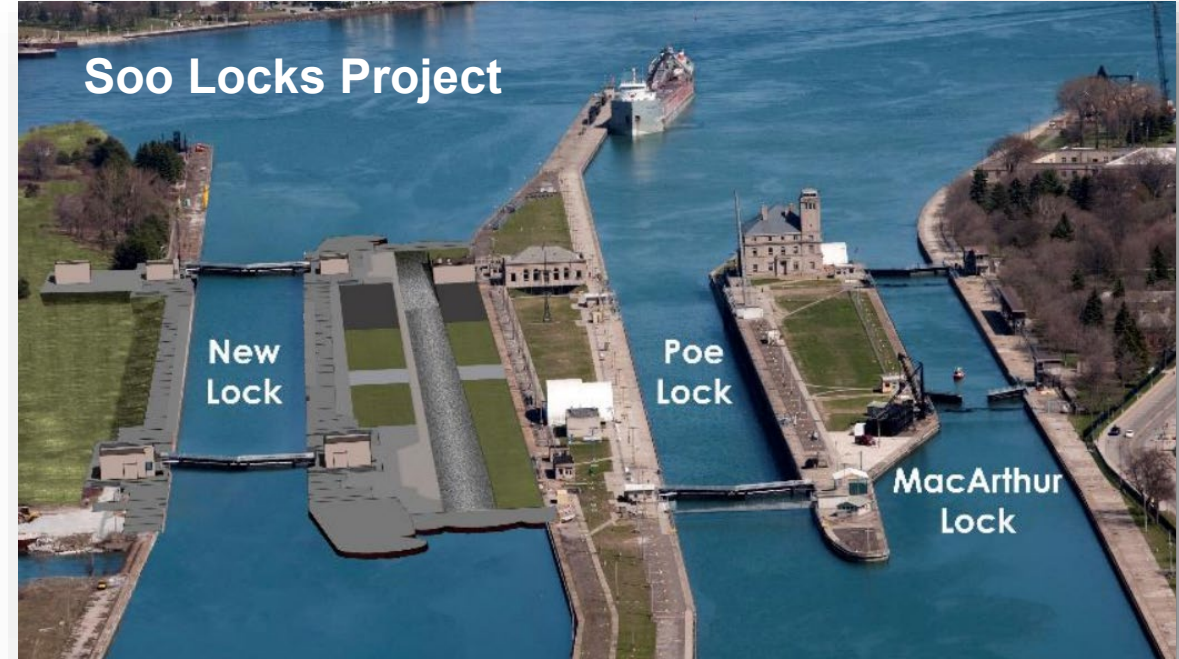
U.S. ARMY

INLAND NAVIGATION DESIGN CENTER (INDC)

6



The Inland Navigation Design Center (INDC) Mandatory Center of Expertise (headquartered in the Rock Island District) provides engineering, design, analysis, and review services for studies, new locks, new navigational dams, major rehabilitation of existing inland navigation locks and dams, and significant inland navigation lock and dam operations and maintenance projects, while promoting quality design and consistency in design and technical competency.



INDC is currently the designer of record for the:

- **Soo Locks**
- **Upper Ohio Locks**
- **Brandon Road Interbasin Project**
- **Brazos River Floodgates**
- **Lock 25 (NESP)**



U.S. ARMY

BRANDON ROAD INTERBASIN PROJECT



INCREMENT I-A

- Automated Barge Clearing Deterrent
- Leading Edge Bubble Deterrent
- Leading Edge Acoustic Deterrent Array
- Leading Edge Support Facilities
- Upstream Boat Launch

INCREMENT I-B

- Site Prep
- Channel Rock Excavation

INCREMENT II

- Electric Deterrent
- Large Acoustic Deterrent Array
- Support Facilities
- Engineered Channel floor & walls for the electric & large acoustic deterrents
- Flushing Lock
- Downstream Boat Launch

INCREMENT III

- Finish Engineered Channel
- Connect RDB Wall to Lower Guidewall



Project website: <https://www.mvr.usace.army.mil/Missions/Environmental-Stewardship/BR-Interbasin-Project/>

Project	Anticipated Contract Type	Anticipated Advertisement ¹	Estimated Range
Construction Increment I-A and I-B	Construction	4th Qtr FY24	\$100M-\$150M
Construction Increment II & III AE Design	AE Services	1st Qtr FY25	\$25M-\$75M
Flushing Lock Gate Fabrication	Construction	4 th Qtr FY25	\$75-\$125M
Construction Increment II	Construction	2 nd Qtr FY26	\$400M-\$600M
Construction Increment III	Construction	2 nd Qtr FY29	\$25M-\$50M

¹PROPOSED INCREMENTS SUBJECT TO CHANGE PENDING COMPLETION OF DESIGN & EXECUTION OF A PPA.



U.S. ARMY

BRANDON ROAD INTERBASIN PROJECT



Increment I-A and I-B Site Features



Project	Anticipated Contract Type	Anticipated Advertisement ¹	Estimated Range
Increment I-A and I-B Construction	Construction	4th Qtr FY24	\$100M-\$150M

¹PROPOSED INCREMENTS SUBJECT TO CHANGE PENDING COMPLETION OF DESIGN & EXECUTION OF A PPA.



U.S. ARMY



US Army Corps of Engineers

NAVIGATION AND ECOSYSTEM SUSTAINABILITY PROGRAM (NESP)

ST. PAUL DISTRICT- ROCK ISLAND DISTRICT - ST. LOUIS DISTRICT

NAVIGATION AND ECOSYSTEM PROJECTS

The Navigation and Ecosystem Sustainability Program (NESP) is a long-term, dual-purpose program that integrates navigation improvements and ecosystem restoration together to provide Upper Mississippi River System once in a generation-type positive impacts.

The primary goals of the program are to increase the capacity and improve the reliability of the inland navigation system while restoring, protecting, and enhancing the environment.

This map only shows projects actively being implemented. NESP includes an additional 5 - 1,200-foot locks, systemic mitigation, and hundreds of ecosystem restoration projects.

<p>CONSTRUCTION COMPLETE</p> <ul style="list-style-type: none"> 1 Pool 2 Wingdam Notching 	<p>CONSTRUCTION/AE DESIGN SERVICE CONTRACT AWARDS</p> <ul style="list-style-type: none"> 9 Andalusia Island Complex Planning 14 LaGrange New 1,200-Foot Lock Design
<p>ONGOING CONSTRUCTION</p> <ul style="list-style-type: none"> 2 Pool 4 Island System Mitigation 8 Lock 14 Mooring Cell 10 Starved Rock Breakwater 16 Moore's Towhead System Mitigation 19 Alton Pools Islands - Island Protection 20 Twin Island Protection and Enhancement 24 Lock 25 New 1200-Foot Lock 	<p>ONGOING DESIGN</p> <ul style="list-style-type: none"> 17 Lock and Dam 22 Fish Passage Mooring Facilities

ONGOING PROJECT PLANNING

<ul style="list-style-type: none"> 3 Wacouta Bay 4 Johnson Island 6 Sny Magill, Effigy Mounds National Monument 7 Sabula Lakes 12 Liverpool Flowing Side Channel 13 Lee County Islands and Backwaters 18 Pool 24 Island Restoration - Denmark and Drift Islands Complex 	<ul style="list-style-type: none"> 21 Clarksville/Carroll Island Side Channel 22 Hausgen Island Side Channel 25 MMR - NWR - Horse Island 26 Middle Mississippi River Stone Dike Alterations Phase 1
--	---

Water Level Management - Reduce Water Level Fluctuations

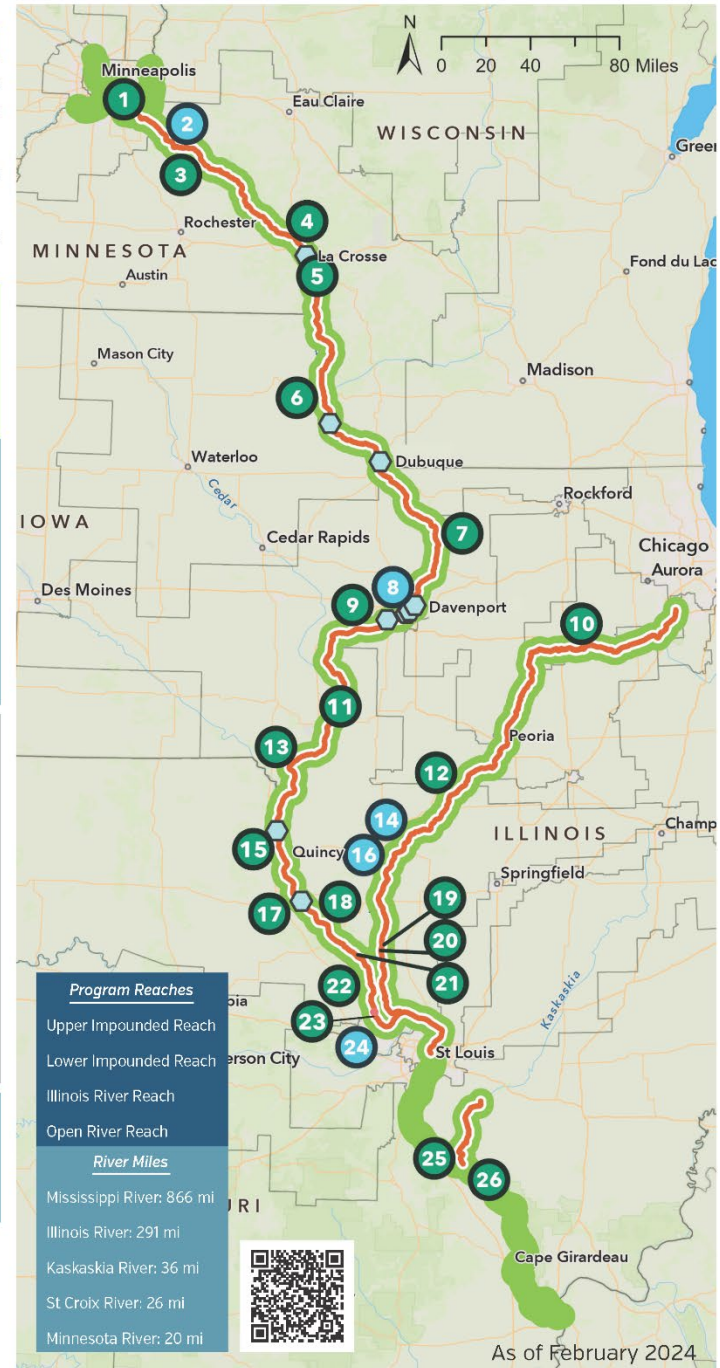
SYSTEMIC FOREST MANAGEMENT

<ul style="list-style-type: none"> 5 Pool 8 Goose Island Invasive Control 11 Pools 17 and 18 Forest Inventory 	<ul style="list-style-type: none"> 15 Pool 21 Long Island Forest Inventory 23 Pool 26 Cuivre Island Tree Planting
---	---

NESP PARTNERS



<https://www.mvr.usace.army.mil/Rock-Island-District/Programs/NESP/>





U.S. ARMY

NESP UPCOMING SOLICITATIONS



Project	Location	USACE District	Anticipated Advertisement	Estimated Range
Lock 25 Maintenance Building Design-Build	Winfield, MO	St. Louis District	3rd Quarter FY24	\$5-10M
Lock 25 A/E Task Orders for Design Support, VE, and CADD Tech Support	Winfield, MO	St. Louis District	4th Quarter FY24	\$5-10M
LaGrange New 1200' Lock – Machinery Fabrication Contract	LaGrange, IL	Rock Island District	4th Quarter FY24	Greater than \$25
Mooring Facilities Construction Contract	8 locations	Rock Island and St. Paul District	4th Quarter FY24	Greater than \$25M
Lock and Dam 22 Fish Passage Construction Contract	Saverton, MO	Rock Island District	3rd Quarter FY24	Greater than \$25M
Forest Management – Timber Stand Improvement Contract Actions	Various	St. Louis District Rock Island District St. Paul District	4th Quarter FY24	\$1-5M
Pool 19 Ecosystem Pool Planning	Pool 19 Upper Mississippi River	Rock Island District	4th Quarter FY24	\$1-5M
Project Data Collection	Various	St. Louis District Rock Island District St. Paul District	4th Quarter FY24	\$1-5M
Project Implementation Report Task Orders	Various	Rock Island District	4th Quarter FY24	\$1-5M
Tribal Engagement Strategy Development	Various	Tribal Nations Technical Center of Expertise - Albuquerque District	4th Quarter FY24	Less than \$1M
Survey Systemic Control - Task Order	Lock and Dam 17 & 19	Photogrammetric Mapping Center of Expertise - St. Louis District	3rd Quarter FY24	Less than \$1M



U.S. ARMY



US Army Corps of Engineers

NAVIGATION AND ECOSYSTEM SUSTAINABILITY PROGRAM (NESP)

ST. PAUL DISTRICT- ROCK ISLAND DISTRICT - ST. LOUIS DISTRICT

LOCK AND DAM 25 NEW 1,200-FOOT LOCK

As of 28-Mar-24

PROJECT SUMMARY

Lock and Dam 25 is located in Calhoun County, Illinois, and Lincoln County, Missouri, at approximately river mile 241.4 on the Upper Mississippi River above the mouth of the Ohio River near Winfield, Missouri. The project will be delivered via Integrated Design and Construction (IDaC) a delivery method that integrates construction contractor input through the design development.

The primary purpose of the Lock and Dam 25 New 1,200-Foot Lock Project is to improve efficiency, reliability, and safety for navigation traffic transiting the facility along with operational redundancy at Lock 25.

The project will reduce the per lockage times from 2.5 hours or more to approximately 45 minutes. The addition of a 1,200-foot lock will accommodate the largest tow configurations on the Upper Mississippi River. This will improve mariner safety, with professional mariners no longer having to “split” tows to transit the lock chamber.

OBJECTIVES

-  Safely deliver a quality 1,200-foot lock efficiently and cost effectively
-  The goal is to construct the project while minimizing impacts and maintaining predictability to existing navigation traffic
-  Navigation stakeholders will be integrated throughout the design and construction



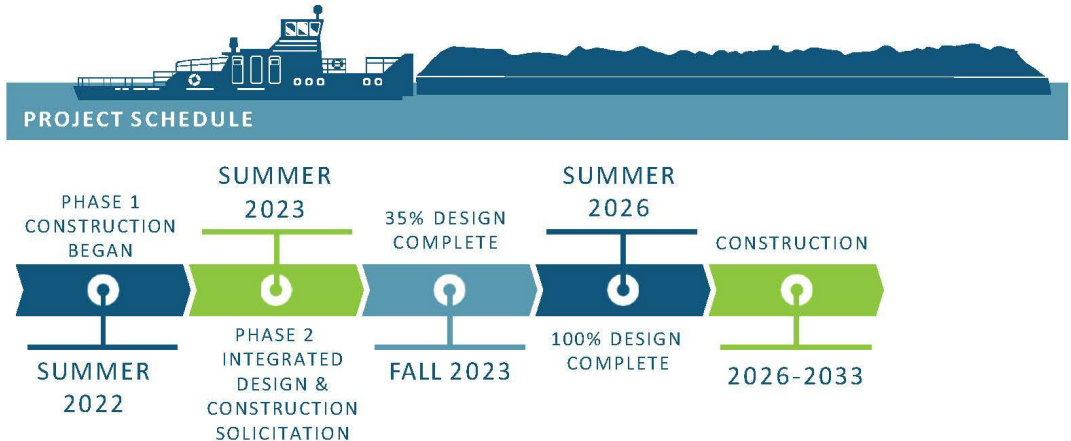
DESIGN OVERVIEW

- Re-initiated – Oct 2022
- 15% level of maturity
- 35% Review phase began – Jun 2023
- 35% Design complete – Nov 2023
- 100% Design complete – Jun 2026

CONSTRUCTION OVERVIEW

- Phase 1 – Lockwall modifications
 - Construction complete
- Phase 2 – Bulkhead Supply
 - Awarded

ESTIMATED COST >\$20M





U.S. ARMY



US Army Corps of Engineers

NAVIGATION AND ECOSYSTEM SUSTAINABILITY PROGRAM (NESP)

ST. PAUL DISTRICT- ROCK ISLAND DISTRICT - ST. LOUIS DISTRICT

As of 28-Mar-24



LAGRANGE NEW 1,200-FOOT LOCK

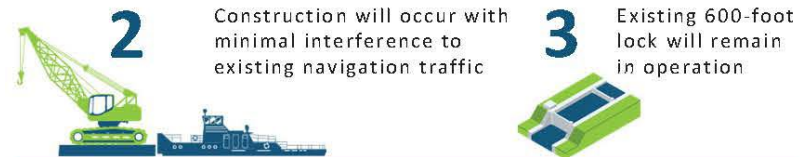
PROJECT SUMMARY

LaGrange Lock and Dam is 80.2 miles above the confluence of the Illinois River with the Mississippi River at Grafton, Illinois, 7.8 miles below Beardstown, Illinois.

The primary purpose of the LaGrange New 1,200-Foot Lock Project is to improve efficiency, reliability, and safety for navigation traffic transiting the facility along with additional operational redundancy at LaGrange.

The project will reduce the per lockage times from 2.5 hours or more to approximately 45 minutes. The addition of a 1,200-foot lock will accommodate the largest tow configurations on the Upper Mississippi River. This will improve mariner safety, with professional mariners no longer having to "split" tows to transit the lock chamber.

OBJECTIVES



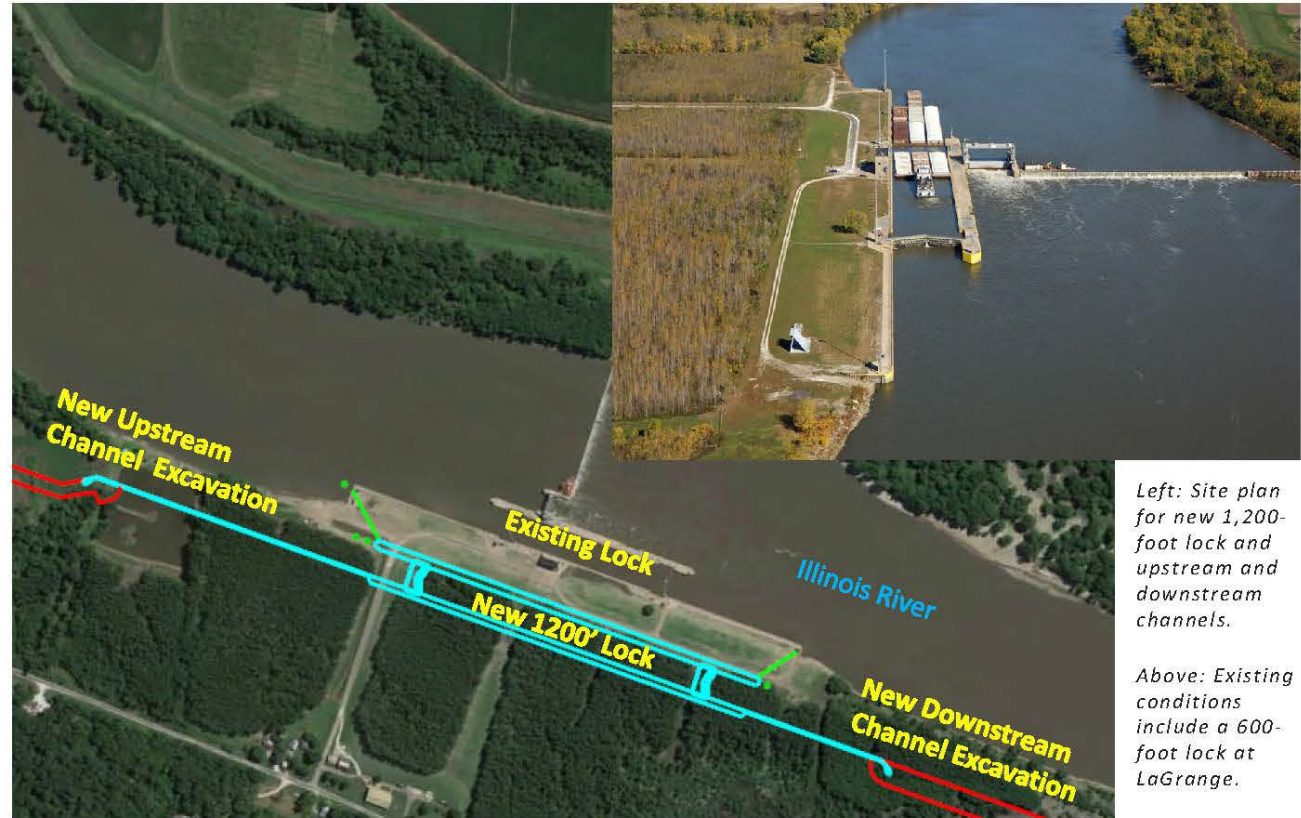
ONGOING ACTIVITIES

FY23 Activities

- 100% design task order awarded
- Real estate coordination
- Industry coordination – navigation and construction
- Physical model testing
- Continued design of new 1,200-foot lock

FY24 Activities

- Construction contract award for machinery fabrication
- Advancement to 35% project design
- Physical model completion



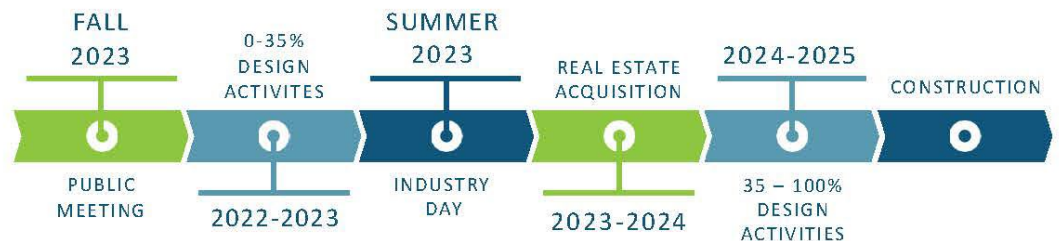
Left: Site plan for new 1,200-foot lock and upstream and downstream channels.

Above: Existing conditions include a 600-foot lock at LaGrange.

ESTIMATED COST > \$20M



PROJECT SCHEDULE



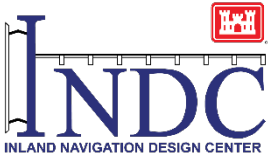


U.S. ARMY

LAGRANGE NEW 1200' LOCK



		CY	2025		2026		2027		2028		2029		2030	
		FY	2025		2026		2027		2028		2029		2030	
Contract	Duration	Cost												
Contract 1 - Procurement of Gates & Operating Machinery (Not Shown)	803 days	\$25M - \$100M	█	█	█	█	█	█	█	█				
Contract 2 - Site Development & Utilities	150 days	\$25M - \$100M		█	█									
Contract 3 - Lock Excavation, Cofferdam & Foundations	458 days	\$250M - \$500M			█	█	█	█						
Contract 4 - Guidewalls, Lock & Supporting Facilities	898 days	\$250M - \$500M				█	█	█	█	█	█	█	█	█
Contract 5 - Approach Channel & Marine Features	414 days	\$250M - \$500M									█	█	█	█





U.S. ARMY



US Army Corps of Engineers

NAVIGATION AND ECOSYSTEM SUSTAINABILITY PROGRAM (NESP)

ST. PAUL DISTRICT- ROCK ISLAND DISTRICT - ST. LOUIS DISTRICT

As of 28-Mar-24



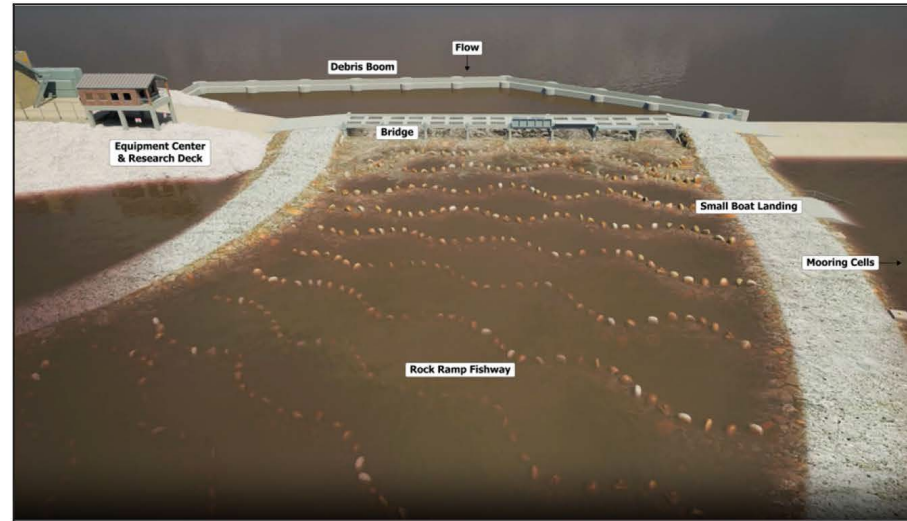
LOCK AND DAM 22 FISH PASSAGE

PROJECT SUMMARY

Lock and Dam 22 is located near Saverton, Missouri, on the Mississippi River, roughly 10 miles south of Hannibal, Missouri, at river mile 301.2. The fish passage structure will be constructed on the spillway portion of the dam, on the side furthest from the Illinois shoreline, and would extend downstream into the tailwater area.

The primary purpose of the Lock and Dam 22 Fish Passage Project is to increase fish access to upstream mainstream river and tributary habitats. Increased access to upriver habitat should result in an increase in the size and distribution of native migratory fish populations.

The secondary purpose is to monitor and adaptively manage this structure to optimize its effectiveness and inform design of subsequent fish passage projects.



DESIGN

- HQSACE approved Final PIR June 2022
- Implementation Review Plan
- Final design received

CONSTRUCTION

- Base bid plus options contract structure

ADAPTIVE MANAGEMENT

- Pre-Construction Monitoring
- Construction Monitoring
- Post-Construction Monitoring
- Adaptive Management

MIGRATORY FISH SPECIES OF THE UPPER MISSISSIPPI RIVER

	American eel		Alabama shad
	spotted sucker		flathead catfish
	silver lamprey		skipjack herring
	shorthead redhorse		white bass
	lake sturgeon		gizzard shad
	black redhorse		yellow bass
	pallid sturgeon		threadfin shad
	golden redhorse		northern pike
	longnose gar		blue sucker
	silver redhorse		smallmouth bass
	shovelnose sturgeon		smallmouth buffalo
	northern hog sucker		largemouth bass
	goldeye		bigmouth buffalo
	white sucker		sauger
	mooneye		quillback
	channel catfish		walleye
	paddle fish		highfin carpsucker
	blue catfish		freshwater drum

BI-PARTISAN INFRASTRUCTURE LAW (BIL) FUNDS: \$97,100,000, FY24 Congressionally Directed Spending: \$25.5M

OBJECTIVES

- Provide habitat benefits for over 30 fish species
- Restore natural connection between pools
- Increase migration capabilities for native fish species
- Provide spawning habitat for fish

Project Deliverables & Tasks:

- Mar 2024 – 100% Design Completion
- Jun 2024 – Construction Solicitation
- Sep 2024 – Construction Award
- Sep 2027 – Construction Complete

Monitoring Activities

- FY22-24 – Pre-Construction Monitoring
- FY25-27 – Construction Monitoring
- FY28-32 – Post-Construction Monitoring
- FY28-32 – Adaptive Management

Lock and Dam 22 Fish Passage Monitoring

- Inform Project Design and Construction
- Monitor Fish Movement through Lock 22 and Fishway
- Monitor Systemic Ecological Response by Migratory Fishes
- Monitor Physical Performance of the Fish Passage Improvement Features
- Monitor Effects of the Project on Structural Integrity, Navigation Operations, Water Quality

ESTIMATED COST >\$20M

PROJECT SCHEDULE

FEASIBILITY APPROVAL	START DESIGN AND PRE-CONSTRUCTION MONITORING	100% DESIGN COMPLETION	CONSTRUCTION SOLICITATION AND AWARD	CONSTRUCTION AND MONITORING	POST-CONSTRUCTION MONITORING AND ADAPTIVE MANAGEMENT
SUMMER 2022	SPRING 2022	WINTER 2023/2024	SPRING-FALL 2024	2025-2027	2027-2032

<https://www.mvr.usace.army.mil/Rock-Island-District/Programs/NESP/Ecosystem-Restoration/>

PROGRAM PARTNERS



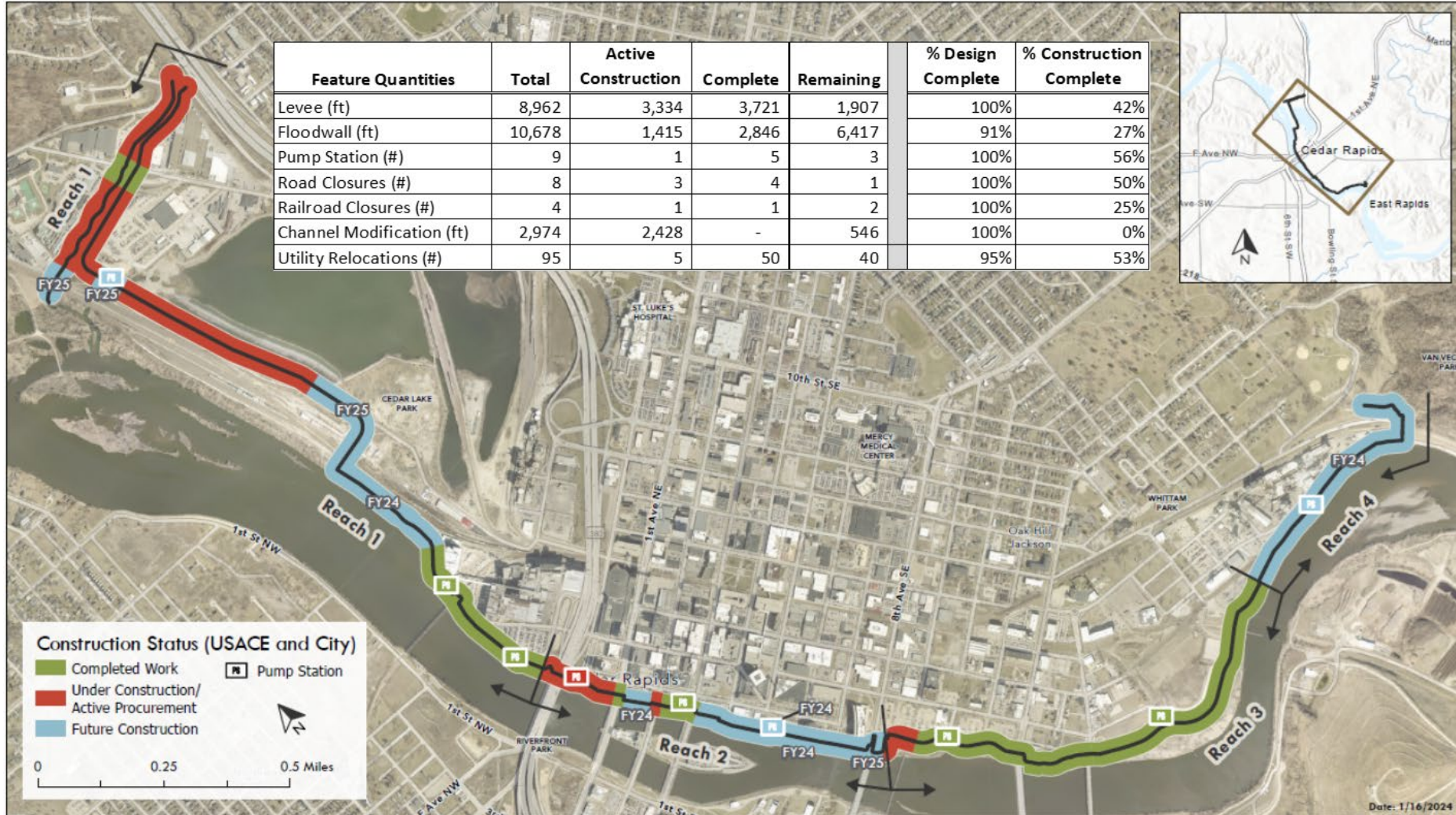
U.S. ARMY

CEDAR RAPIDS, IOWA FLOOD RISK MANAGEMENT PROJECT



US Army Corps
of Engineers
Rock Island District

CEDAR RAPIDS FLOOD RISK MANAGEMENT EAST SIDE CONSTRUCTION STATUS



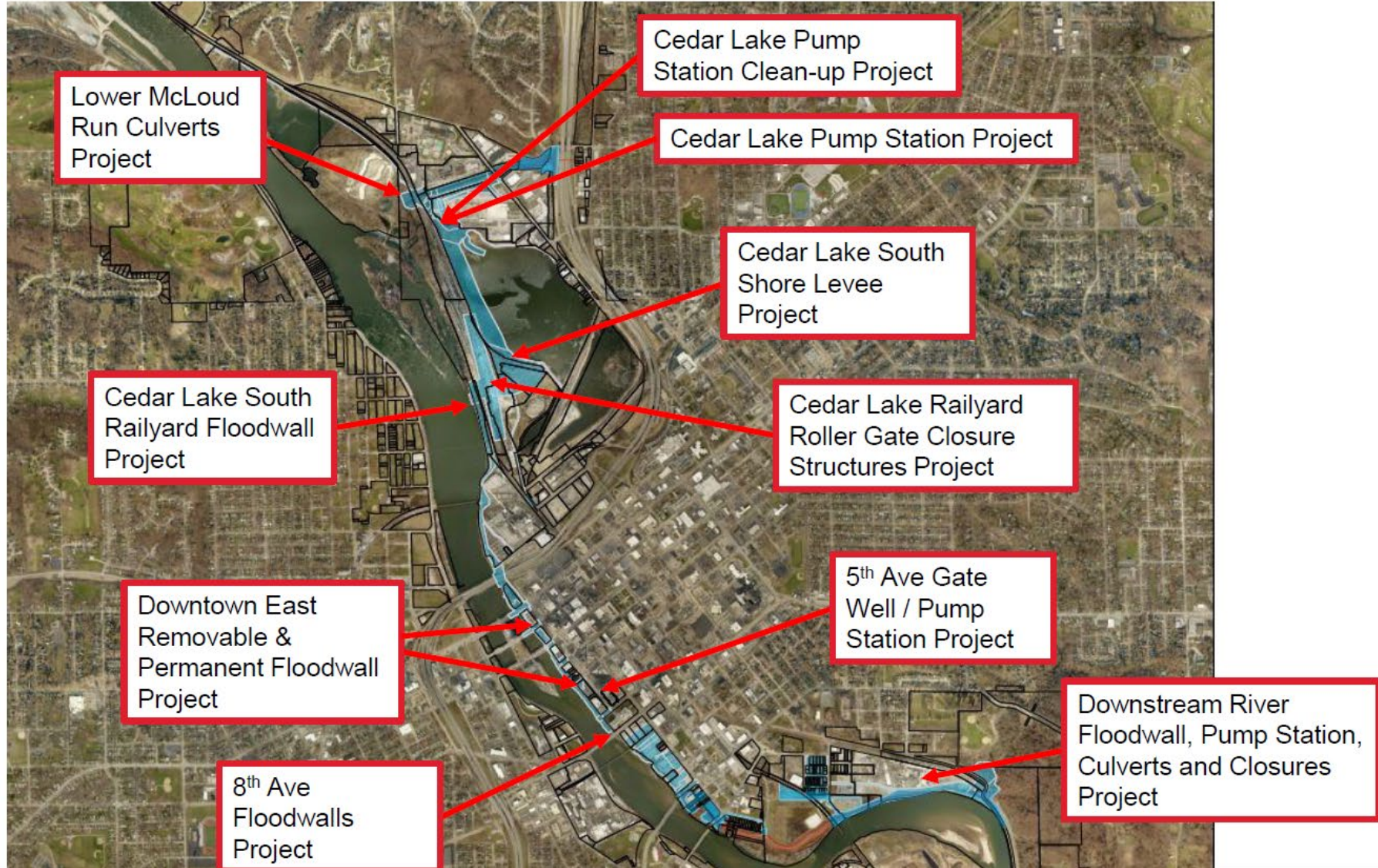


U.S. ARMY

CEDAR RAPIDS, IOWA

FLOOD RISK MANAGEMENT PROJECT

MAP OF REMAINING PROJECTS





U.S. ARMY

CEDAR RAPIDS, IOWA FLOOD RISK MANAGEMENT PROJECT



Project	Project Location	Anticipated Advertisement	Estimated Range
5th Ave SE Gatewell (CITY)	Downtown	Spring 2024	\$1M-\$5M
Downtown East Removable & Permanent Floodwall (USACE)	Downtown	Summer 2024	\$25M-\$50M
Cedar Lake South Railyard Floodwall (USACE)	Cedar Lake	Fall 2024	\$10M-\$25M
Downstream River Floodwall, Pump Station, Culverts and Closures (USACE)	South Industrial	Fall 2024	\$50M-\$100M
Cedar Lake Railyard Roller Gate Closure Structures (USACE)	Cedar Lake	Winter 2024/2025	\$10M-\$25M
Cedar Lake South Shore Levee (CITY)	Cedar Lake	Winter 2024/2025	\$5M-\$10M
Cedar Lake Pump Station Environmental Remediation (CITY)	Cedar Lake	Summer 2024	\$1M-\$5M
Cedar Lake Pump Station (CITY)	Cedar Lake	Spring 2025	\$10M-\$25M
McCloud Run Lower Reach Culverts (USACE)	McCloud Run Channel	Spring 2025	\$5M-\$10M
8th Ave SE Floodwalls (USACE)	Downtown	Summer 2025	\$1M-\$5M

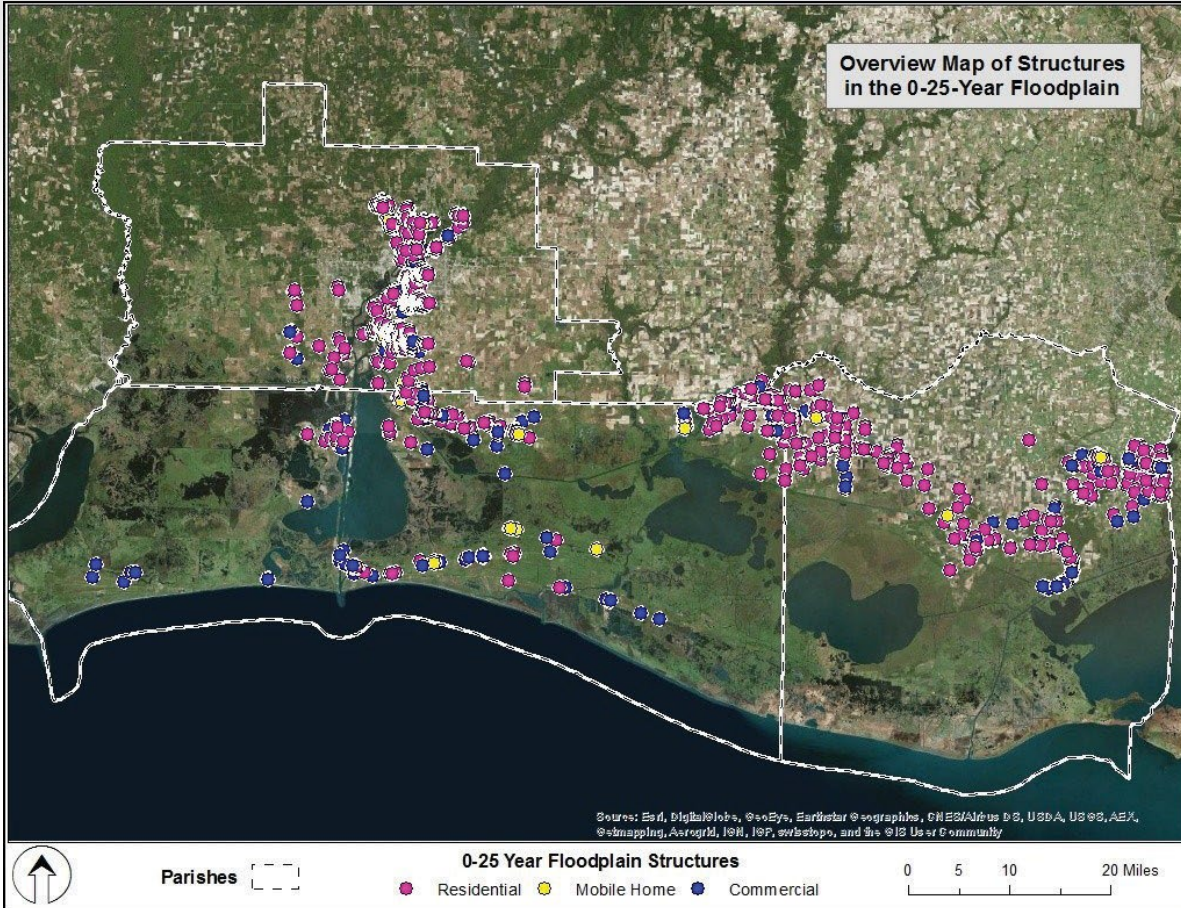


U.S. ARMY

SOUTHWEST COASTAL, LOUISIANA PROJECT OVERVIEW



Project Purpose



Location: Cameron, Calcasieu, and Vermilion Parishes

3,462 RESIDENTIAL STRUCTURES ELIGIBLE TO BE RAISED	342 DRY FLOOD-PROOFING	157 Localized Risk Reduction
---	-------------------------------	-------------------------------------

The Project includes structures at or below the 2025- 25-year base flood elevation (BFE).

The Project recommends 3,462 residential structures will be considered for elevation equivalent to the 2075 100-year BFE. Qualifying residential structures will be raised approximately 5 feet on average, but no higher than 13 feet.

342 non-residential structures will be considered for dry flood-proofing to 3 feet above ground.

Localized risk reduction measures (constructing berms) for 157 warehouses will be considered less than or equal to 6 feet above the ground.

NEXT STEPS

- First Design Build Contract (Pilot) is out for solicitation.
- A&E Screening SATOC is out for solicitation.
- Future Design Build Contract is being prepared.
- Critical landowner outreach is ongoing.



U.S. ARMY

UPPER MISSISSIPPI RIVER RESTORATION (UMRR)

19



Design/Construction Underway

- Steamboat Island
- Beaver Island
- Keithsburg Division
- Lower Pool 13

Feasibility Underway

- Green Island
- Pool 12 Forestry
- Quincy Bay
- Lower Pool 13 Phase II
- Pool 18 Forestry
- Lower Pool 11



Program website:

<https://www.mvr.usace.army.mil/Missions/Environmental-Stewardship/Upper-Mississippi-River-Restoration/>



U.S. ARMY

OPERATIONS & MAINTENANCE – MISSISSIPPI RIVER

20



Mississippi River Project

- Kevel Rail Replacement
- Lock Guidewall Work
- Dam Valve fabrication
- Dam Gate Fabrication
- Dredging





U.S. ARMY

OPERATIONS & MAINTENANCE – ILLINOIS WATERWAY

21



Illinois Waterway Project

- Electrical & Controls Work
- Generator & Compressor Work
- Bulkhead fabrication
- Sheet pile installation
- Dredging





U.S. ARMY

NAVIGATION & STRUCTURAL



Project	Location	Anticipated Advertisement	Estimated Range
Marseilles Electrical System	Marseilles, IL	3 rd Qtr FY24	\$10M-\$25M
LD 16, 18, & 20 Kevel Rail Replacement	Multiple	4 th Qtr FY24	\$1M-\$5M
LD21 Phase 2 Concrete Repairs	Quincy, IL	4 th Qtr FY24	\$1M-\$5M
LD11 Upstream Mooring Cell	Dubuque, IA	4 th Qtr FY24	\$1M-\$5M
LD14 Upstream (x2) and LD 15 Downstream Mooring Cells	Multiple (QCA)	4 th Qtr FY24	\$5M-\$10M
LD20 Downstream and LD22 Upstream Mooring Cells	Multiple	4 th Qtr FY24	\$5M-10M



U.S. ARMY

CIVIL, CHANNEL & ECOSYSTEM RESTORATION



Project	Location	Anticipated Advertisement	Estimated Range
UMRR Steamboat Island Stage 2 HREP	Clinton, IA	1st Qtr FY24	\$1M-\$5M



U.S. ARMY

OPERATIONS & MAINTENANCE – FLOOD RISK MANAGEMENT LAKES



Saylorville Lake

- Paving Work
- Water infrastructure Updates



Lake Red Rock

- Paving Work



Coralville Lake

- Shoreline Erosion Repairs
- Paving Work
- Restrooms & Shower Building Upgrades & Replacements
- Ranger & Admin Building Renovations



U.S. ARMY



RESERVOIRS



Project	Location	Anticipated Advertisement	Estimated Range
DB – Coralville Lake Ranger and Admin BLDG	Coralville, IA	2nd Qtr FY24	\$1M-\$5M



U.S. ARMY

PL 84-99 2023 REHABILITATION STATUS



Design Phase: 7

Solicitation/Contract Negotiation: 1

Contract Award/In Construction: 1

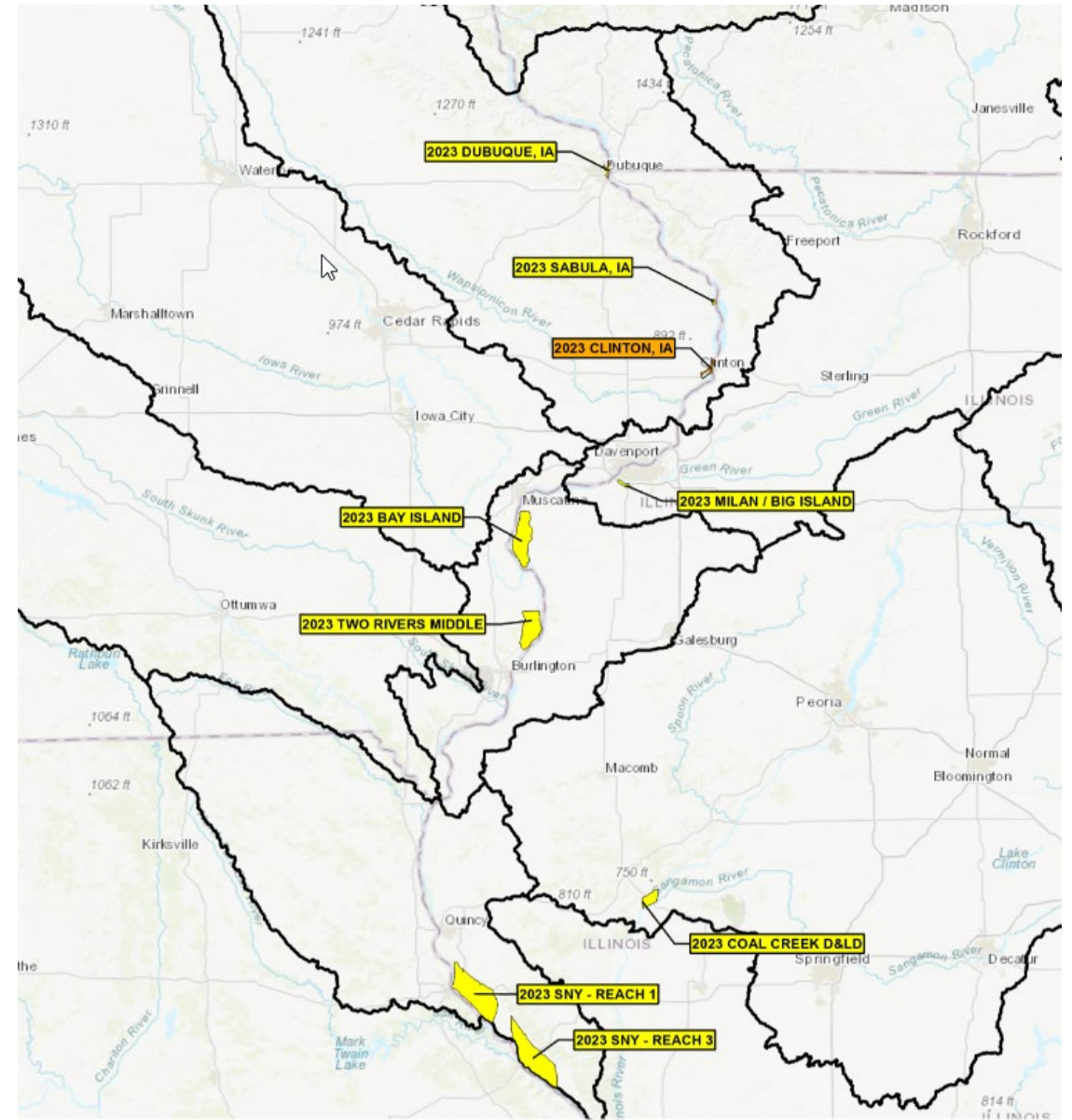
Complete: 0

Total Projects: 9



Program website:

<https://www.mvr.usace.army.mil/Missions/Flood-Risk-Management/Levee-Safety-Program/Public-Law-84-99-Program/>





U.S. ARMY

FLOOD RISK MANAGEMENT



Project	Location	Anticipated Advertisement	Estimated Range
Sabula PL84-99	Sabula, IA	2 nd Qtr FY24	\$500K-\$1M
Sny Island LDD 3 PL84-99	Hull, IL	3 rd Qtr FY24	\$500K-\$1M
Milan/Big Island PL84-99	Milan, IL	3 rd Qtr FY24	\$1M-\$5M
Coal Creek D&LD PL84-99	Beardstown, IL	3 rd Qtr FY24	\$1M-\$5M
Two Rivers L&DD PL84-99	Des Moines County, IA	3 rd Qtr FY24	\$1M-\$5M
Dubuque PL84-99	Dubuque, IA	3 rd Qtr FY24	\$500K-\$1M
Bay Island PL84-99	Mercer County, IL	4 th Qtr FY24	>\$10M
Sny Island LDD 1 PL84-99	Hull, IL	4 th Qtr FY24	\$500K-\$1M
Dubuque Forced Sewer Main CAP Sec 14	Dubuque, IA	4 th Qtr FY24	\$1M-\$5M



U.S. ARMY

BUILDING RENOVATIONS – 88TH RD & OTHERS



Project	Location	Anticipated Advertisement	Estimated Range
88th RD - Repair HVAC and Electrical Systems, Building 510	Ft. Snelling, MN	3rd Qtr FY24	\$1M-\$5M
88th RD - Repair HVAC & Electrical Systems, AMSA/OMS Building	Whitehall, OH	3rd Qtr FY24	\$1M-\$5M
88th RD - Repair and Replace Elevators, Building 203	Arlington Heights, IL	2nd Qtr FY24	\$500K-\$1M
88th RD - Repair HVAC and Electrical Systems, USARC Building	Livonia, MI	3rd Qtr FY24	\$1M-\$5M
88th RD - Repair Foundation and Building Repairs	Twinsburg, OH	3rd Qtr FY24	\$1M-\$5M
88th RD - Building 317 LED Lighting Upgrade	Milwaukee, WI	4th Qtr FY24	\$100K-\$500K
Clock Tower Third Floor Renovations	Rock Island, IL	1st Qtr FY24	\$1M-\$5M
DB - Coralville Ranger and Admin Bldg	Coralville, IA	2d Qtr FY24	\$500K-\$1M



U.S. ARMY

UPCOMING A-E SERVICES IDIQ MATOCS

29



- **\$49 Million IDIQ MATOC**
 - Restricted to Small Business
 - Minimum of 3 contracts to be awarded
 - SF330s were due December 2023
 - Award Q3-FY24
- **\$200 Million IDIQ MATOC**
 - Unrestricted
 - Minimum of 3 contracts to be awarded
 - SF330s were due January 2024
 - Award Q4-FY24





U.S. ARMY

UPCOMING AE SERVICES IDIQ MATOC: TECHNICAL REQUIREMENTS

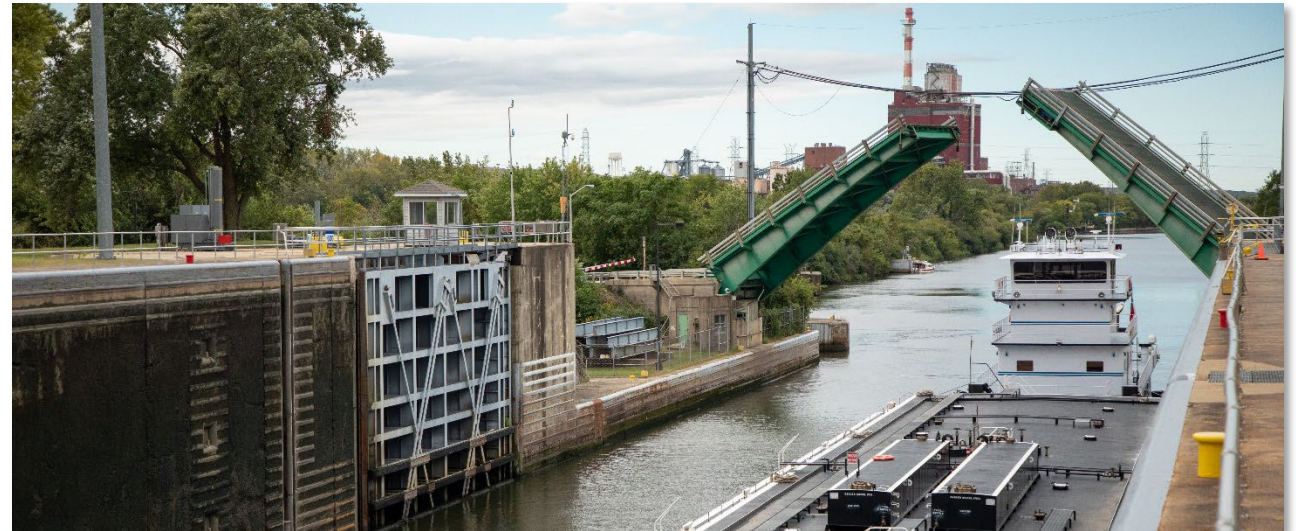
30



Location of Projects: The services will be performed primarily in connection with projects located within the St. Paul, Rock Island, and St. Louis District's geographic boundaries (all or portions of MN, ND, SD, WI, IL, MO and IA). However, individual task orders may be for work anywhere within the Continental United States (CONUS).

Primary Disciplines: structural, civil, geotechnical, geology, hydraulic, hydrologic, mechanical, electrical, specifications, and cost engineering

Other Disciplines: architecture, landscape architecture, construction engineering, surveying, environmental engineering, and cartography





U.S. ARMY

UPCOMING EVENTS



31

19-21 February 2024

Memphis Industry Day/MVD Regional Industry Day

27 February 2024

NESP Virtual Industry Day

29 February 2024

St. Louis District Small Business Industry Day

27 March 2024

New Orleans District Small Business Industry Day

2-3 April 2024

SAME Rock Island Post Small Business Industry Day

17-18 April 2024

SAME SMPS/St. Louis Industry Day

25 April 2024

Vicksburg District Small Business Industry Day

21-22 May 2024

NDIA 15th Annual Midwest Government Contracting Symposium

29-31 May 2024

Omaha Industry Day

12-13 June 2024

GKC SAME Post Industry Day

20-22 November 2024

SAME 2024 Federal Small Business Conference (SBC)



U.S. ARMY

DOING BUSINESS WITH US



Websites for Industry Partners:

www.mvr.usace.army.mil/Business-With-Us/Small-Business/

www.mvr.usace.army.mil/Business-With-Us/Contracting/

- Upcoming training for industry or outreach events
- Contract Forecast Lists
- How-To's for Finding Opportunities
- Subcontracting Opportunities

Individualized Meetings Available to Discuss:

- Projects/programs and doing business with the District
- Potential connection with other District personnel and/or other resource partners
- Inclusion on District email list for ongoing communication

The screenshot shows the 'Small Business Program' page on the US Army Corps of Engineers Rock Island District Website. The page includes a navigation menu, a search bar, and a main content area with text about the program and a table of the 'FY24 Rock Island District Forecast'.

Small Business Program

The Rock Island District Small Business Program ensures that small businesses have the maximum practicable opportunity to participate in Rock Island District acquisitions through contracts or subcontracts. The District's program provides outreach to inform small businesses on how to do business with us.

The Program also provides advice and assistance to the Rock Island District workforce on all aspects of the Small Business Program. The involvement of small business concerns in our military and civil works programs is vital to the mission of the Army and to the nation's economic prosperity. Rock Island District is committed to developing small business concerns, providing procurement opportunities, training and counseling businesses for success, and establishing a broad base of capable suppliers to support the Army's mission.

FY24 Rock Island District Forecast

Project Title and Description	Anticipated Dollar Value	NAICS/PSC	Anticipated Set-Aside Decision	Action/Award	Anticipated Solicitation Date	Anticipated Award Date
Clock Tower 3rd Floor Remodel	\$1M-\$5M	237990	Facilities MATOC	Task Order	Q1FY24	Q1FY24
OD-C Ranger and Admin BLDG	\$5M-\$10M	236220	Small Business Set Aside Design Build	Standalone	Q1FY24	Q1FY24
Coal Creek D&LD- Erosion Repair	\$1M-\$5M	237990	SDVOSB IFB	Standalone	Q1FY24	Q2FY24
Sabula, IA - Erosion Repair	\$250K-\$500K	237990	WOSB IFB	Standalone	Q1FY24	Q2FY24
Clinton, IA - Erosion Repair	\$1M-\$5M	237990	Small Business IFB	Standalone	Q1FY24	Q2FY24
Sny Island L&DD Reach 3 - Erosion Repair	\$1M-\$5M	237990	Small Business IFB	Standalone	Q1FY24	Q2FY24

Useful Links/Resources

- SAM.gov
- [Find Contracting Opportunities](#)
- [Rock Island District Contracting](#)
- [USACE Small Business Program Website](#)



U.S. ARMY

STAY CONNECTED

33



On Social Media

On the Web



www.linkedin.com/company/us-army-corps-of-engineers-rock-island-district



www.facebook.com/RockIslandDistrictUSACE



<https://twitter.com/USACERockIsland>



www.instagram.com/usacerockisland/



www.youtube.com/c/USACERockIslandDistrict

The screenshot displays the USACE Rock Island District website's 'FY 2023 In Review' dashboard. The main headline is '\$411 M Second largest program executed in Rock Island District history'. A pie chart breaks down the total into categories: Construction (\$103.86 M), O&M & MSD (\$147.1 M), O&M (\$70.01 M), Cedar Rapids (Reg + Sup.) (\$3.78 M), FCEC (\$0.91 M), Investigations (\$1.17 M), and Brandon Rd. (Reg.) (\$0.06 M). Other key metrics include 1,020 employees, 120 days of Illinois Waterway Consolidated Lock Closures Completed, 77 levees inspected, 137 staff activated for National Flood Fight Material Fight, and 86 of 86 FY23 Tracked Milestones Completed. The dashboard also features sections for 'Key Contracts', 'Program Oversight of National Programs', 'Regulatory' (196 Jurisdictional Determinations, 28 Permit Compliance Visits, 19 Public Outreach Events), and 'Support to Other USACE Missions' (Hurricane Ian: 9 employees, Mississippi Tornado (Southeast Severe Weather): 1 employee, Hurricane Idalia: 1 employee, Maui Wildfires: 3 employees). A '1st District in USACE to Earn the U.S. Army Safety and Occupational Health Star Award' badge is also present. The navigation sidebar on the right includes: NAVIGATION (River Charts, Lock Status, Tonnage Data), RIVERGAGES (River & Lake Levels, Forecast Info, Historic Data), RECREATION (Campgrounds, Boat Ramps, Beaches & Day Use), NEED A PERMIT, and PUBLIC NOTICES.

www.mvr.usace.army.mil



U.S. ARMY

POINTS OF CONTACT



Rock Island District Commander
Col. Jesse Curry
(309) 794-5249

Engineering & Construction Roger Perk (309) 794-5227	Programs & Project Management Kimberly Thomas (309) 794-5260	Operations Division Tom Heinold (309) 794-5401
Construction Branch Richard Busch (309) 794-5480	Contracting Division Scott Harris (309) 794-5628	Small Business Programs Troy Robbins (309) 794-5205
Regulatory Branch Matt Zehr (309) 794-5372	Emergency Management Sarah Jones (309) 794-5206	Inland Navigation Design Center Lenna Hawkins (412) 862-7536



U.S. ARMY



QUESTIONS?

troy.a.robbers@usace.army.mil