



# PENNSYLVANIA TURNPIKE COMMISSION

**SAME Small Business Workshop  
5-14-24**

**Don Klingensmith, P.E., Assistant Chief Financial Officer**

# Economic Engine

## The PA Turnpike Commission is more than a roadway.

- A billion-dollar enterprise driving our state and national economies
- Generates, collects, and manages \$1.6 billion annually



**565+**  
MILES



**10**  
TUNNELS



**136**  
FACILITIES



NEARLY **90**  
INTERCHANGES

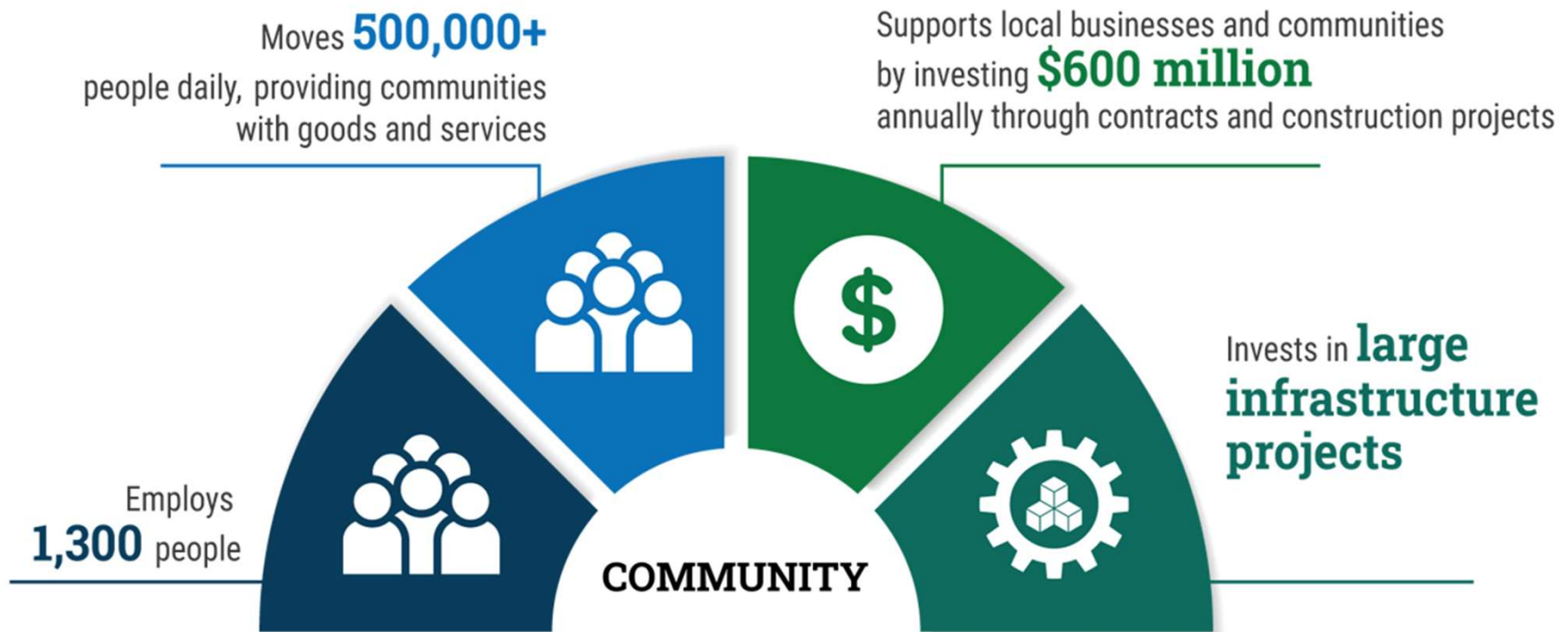


**851**  
BRIDGES



**1,300+**  
EMPLOYEES

# Strengthening Communities



# Safety and Customer Service Leader

**The PA Turnpike Commission consistently outperforms our peers in the safety and reliability of our roadway.**



Crash Rates



Work Zone Safety



Incident Clearance Rates

# Driving the Future

**The PA Turnpike is among the most highly respected in the industry.**



## **Build**

Total System  
Reconstruction



## **Connect**

Fiber Optic Network  
and Alternative Energy



## **Innovate**

All-Electronic and  
Open Road Tolling  
Operations

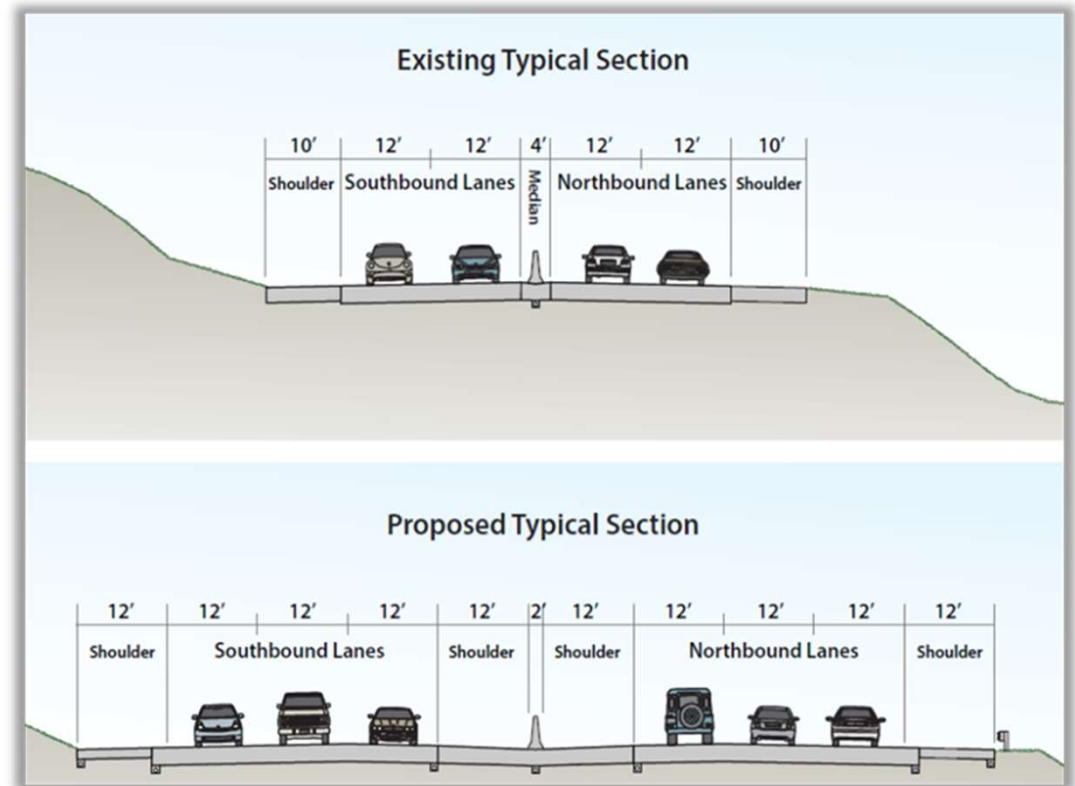
# Total Reconstruction



# Total Reconstruction

## Benefits of Total Reconstruction

- Increased capacity
- Increased safety
- Increased footprint benefits incident management
- Less need for return work; patching
- Smoother ride; adjusting alignment where needed
- Modernized project phasing means less duration and disruption



# Open Road Tolling Conversion – 2025/26

**All tolling points move to the roadway, using overhead gantries to replace traditional exit/entry points.**

- Phased Implementation 2025/27
  - East of Reading and the N.E. Extension early 2025
  - Western Implementation 2026 (tent.)
- Interchange building demolition in 2025-2027





# Open Road Tolling Benefits



## Meets customer expectation

- Clear preference for electronic tolling methods; 85+ adoption of E-ZPass
- National standard



## Increases access

- Built at a fraction of the cost of an interchange
- Increases ability to fulfill the access requests we receive from communities across the Commonwealth
- \$25 million in savings per year on operations and maintenance



## Safer

- Eliminates confusion and lane switching at exit/entry



## Increases mobility

- Eliminates travel-time impacts of traditional tolling



## Better for the environment

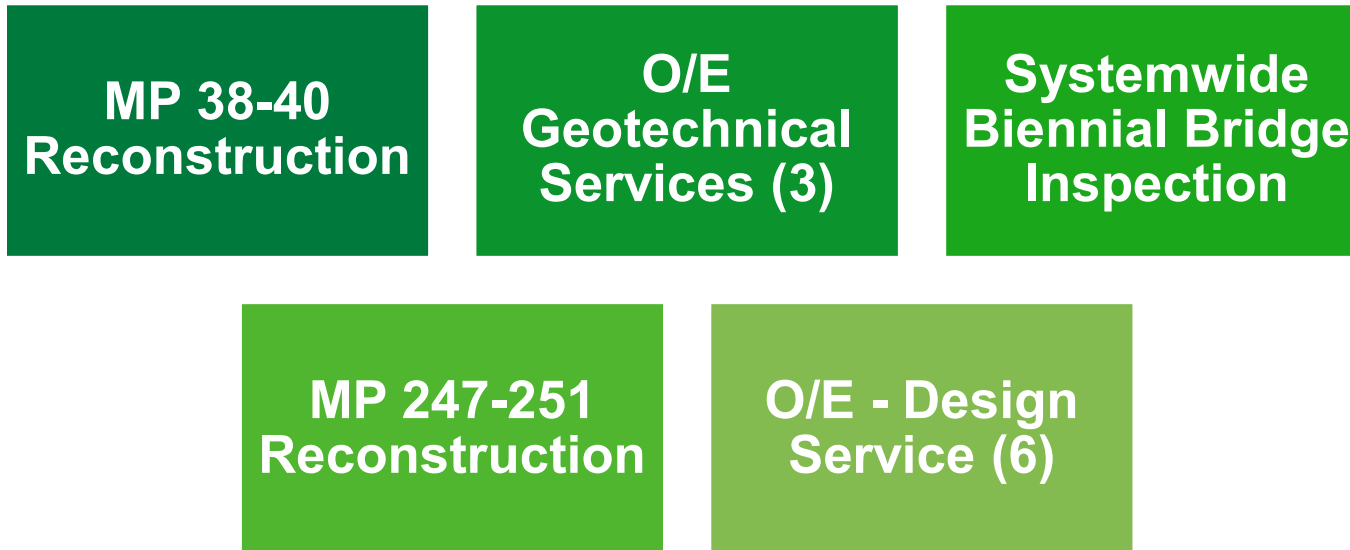
- Continuous travel results in lower carbon emissions
- Smaller physical footprint

## Project Advertisements – upcoming months\*

O/E Aerial Mapping	O/E CM/CI West (2)	O/E – Architectural Services	O/E Design Services Systemwide (6)
O/E CM/CI East (2)	O/E CI West (2)	Breezewood I/C MP 160-163	O/E CI East (2)
	O/E Survey Systemwide	Tunnel Inspection Systemwide	

\* anticipated dates/timeframes are subject to change

## Project Advertisements – future\*



\* anticipated dates/timeframes are subject to change

## Project Advertisements – future\*

**MP 138-145  
Reconstruction**

**MP 145-149  
Reconstruction**

**MP 10-12  
Reconstruction**

**MP 134-138  
Reconstruction**

\* anticipated dates/timeframes are subject to change

# Doing Business with the PTC

- PennDOT's Engineering Construction Management System (ECMS)
  - PTC Engineering Advertisements through ECMS
  - All Submissions (SOIs) via ECMS
  - Firms must be registered as an ECMS Business Partner (primes and subs)
    - Annual Consultant Qualifications Package
    - Overhead Rate approval
    - Diverse Business Inclusion
- PTC's Vendor Portal – required if:
  - Entering into agreement for services/supplies with PTC
  - Invoicing and Reporting
  - Responding to non-Engineering Procurements (RFPs or RFQs)
  - [www.paturndpike.com](http://www.paturndpike.com); Click on: “Business Hub” or “Do Business With Us” and follow prompts to Vendor Portal