

# US ARMY CORPS OF ENGINEERS SEATTLE DISTRICT OVERVIEW SAME PNW INDUSTRY DAY

COL Kathryn Sanborn  
District Commander  
Seattle District  
US Army Corps of Engineers  
June 2024



U.S. ARMY  
US Army Corps  
of Engineers®

# AGENDA

1

District Overview

2

Project Highlights

3

Finding Details

4

Contact Information



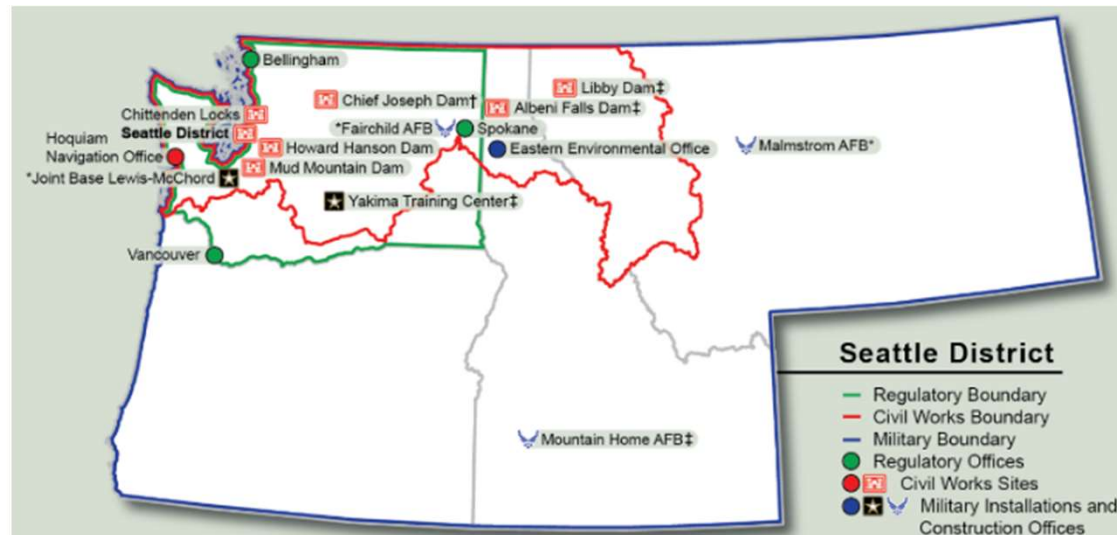
U.S. ARMY



US Army Corps  
of Engineers®

# SEATTLE DISTRICT – A FULL-SERVICE DISTRICT

- **FY24 Workload**
- Obligations = \$744 Mil
  - ✓ Military – 50%
  - ✓ Civil Works – 42%
  - ✓ Env. – 8%
- **19 WA/ID/MT**  
Congressional Members  
(Civil Works)
- **50** Federally recognized  
tribes
- **6** Flood Risk Reduction  
Dams
- **3** Hydropower Dams
- **1** Busiest lock in the Nation



# SEATTLE DISTRICT OVERVIEW

## Operating Projects & Civil Works



The map displays the Pacific Northwest region, including parts of Washington, Oregon, and Idaho. Major cities like Seattle, Spokane, and Missoula are marked. Several project locations are indicated by red icons with the company logo. Yellow arrows point from these icons to detailed inset images of the projects:

- Lake Washington Ship Canal:** Located near Seattle, showing a large ship passing through the canal.
- Mud Mountain Dam:** Located in the central Pacific Northwest, showing a large concrete dam structure.
- Howard Hanson Dam:** Located in the central Pacific Northwest, showing a dam with a large reservoir.
- Chief Joseph Dam:** Located in the central Pacific Northwest, showing a dam with a large reservoir.
- Albeni Falls Dam:** Located in the central Pacific Northwest, showing a dam with a large reservoir.
- Libby Dam:** Located in the northern Pacific Northwest, showing a dam with a large reservoir.

# SEATTLE DISTRICT OVERVIEW

## Military Mission



The map shows the Pacific Northwest region, including parts of Washington, Oregon, and Idaho. Key cities labeled are Seattle, Olympia, Portland, Salem, Boise City, and Helena. Major highways like I-5, I-90, and I-84 are shown. Yellow arrows point from callout boxes to specific locations on the map.

- JBLM (JBLMAO, NWAO, LACPO)**: Callout box with an image of a Chinook helicopter, pointing to Joint Base Lewis-McChesney.
- FAIRCHILD AFB (AMC) Spokane Resident Office**: Callout box with an image of a B-52 bomber, pointing to Fairchild Air Force Base.
- MALMSTROM AFB (GSC) Resident Office**: Callout box with an image of a Minuteman missile, pointing to Malmstrom Air Force Base.
- YAKIMA TC Project Office**: Callout box with an image of a tank, pointing to the Yakima Training Center.
- MOUNTAIN HOME AFB (ACC) Project Office**: Callout box with an image of an F-16 fighter jet, pointing to Mountain Home Air Force Base.

# SEATTLE DISTRICT OVERVIEW

## Environmental/IS

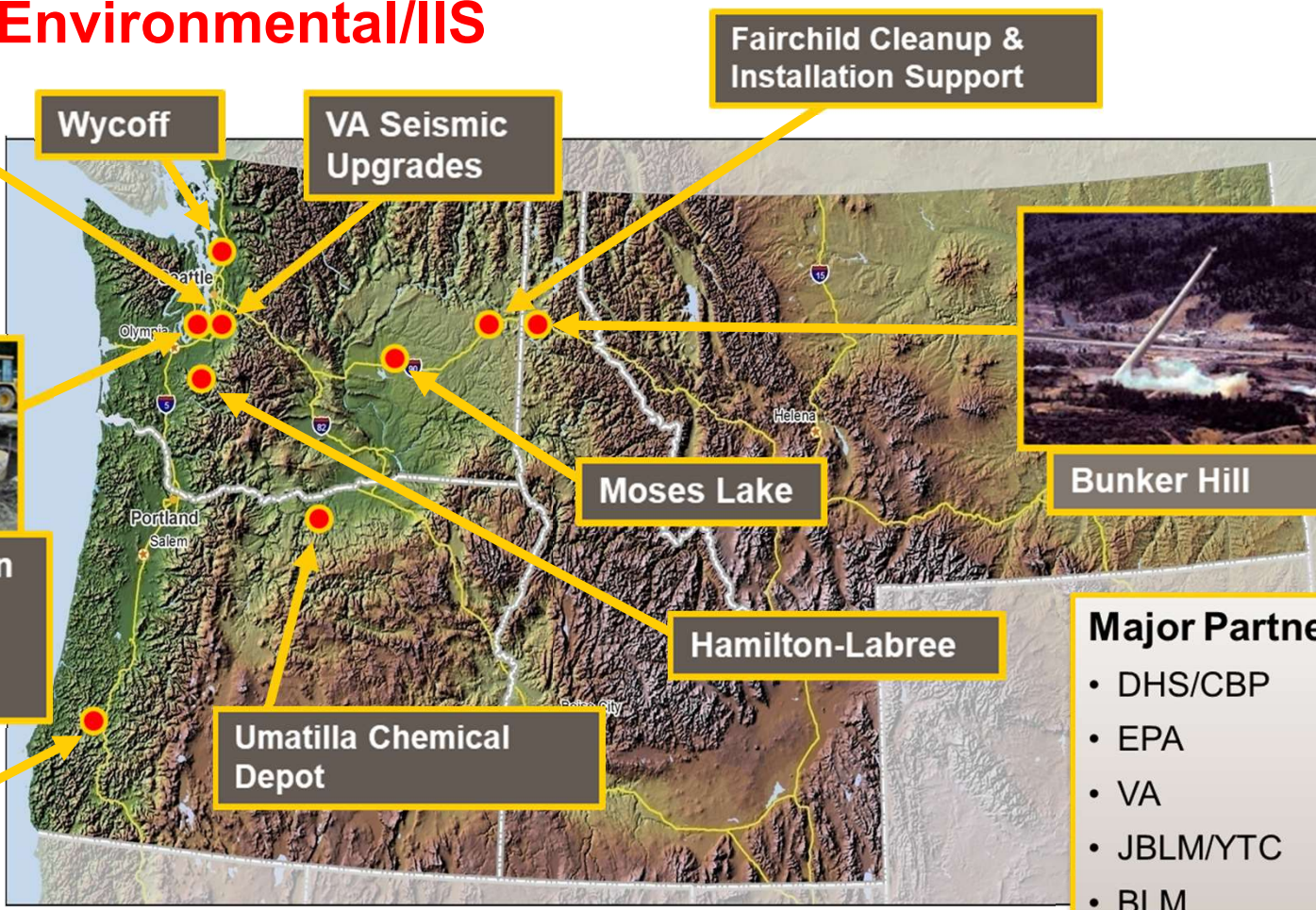


Well 12A



JBLM-Installation Support, Tanks, Energy & Range Support

Formosa Mine



Wycoff

VA Seismic Upgrades

Fairchild Cleanup & Installation Support



Bunker Hill

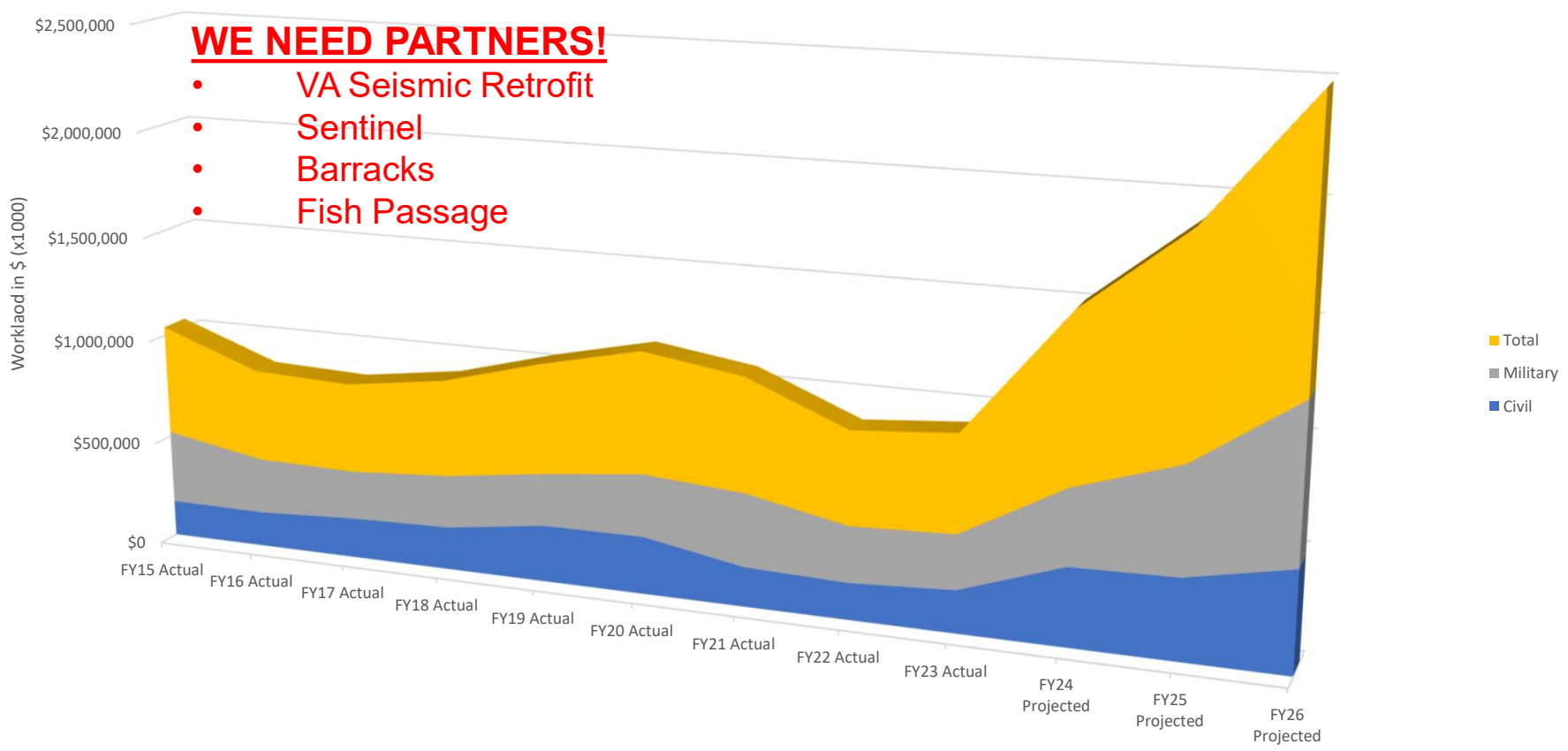
Moses Lake

Hamilton-Labree

Umatilla Chemical Depot

- Major Partners:**
- DHS/CBP
  - EPA
  - VA
  - JBLM/YTC
  - BLM

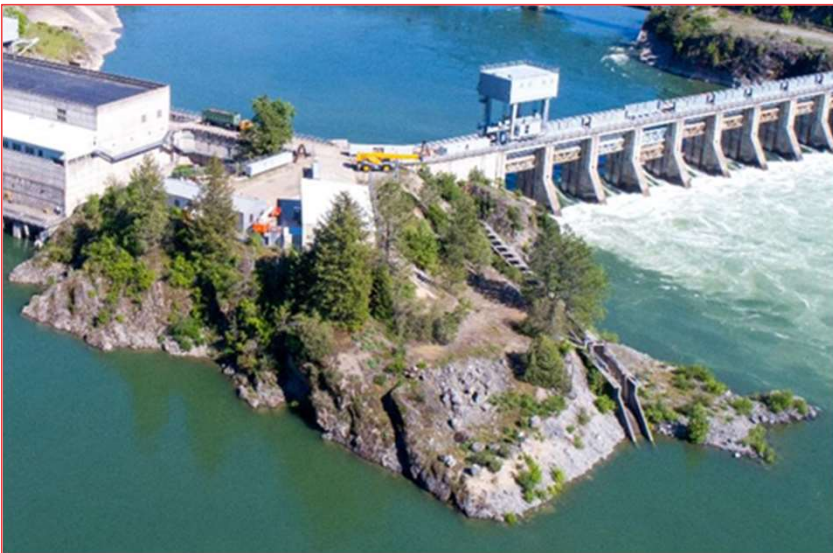
# SEATTLE DISTRICT WORKLOAD FORECAST



# FISH PASSAGE

## General Construction:

- Howard Hanson Dam
- Albeni Falls Dam
- Mud Mountain Dam

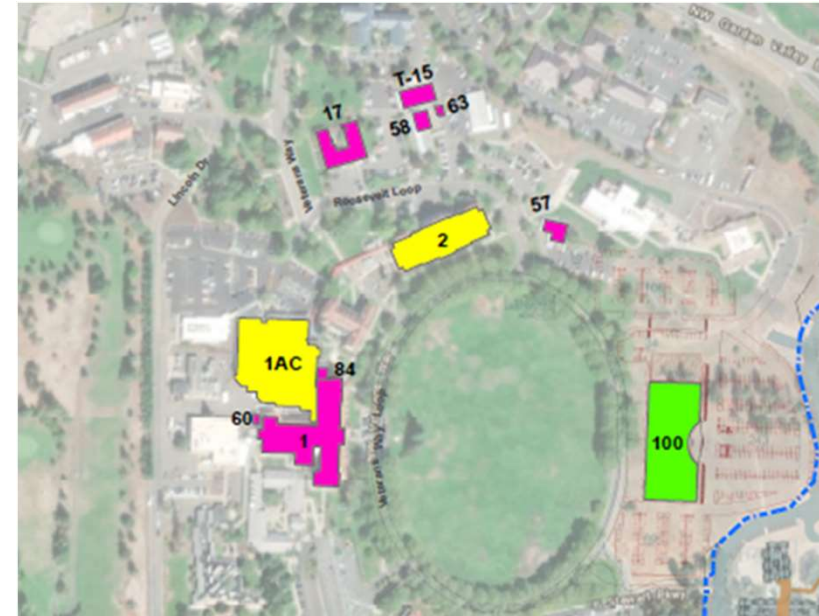




# VETERAN AFFAIRS MAJORS

## Majors Program:

- VA American Lake (VAAL) Phase 2B, Bldg. 201, FY25
- VAAL Phase 3, Bldgs. 81/81AC, FY27
- VA Roseburg, Bldgs. 2 Reno & 1 Replace, FY26



# ENVIRONMENTAL/REMEDIAL CONSTRUCTION

## **Formosa Mine Superfund Site – Riddle, OR**

- Construction of containment cells for mine tailings
- Early FY 25 Award
- Estimated at \$20 Mil



## **Wyckoff/Eagle Harbor Superfund Site –**

Bainbridge Island, WA

- First Phase
- Wall replacement adjacent to the intertidal area
- Late FY24 Award
- Estimated at \$90 Mil



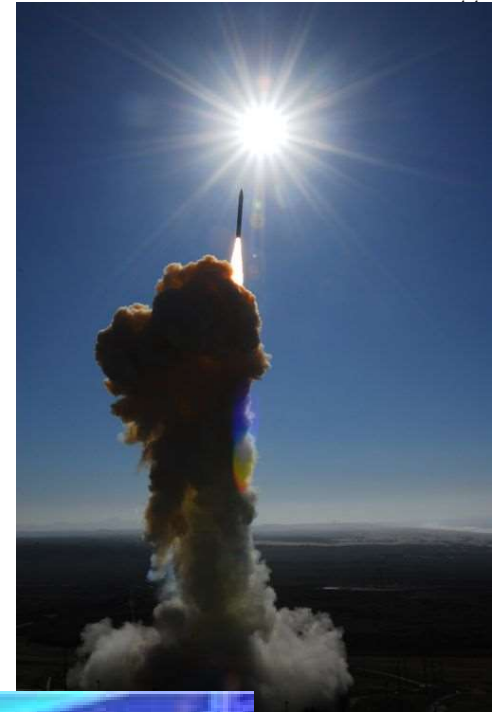
# SENTINEL (GBSD)

## **Purpose:**

- A complete recapitalization of the current capability. The Sentinel intercontinental ballistic missile weapon system is the U.S. Air Force's program to modernize the land-based leg of the strategic triad, replacing the Minuteman III system that has been in service for more than half a century

## **NWS AO Sentinel Projects:**

- Program Integration Office / Program Management Office
- Integrated Command Center (ICC)
- Consolidated Maintenance Facility (CMF)
- Integrated Training Center (ITC)
- Missile Handling Complex (MHC)
- Maintenance Training Facility (MTF)
- GBSD Operations Group, Renovation
- Security Forces Tactics Trainer (SFTT)



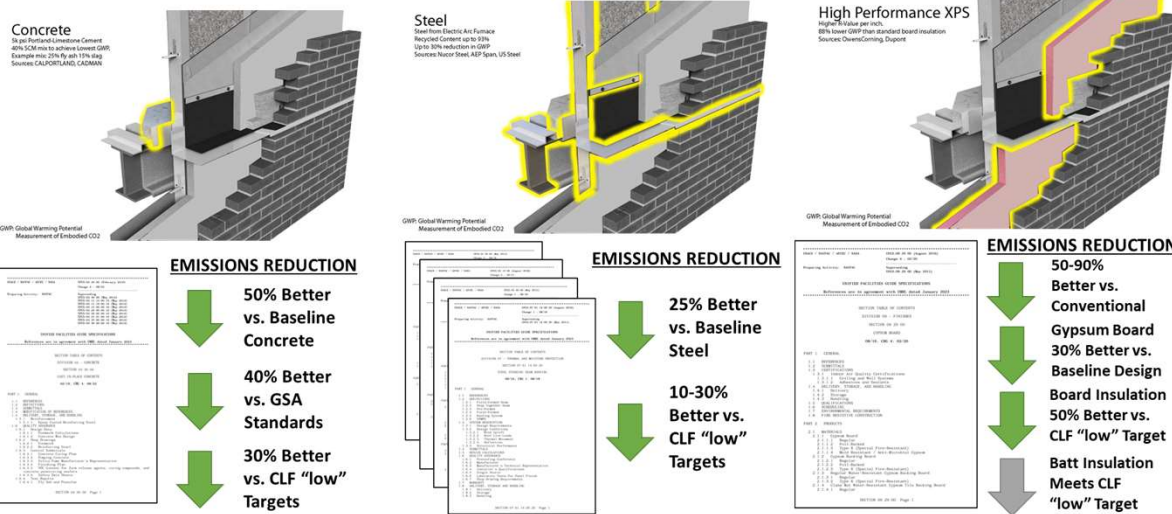
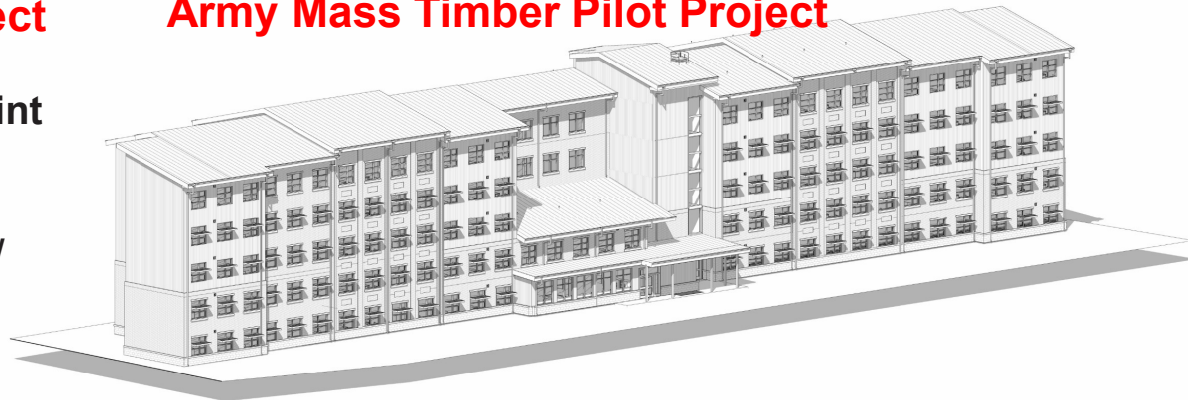
# BARRACKS PILOT PROJECTS

## Army Sustainable Materials Pilot Project

### Unaccompanied Personnel House (UEPH), Joint Base Lewis McChord Project:

- 168 soldiers via two new 3-story Barracks
- Sustainable material as “primary material” IAW NDA 2022 s.2861 requirements

## Army Mass Timber Pilot Project



### Features of Project:

- Accommodate up to 200 soldiers
- Maximum incorporation of Mass Timber in structural and architectural features (also 100% electrification)

### Current Activities for Mass Timber Pilot:

- 65% Design Complete Feb 2024
- 3<sup>rd</sup> Party/Partner providing general Mass Timber Design information and feedback/support via Q&A.
- Incorporated mass timber elements in structural and architectural features – design optimization underway

# SMALL BUSINESS PAGE - FOR PROJECT / CONTRACT DETAILS!

[USACE NWS SB Page - https://www.nws.usace.army.mil/Business-With-Us/Small-Business/](https://www.nws.usace.army.mil/Business-With-Us/Small-Business/)

[Contracting Opportunities - https://www.nwd.usace.army.mil/Contracting-Opportunities/SAM.gov with the Northwestern Division \(army.mil\)](https://www.nwd.usace.army.mil/Contracting-Opportunities/SAM.gov%20with%20the%20Northwestern%20Division%20%28army.mil%29)

## 2024 SAME Small Business Conference

November 19 to November 22  

2024 Small Business Conference in New Orleans at the New Orleans Convention Center, New Orleans, LA...

## Seattle Current Opportunities / Forecast

<https://sam.gov/content/home>



Seattle District  
Forecasted  
Contracting Opportunities

Seattle District  
MATOC / SATOC Holders



US Army Corps  
of Engineers®

- Forecast updated regularly
- Annual outreach schedule



# HOW TO REACH US - SEATTLE DISTRICT

## Contracting and Small Business Information

- <https://www.nwd.usace.army.mil/Contracting-Opportunities/>
- DODAAC/SAM.gov keyword/solicitation: # W912DW
- Washington State APEX Accelerators (formerly PTAC): [washingtonptac.org/](http://washingtonptac.org/)
- Oregon State APEX Accelerators (formerly PTAC): [www.gcap.org/](http://www.gcap.org/)



[www.facebook.com/USACENWS](http://www.facebook.com/USACENWS)



<https://www.youtube.com/@SeattleDistrictUSACE>

## Small Business

Enshané Hill-Nomoto

[Enshane.Nomoto@usace.army.mil](mailto:Enshane.Nomoto@usace.army.mil)

206-316-3990

## Contracting Business

### Oversight

Natanielle Little

[Natanielle.L.Little@usace.army.mil](mailto:Natanielle.L.Little@usace.army.mil)

206-764-6588

## Upcoming FY Known Opportunities Listing

- <https://www.nws.usace.army.mil/Business-With-Us/Small-Business/>
- <https://www.nws.usace.army.mil/Business-With-Us/Contracting/>