



ARDITA DUSHI NELSON, PE, MAPM
Federal Program Manager

Company Overview

SAME Tulsa Post
16 July 2024

130
SINCE 1894

 **FREESE
AND
NICHOLS**

MULTIDISCIPLINE FIRM

engineering, architecture,
environmental, planning,
program management and
construction management

WHO WE SERVE

- Airports
- Cities/Counties
- Federal Agencies
- Tribal Nations
- State Agencies
- Transportation Agencies
- Ports
- Railroads
- River Authorities / Water Districts
- Colleges and Universities

- Full-service employee-owned A/E firm
- Headquartered in Fort Worth, TX
- 130-Year History; 10-Year Anniversary in OK
- First A/E firm to earn the Malcolm Baldrige National Quality Award
- In 2022, newest member of MAC Baldrige Society, the Trustees of the Baldrige Foundation's Institute for Performance Excellence
- About 80% of work comes from repeat-clients

OFFICE LOCATIONS

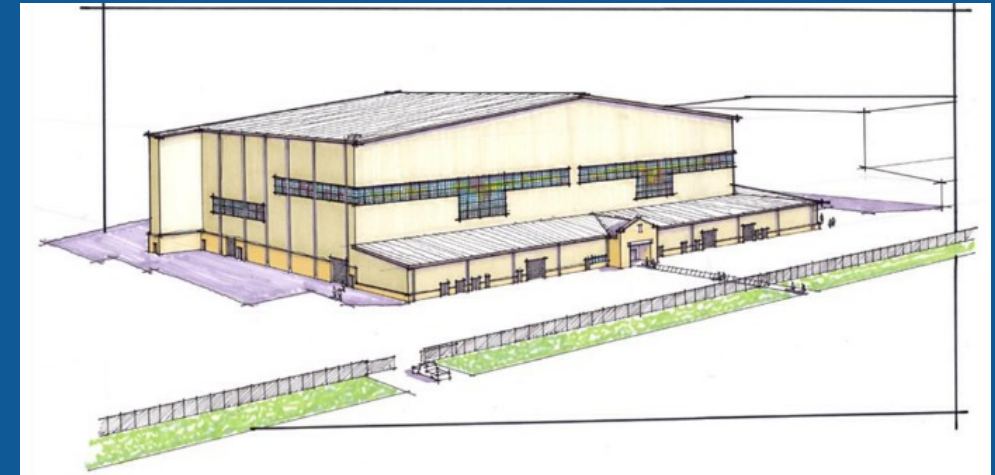


FACILITIES

Architecture | Structural | Electrical | Mechanical | Plumbing



- Building Design
- Building Survey and Analysis
- Interior Design
- Facility Master Planning
- Heating, Ventilation, Air Conditioning
- Sustainable Design
- Indoor Environmental Quality
- Energy Audits and Planning
- Commissioning
- Electrical Power
- Lighting
- Power Systems Studies
- Instrumental and Control
- Plumbing
- Fire Suppression/Fire Alarm
- IT/Data
- Security



Tinker AFB - KC-46A 2-Bay Hangar

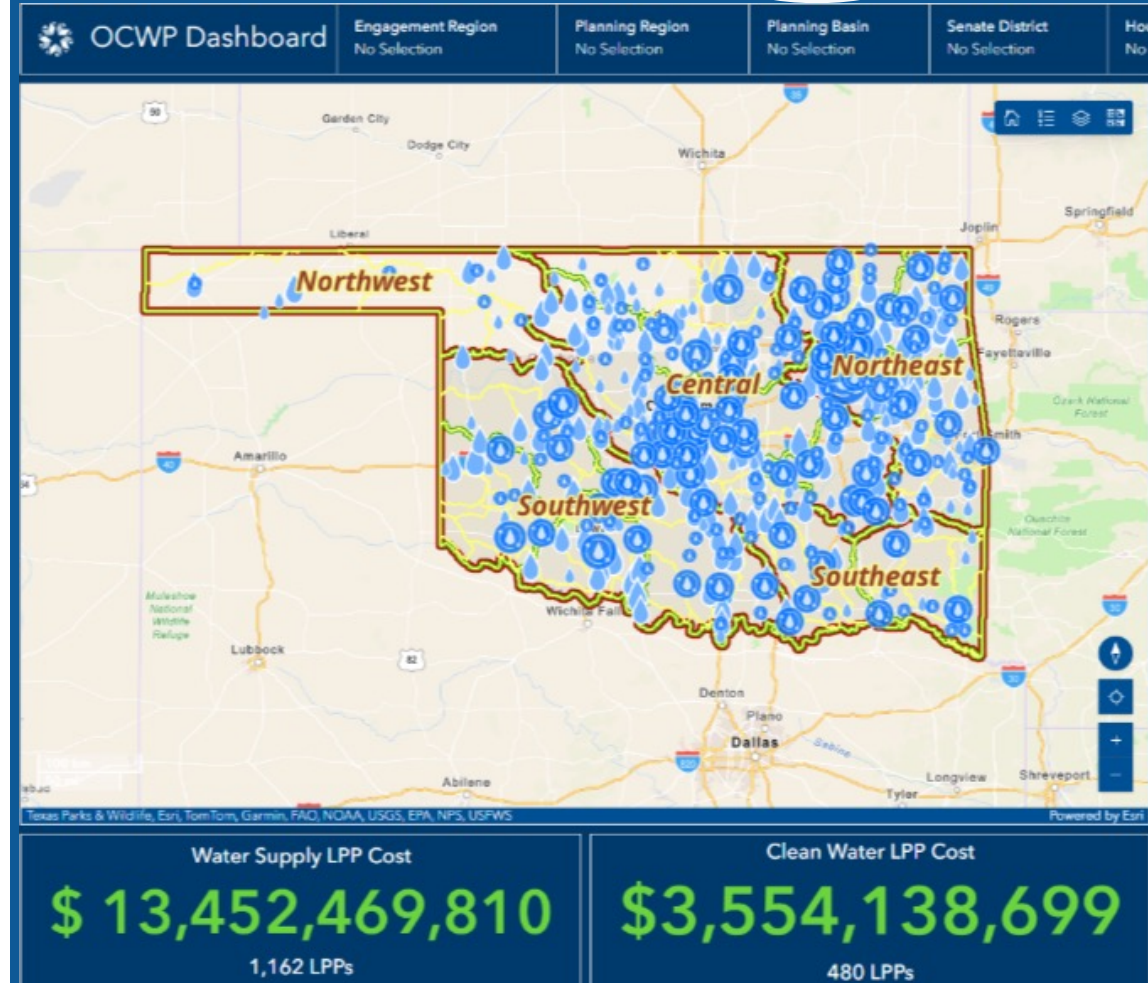


Texas Military Department – Maintenance Renovations

WATER / WASTEWATER

Master Planning / Treatment / Utilities and Transmission

- Water/wastewater Master Planning
- Transmission Pipelines and Utilities
- Wastewater Lift Stations
- Pump Stations
- Treatment Plants
- Industrial Pretreatment
- Alternative Treatment Studies
- Tunneling
- Bond Planning
- Capital Improvement Development
- Impact Fees
- Capital Renewal Assessments
- Collaborative Project Delivery
- Asset Management
- Building Plumbing
- Cyber Security



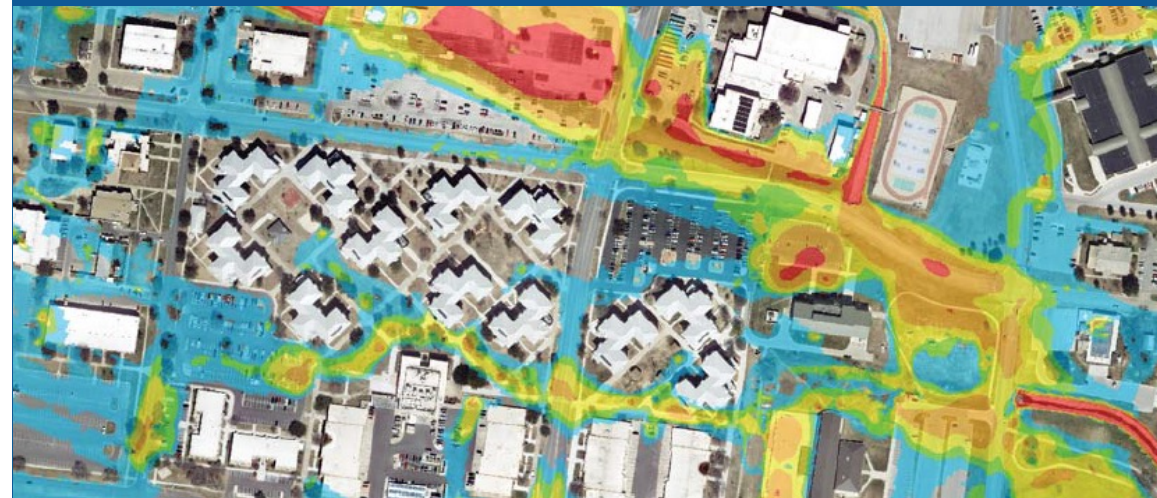
OWRB, OCWP Infrastructure Needs Assessment
(funded via USACE PAS)

WATER RESOURCES

- Coastal Services
- Dam and Levee Design
- Floodwall and Gate Design
- Environmental Science
- Environmental Permitting
- Water Rights
- Hydrologic and Hydraulic modeling
- Geotechnical Engineering
- Stormwater Management and Design
- Structural Engineering
- Tunneling Services
- Water / Wastewater Transmission and Utilities
- Construction Management
- Program Management
- Construction Inspection Services



City of Tulsa, Eucha Dam Anchoring



Fort Cavazos Stormwater Master Plan
(Installation-wide)

Transportation/Environmental

- Transportation Design
- Traffic Engineering
- Environmental Science
- Environmental Permitting
- Fluvial Geomorphology
- Hydrologic and Hydraulic modeling
- Stormwater Management and Design
- Structural Engineering
- Geotechnical Engineering
- Construction Management
- Inspection Services
- Program Management



OTA, H.E. Bailey
Reconstruction



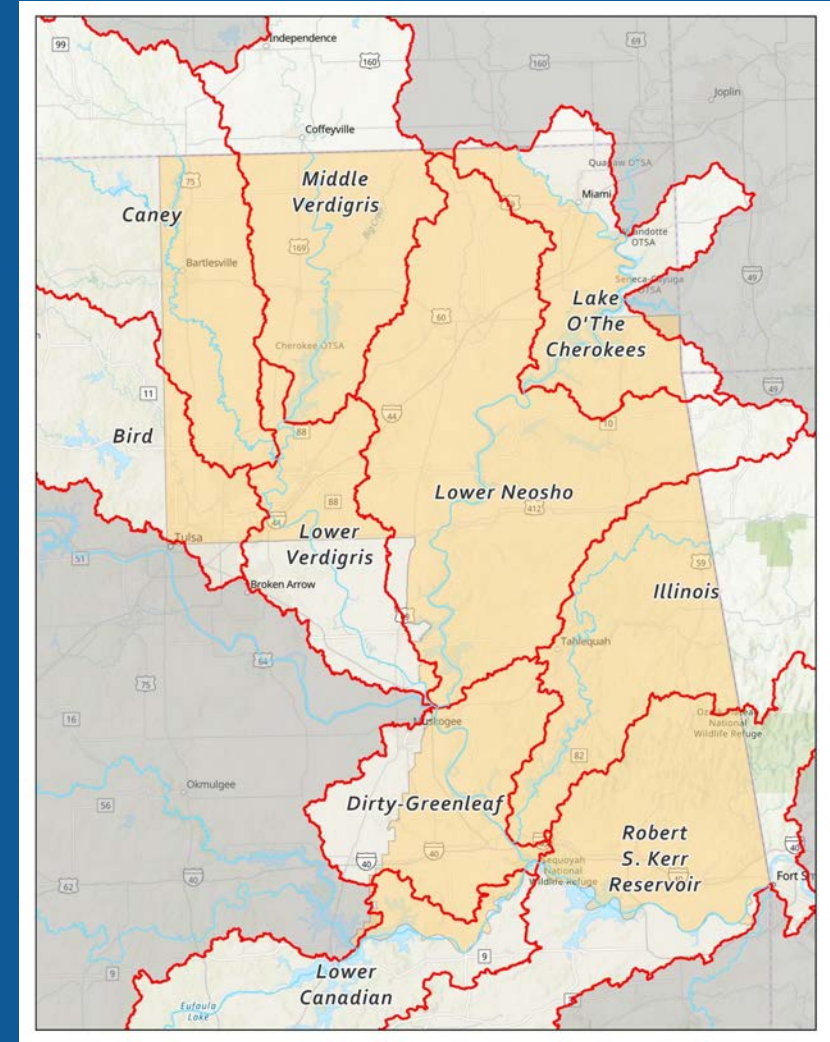
ODOT, SH 34
Road and Bridge
Improvements

Tribal Nations

- Drought Resiliency Planning
- Water / Wastewater Transmission and Utilities
- Stream Restoration
- Hazard Mitigation
- Federal Grant Application Support

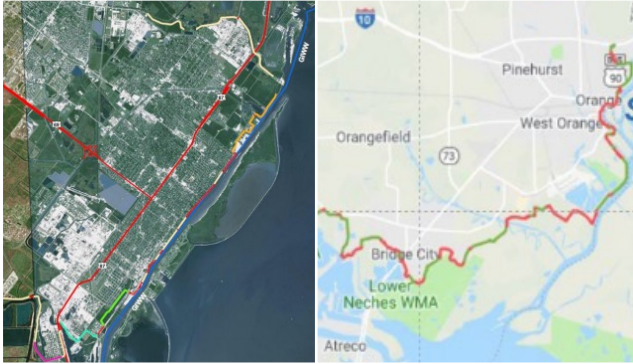


Low Impact Design for Tribal FEMA Grant Application

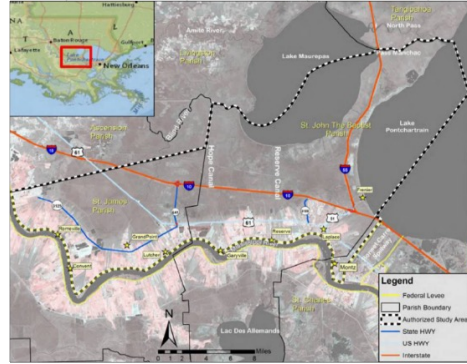


Targeted Watershed within the Cherokee Nation

FEDERAL CIVIL WORKS



Port Arthur and Orange Projects
(USACE Galveston)



West Shore Lake Pontchartrain
Reach 105 & 108
(USACE New Orleans)



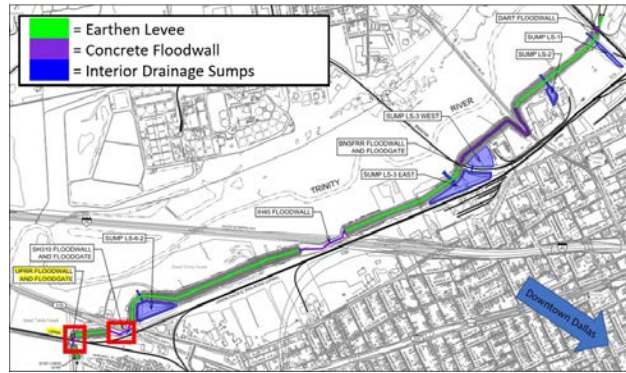
M. Central City Isolation
Gates & Pump Station
(USACE Fort Worth)



Dallas Floodway Levee
Raise and Slope Flattening
(USACE Fort Worth)



Wharton Levee System
(USACE Fort Worth)



Dallas Floodway Extension
Lamar Levee
(USACE Fort Worth)



Rio De La Plata Flood Control Project
Utility Relocations
(USACE Jacksonville)

INNOVATIVE

LOCAL

TRUSTED

TEAM



WATER RESOURCES



FACILITIES



TRANSPORTATION



ENVIRONMENTAL

THANK YOU!



CONSTRUCTION PHASE



WATER / WASTEWATER