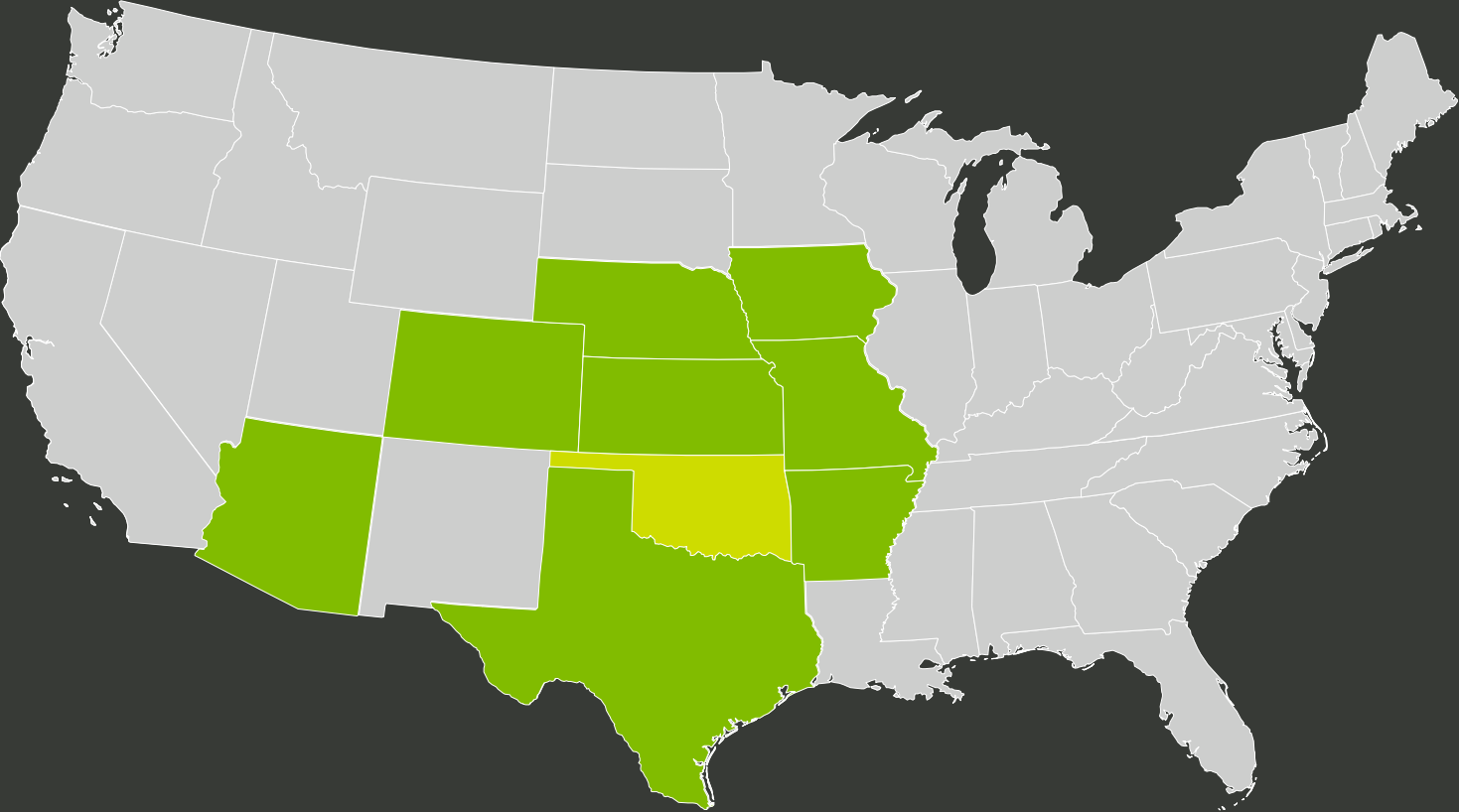


olsson®

FOOTPRINT GROWTH

Olsson has 1,650 employees in 30 regional offices.



#76

ENR

TOP 500
DESIGN FIRMS

2021

SERVICES



ENGINEERING

- Civil Engineering
- Electrical Engineering
- Mechanical Engineering
- Structural Engineering



ENVIRONMENTAL

- Air Quality
- Environmental Planning & Permitting
- Hydrogeology
- Remediation



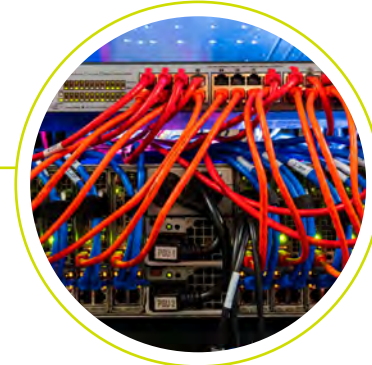
FIELD SERVICES

- Geotechnical
- Materials Testing
- Special Inspections
- Drilling
- Nondestructive Testing
- Surveying
- Construction Management



PLANNING & DESIGN

- Community Planning
- Landscape Architecture
- Master Planning
- Program Management
- Site Design
- Transportation Planning



TECHNOLOGY

- Geographic Information Systems
- Intelligent Transportation Systems
- Systems Engineering
- Traffic Management Systems
- Utility & Industrial Automation
- Project Visualization

MARKETS



ENERGY

Oil & Gas
Power
Renewable Energy
Thermal Energy
Electric Vehicle (EV)



GOVERNMENT

Federal
State
Local



TRANSPORTATION

Aviation
Bridges
Highways & Streets
Mass Transit
Rail



WATER

Dams & Levees
Drinking Water
Groundwater
Stormwater
Wastewater



LAND & FACILITIES

Commercial
Data Centers
Education
Healthcare
Industrial
Residential
Sports & Recreation



TELECOMM

Outside Plant
Inside Plant
Network Planning
Wireless

Current Contracting Vehicles | Army

- **USACE Tulsa**

- 2020-2025 General AE Services WOSB IDIQ (W912BV20D0024), Kenall Consulting Engineers
- 2020-2025 Horizontal Construction SB MATOC (W912BV20D0041), Gideon USA
- 2018-2023 Hydrologic and Hydraulic Engineering and Design IDIQ (W912BV19D0002), Halff Associates

- **USACE Fort Worth**

- 2020 – 2022 HUBZone MATOC El Centro San Diego Border Patrol (W9126G17R0032), Gideon USA
- 2019 – 2024 MATOC Horizontal Services Rio Grande Valley Laredo, Del Rio, Big Bend and El Paso Border Patrol Sectors (W9126G18R0092), Gideon USA
- 018 – 2023 8(a) MATOC El Paso Tucson Yuma Border Patrol – (W9126G17R0034) Gideon USA

- **USACE Little Rock**

- 2018 – 2023 AEC Architect and Engineering Services Required For Various Military And Civil Works Projects (W9127S18D0014), Premier-Stanley JV (Olsson acquired Premier Engineering in 2021)



Current Contracting Vehicles | Army

- **USACE Kansas City**

- 2019 – 2024 AE Services for Civil Works Planning and Design IDIQ (W912DQ19D1010), Mead & Hunt/Olsson JV
- 2021 – 2026 Contracts for Military Services IDIQ (W912DQ20R4002), Black & Veatch/WSP JV
- 2020 – 2024 John Cochran Replace Bed Tower Clinical Building Expansion and Parking Garage (W912DQ20D4000), RLF Architecture
- 2019 – 2023 Fort Leonard Wood Replacement Hospital (W912DQ19C4011), JE Dunn
- 2020-2025 Horizontal Construction SB MATOC (W912BV20D0041), Gideon USA
- 2019 – 2022 Small Business IDIQ MATOC (W912DQ19D4002), Southwind Construction

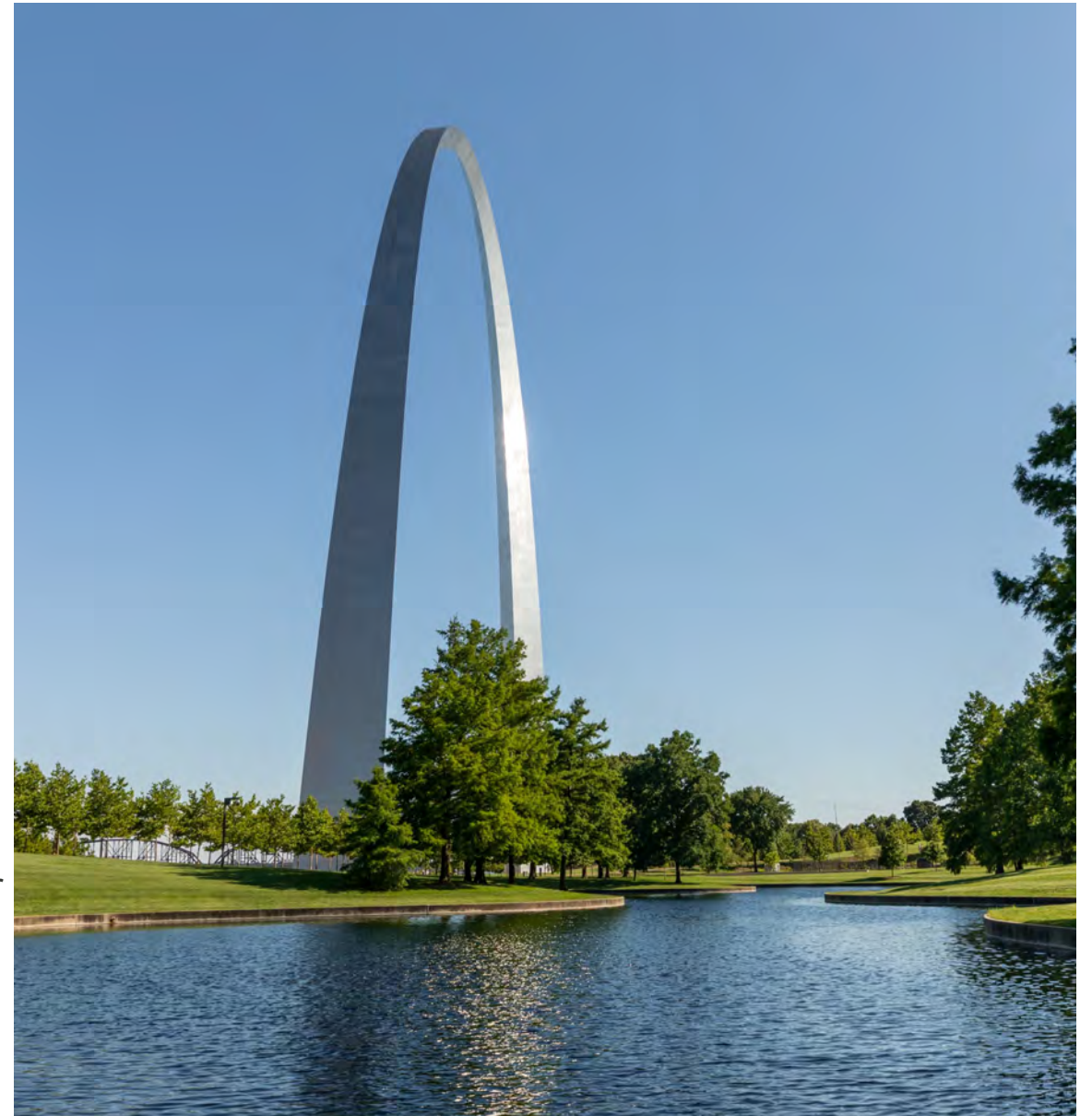
- **USACE Omaha**

- 2021 – 2026 A-E Services Design and Evaluation Services for Railroads and Roadways, Worldwide (W9128F-22-D-0034), Stanley-Olsson JV
- 2020 – 2025 A-E Geotechnical Services (W9128F21D0015), AECOM
- 2019 – 2024 AEC Unrestricted Rapid Disaster Infrastructure Response MATOC (W9128F20D0008), AECOM
- 2019 – 2024 AEC Rapid Disaster Infrastructure Response 8(a) MATOC (W9128F19D0064), Medvolt



Current Contracting Vehicles | USAF & OTHER FEDERAL

- USAF – Vance Air Force Base (AFB) 2019 – 2022 AE Services for IDIQ Design Projects at Vance Air Force Base (A01079-A13A), Olsson
- USAF– Joint Base San Antonio 2020 – 2025 AEC Architecture and Engineering Services at Joint Base San Antonio (FA301620D0013), Premier-Stanley JV (Olsson acquired Premier Engineering in 2021)
- USAF – Whiteman AFB 2017 – 2022 AE Services IDIQ at Whiteman Air Force Base, Finkle Williams Architecture
- Oklahoma Military Department 2021 – 2023 AE IDIQ (CAP 18SOL021), CJC Architects
- Department of Veterans Affairs 2017 – 2022 AEC AE IDIQ for Central Region (VA101F17D2913), Spur Design
- Environmental Protection Agency 2019 – 2023 AEC Remedial Acquisition Framework ESO (68HE0118D0013), ClearPath JV
- Federal Bureau of Prisons 2020 – 2025 AE Supplemental Services IDIQ for North Central Region (15B4002D00000008), DLR Group
- U.S. Postal Service 2021 - 2026 AE Services Multiple Areas (10426719A0015), GH2 Architects



CONTACT US

Steve Iverson, PE, PMP

Federal Program Leader

913.748.2523

siverson@olsson.com

Joanna Longsdon

*Federal Market Business
Development Leader*

314.296.7422

jlongsdon@olsson.com

Clif Warren, PE

Senior Advisor, Federal

918.645.9663

cwarren@olsson.com