

# The Value of Membership



Few organizations provide exposure to a such broad variety of professional experience and expertise while at the same time supporting the defense of our nation. There is no way to compare and contrast the value of SAME as there is no organization that provides the services that SAME provides.

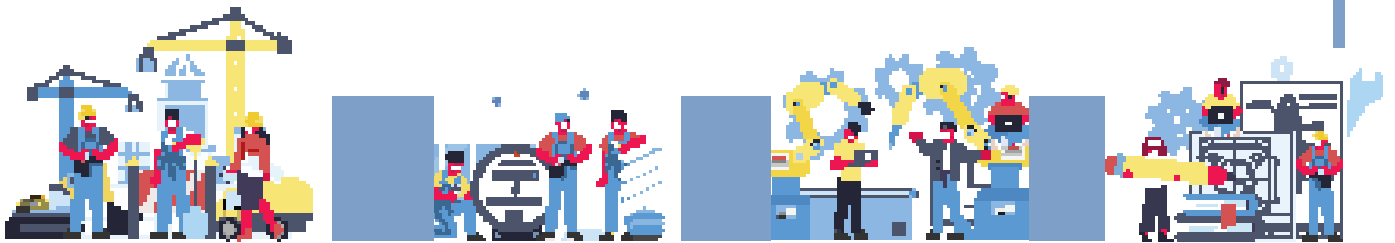
*– Lawrence Schorr, 787th Civil Engineer Squadron*

---

## DID YOU KNOW?

The first Corporate Members joined in the 1950s, the same time the Society began hosting an annual Military-Industrial Conference, which drew widespread attention from many notable national leaders, including remarks from President Dwight Eisenhower. SAME's continues to support strong industry-government engagement today.

---



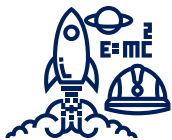
# A Global Reach

SAME members live and work across the United States and around the world—in deployed environments with the military or in strategically important places such as Korea, Guam, Germany and the United Kingdom.

The Society has Posts in all major U.S. cities and nearby many military bases and federal installations. Throughout the decades, SAME also has frequently established Posts where they have been needed, such as in Vietnam in the 1960s or the Middle East after 9/11. Today, SAME has over 100 Posts and Field Chapters worldwide. No matter where your business does business, you will find fellow SAME members there.

## Collaborating Across the Industry

SAME’s nearly 1,600 member companies support all aspects of the federal A/E/C industry, providing a direct opportunity for your business to build meaningful connections throughout the marketplace.



**288**  
Engineering



**529**  
Construction



**444**  
Utilities/Energy



**499**  
Environmental



**633**  
Architecture/Buildings



**163**  
Transportation



**146**  
Facility Maintenance

\*companies may show in multiple categories

## Benefits of Your Company's SAME Membership

SAME provides unmatched opportunities to achieve your business goals supporting military, federal, state, and local agencies. Be a trusted partner in the A/E/C sector: become an SAME member company!

- Build your firm's relationships and network with the public and private sectors.
- Exhibit at or sponsor events at the local (Post) and national levels, advertise in *TME*, and get preferred opportunities to feature your company in our digital advertising platforms.
- Expand your brand with listings in our public-facing and members-only Company Directory, with search functionality allowing you to be found by your speciality, location, and more.
- Participate in Listening Sessions, Table Top Exercises, and other industry-government engagement discussions with senior leaders.
- Opportunities to provide your employees with leadership roles at Posts, the chance to apply for SAME's Leader Development Program, and serve as mentors at SAME's Camps.
- Help your employees grow in their technical area of expertise through the Communities of Interest.
- Exclusive rates for members that want to be new subscribers to FedMine, GovWinIQ, and Federal Compass market research services
- Conduct business development and gain access through national conferences, regional symposiums, industry days, small business fairs, and other in-person and virtual events.
- Create local relationships and connect with decision-makers at over 100 Posts and Field Chapters. One Post is included in your membership; you may join additional Posts to expand your reach in that markets that you serve.
- Preferred pricing to post your open positions in the SAME Career Center and recruit at the SAME Career Transition Workshop each year.

# OF EMPLOYEES	NATIONAL DUES	POST DUES	EXTRA MEMBER	EXTRA YP MEMBER
1 - 10	\$400	\$80	\$120	\$85
11 - 50	\$800	\$150	\$120	\$85
51 - 100	\$1,000	\$225	\$120	\$85
101 - 500	\$1,150	\$300	\$120	\$85
501 - 1,000	\$1,300	\$350	\$120	\$85
1,001 - 5,000	\$1,450	\$350	\$120	\$85
5,001+	\$1,700	\$350	\$120	\$85

ORGANIZATION TYPE	NATIONAL DUES	PER POST	# OF MEMBERS
GOVERNMENT AGENCY	\$400/3 YEARS	\$80	6
ACADEMIC INSTITUTION	\$400/YEAR	\$80	6
NONPROFIT ASSOCIATION	\$400/YEAR	\$80	6

\*Structure for corporate and organization memberships differ. Rates effective July 1, 2024. Learn more at [www.same.org/join](http://www.same.org/join).

