



SAME NoVA Post 9th Annual Business-to-Business (B2B) Engagement

National Museum of the U.S. Army at Fort Belvoir
October 10, 2024



Photo By Duane Lempke



WELCOME EVERYONE!

Thanks for Joining Us

Julie Smiley

SAME NoVA Post President

exp Federal Inc.



Photo By Duane Lempke



PLEDGE OF ALLEGIANCE

I Pledge Allegiance To The Flag, Of The United States of America, And To The Republic, For Which It Stands, One Nation Under God, Indivisible, With Liberty, And Justice For All





Today's Agency Speakers:
USACE Norfolk – Cherie Kunze, MBA
USACE Baltimore – Bill Tully, PE, DBIA
NAVFAC Washington – David Wolfel, RA



Photo By Duane Lempke



SPECIAL THANKS TO OUR POST'S 9TH ANNUAL BUSINESS-TO-BUSINESS (B2B) ENGAGEMENT SPONSORS





Upcoming Events

Oct 31st – Cyber Security Forum Webinar

Nov 7th – 4th Annual Fall Festival, Bull Run Winery

Dec 5th – Lunch at ANCC – Speaker TBD

**Dec 6th – Leadership & Mentoring Program Graduation,
Maggiano's, Chevy Chase**

March 1st – College Scholarship Applications are Due



Photo By Duane Lempke



Moderator

Ed Chamberlayne, PE, PhD, F.SAME



Photo By Duane Lempke

Society of
SAME
American Military Engineers



NoVA
Northern Virginia Post





**HUITT
ZOLLARS**

The background is a collage of architectural and industrial images. On the left, there's a modern building with large glass windows and a prominent entrance. In the center, there's a large, curved, white architectural structure, possibly a staircase or a walkway. On the right, there's a building with a large red Toyota logo and the text 'TOYOTA CENTER' on its facade. The overall scene is brightly lit, suggesting a daytime setting.

A little about us

580+
Skilled
Personnel

24
National
Offices

Huitt-Zollars *Fast Facts*

Huitt-Zollars offers large firm resources and small firm attention to detail to our Federal clients, many of whom have secured our services through long-term indefinite delivery, or task order contracts. In addition to full-service traditional design services, we offer design/build and other alternative delivery methodologies and are ISO-9001:2015 compliant. Our Federal practice has been a vital part of our core business for 40 years.

We operate with strong project manager-led teams, and well-established project management policies and procedures. Hands-on principal-level project managers are well-versed in Federal procedures for documentation and control, and provide a single point of contact.



Our Mentor-Protégé Joint Venture



PROTÉGÉ OVERVIEW

CB Design Group is a full-service architecture firm specializing in the design of institutional, government, and other public projects with construction values up to \$100M. The firm was established with the mission of providing excellent service to our country, our communities, and our clients. In December 2015, CB Design Group was officially certified as a Service-Disabled Veteran Owned Small Business by the VA. CB Design Group is also proud to be a graduate of the Veteran's Institute for Procurement 2016 Certification Program.

CB Design Group has served as Prime and/or Architect on over 50 Federal Healthcare projects since inception in 2015



Some of our Federal Clients





**Bureau of Engraving and Printing
Currency Production Facility**



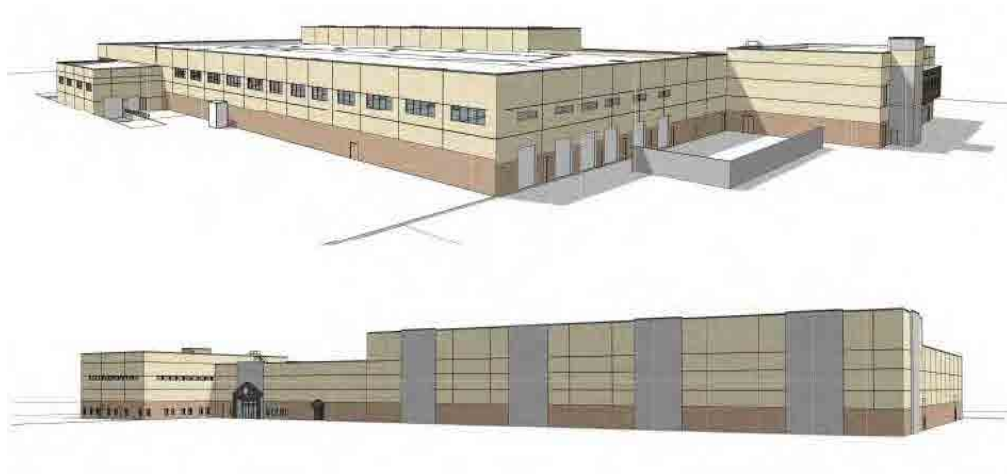
**NSWC Indian Head, Energetics
Comprehensive Modernization Plan**



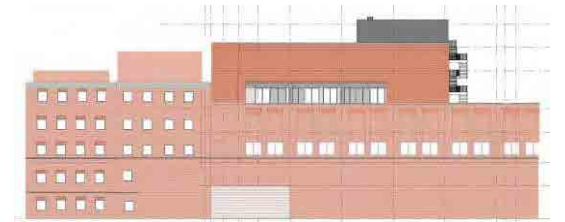
**Fort Liberty
Net-Zero UPH**



**Maneuver Systems Sustainment
Center (MSSC), Building 373
Dynamometer Facility**



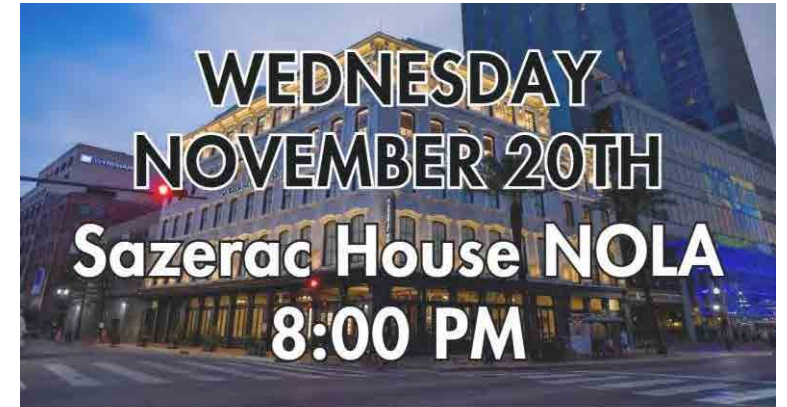
**F-35 Composite Repair and
Training Facility, Hill AFB**

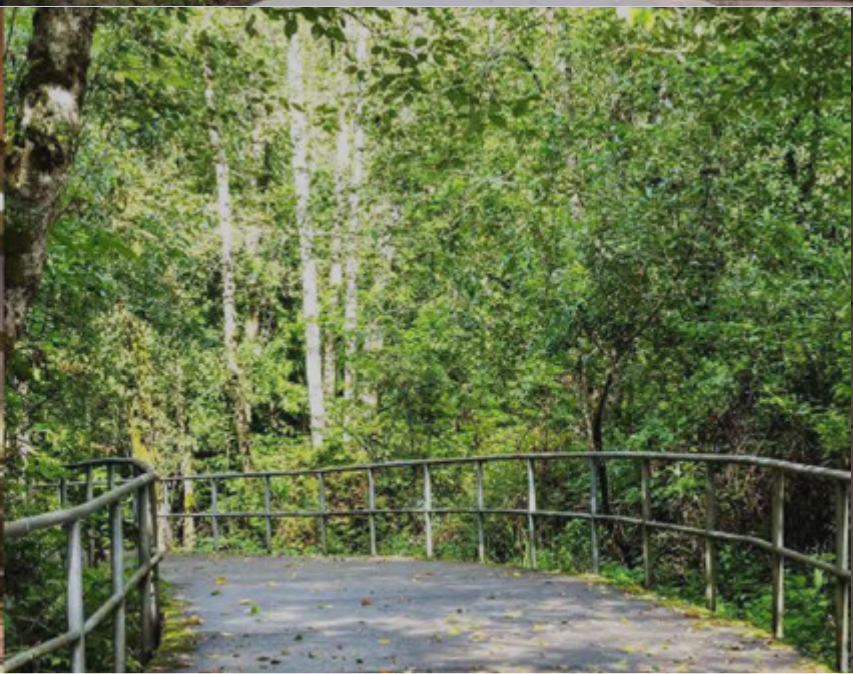
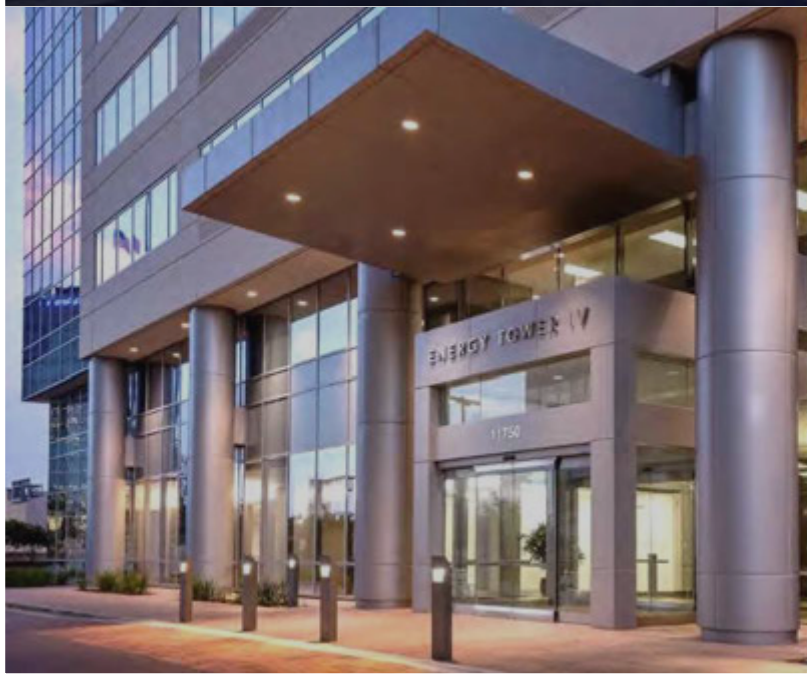


**Hampton VAMC
ICU and Pathology Addition**



Our involvement with SAME







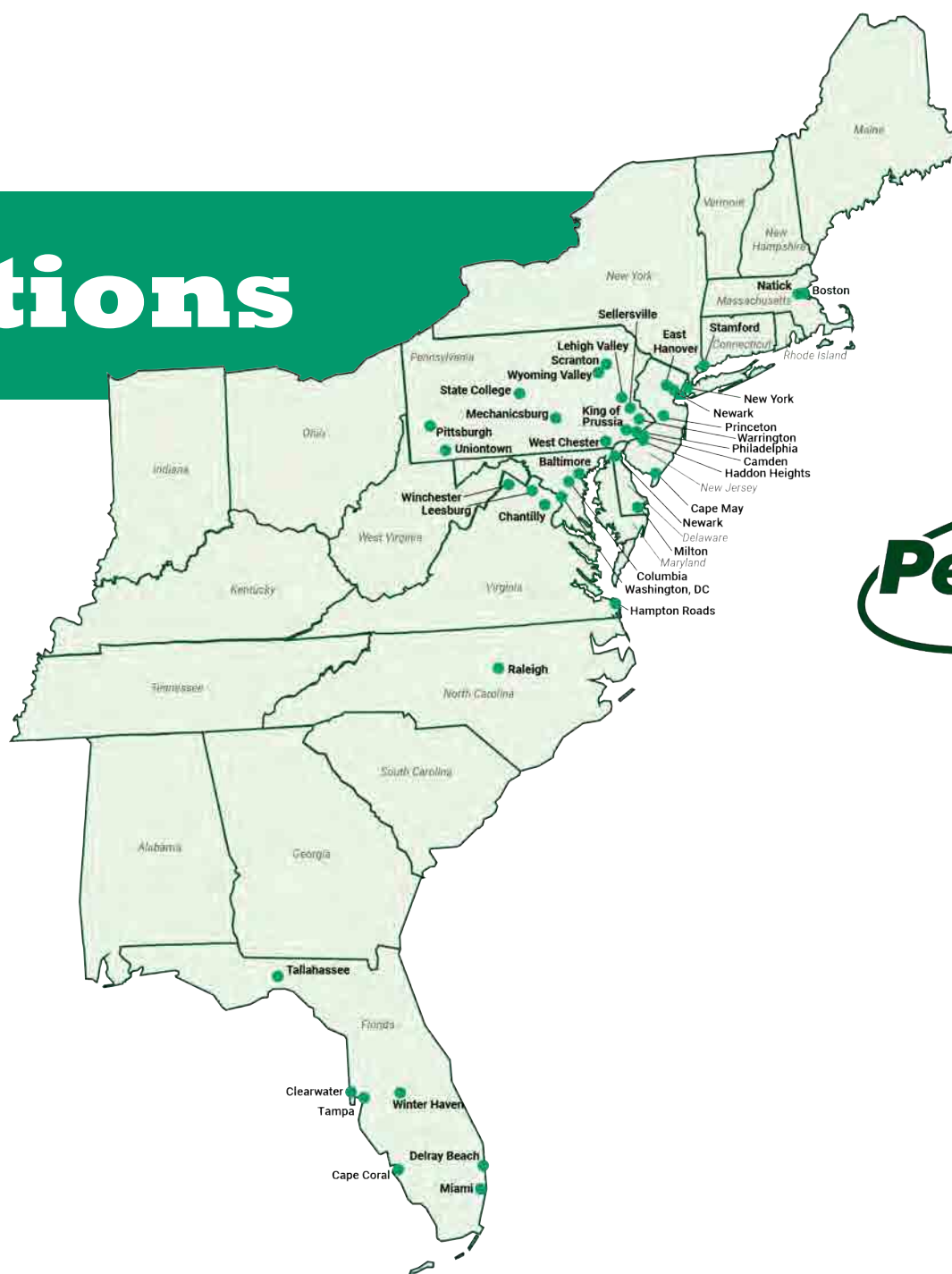
PARTNERS FOR WHAT'S POSSIBLE

Pennoni - Services

Multidisciplinary engineering & design firm



Office Locations



40+

*Offices
throughout the
Eastern US*

Pennoni Markets

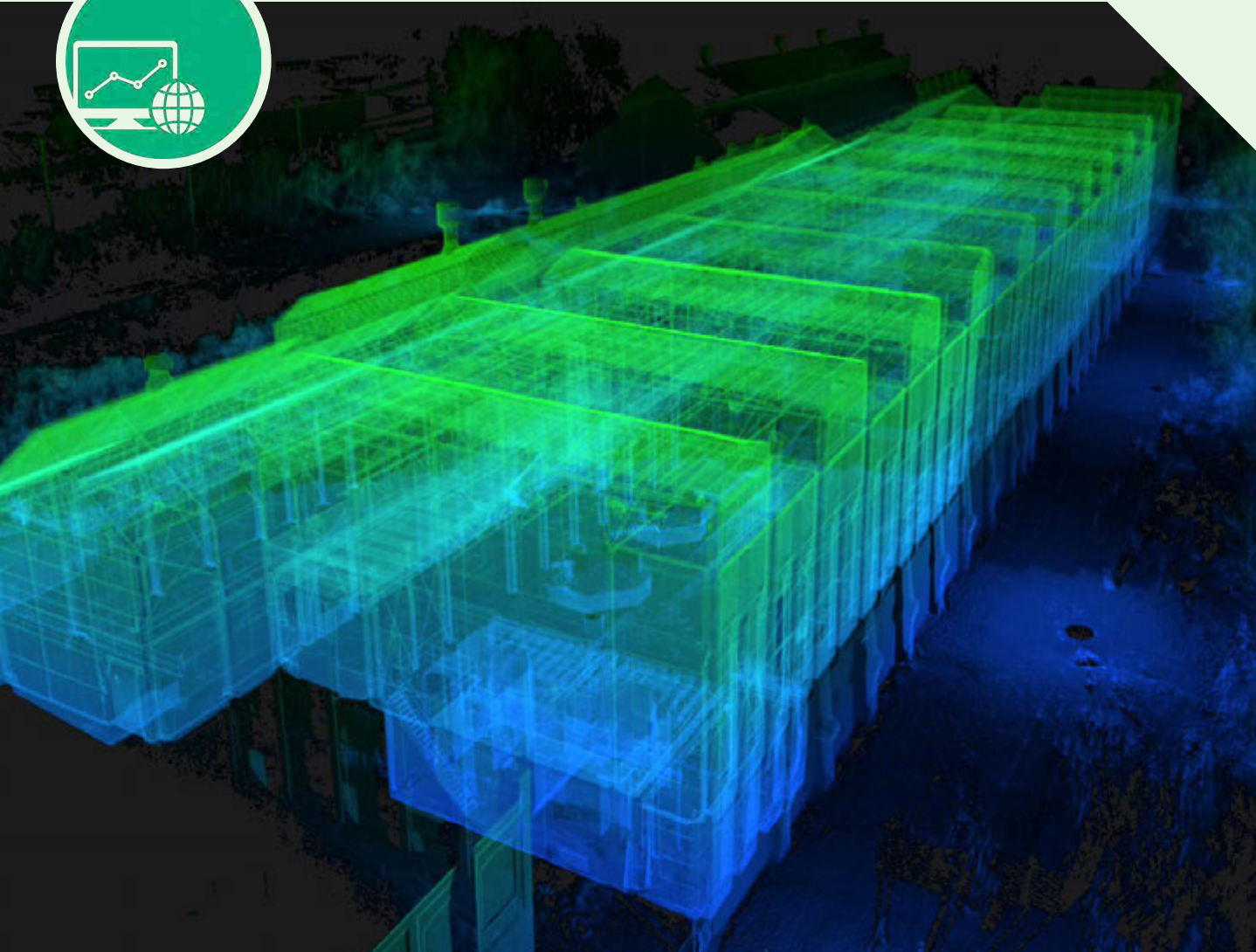
Multidisciplinary engineering & design firm

Markets

- ▶ Government (USACE – NAVFAC – GSA – USFS – NPS - VA)
- ▶ Commercial/Retail
- ▶ Education (K-12 and Higher Education)
- ▶ Energy – Utilities, Energy Management
- ▶ Healthcare & Life Sciences
- ▶ Industrial & Logistics
- ▶ Infrastructure
- ▶ Residential, Multi-Family & Commercial Development
- ▶ Dams and Waterways
- ▶ Renewable Energy – Solar – Wind
- ▶ Waterfront and Coastal Resiliency



Pennoni Digital Solutions



- ▶ Data Capture and Analysis
- ▶ Digital Modeling and Simulation
- ▶ Asset Management and Monitoring
- ▶ High Definition Laser Scanning
- ▶ Drone Fleet

Pennoni's Digital Solutions complements our comprehensive team of engineers, surveyors, scientists, and planners, focusing on information management and innovative analysis and visualization technologies.

Pennoni - Contacts

State/Local

Diana Milian

Email – DMILIAN@PENNONI.COM

Phone – 703-840-4982

Federal

John Thrower

Email – JTHROWER@PENNONI.COM

Phone – 703-344-6655



SAME Northern Virginia Post B2B Engagement

MERRICK & COMPANY

SOLVING. GROWING. LIVING.

October 10, 2024

Nick Desport, RA, LEED AP BD+C, F.SAME

Director of Business Development

Nick.Desport@Merrick.com



www.merrick.com



MERRICK BY THE NUMBERS



FOUNDED
in **1955**



EMPLOYEES
1000+

26
OFFICES in

4
COUNTRIES

80% 
of clients are
**REPEAT
CUSTOMERS**



7
CONTINENTS
worked on



ENERGY

OIL & GAS

INDUSTRIAL BIOTECHNOLOGY

POWER

PROCESS & INDUSTRIAL



NATIONAL SECURITY

DEPARTMENT OF DEFENSE

NUCLEAR

AEROSPACE



LIFE SCIENCES

GOVERNMENT

UNIVERSITY

PRIVATE INDUSTRY

BIOSAFETY & BIOSECURITY



INFRASTRUCTURE

WATER

TRANSPORTATION

LAND DEVELOPMENT

WHITEWATER



A/E SERVICES

Infrastructure Master Planning
Facilities Programming & Planning
Conceptual/Final Design
Construction Management
Design-Build
Commissioning
Operations & Maintenance
Survey



A/E SERVICES

Architectural
Interiors
Landscape Architecture
Civil
Structural
Mechanical HVAC
Fire Protection
Plumbing
Electrical
Communications



OTHER OFFERINGS

1391 Development
BLK 360
CREO Modeling
HEMP Studies & Enclosure Design
Power Transmission & Distribution
Infrastructure
Secure Facility Design /
Security Clearance
Sustainability

NATIONAL SECURITY WHAT WE OFFER

AIRMEN TRAINING COMPLEX

JBSA LACKLAND AFB, TX

 Air Force Design Award



“At Lackland, Merrick is the provider of choice.” - Project Manager, Lackland AFB

KC-46A BEDDOWN HANGARS

ALTUS AFB, OK
MCCONNELL AFB, KS
JBMDL, NJ
TINKER AFB, OK



ELLSWORTH AFB, SD

B-21 Bed Down Facilities

USACE OMAHA DISTRICT



Formal Training Unit Facility



Flight Simulator Facility



Field Detachment Facility

LAUGHLIN AFB, TX

VANCE AFB, OK

T-7 Bed Down Facilities

USACE FT WORTH DISTRICT



Unit Maintenance Training Facility



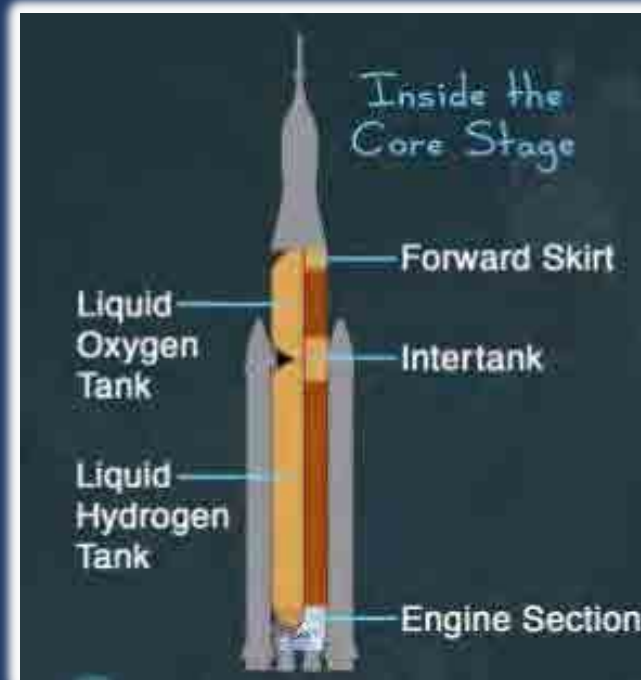
Ground Base Training System Facility



Marshall Space Flight Center, Alabama Space Launch System (SLS) Liquid Hydrogen Tank & Liquid Oxygen Tank Test Stand

LH2 TEST STAND: 221' TALL x 115' WIDE

LOx TEST STAND: 97' TALL



**EMERGENCY
OPERATIONS
CENTER**

**JOHNSON SPACE
CENTER, TX**







**NATIONAL BIO AND AGRO-DEFENSE FACILITY
MANHATTAN, KS**



ANTARCTICA

McMurdo Station, Palmer and South Pole Stations

CORE Facility ~\$400M

Facility Upgrades and Science Support



Front Range

NATIONAL DEFENSE, A-E SERVICES

Key Features

- A-E services for all Front Range military installations
- DoD and other agency clearances
- A-E services for all facility types: headquarters, data centers, SCIFs, hangars, air traffic control towers, training ranges, dormitory and dining facilities, etc.



USAFA Planetarium Renovation
USAFA, CO



Air Force Space Command / Space Force
Headquarters Renovation
Peterson AFB, CO



Army Space & Missile Defense Command
/ Army Forces Strategic Command
Peterson AFB, CO



Leadership Development Center
Buckley AFB, CO



OPPORTUNITIES

- **Teaming Partners-Large/Small**
- **Lasting Partnerships**
- **Opportunities to Grow**
- **New Geographic Opportunities**

Multiple Joint Ventures Including:

SOL-Merrick (HUBZone) M-P JV

Blair Remy-Merrick (SB) M-P JV

Merrick-Freese & Nichols JV

COPLAN-Merrick JV

Merrick-RS&H JV

OTIE-Merrick JV

Merrick-IMEG JV

30+ Prime Contracts Including:

AFCEC Pool 3

AFCEC Pool 4

CEHNC Huntsville

NASA

USAFA

NAVFAC SE

USACE Europe

USACE Japan

USACE Ft. Worth

USACE Kansas City

USACE Memphis

USACE Mobile

USACE Savannah

USACE Tulsa

Thank You!

Nick Desport, RA, LEED AP BD+C, F.SAME
Nick.Desport@Merrick.com

CONFIDENTIAL AND PROPRIETARY - © Eurofins Scientific (Ireland) Ltd, 2021. All rights reserved. This document contains information that is confidential and proprietary to Eurofins Scientific SE and / or its affiliates and is solely for the use of the personnel of Eurofins Scientific SE and all its affiliates. No part of it may be used, circulated, quoted, or reproduced for distribution outside companies belonging to the Eurofins Group. If you are not the intended recipient of this document, you are hereby notified that the use, circulation, quoting, or reproducing of this document is strictly prohibited and may be unlawful. Photo images on this page are the copyrighted property of 123RF Limited.



Eurofins Lancaster Laboratory – Environment Analytical Testing offering to support Architect Engineers/Government/Industry

www.eurofins.com



Where we are



Data correct as of December 2022

For more information about our locations across the world visit: www.eurofins.com/contact-us/worldwide-interactive-map/






What we do



ACTIVE WHEREVER TESTING CAN PROTECT LIFE

-  ENVIRONMENT TESTING
-  FOOD AND FEED TESTING
-  BIOPHARMA SERVICES
-  AGRO TESTING
-  CLINICAL DIAGNOSTICS

-  MATERIALS AND ENGINEERING SCIENCES
-  AGROSCIENCE SERVICES
-  GENOMIC SERVICES

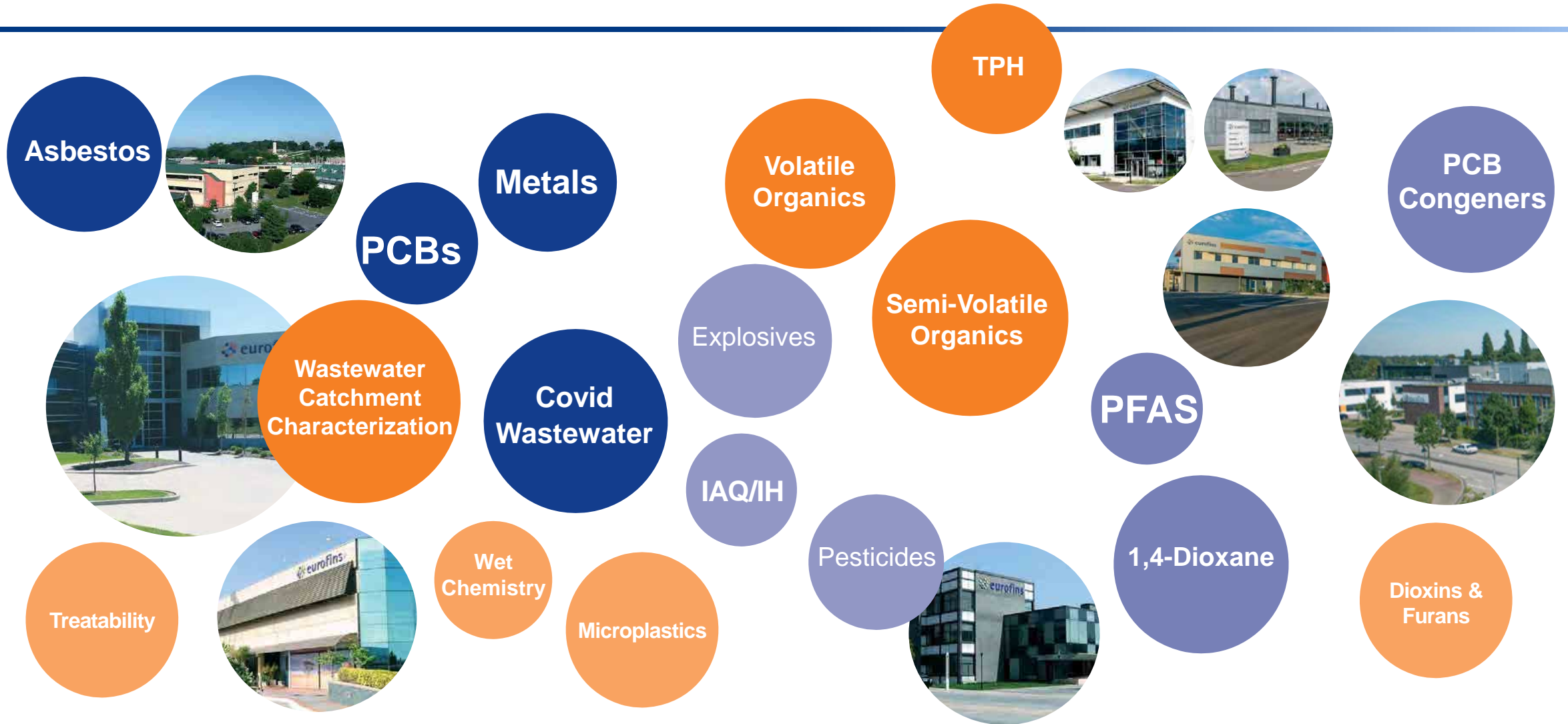
-  IN VITRO DIAGNOSTICS SOLUTIONS
-  COSMETICS TESTING
-  FORENSIC SERVICES
-  ASSURANCE
-  CONSUMER PRODUCT TESTING

Testing services for the following matrices.



- Soil (concrete and excavated materials)
- Water (stormwater, wastewater, and groundwater)
- Air (indoor)
- Industrial Hygiene – ACM, Legionella,
- Waste
- Products

Environment Testing Capabilities



As the largest PFAS laboratory network in North America, we specialize in research, innovation, and production.



- 23 years of PFAS analytical experience
- 6 PFAS Laboratories Nationwide
- 76 LC/MS/MS instruments dedicated to PFAS; 36 in Lancaster
- Dozens of matrices • Up to 100 compounds
- 40,000 samples analyzed monthly,
- More than 600,000 samples analyzed, several hundred PFAS for Arcadis on NS accident in OH
- Hanover, MD & VA Beach - Service Centers – courier and bottleware

Thank You!

Guy Sheets

717-803-1204

Guy.sheets@et.eurofinsUS.com



CPM SCHEDULE CONSULTING + TRAINING

SPECIALIZING IN MILITARY CONSTRUCTION



Specialized project controls team with track record of supporting multi-billion-dollar, mission-critical, and Mega Projects for U.S. agencies worldwide. We make sure your construction schedules are accurate, proactively identifying risks, and lowering your exposures to cost and time impacts.

CPM Schedule Analysis

Ensure your schedules are accurate, reliable, and contractually compliant.

Cost Analysis

Validate contractor cost proposals with estimating support for modifications.

Risk Management

Identify schedule and cost risks early to manage their impacts effectively.

Delay and Claim Analysis

Receive data-driven, objectively supported schedule analysis.

Expert Witness & Litigation Support

Get expert support for delay and cases before the ASBCA.

Schedule and Cost Trending

Track schedule, cost, and quality trends for stakeholder updates.

Integrated Master Scheduling

Use comprehensive tools to guide your team's key actions.

Construction Schedule Audits

Receive in-depth analysis for technical building constructability and compliance.

PAST PERFORMANCE INCLUDES



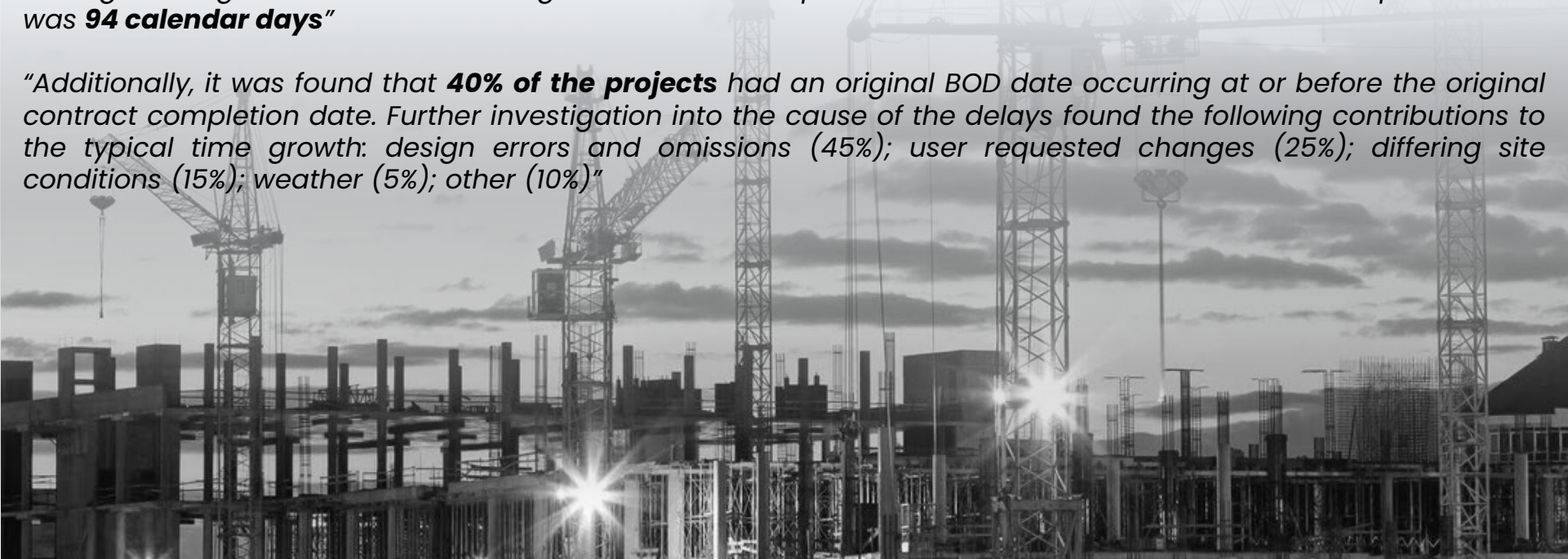
USACE Engineering and Construction Bulletin No. 2023-12 Dated: 24 Aug 2023

*"A review of MILCON projects completed in the past three fiscal years (FY2020, 2021 and 2022) found that a baseline **of 90 calendar days** was a realistic average for BOD time growth....."Project data analysis has shown that for MILCON projects, actual BOD is tracking an average of **130% of original contract duration.**"*

USACE Engineering and Construction Bulletin No. 2021-21 Dated: 23 Jul 2012

*"A HQ review of MILCON and BRAC projects achieving an actual Beneficial Occupancy date in FY 2011 found the average time growth between the original contract completion date and the actual contract completion date was **94 calendar days**"*

*"Additionally, it was found that **40% of the projects** had an original BOD date occurring at or before the original contract completion date. Further investigation into the cause of the delays found the following contributions to the typical time growth: design errors and omissions (45%); user requested changes (25%); differing site conditions (15%); weather (5%); other (10%)"*



CONTACT US

WEBSITE: WWW.CPM-SS.COM

PHONE: 443.907.7736



Diane Bragoni, RA, PSP, PMI-SP, PMP
Founder and Principal Consultant

Diane.Bragoni@cpm-ss.com



NICK BACKERT, Principal Consultant

Nick.Backert@cpm-ss.com





ALPHA
CORPORATION



- ◆ **CIVIL / STRUCTURAL ENGINEERING**
- ◆ **PROGRAM / CONSTRUCTION MANAGEMENT**
- ◆ **PROJECT CONTROLS**
- ◆ **TECHNOLOGY SERVICES**

www.alphacorporation.com

FIRM OVERVIEW

Alpha Corporation is an ENR award-winning multidisciplinary design and construction consulting firm providing:

- Program / Construction Management
- Project Controls
- Multidisciplinary Design

Founded in 1979, we lead projects and programs for federal clients worldwide.

Alpha is an SBA certified woman-owned small business.



OFFICE & PROJECT LOCATIONS – U.S.



OFFICE LOCATIONS

- α Dulles, Virginia
- α Baltimore, Maryland
- α Charleston, South Carolina
- α Miami, Florida
- α Virginia Beach, Virginia

PROJECT OFFICE

- α Kansas City, Missouri
- Representative Projects

OUR CLIENTS



General Services Administration



- Supporting GSA with CM and Design Services for 40+ Years
- Project Types Include Buildings, Utilities, Renovations, and New Construction on GSA Owned and Leased Properties
- Currently Servicing GSA through the Nationwide CM BPA and Regional A/E Design Contracts

National Park Service



- Supporting NPS for 30+ years Providing Multidisciplinary CM and Design Services Nationwide
- New Construction, Demolition and Renovation to Existing Facilities, including Historic Structure Rehabilitation and Adaptive Use

U.S. Department of State



- Provide Third-Party Construction Consulting on Projects Worldwide
- Independent Construction Cost Analysis and Estimates; Constructability Reviews; Detailed Construction Schedules; Risk Analysis; and Procurement

United States Army Corps of Engineers



- Supporting Various Districts with design and CM services for 20+ years
- Civil/Structural Design and multi-discipline CM services to support New Construction and SRM projects

CHARLES EVAN WHITTAKER COURTHOUSE FACADE REPLACEMENT



GSA, Region 6 | Heartland
Kansas City, Missouri

SPEED MANAGEMENT SAFETY STRATEGIES AT FEDERAL LAND MANAGEMENT GATEWAY LOCATIONS



**National Park Service
Nationwide**

HURRICANE SANDY REPAIRS AT JACOB RIIS PARK



National Park Service
Gateway National Recreation Area, New York

ENHANCED GATEWAY ARCH NATIONAL PARK



National Park Service
St. Louis, Missouri

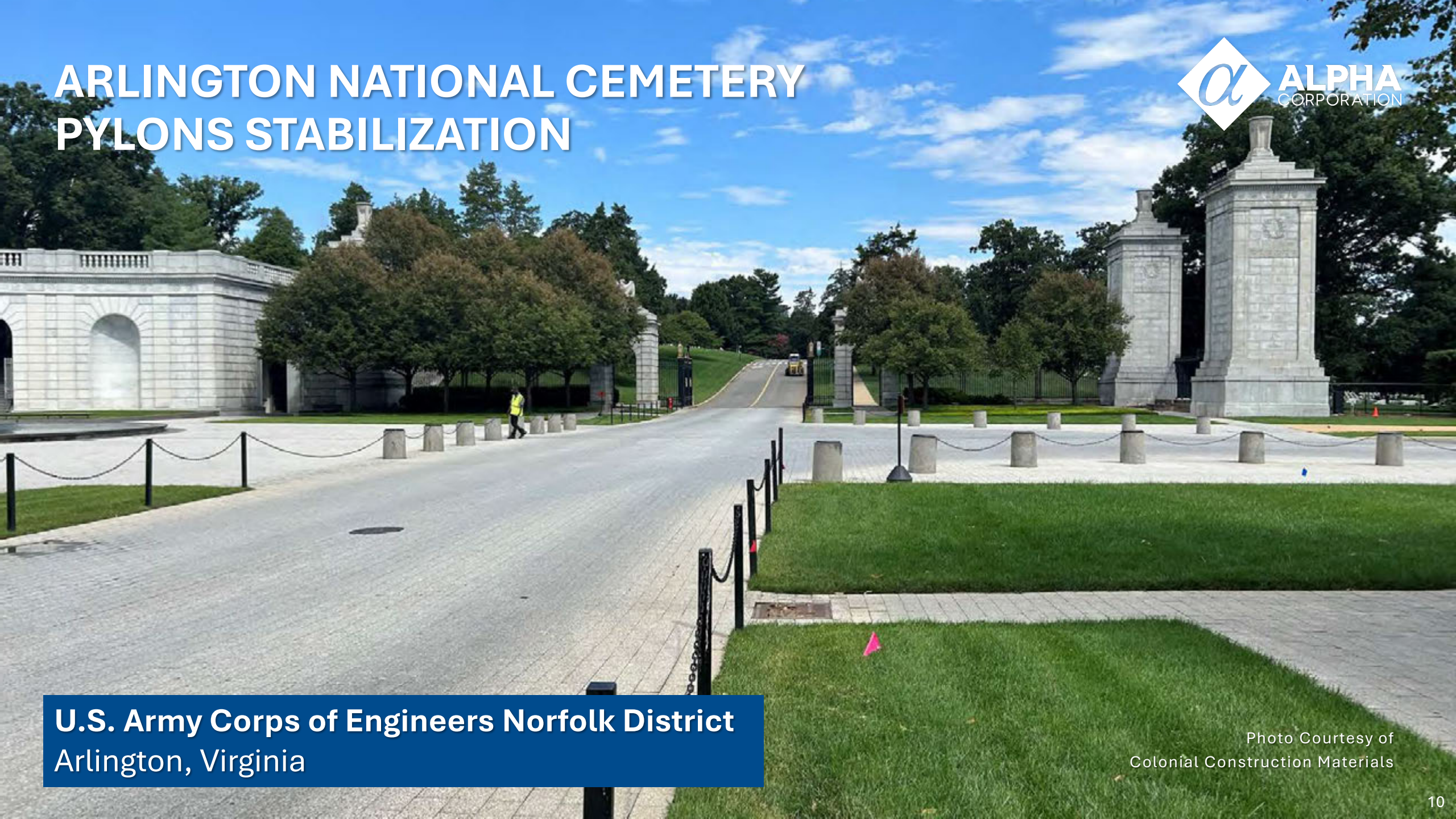
NEW EMBASSY COMPOUNDS



**Overseas Buildings Operations – US Department of State
Worldwide**

Rendering Courtesy of
Morphosis Architects

ARLINGTON NATIONAL CEMETERY PYLONS STABILIZATION



**U.S. Army Corps of Engineers Norfolk District
Arlington, Virginia**

Photo Courtesy of
Colonial Construction Materials

TEAMING PARTNERS?



ARCHITECTS



ENGINEERS



**CONTRACTORS FOR D/B OR
PRECONSTRUCTION**



**SMALL BUSINESS PARTNERS
(DBE, WOSB, SDVOSB)**



ALPHA
CORPORATION



CONTACT

Rachel Honderd, PMP

Senior Vice President, Alpha Corporation

Rachel.Honderd@alphacorporation.com

www.alphacorporation.com

BEAR LLC Intro

SPECIALIZED BUILDING ENVELOPE CONTRACTING COMPANY

SAME NoVA Post B2B Engagement

10 October 2024

National Museum of the US Army (Ft. Belvoir)

BEAR LLC

Building Envelope Assessment & Repair LLC



CAGE: 9CCW2

UEI: KUQQBBMBDTC5

LEADERSHIP



Casey Baker (CEO)

After spending 30 years with the U.S. Coast Guard holding numerous leadership positions, Casey spent 6 years as the Associate Chief Information Officer for business operations at the Medical University of South Carolina. In addition to being PMP certified, Casey holds a MS in Operations Research from the Georgia Institute of Technology, a Masters in Strategic Studies from U.S. Marine Corps War College, and a BS in Electrical Engineering from the U.S. Coast Guard Academy. She also was a Seminar XXI fellow at the Massachusetts Institute of Technology.



Bob Duke (COO)

Bob Duke has performed in various capacities of industry leadership for almost two decades in both the SPF and energy efficiency industries. Bob served the Spray Polyurethane Foam Alliance (SPFA) on several committees, progressed to a member of the Board of Directors, and then President of that organization from 2012 – 2014, during one of the industry's most evolutionary times. Bob is Air Barrier Association of America (ABAA) Certified, is former Chairman of the Existing Building committee, and a long-time instructor with ABAA.



Kurt Riesenberg (BD)

Kurt is former Executive Director of the Spray Polyurethane Foam Alliance (SPFA), the premiere nonprofit trade association in the United States representing high performance SPF. He worked directly with multiple federal agencies to assure the safe and effective use of SPF. He's served multiple industries as an agent of market transformation, holding key leadership management positions in the nonprofit sector. His innovation and impact in those strategic roles resulted in expansion of distributed and alternative energy technologies, lighting market shift to LEDs, and the emergence of net-zero high-performance buildings.

BUILDINGS ARE IMPORTANT



*We're transforming
federal buildings for
the future, to make the
federal footprint more
sustainable and cost-
effective for taxpayers*



Why Optimize Building Efficiency

Buildings are responsible for 40% of total energy use in the United States, including 75% of all electricity use and 35% of the nation's carbon emissions.

- NREL 9/23

“Improving the energy performance of the opaque envelope in U.S. buildings is key to achieving aggressive climate goals...”

Opaque Wall: comprises all elements of the building envelope besides windows, such as walls, roofs, and foundations, and affects 28% of building energy use, or 11% of total U.S. primary energy use.

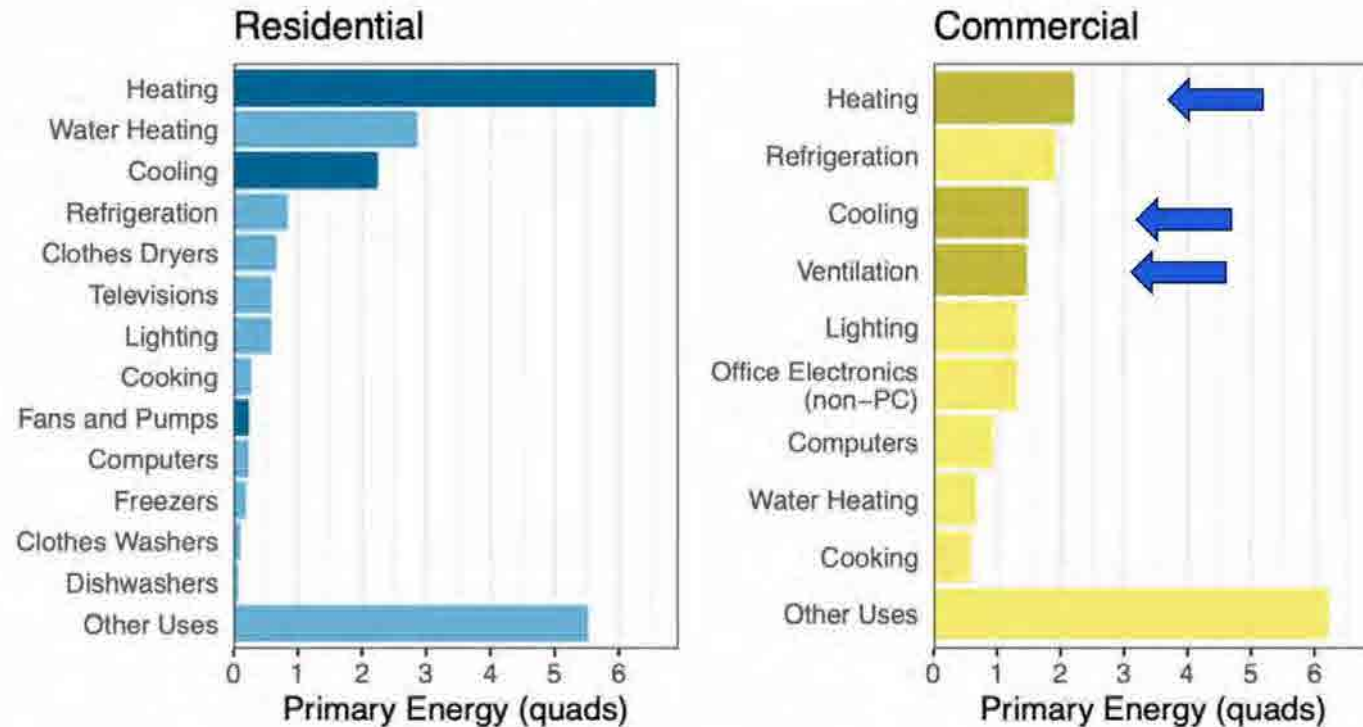
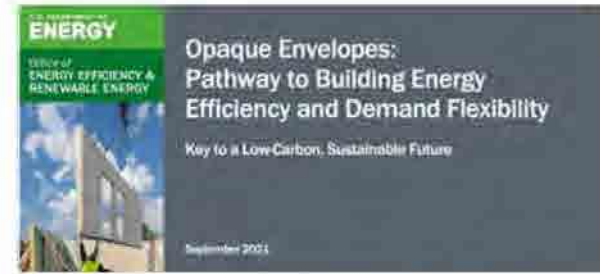


Figure 2. Apart from “other uses” in commercial buildings, heating is the largest single end-use contributor to total primary energy use in both residential and commercial buildings. When all space conditioning-related end uses—heating, cooling, fans and pumps, and ventilation—are taken together, they represent significantly more energy than any other end use. Highlighted with darker bars, these end uses represent the energy that can be reduced with performance improvements in opaque envelope components.

Data from the EIA 2021 Annual Energy Outlook [1].

Further According to the DoE Report:

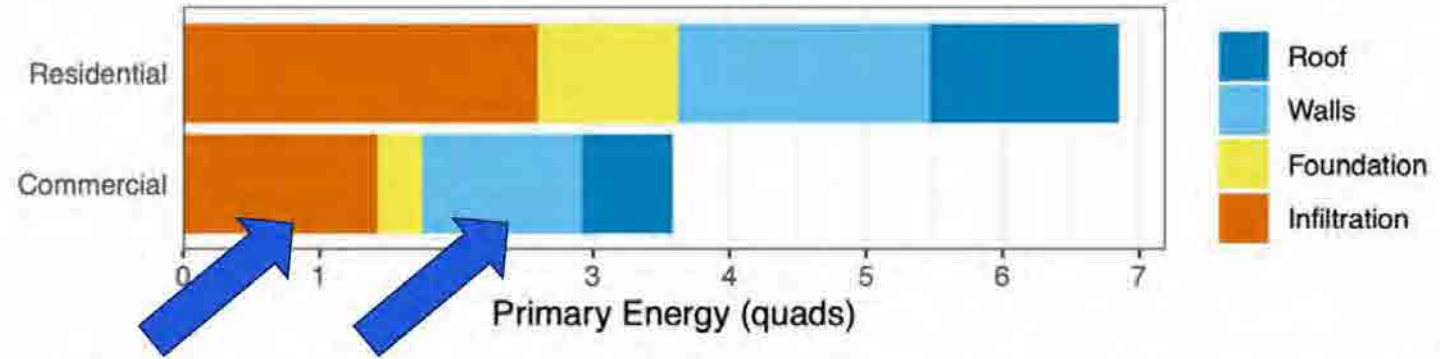


Figure 3. The breakdown of energy use by building envelope component in residential and commercial buildings during the heating and cooling seasons shows that the opaque envelope is the largest contributor to envelope-related energy use, followed by air leakage (infiltration and exfiltration).

Data from Langevin et al. [2] and the EIA 2021 Annual Energy Outlook [1].

- **As shown in Figure 3, air leakage accounts for greater energy losses than any other component of the building envelope** and is responsible for more than 4% of all the energy used in the United States. Technologies and construction methods are readily available in the market to build new buildings that have minimal air leakage.
- Retrofits of existing buildings are particularly crucial to opaque envelope energy savings because nearly 93% of residential and **60% of commercial buildings that exist today will still exist in 2050.**

DoE Clean Energy Building Rule 4/24

Electrification will drive emissions reductions and increase needs for efficiency

-[Doe Clean Energy Building Rule Page](#)

-[FEMP Clean Energy Building Rule Page](#)

-[Federal Register](#)



2024 DoE Clean Energy Building Rule

Federally Mandated Building Energy Efficiency

24 April 2024: DoE Final Clean Energy Rule:

- As required by Congress, DoE finalized standards that decrease emissions (decarbonize) for new and renovated federal buildings through the [Clean Energy for New Federal Buildings and Major Renovations of Federal Buildings Rule](#)
- This Rule implements the Energy Independence and Security Act (EISA) of 2007, requires federal agencies to phase out fossil fuel usage in major renovation and new federal building construction by achieving a 90% reduction in fossil fuel use for new projects started between fiscal years 2025 and 2029 and completely eliminating on-site fossil fuel usage in new projects beginning in 2030*
- * Scope 1 emissions
- "Major renovations" applies both to whole building retrofits as well as multiple minor renovations that occur in phases on the same federal building if the overall renovation meets the cost thresholds*

*The DoE rule also acknowledged the possibility of federal agencies breaking up major renovations into smaller pieces to circumvent the applicable cost thresholds and said it aims to discourage this practice

"President Biden has charged the Federal Government to lead by example by transforming its footprint of over 300,000 buildings to be more energy efficient and climate resilient..."

White House Council on Environmental Quality Chair Brenda Mallory



Cost Thresholds for FY 2024 (Million Dollars)

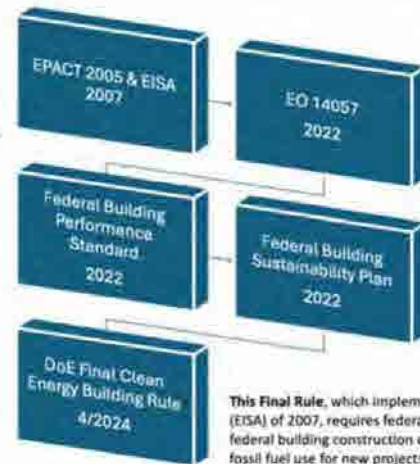
	FEDERAL BUILDINGS	NON-FEDERAL BUILDINGS
Construction or Major Renovation to Federally Owned Buildings	\$3.675	\$3.800
Major Renovation of Federally Leased Buildings	\$1.800	\$1.800



2024 DoE Clean Energy Building Rule

Section 109 of the Energy Policy Act of 2005 directed DOE to establish revised federal building energy efficiency performance standards. The Clean Energy Rule is a federal regulation required by section 433(a) of EISA 2007 directing certain federal new construction and major renovation projects to reduce or eliminate their on-site (scope 1) fossil fuel-based energy consumption.

The Federal Building Performance Standard requires agencies to cut energy use (via deep energy retrofits) and electrify equipment and appliances to achieve zero scope 1 emissions in 30 percent of the building space owned by the Federal government by square footage by 2030.

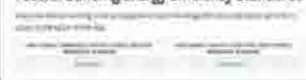


E.O. 14057 establishes a policy that the Federal Government will lead by example to help transition the Nation to a net-zero emissions economy by 2050 by setting ambitious government-wide goals for a 65 percent reduction in scope 1 and 2 GHG emissions by 2030 from 2008 levels and achieving net-zero emissions procurement.

The Federal Sustainability Plan sets out a range of ambitious goals to deliver an emissions reduction pathway consistent with President Biden's goal of reducing U.S. greenhouse gas emissions by 50-52 percent from 2005 levels by 2030.

This Final Rule, which implements the Energy Independence and Security Act (EISA) of 2007, requires federal agencies to phase out fossil fuel usage in new federal building construction or major renovation by achieving a 90% reduction in fossil fuel use for new projects started between fiscal years 2025 and 2029 and completely eliminating on-site fossil fuel usage in new projects beginning in 2030.

Federal Building Energy Efficiency Standards



"We're really pushing on efficiency first. Looking at deep energy retrofits, increasing your energy efficiency, which will help and eventually pay for or reduce your costs for your energy rule electrification. We are looking at that high level strategy of: **Do your efficiency first.** We can't stress that enough - reduce that facility load to support the next steps of electrification."

— Rick Mears, DoE FEMP PM
SAME DC Post Climate Resiliency & Electric Infrastructure Event
25 Jul 2024

BEAR CORE SERVICES

BUILDING ENVELOPE EFFICIENCY AND RESILIENCY SOLUTIONS



BEAR CONSTRUCTION SERVICES OPTIMIZE BUILDING ENVELOPE EFFICIENCY

Weatherize

- Weatherstrip & Seal (Caulk) Fenestration
- Weatherize or Replace Windows

Insulate

- Spray Polyurethane Foam

Air-Seal

- Fluid-Applied Air/Vapor Barriers on Building Envelope

Existing Building Envelope Efficiency Audits

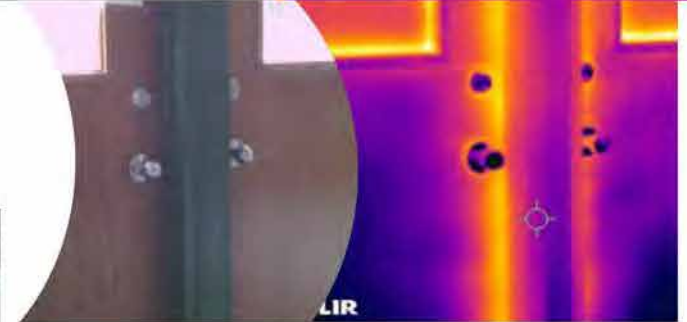
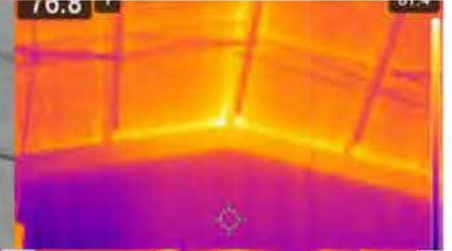
- Investment Grade Audit
- Report IDs Critical Fixes



BUILDING ENVELOPE PERFORMANCE AUDIT & REPORT

(Existing Buildings)

- Identifies the sneaky problems that add up, and a roadmap (report) to repair
- Identifies where the BE energy leaks are located – Lots of Holes in the envelope
- Identifies how big the hole is – One Big Hole expressed as ELA (Estimated Leakage Area)
- Estimates the savings gained by plugging the hole & ROI for the work identified in the audit
- Provides specifications for the materials required to plug the holes
- BEAR's in-house auditor >80M sqft



SPRAYFOAM INSULATION

- High R-Value (R6+/in)
- Air/Vapor Barrier in 1 product
- Increased racking strength
- Extremely durable & lightweight
- Conforms to any geometry
- Mobile installation
- Meets all building & fire code
- FEMA Class 5 flood damage resistant building material
- Industry model LCA (.5 LEED credit) & Mfg LCAs available



Image Credit: [Roofing Magazine](#)



Image Credit: [NBC News](#)



Image Credit: [Lynch Mechanical](#)
<http://www.lynchmech.com/news/2015/07/15/foam-insulation/>



Image Credit: [Falcon Structures](#)
<http://www.falconstruct.com/news/2015/07/15/foam-insulation-shipment/>



FLUID-APPLIED AIR & VAPOR BARRIER

An air barrier system is an essential component of the building enclosure so that air pressure relationships within the building can be controlled, building HVAC systems can perform as intended, and the occupants can enjoy good indoor air quality and a comfortable environment.

– [WBDG / Wagdy Anis](#)

- Spray, roll- or brush-applied, one-component, rubberized membrane that provides an air barrier when applied to a range of construction surfaces
- Low temperature application down to 20°F (-6°C) with no additives required
- Fast, seamless, vapor permeable or impermeable elastomeric membrane for above grade walls
- Excellent adhesion to most construction surfaces such as exterior gypsum boards, CMU, concrete, stone, wood and metal
- Can be applied to damp concrete
- Protects assets during extended exposure during construction
- Meets all ABAA specs and inspection requirements in your bid package
- We do not use peel & stick air barrier membranes due to complications of labor-intensive install and increased potential failure points



SAMPLE PROJECTS

Highlighting BEAR's Core Capabilities



Dyess AFB (BEAR PRIME)



USDA (BEAR PRIME)



Dyess AFB

Abilene, TX

2Lbs/CF Closed Cell Sprayfoam

3.5" = R23 Sprayed

Installed and inspected to ensure consistent spray foam thickness to meet SOW requirements

Removed any significant overspray per RFI response

Installed textured aluminum faced panels onto gable end vents



USDA ARS Conservation and

Production Research Lab

Bushland, TX

2Lbs/CF Closed Cell Sprayfoam

3" = R20 Sprayed

Installed and inspected to ensure consistent spray foam thickness to meet SOW requirements

Reinstall ceiling tile and any batt insulation

Conduct final walkthrough with owner's representative

Remove and dispose of all masking and clean site





UNIVERSITY FACILITIES

Clemson University

Green Tiger One ESPC



Clemson University Clemson, SC



GT1 is an ESPC partnership between Clemson University and Johnson Controls, Inc. The project is designed to promote long-term sustainability, lessen the University's environmental footprint, and dramatically reduce campus utility costs. BEAR conducted a full BEP Audit and is now removing and replacing the existing failing weather stripping, seals, caulking material, and doors/accessories across the campus.

Work Performed (ongoing):

Full Building Envelope Performance Audit and Report

2100+ doors repaired or replaced
10k+ linear feet of caulk
Spot-sealing

3. JORDAN HALL:
Property Address: 130 Delta Epsilon Ct., Clemson, SC 29634

3.1 General Description:
Jordan Hall is an approximately 500,000 square foot facility located on the University Campus. Construction was completed in 1976 and previously housed the Department of Biological Sciences and an auditorium space utilized by the Department of Biological Sciences. The building was added to provide additional instructional space as well as a Department of Computer Sciences. A greenhouse and visit animal facility is located on the fourth floor and is accessed via the fourth floor.

3.2 Building Envelope Inspection and Evaluation
3.2a Plan Review
Jordan Hall - West Elevation
The general structure of the building is constructed using a reinforced concrete-frame system.

Storefront/Commercial Windows
Currently the single pane thermally unbroken windows are allowing for air/moisture to penetrate, as well as outside temperatures to conduct through the frames. On the day of the inspection, the outside temperatures were producing interior window temperature readings in the 40's.

Doors
All the entry doors into the school have worn weather-stripping or the weather-stripping is missing.

Figure 3.15 is capturing the air-leakage resulting from deteriorating seals. Recommended that all Exit doors receive new weather-stripping and bottom seals to prevent the flow of unwanted air.

Figure 3.16 IR image is capturing the air-leakage resulting from no weather-stripping on the stairwell door. The conditions of the stairwells aren't similar to the hallway should be compartmentalized from the rest of the building. Recommend adding weather-stripping and bottom seals to all stairwell doors.

Figure 3.23 is showing the loss of thermal protection due to these outdated thermally unbroken frames. All the windows are reading a delta of -18 degrees when compared to the thermostats set points. Recommend new R-19 thermal walls with high efficiency windows OR complete replacement of broken dual pane low-e storefront windows (like for like style).

The interior inspection determined that the exterior unconditioned air is migrating into the interior conditioned space through abandoned vents, exterior wall penetrations and gaps between roof decking and exterior wall.

Figure 4.17 IR image shows the gap is affecting the interior temperatures above the door ceiling.

Figure 4.18 shows the effect of these abandoned vents, recommend sealing the vent to stop the loss of conditioned air.

EXIT DOORS (NO WEATHER STRIPPING)
All the entry doors into the school have worn weather-stripping or the weather-stripping is missing. Many halls have their own temperature controls and at the exhaust fans, compartmentalizing them from the common hall by applying weather-stripping is recommended.

COBWEBB indicates the air is moving around the door and the weather-stripping ISN'T continuous.

Mark Center (BRAC133)

Mark Center (BRAC133) Alexandria, VA

2Lbs/CF Closed Cell Spray Foam
>1.8M sqft

Prime: Clark Construction
DoD Contractor: USACE, NY
District

The multiple awards and LEED Gold certification were a result of sustainable construction practices incorporating green features into the final product.

The building's two office towers (15, 17 stories) use 30% less energy than a traditional building thanks in large part to the high-performance building envelope.



*Bob Duke, Principal
Past Performance



INNOVATIVE PRODUCTS





NEW: GAMMA GUARD™

PASSIVE RADIATION
SHIELDING HIGH
DENSITY
POLYURETHANE
FOAM

- Gamma Guard™ radiation shielding technologies provide multi-level primary and secondary Neutron, Gamma, Alpha, Beta and X-Ray radiation shielding
- Proprietary formula, manufacture and installation process
- Suspended high-Z combo aggregate in the foam
- Lead: 708 #/CuFt
- Gamma Guard: 8 #/CuFt
- Serves both mobile and site applications
- Versatile pour and spray versions

TARGET APPLICATIONS:

- Nuclear Waste Disposition
- Hospital Nuclear Medicine
- **Aerospace**
- Military



Testing at Hanford Nuclear Reservation



WE WANT TO
PRIME / TEAM
/ SUB / WORK
WITH...

Buildings

DoD All Branches

DoE

GSA

VA

NASA

DoS/OBO

ESCO / ESPC Team

CONUS/OCONUS

Prime small BE projects

Subcontract to Prime on BE portion of larger projects
(renovation/new construction)

Looking for a partnership on completion of specific
development for Gamma Guard™

THANK YOU!

KURT
RIESENBERG
BEAR BUSINESS DEVELOPMENT

202-860-5414 m
kurtr@bearenvelope.com

N. Charleston, SC
Washington, DC
www.bearenvelope.com



10.10.10 PRESENTATION

General MANUFACTURING FACILITY



WHAT WE DO

DELIVERING BEST IN CLASS
PROJECT SERVICES



PRECONSTRUCTION Project Development

- Real-Time Cost Feedback
- Constructability
- Risk Awareness and Management
- Early Procurement
- Owner/Contractor/Design Responsibility Matrix
- Lessons Learned Incorporation into Design
- Scheduling
- Value Add Opportunities



DESIGN ASSIST

- Constructability
- BIM/VDC Coordination
- Staging and Logistics Pre-Planning
- Prequalification Program
- Subcontractor Procurement & MWBE Process
 - Competitive Selection Process
 - MWBE Inclusion Program
 - Key Subcontractor Involvement following DD Phase



OPERATIONS

- Safety
- Submittal Management
- Drive the Schedule
- Subcontractor Management
- Quality Assurance & Control
- Owner Equipment Coordination
- Commissioning and Startup



Atlanta / Charleston / Charlotte / Dallas / Greenville / Raleigh / Savannah / Germany

INTERNATIONAL REACH



OFFICES

- 7 U.S.
- 1 European

PROJECT EXPERIENCE

- 135+ Cities Nationwide
- Prominence in Southeastern U.S.
- Coverage from coast-to-coast

Project Reference



BMW
Electric Vehicle Battery Plant
Woodruff, SC



General Dynamics
Electric Boat
Submarine Assembly Plant
Quonset Point, RI



Arglass
Glass Manufacturing Facility
Valdosta, GA



Pratt & Whitney
Engine Assembly/Testing Facility
Columbus, GA



Archer Aviation
Electric Aircraft Assembly Plant
Covington, GA



John Deere
Battery Manufacturing Campus
Kernersville, NC



6K Energy
Battery Material Manufacturing Facility
Jackson, TN



MTU-Rills Royce
Manufacturing Campus
Aiken, SC



e-VAC
Permanent Magnet Plant
Sumter, SC

THE EVANS ADVANTAGE

As a national/international design-build, general contracting, and construction management firm, Evans provides cost effective solutions and comprehensive project development to clients across a broad spectrum of markets. Whether the requirement is for a high-performance additive manufacturing plant, mission critical data center, or an ISO level cleanroom, they create solutions and provide turn-key facilities to some of the best minds and companies in their industries.

RELEVANT SERVICES

- **Project Development**
 - Concept Design
 - Concept Estimating
 - Concept Scheduling
- **Preconstruction and Design**
- **Building Construction**
- **Building Infrastructure and Critical Utilities**
- **Startup and Commissioning**
- **Equipment Installation**

WHY WORK WITH US?

- **Energy Efficiency Modeling and Design**
- **Heavy and Special Machinery Integration**
- **Speed to Market**
- **Cost Control**
- **Turnkey Services**

ADDITIONAL MARKET EXPERTISE





Nuclear Submarine Assembly Quonset, RI

Scope of Work:

- 200,000 SF Addition to existing assembly building
- 230' long spans, over 120' high
- Extensive electrical, process gas, and fume mitigation infrastructure



Gulfstream®
A GENERAL DYNAMICS COMPANY

Aircraft Assembly Plant Savannah, GA

Scope of Work:

- Since 2009 Evans continuously builds for Gulfstream Aerospace
- This includes: Offices, Assembly Buildings, Data Centers, R&D Test Facilities, Paint Shops, Fab Shops





Tier 1 Injection Molding Facility (Largest in the U.S.)

Tuscaloosa, AL

Scope of Work:

- 850,000 SF, 5 building project (2 guard houses, maintenance building, utility building, production facility)
 - Injection molding machines
 - 6x60 ton overhead cranes
 - Compressed air systems
 - QC lab
 - 80,000 SF robotic paint booth

Project Reference



MARKET CAPABILITIES



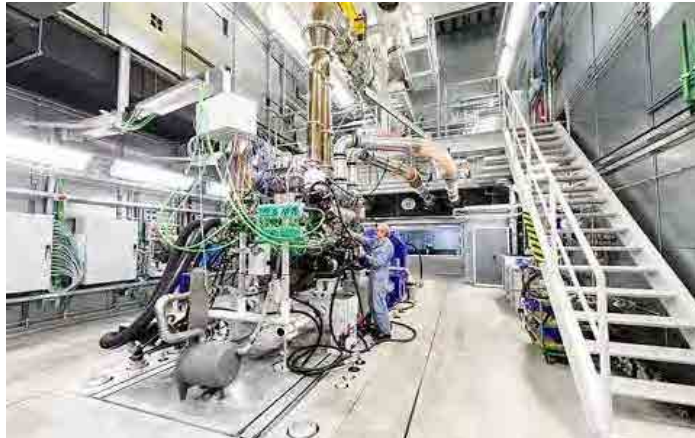
GIW® Minerals

Ductile Iron Casting
Grovetown, GA

Scope of Work:

- Multiple Building Design Build EPC Casting Campus
 - 125 Ton Bridge Cranes
 - Melting Hall
 - Casting Hall
 - Central Utility Plant
 - Electrical Substation

Project Reference



MARKET CAPABILITIES



Diesel Engine Assembly Plant Aiken, SC

Scope of Work

- Design Build Multiple Building Campus
 - Machining Hall
 - Assembly Hall
 - Development Test Cells
 - Fuel Farm
 - Wastewater Treatment
 - Corporate Office Building

Project Reference



MARKET CAPABILITIES

WACKER

Hyper Pure Poly Silicon

Charleston, TN

Scope of Work:

- Construction and equipment installation
 - Central Utility Plant
 - Hazardous materials warehouse
 - Fuel farm
 - Granulate Silos
 - Reactors

Project Reference



MARKET CAPABILITIES



Crankshaft Manufacturing

Tunica, MS

Scope of Work:

- Design Build Construction 168,000 SF
 - Compressed air
 - Chilled process water
 - Large scale reverse osmosis system
 - Cutting & Grinding oil systems (w/ 20 K sf oil filtration and recycling system)

Project Reference



MARKET CAPABILITIES



Turbo Fan Assembly & Testing Facility Columbus, GA

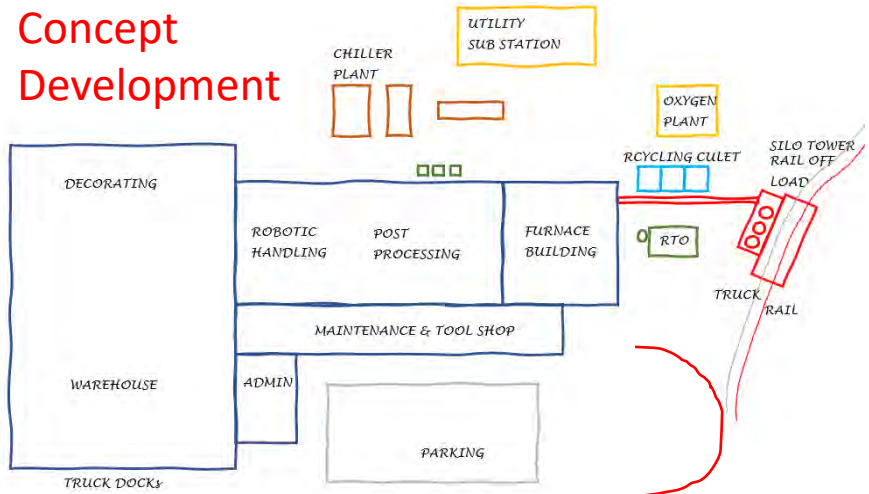
Scope of Work:

- Design Build, Multiple Building Campus
- Assembly Hall
- 10 m Turbo Fan Test Stand
- Fuel Farm
- Test prep facility
- BMS

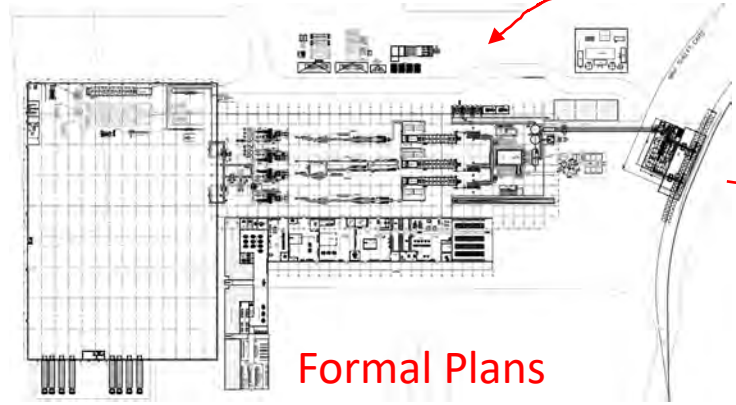
DESIGN CAPABILITIES

4D BUILDING INFORMATION MODELING (BIM) & EQUIPMENT INTEGRATION

Concept
Development



Integrated
BIM Model



Formal Plans



A modern office interior with glass walls and furniture. The scene is dimly lit, with light coming from the windows and ceiling fixtures. In the foreground, there is a brown sofa and a matching armchair. A glass coffee table with a bowl and a book is in front of the chair. In the background, there is a conference room with a table and chairs, and a reception desk on the right. The text "THANK YOU FOR YOUR CONSIDERATION" is overlaid in the center.

THANK YOU
FOR YOUR CONSIDERATION



Trust Is Built.

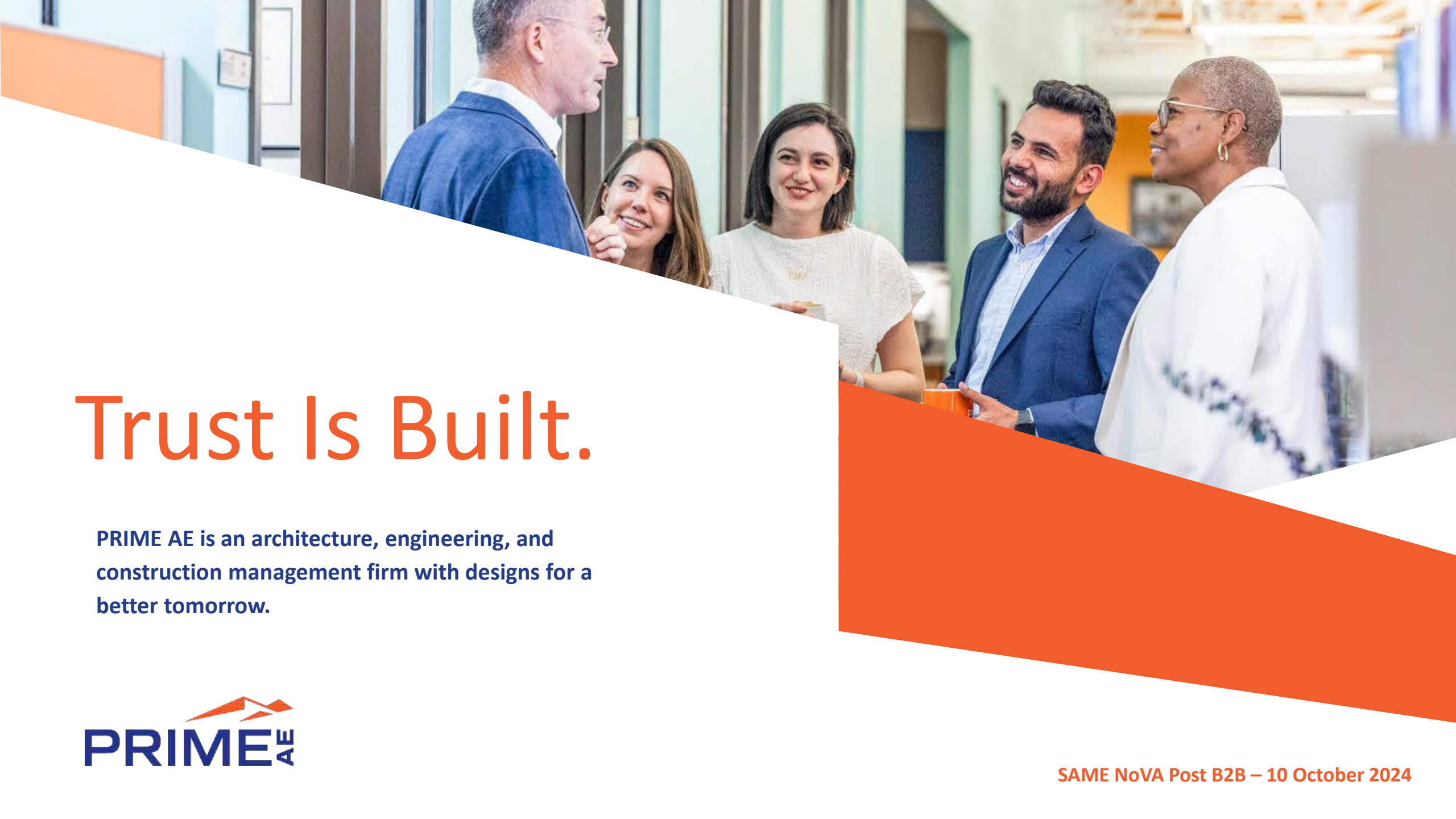
www.primeeng.com

SAME Northern Virginia Post

9th Annual Business-to-Business (B2B) Engagement

10 October 2024

Ed Chamberlayne, PE, PhD, F.SAME



Trust Is Built.

PRIME AE is an architecture, engineering, and construction management firm with designs for a better tomorrow.



Widespread Knowledge. Local Influence.

Community Starts Locally

Local presence, regional expertise, and national support.



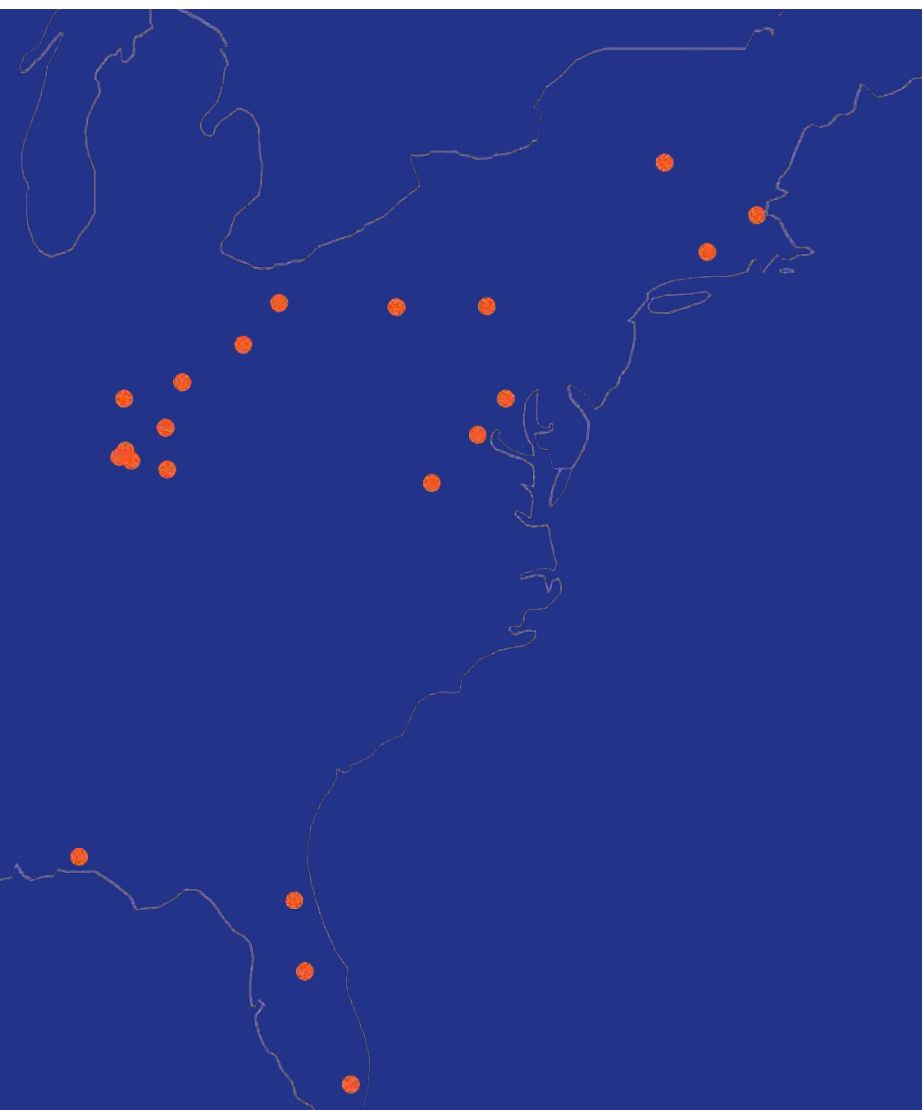
23
Offices



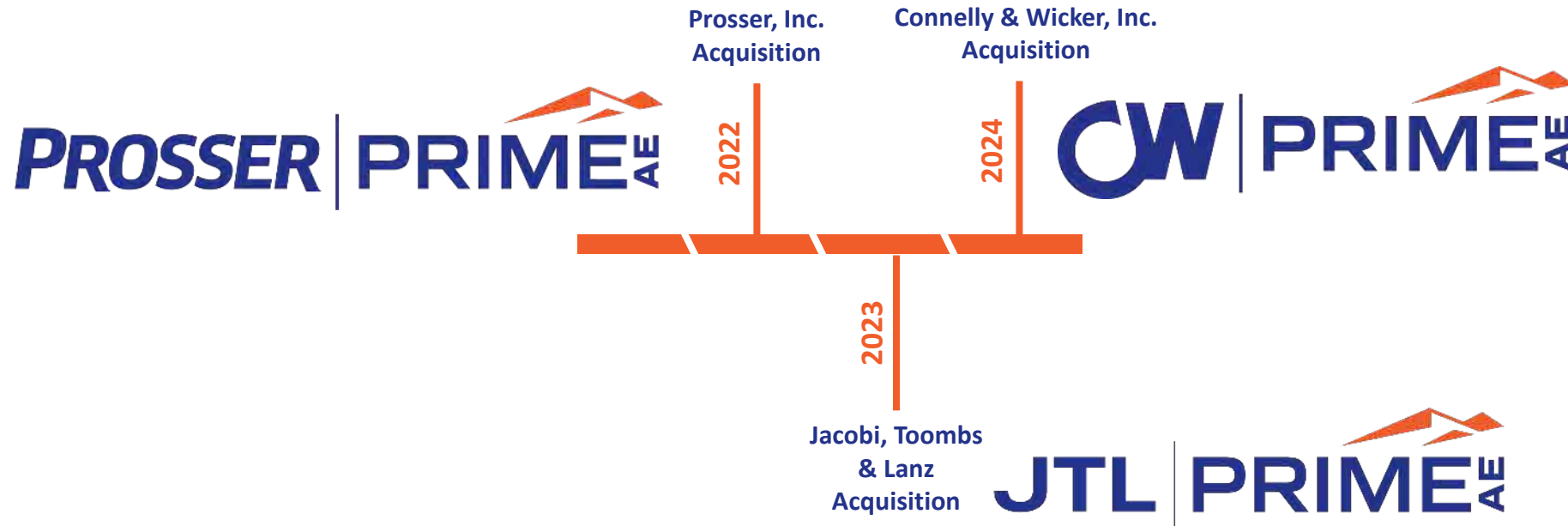
10
States



510+
Strong



Mergers and Acquisitions



Multi Disciplinary Firm. Balanced Portfolio.



Architecture



Engineering



Master
Planning



Federal



Transportation



Water



Landscape
Architecture



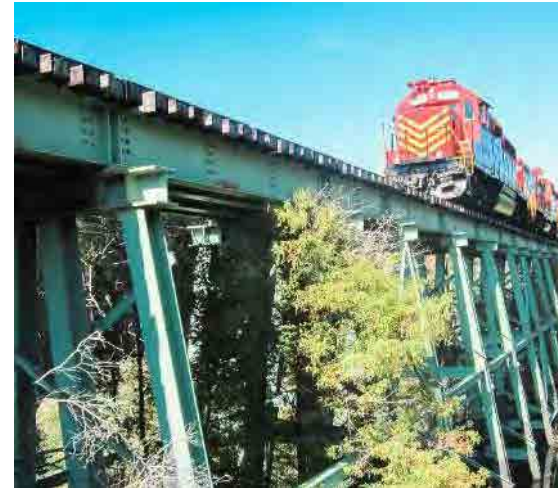
Construction
Management &
Inspection (CMCI)

Multi Disciplinary Firm. Balanced Portfolio.

Sector
Federal



SERVICES
Architecture
Bridge Design
Bridge Inspection, Load, & Rating Analysis
Building Envelope
Civil Engineering
Environmental Permits
GIS and Mapping
Interior Design
Landscape Architecture
Master Planning
MEP Engineering
Structural Engineering



Federal Clients

U.S. Army



WIN

- USACE Norfolk District
- USACE Baltimore District
- USACE Mobile District
- U.S. Army Engineering Center Huntsville
- USACE Vicksburg District
- USACE Charleston District
- USACE Jacksonville District
- USACE Fort Worth District
- USACE Tulsa District

U.S. Air Force



- AFCEC
- Air Mobility Command
- Air Force Materiel Command
- Air Force Reserve Command
- Eglin AFB
- Robins AFB
- Arnold Engineering Development Complex
- Scott AFB
- Malmstrom AFB

Federal Bureau of Prisons



- Mid-Atlantic Region
- UNICOR

Dept of Homeland Security



- Immigration & Customs Enforcement
- Customs & Border Protection
- FEMA

U.S. Navy



WIN

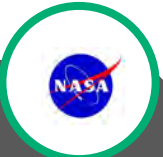
- NAVFAC Southeast
- NAVFAC EXWC
- NAVFAC Mid-Atlantic
- MARFORRES

Veterans Affairs



- National Cemetery Administration
- Veterans Health Administration

NASA



- Glenn Space Center
- Stennis Space Center

Representative Projects

Having successfully delivered hundreds of projects to federal agencies, our team is passionate about serving our nation to improve the operational environment and quality of life for those that advance the strategic interests of the United States at home and abroad.



NAVFAC SE – P-200 Nuclear Power Training Unit Simulator Facility
CHARLESTON, SC | Constr. Cost \$311M



USACE Mobile – F35 Squad Ops Bldg
Eglin AFB, FL | Constr. Cost \$25M+



USACE Norfolk – JBLE Dormitory
Joint Base Langley - Eustis, VA
Constr. Cost \$85M



NAVFAC SE – Installation Development Plan for CNRSE
NAS Joint Reserve Base New Orleans, LA

PRIME AE Rankings

Engineering News
Record (ENR)

Baltimore Business
Journal

-  **#229** Top 500 Design Firm
- #21** Top Design Firm in Transportation – Bridges
- #19** Top Design Firm in Environment – Water Treatment, Desalination Plants
- #17** Largest Architecture Firms in Greater Baltimore (Baltimore Business Journal)
- #77** Regional Design Firm – MidAtlantic
-  **#47** Regional Design Firm – Midwest
- #20** Regional Design Firm – Midwest by Sector – Structural
- #57** Regional Design Firm – New England
-  **#85** Regional Design Firm – Southeast

Mentor Protégé JVs



Perigee-PRIME AE SB JV23
WOSB & SDB



Hurst-Rosche PRIME AE HubZone JV
HUBZone & SDB



BKM PRIME AE SB JV
SB

Recent Recognition In Our Industry

- + ACEC National – MDOT Clayton Road Road I-95 Overpass Replacement, Joppatowne, MD
- + ACEC National – South Main Street Corridor, Akron, OH
- + SAME Northern Virginia Post – 2023 Sustaining Business of the Year
- + Greater Baltimore Committee – Leadership in Diversity Award for Bridging the Gap Achievement, Baltimore, MD
- + ACE Peer Choice Award – Route 34, New Haven, CT
- + ASHE Central Ohio – Peer Choice Award for Morse Road at Babbitt Road Roundabout Improvement, Columbus, OH
- + ACEC Indiana – Engineering Excellence Merit Award for Jeffersonville CSO Storage Interceptor, Jeffersonville, IN



Trust Is Built.

www.primeeng.com



Ed Chamberlayne, PE, PhD, F.SAME

ed.chamberlayne@primeeng.com

(540) 449-3062

<https://www.linkedin.com/in/edwardchamberlayne/>



TEYA

Capabilities Briefing
October 2024



WHAT WE DO



“We enrich lives and build sustainable communities for our employees and Native shareholders by partnering with our clients and teammates to deliver exceptional results that ensure mission success across our core competencies in manufacturing, construction, facilities maintenance, infrastructure, and professional services.”



TEYA SUPPORT SERVICE, LLC



RON PERRY
President
(Teya Support Services)



ANDY NEWTON
Operating Officer
(Teya Dev.)

Teya Support Services, LLC
101 E. 9th Avenue, Suite 9B, MS#05
Anchorage, Alaska 99501
UEI: UEDFCUYALXZ1 | CAGE: 8HK11 | 8(a) Graduation: 09/30/2029
www.teyacompany.com



Ribbon Cutting Ceremony: Ron Perry, President/CEO and Greg Halsey, Sr. Program Manager cut the ribbon at Teya Enterprises' new manufacturing facility in Ridgecrest, California. *March 2023.*



About TEYA

Credentials

- ✓ Alaska Native Corporation (ANC)
- ✓ SBA 8(a) Certified
- ✓ Small Disadvantaged Business (SDB)
- ✓ Indian Small Business Economic Enterprise (ISBEE)
- ✓ ISSA CIMS GB Certified with Honors

Clearances

- ✓ Secret for Teya Enterprises, LLC

Offices Across the U.S.

- ✓ Headquartered in Anchorage, Alaska
- ✓ Regional offices in Alabama, Arizona, California, and Virginia
- ✓ Manufacturing facilities in California and Virginia

Bonding Capacity and Credit

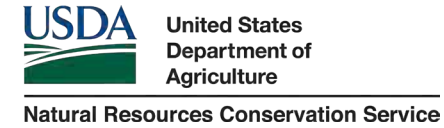
- ✓ \$100 million (single)
- ✓ \$250 million (aggregate)
- ✓ \$3 million line of credit
- ✓ Ample cash reserves



CORE COMPETENCIES

- ✓ Facilities Maintenance / OCM
- ✓ Janitorial / Healthcare Env. Cleaning
- ✓ Construction (DB C DBB)
- ✓ Manufacturing C Kitting
- ✓ Disaster Response Services
- ✓ Infrastructure
- ✓ Professional Services
- ✓ Technical Integrator / Innovator
- ✓ Managed IT Services
- ✓ Help /Call Desk Support

FEATURED CLIENTS



U.S. Small Business Administration



US Army Corps of Engineers.



ARMY MEDICINE
Bringing Value...Inspiring Trust



CONFIDENTIAL - Capabilities Briefing

FEATURED NAICS CODES

- ✓ 236220 Commercial and Institutional Building Construction
- ✓ 237120 Oil and Gas Pipeline and Related Structures Construction
- ✓ 237990 Other Heavy and Civil Engineering Construction
- ✓ 334511 Search, Detection, Navigation, Aeronautical, and Nautical System and Instrument Manufacturing
- ✓ 336413 Other Aircraft Parts and Auxiliary Equipment Manufacturing
- ✓ 541330 Engineering Services
- ✓ 541519 Other Computer Related Services
- ✓ 541611 Admin Management and General Management Consulting Services
- ✓ 541990 Professional, Scientific and Technical Services
- ✓ 561210 Facilities Support Services
- ✓ 562219 Other Nonhazardous Waste Treatment and Disposal

FEATURED PAST PERFORMANCE

- ✓ 2022-2026 | Program Value \$46.1M | NAWCWD CLPL CDAS Fabrication & Integration
- ✓ 2022-2025 | Program Value \$150M | U.S. Air Force, JBER, MACC IDIQ
- ✓ 2022-2023 | Contract Value \$9M | NAVFAC Wetlands Mitigation & Slope Stabilization, NSB Kings Bay
- ✓ 2021-2024 | Contract Value \$16.6M | USACE Baltimore, Swing Space for Barracks, JBMHH
- ✓ 2021-2024 | Program Value \$74M | MEDCOM, Tripler Army Medical Center, Ft. Shafter, HI, Healthcare Environmental Cleaning Services
- ✓ 2021-2026 | Program Value \$5.1M | CBP AMOC, Facility Operations, Janitorial, & Grounds Maintenance, March AFB
- ✓ 2020-2025 | Program Value \$6.5M | GSA, O&M, VTE, Janitorial, Grounds Maintenance, & Trash Services at NARA & Shea
- ✓ 2017-2022 | Program Value \$11M | Navy SWRMC, Facilities Support Services



CHOOSE TEYA.

WE ENSURE MISSION SUCCESS.

Ms. Stacy Swann, Sr. Account Executive
(240) 988-8699
stacy.swann@teyacompany.com





PIONEERING SOLUTIONS TO SERVE THE NATION

Federal Market Capabilities

About Gannett Fleming TranSystems

LEADERS IN RESILIENT AND SUSTAINABLE PLANNING, DESIGN, AND TECHNOLOGY



JOINING FORCES



5,000+
EMPLOYEES

in 130 offices delivering resilient and sustainable planning, design, construction oversight, and technology solutions.



\$1.3 BILLION
COMBINED REVENUE

MARKETS

we offer comprehensive infrastructure consulting services to a wide range of markets, including transportation, water resources, civic, education, federal, industrial, power, and life sciences.



FEDERAL



EDUCATION



WATER RESOURCES



TRANSPORTATION



CIVIC



INDUSTRIAL



POWER



LIFE SCIENCES

STRONG COMBINED GEOGRAPHIC FOOTPRINT



● Gannett Fleming
● TranSystems

Meet Our Team



John Peabody



Cathy Otis



Kevin Chafin



Kellie Reardon



Victoria Mechtly



● Gannett Fleming
● TranSystems

Federal Market Solutions

STRATEGIES FOR LONG-TERM VALUE AND FLEXIBILITY

Solving Complex Architecture and Engineering Challenges

We optimize our services to help you:



Meet the latest industry regulations



Improve the robustness, resiliency, and reliability of critical infrastructure



Create a new facility to support your mission and the goals of your operation

Providing Comfortable, Healthy, Energy-Efficient Spaces

Our team provides the expertise, technical insight, and partnership you need to transform equipment, systems, and entire buildings. We have deep experience in traditional services, including:



Architecture



Civil engineering



Mechanical engineering



Structural engineering



Electrical engineering



Technology/communications engineering

Leading with Integrated Design Expertise

- We use an integrated design approach for our architectural and engineering design services.
- We engage all design disciplines early in the project, making key decisions during the conceptual and schematic design stages.
- Our multi-disciplinary experience translates to a more efficient and cost-effective project.
- Our goal is to create spaces that:
 - Increase productivity.
 - Exemplify your organization's values.
 - Result in overall economic benefits.

Contractor Performance Assessment Reports

- Agencies have consistently rated our performance exceptional or very good under the quality, schedule, cost control, management, and regulatory compliance criteria.
- None of our Ratings are below Satisfactory



of our CPARS for
QUALITY are
VERY GOOD and
EXCEPTIONAL



of our CPARS for
SCHEDULE are
VERY GOOD and
EXCEPTIONAL



of our CPARS for
COST CONTROL are
VERY GOOD and
EXCEPTIONAL

Wide Range of Major Federal Projects

- Defense programs
- Military and civilian facilities
- Water resource development
- Flood Risk Mitigation
- Dam and Levee Safety
- Ecosystem Restoration
- Sustainability, resiliency, and recovery
- Security and safety services
- Geospatial analytics and technology
- Environmental restoration and remediation
- Transportation



Contract Vehicles

We support approximately 40 federal contracts as prime consultant, joint venture partner, or key subconsultant, for dozens of U.S. agencies:

- Air Force Civil Engineer Center
- Army Contracting Command
- Army Corps of Engineers (USACE)
- Army Installation Management Command
- Dept. of Agriculture, Natural Resources Conservation Service
- Dept. of Homeland Security (USCG, CBP, USSS, FLETC)
- Dept. of Interior, Bureau of Indian Affairs, Fish and Wildlife Service, Bureau of Reclamation
- Dept. of Justice, Federal Bureau of Investigation
- Dept. of State
- Dept. of Transportation, Federal Highway Administration and Federal Transit Administration
- General Services Administration, Public Buildings Service
- National Guard
- National Reconnaissance Office
- Naval Facilities Engineering Command
- United States Transportation Command
- United States Postal Service

Featured Projects

POWERFUL BUILDING SOLUTIONS



**Pennsylvania Army
National Guard Training
Aids Center**

Client: U.S. Property and
Fiscal Office for
Pennsylvania

Location: Annville, Pa.

Size: 63,000 sq. ft., 10
acres

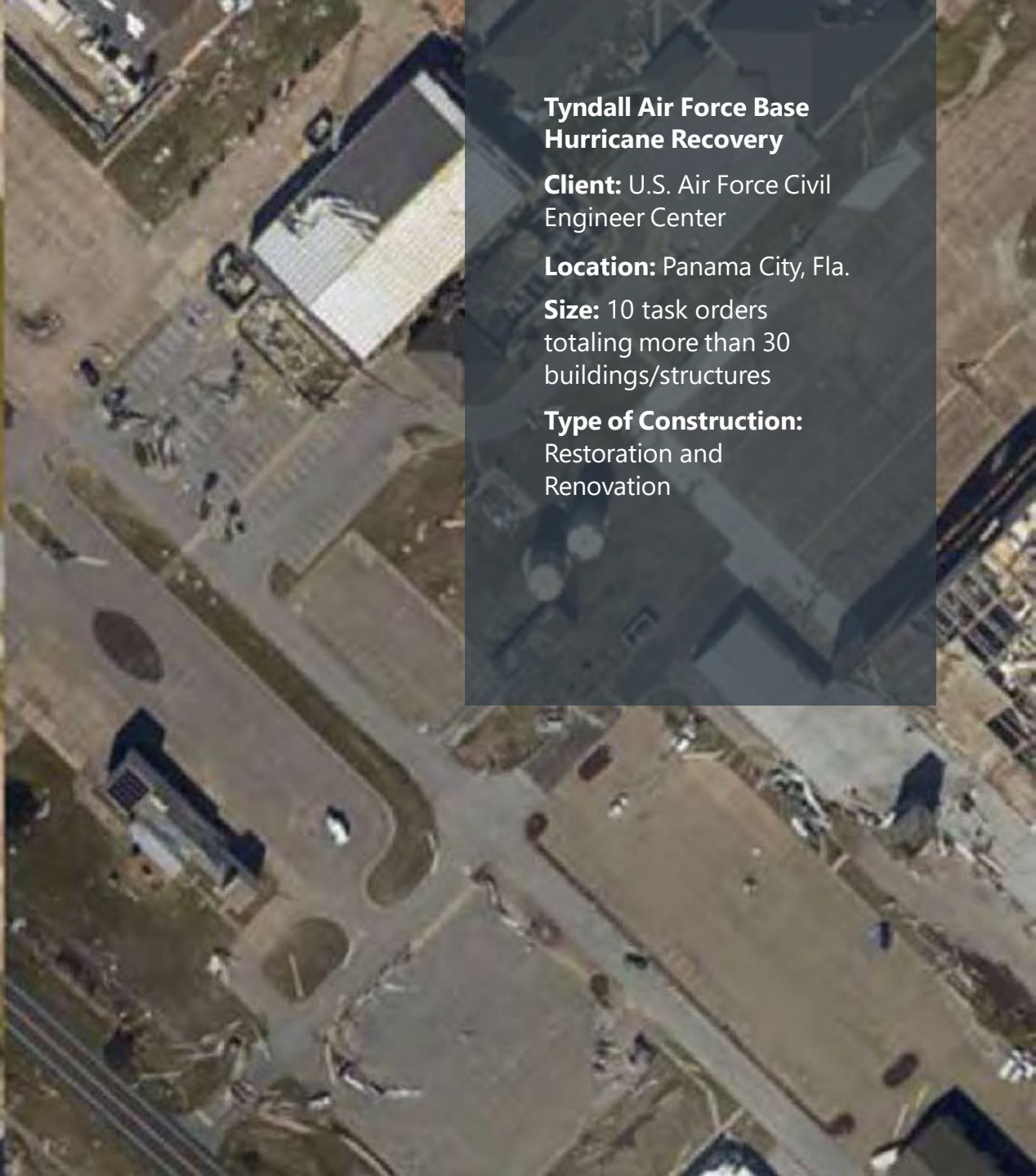
Type of Construction:
New Construction

LEED Gold

***National SAME Grand
Award Winner***



1
SIMULATOR



**Tyndall Air Force Base
Hurricane Recovery**

Client: U.S. Air Force Civil
Engineer Center

Location: Panama City, Fla.

Size: 10 task orders
totaling more than 30
buildings/structures

Type of Construction:
Restoration and
Renovation

An aerial photograph showing a city street completely inundated with dark brown floodwater. The water has surrounded several multi-story buildings, some of which have their lower floors submerged. A green metal truss bridge spans across the flooded area in the upper left. The surrounding area includes trees, parking lots, and other urban structures. The overall scene depicts the significant impact of extreme weather events on infrastructure and public safety.

FHWA Pilot Program

Client: New Jersey and Arizona Departments of Transportation

Location: New Jersey and Arizona

Extreme weather events are costly and affect capital improvement programs and the traveling public. The FHWA pilot program will develop solutions to improve roadway durability and resilience.

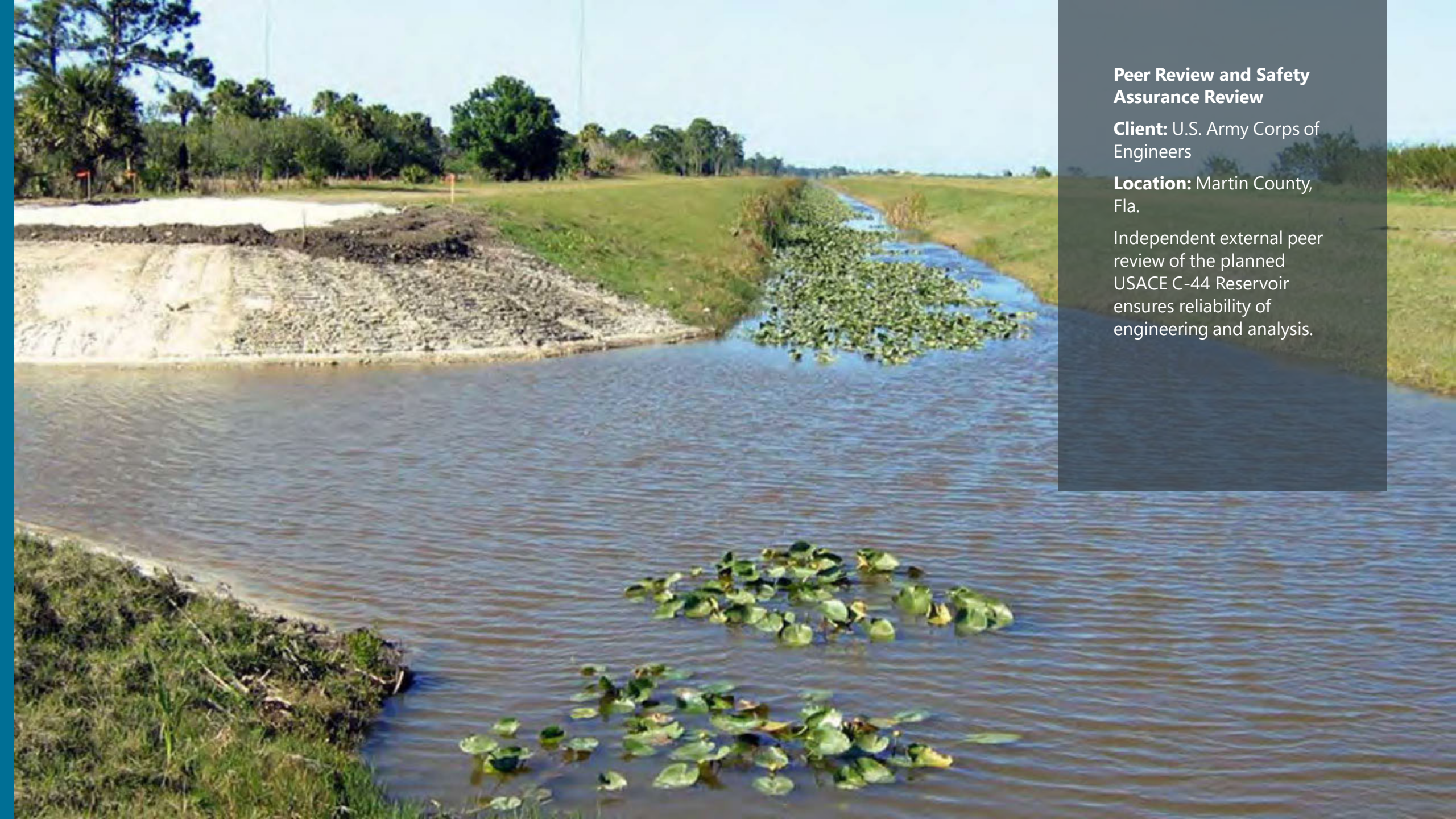


**Federal Energy
Regulatory Commission's
Dam Assessment Matrix
for Security and
Vulnerability Risk
Training**

Client: Various clients

Location: Various
locations throughout the
U.S.

Intensive coursework
enhances security
assessment capabilities to
maintain operational safety



Peer Review and Safety Assurance Review

Client: U.S. Army Corps of Engineers

Location: Martin County, Fla.

Independent external peer review of the planned USACE C-44 Reservoir ensures reliability of engineering and analysis.



**Air and Marine
Operations Laredo Air
Branch Site Master
Planning & Design**

Client: Customs and
Border Patrol

Location: Laredo, TX

Size: 128,800 total SF

Design Fee: \$2M

Construction Cost: \$21M

Type of Construction:
New construction

**Communication
Information Systems
(CIS) Ops Complex**

Client: NAVFAC SW

Location: Camp
Pendleton, CA

Size: 93,776 SF

Construction Cost: \$70M

Type of construction:

New construction

Design/Build Designer of
Record

LEED Silver





**Air Combat Command
Dormitory, Moody AFB**

Client: U.S. Army Corps of
Engineers

Location: Moody AFB, GA

Size: 46,790 total SF

Construction Cost: \$14M

Type of Construction: New
construction

LEED Gold



**P-194 Unmanned Aircraft
System Facilities Expansion
Facility**

Client: U.S. Army Corps of
Engineers

Location: MCAS Cherry
Point, NC

Size: 79,885 total SF

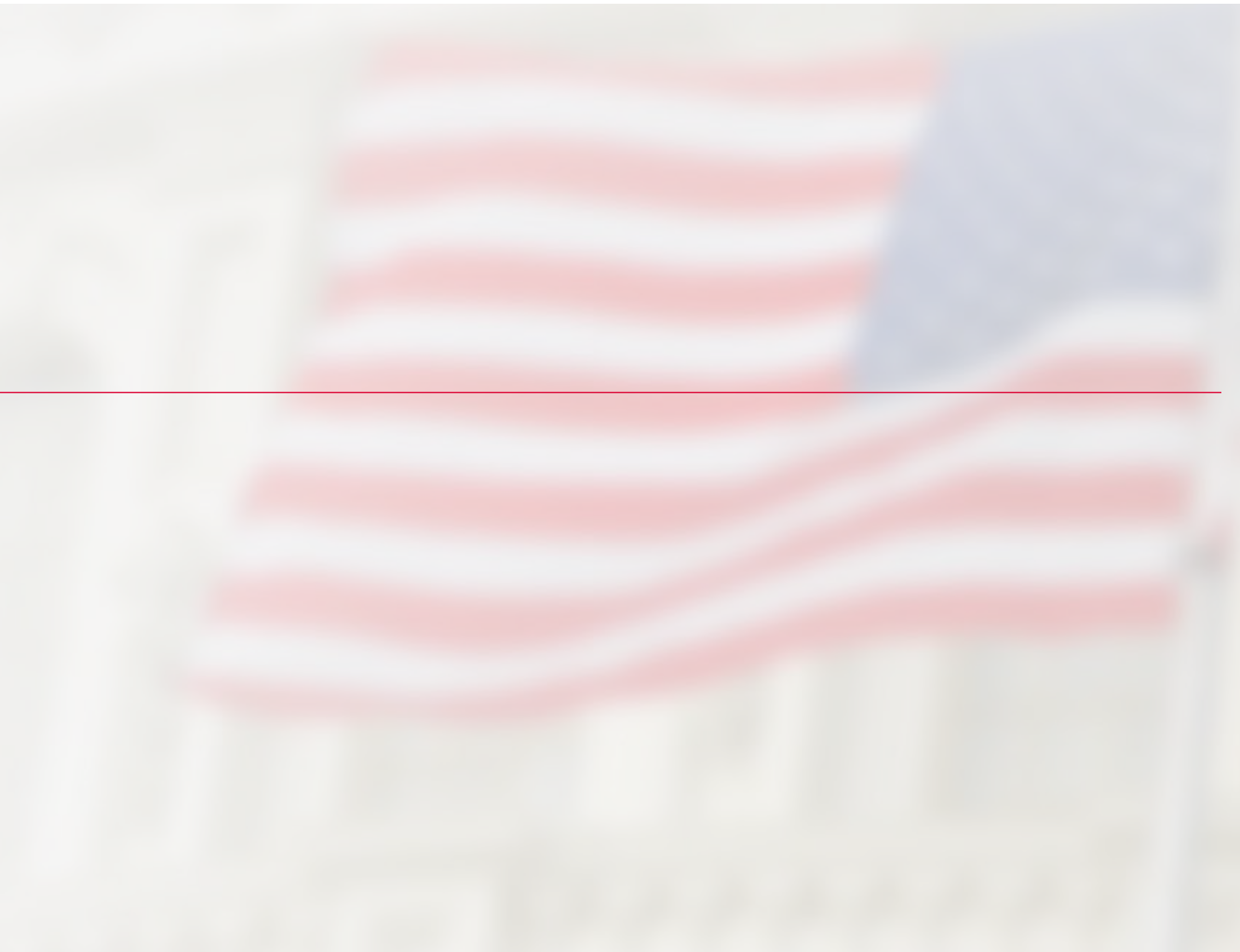
Construction Cost: \$25.5M

Type of Construction: New
construction Design/Build
Designer of Record



TRANSYSTEMS

THANK YOU!





SCE

SOIL CONSULTANTS ENGINEERING

Like People, Soils Are Different

ABOUT SCE



★ Manassas, VA

Est. 1960



Geotechnical Engineering



Materials Testing



Environmental Compliance



AASHTO Accredited Laboratory



CAPABILITIES

GEOTECHNICAL INVESTIGATION & ANALYSIS

INFILTRATION TESTING

POST CONSTRUCTION INSPECTIONS

SOIL BORINGS & SAMPLINGS

CONSTRUCTION OBSERVATION

SPECIAL INSPECTIONS

SLOPE STABILITY ANALYSIS

CONSTRUCTION CODE INSPECTIONS

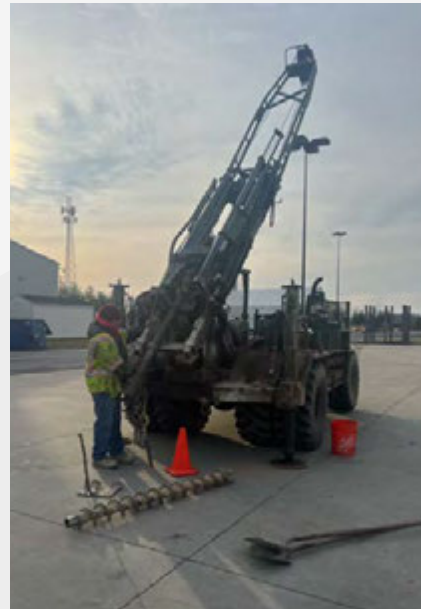
MATERIAL TESTING

EROSION & SEDIMENT CONTROL INSPECTIONS

SWPPP INSPECTIONS

SOIL & CONCRETE LABORATORY TESTING






GEOTECHNICAL ENGINEERING



-  Geotechnical Investigation & Analysis
-  Soil Boring & Sampling
-  Slope stability Analysis
-  Infiltration Testing
-  Soil Remediation
-  Retaining Wall Design
-  Framing Repair Details
-  Slab and Footing Design Details

MATERIALS TESTING






-  Soil, Concrete, Asphalt, Masonry Observation
-  Sprayed on Fireproofing Insulation Observation & Testing
-  Special Inspections
-  Post Construction Inspections
-  Construction Code Inspections

ENVIRONMENTAL COMPLIANCE



 Erosion & Sediment
Control Inspections

 Stormwater Inspections
 SWPPP Book
 SWPPP Box Installation



E&S Project Showcase

Blue Ridge Land Development

- ★ 30 Acres
- ★ Located in Manassas, VA
- ★ Future Microsoft Data Center
- ★ Estimated 13-month E&S Project

AASHTO ACCREDITED LAB



-  California Bearing Ratio (CBR)
-  Proctors and Modified Proctors
-  Soil Classification
-  Texture Analysis
-  Topsoil Analysis
-  Concrete Compression Testing

PAST PERFORMANCE



Airports



Churches



Data Centers



Electric Wind Farms



Federal Bases



Multi-Family Buildings



Municipal Buildings



Museums



Office Buildings



Warehouses



Water Treatment Facilities



PROJECT HISTORY

Joint Base Andrews NAVFAC Alert Facility



May 2023-Present

Active Military Training Site Richmond, VA

- Over 2000+ ft. of drilling
- 100+ Infiltration Tests
- In-situ resistivity testing

Army Aviation Support Facility



June 2023-October 2023

CIA Warrenton Training Center, Station B



April 2020-August 2022

Naval Support Facility



August 2024-Present

Secure Electromagnetic Research Facility Dahlgren, VA

- 66,000 sq. ft. facility
- 31 borings between 50-100 feet
- Infiltration testing for stormwater management (SWM) facilities
- Test pits to investigate existing fill



**US Army Corps
of Engineers.**



PARTNERING OPPORTUNITIES

**We are looking to collaborate
with:**

- **Architects and Civil Engineering Companies**
- **Medium to Large Companies** to support larger projects by providing essential manpower while gaining experience



THANK YOU

*We look forward to working with
you*



CONTACT US
Doug Smith - Vice President

 Office: 703-366-3000

 Cell: 703-405-3999

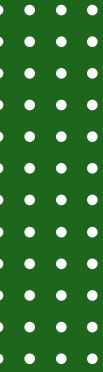
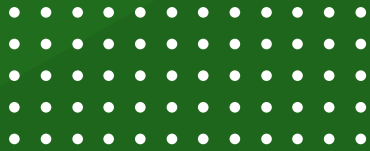
 Email: doug.smith@soilconsultants.net



Logan Goodrich - Business Development

 Cell: 703-434-2596

 Email: logan.goodrich@soilconsultants.net



Michael Baker International

Overview

October 10, 2024

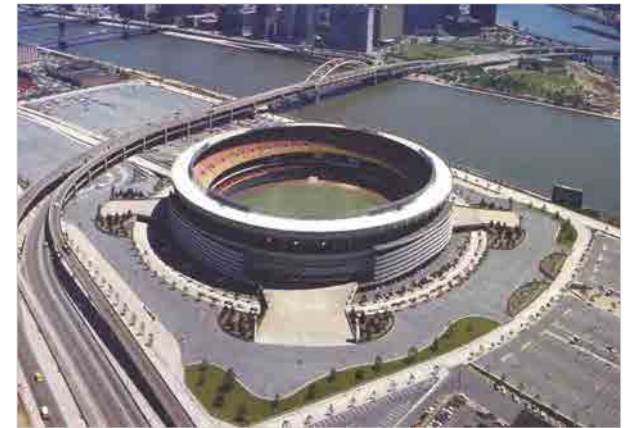


Michael Baker
INTERNATIONAL

We Make a Difference

A Legacy of Excellence

From our humble beginning in 1940, we have grown to work on some of the most impressive projects across the country and around the world.



At-A-Glance



4,200

Employees



85

Offices



\$900M

Annual Revenue



16,000+

Lives improved in Nicaragua,
Bolivia and Rwanda through
Bridges to Prosperity



#28

2024 ENR Ranking



Our Team



83

Certified Planners



63

Registered Architects



100

LEED Professionals



1,126

Professional Engineers



92

Project Management
Professionals



10

Professional Landscape
Architects



14

Professional Geologists



110

Employees with
Security Clearances
28 TS | 24 TS/SCI



14

Professional Land
Surveyors



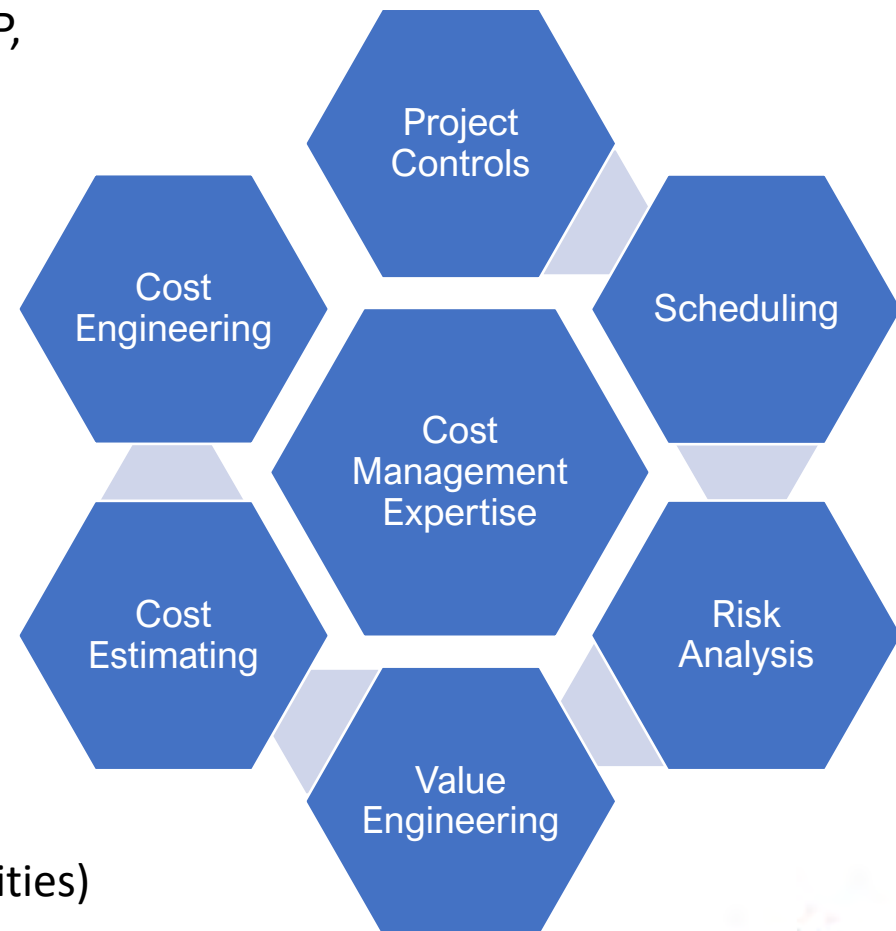
Trusted Partner to All Branches of the Military

- Anti-Terrorism/Force Protection
- Airfield & Aviation Design
- Architecture
- Building Systems Engineering
- Building Information Modeling
- Bridge Inspection and Design
- Civil Engineering
- Construction Management
- Cost Engineering
- Cyber Security
- Design-Build
- Environmental Consulting
- Environmental Sustainability
- Geotechnical Engineering
- GIT/GIS Mapping
- Hydraulics & Hydrology
- Infrastructure Planning & Design
- LiDAR / Survey / Drone Survey
- Master Planning
- Military Installation Planning
- NEPA
- Program Management
- Renewable Energy
- Site Utility Assessment
- Special Access Program
- Facilities
- Telecom & Security Systems
- Value Engineering
- Water/Wastewater Resources



Expertise on Complex & Special Projects in 120 Countries

- Expert staff averages more than 25 years of experience with numerous licenses and certifications (PE, CCP, CEP, CPE, CVS, PMP, EVP, PSP, LEED AP)
- Specialized Estimating- DOD/DOS/DOE/NSF
- Planning Charrette & DD1391 Development
- Project Sampling
 - MILCON
 - Medical Facilities
 - Housing
 - Data Centers
 - Laboratories
 - Diplomatic Facilities
 - Museums
 - Libraries
 - Schools
 - Infrastructure (Aviation, Transportation, Utilities)



High Performance Building Solutions

We offer a range of sustainable, resilient and smart services, supporting ground-up and retrofit projects plus building analysis



DECARBONIZATION

- Portfolio Decarbonization Strategy
- Building Decarbonization Assessments
- Emission Reduction Strategies & Net Zero



STRATEGIC PLANNING

- Energy Planning
- Sustainability Planning
- Carbon Neutrality Planning



BUILDING OPTIMIZATION

- ASHRAE Level I, II & III Audits
- EISA Compliant Energy & Water Evaluations
- Retro-commissioning
- Monitoring Based Commissioning
- Energy Modeling & Design Optimization
- Measurement & Verification
- Life Cycle Assessments
- Building Automation Systems (BAS) Optimization



ENERGY RESILIENCE

- Microgrid Analysis & Design
- Distributed Energy Resource (DER) System Analysis & Design
- Critical Load Profile Analysis & Development
- Redundant Power Distribution Systems
- Automated Load Shedding Systems



Building System Cybersecurity Consulting



Our team of seasoned operational technology (OT) cybersecurity experts have years of experience in building technology and security.

- Design Review
- Risk Assessments
- Asset Management
- Guideline Development
- Full Life-Cycle Support



Dormitory for 4,600 Midshipmen & 1,000 Support Services Staff

- National Historic Landmark
- 9 wings built between 1908 and 1961
- 1,900,000 SF, 43 acres, 1,700 rooms, 5 stories, 1,600 miles of wiring, 4.8 miles of corridors
- 25% larger than U.S. Capitol Building
- Has its own zip code and post office
- Area equal to 32 football fields



US Naval Academy Bancroft Hall Recapitalization Program

 Annapolis, MD

47,000 sq. ft.



Building 8 Renovation Marine Barracks

 *Washington, DC*

500,000 sq. ft.



Holiday Inn Express

📍 Fort Gregg-Adams, VA

84,176 sq. ft.



C-5/C-17 Fuel Cell Maintenance Hangar

 *Dover Air Force Base, DE*



Tyndall AFB Recovery Program & Design Integration

 *Air Force Civil Engineer Center, FL*

The Lakes, Princess Anne Plaza, and Windsor Woods

- \$490M flood mitigation program
- Overall program management, advisory services, stormwater master planning, analysis, engineering design and construction support services
- Improvements include 2 large stormwater pump stations (750 and 1,400 cfs), 3 tide gates, additional storage, flood barriers, and storm drains (over 56,000 LF).
- Conversion of a City-owned golf course into a Stormwater Park with recreational amenities ~ 300 acre-feet of stormwater storage



Flood Mitigation Program

Virginia Beach, VA

Trusted Partner within the Small Business Community

Michael Baker is committed to driving meaningful growth of our small and disadvantaged business partners. We currently mentor two protégé partners under the SBA All Small Mentor-Protégé Program.



Small Business, SDVOSB JV

With protégé Miller-Remick, we provide full-service AE planning, design and construction management services; resilience, energy and sustainability; healthcare, central plant and utility design to support our federal clients.



Small Business, 8(a), WOSB JV

With protégé G.M. Hill, we provide comprehensive AE services for design-bid-build and design-build delivery of federal infrastructure projects.



Contact Information

Beth Drylie, PE

Director of Business Development, Mid-Atlantic

bdrylie@mbakerintl.com

(757) 631-5445

Michael Baker
INTERNATIONAL

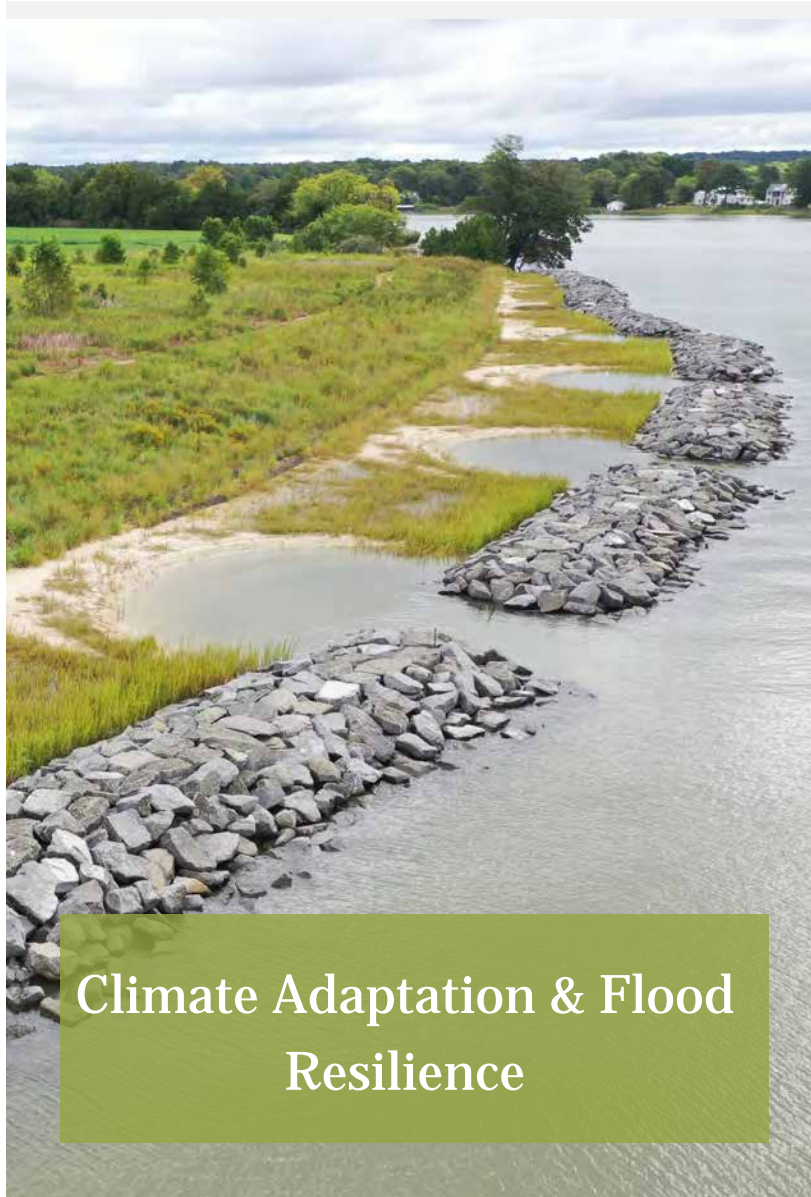
We Make a Difference



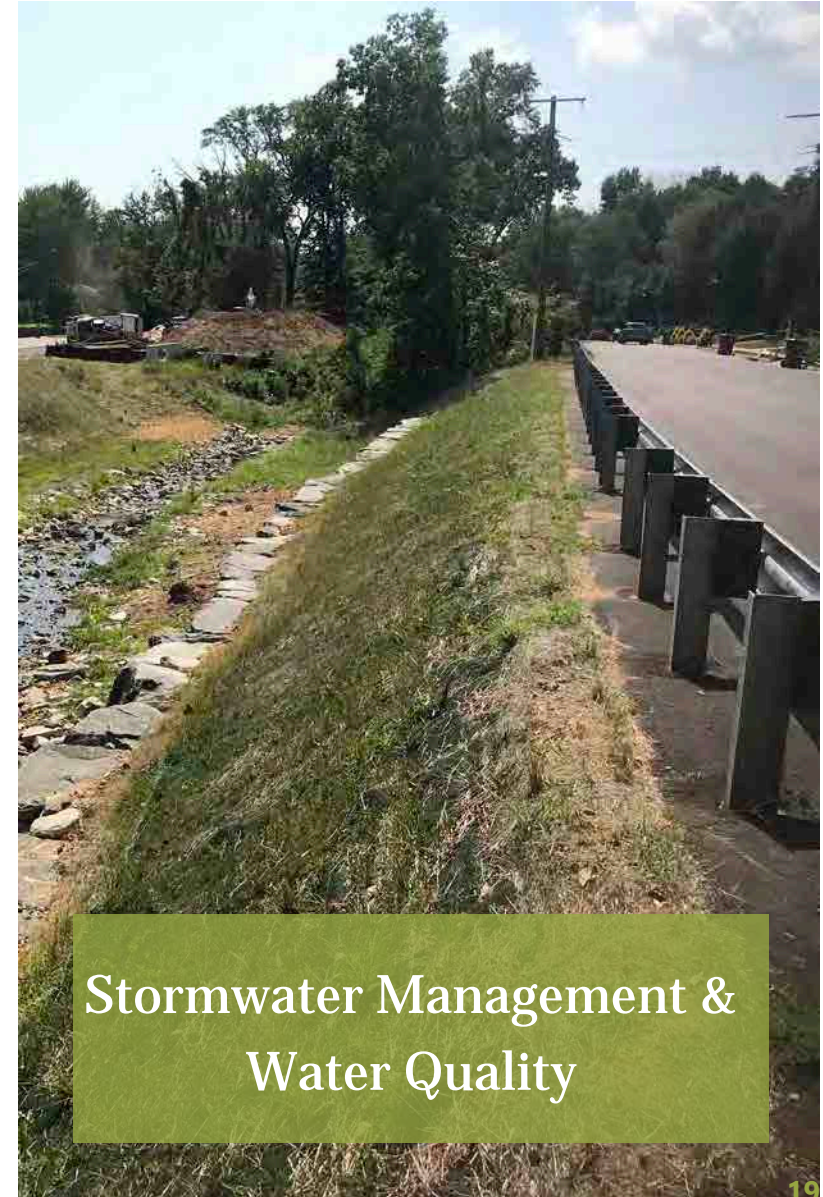
Our Solutions



Environmental Mitigation



Climate Adaptation & Flood Resilience



Stormwater Management & Water Quality

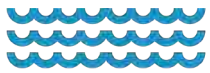
Our Work

10

FEDERAL AGENCIES SUPPORTED

25+

FEDERAL CONTRACTS



422

MILES SHORELINE & TERRACES RESTORED



686

MILES STREAMS RESTORED



77,736

ACRES WETLANDS RESTORED



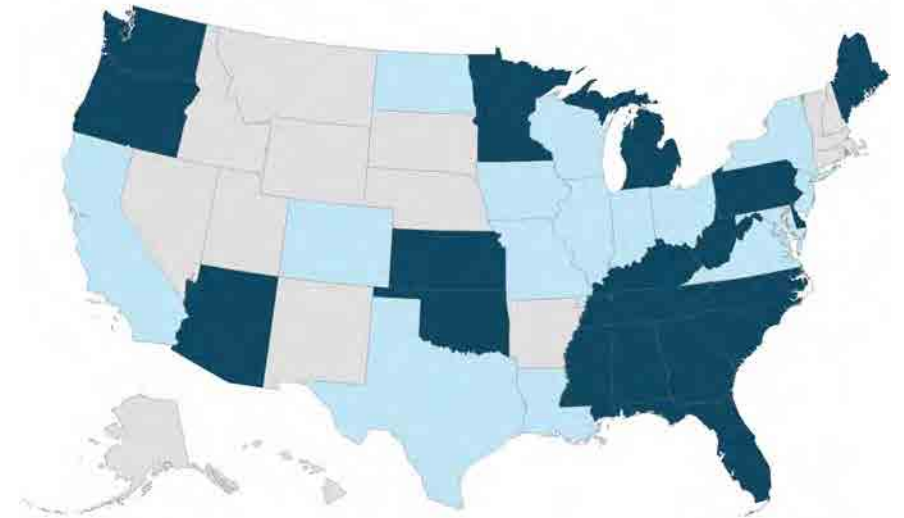
338

MITIGATION PROJECTS

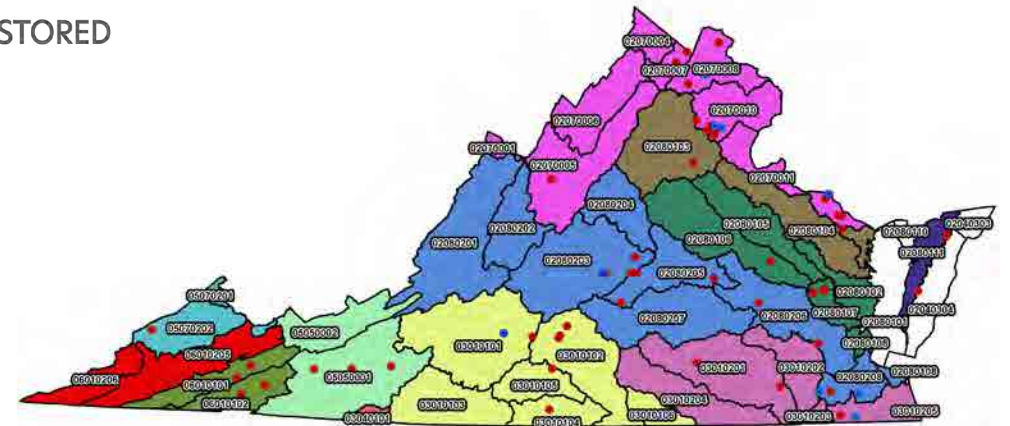


28,055,610

TREES PLANTED



■ Non-federal contracts
■ Federal contracts



Virginia Wetland, Stream, Water Quality Mitigation Credit Banks

Fort Belvoir, Directorate of Public Works

Fort Belvoir, VA

- Stream Restoration Design and Construction for American Water- 4 sites
- Stream Restoration Construction for American Water Sites- 4 sites
- Emergency Wetland Remediation for American Water, 2015
- USACE Baltimore District Single Award Task Order Contact for Environmental Remediation Services Water Quality Sampling for MS4 Permit Requirements
- Design-Build Stream Restoration for Building 3245/3246
- On-Site Environmental Staff Support
- Wetland Compliance Permitting
- Erosion and Sediment Control / Stormwater Management Construction Site Inspections
- National Museum of the US Army on Fort Belvoir – Environmental Permitting
- Study and design solutions to mitigate flooding issues within a residential community
 - Two-model approach and three-part design solution to address at least a 100-year flood event



Connect with us



Heather Haynes-Long
Director, Federal Solutions
hhaynes@res.us | 614.403.4250



Reid Cook
Mid-Atlantic Director of Project Delivery
rcook@res.us | 540.905.4504



Scan to review our full capabilities statement

NORFOLK DISTRICT U.S. ARMY CORPS OF ENGINEERS

FY25+ WORKLOAD FORECAST
September 2024

Matthew Karlinchak
Chief, Arlington National Cemetery Br.

Cherie Kunze
Deputy for Small Business Programs



**US Army Corps
of Engineers®**

U.S. ARMY

As of 02 Oct 2024



CHANGES SINCE LAST UPDATE

Norfolk CSRM

- **Will use** a DBB Construction SATOC for Phase 1A Floodwall – Berkley Bridge to Campostella interchange of Hwy 264.
 - Industry Day being planned for October 2024.
 - Solicit – 4QTR FY25

AE IDIQs and MATOC Plan

Contract	Planned Solicitation	Contract Value
Small Business Construction MATOC	2Q FY25	\$ 100M
General AE (MILCON, IIES, Cemetery, SRM)	3Q FY25	\$ 249M
Civil Works AE (CSRM Support)	3Q FY25	\$ 249M
ANC Entry Corridor Design – SATOC	1Q FY26 (T)	\$ 50M
Hydrographic/Land Survey –Services	2Q FY25 (T)	\$ 50M

Reorganization – Split Engineering and Construction

- **Engineering** – Ms. Cheryl Fromme, cheryl.l.fromme@usace.army.mil
- **Construction** – Mr. Aaron Edmonson, aaron.g.edmonson@usace.army.mil

Additional Updates in the following slides are annotated in **Blue**



TRENDS/HIGHLIGHTS

Radford & Holston Army Ammo Plants

- **AE Contract: Under Evaluation**
 - \$240M MATOC
 - Will allow for use at all Ammunition GOCOs
 - **Award CY 24**
- **ANSol Thermal Treatment (Holston) – DBB**
- **DB ANSol Tank Farm (Holston) – In evaluation**
- **New Water Intake Facility (Holston) – 1QFY25 Solicitation**
- **Laundry Facility – October Solicitation (DB Ph 1 RFP)**

Civil Works Program

- **Norfolk Harbor**
 - Norfolk Harbor, Thimble Shoal Channel O+M – **\$30M, Award 2QTR FY25**
 - **Lynnhaven River Basin – Ph 2 Wetland**; 12-acre wetland FY24
- **Norfolk Coastal Storm Risk Mgmt.** – approx. \$2.6B total cost, \$8M E&D underway for Ph 1
 - **\$399.3M** approved for construction funding from Bipartisan Infrastructure Law
 - **DB Pump Station – Harbor Park – Solicit: 2QTR FY25**
 - **SATOC for Phase (1A) – Solicit 4QTR FY25**
- **Peninsula Coastal Storm Risk Mgmt.** - **FCSA Executed 26 July 2024, Scoping underway**
- Awaiting new starts for **Coastal Storm Risk Mgmt Study** – Chincoteague
- FY24 BIL Spend Plan has **\$22M for renourishment of Sandbridge Beach, VA – 1st QTR FY26**
- **Craney Island Eastern Expansion – Main Dike - \$50M - \$100M – Solicit 2nd QTR FY25**

DoDEA

- **Main focus is on SRM – utilizing existing IDIQs**
- **Replacement AE MATOC Contracts awarded on 19 September 2024**
- **Replacement FAM Contract Award (TBD)**

Military Program

- **JBLE Program**
 - Ft. Eustis, HQ Bldgs., AIT Barracks PH IV, (\$10M - \$25M) - **Award Pending**
 - Ft. Eustis, ACP, Main Gate (\$10M - \$25M) - **Under Eval - ATR**
 - Langley, Fuel Systems Maintenance Dock (\$10M - \$25M) - **Under Eval – ATR**
 - FY 25 Langley, Dorm, (\$75M - \$100M) – **Design Complete; Solicit 2nd Qtr FY25 (Pending funds)**
 - **FY28 Ft. Eustis, Air Traffic Control Tower, (\$20M - \$40M) - In Planning – AE TO Pending**
 - FY26 Langley, ACP Large Vehicle Insp. Fac, (\$75M - \$100M) - **In Planning – AE TO Pending**

Arlington National Cemetery - \$10-\$15M SRM/YR

- **Southern Expansion –**
 - **Phase III – Cemetery Expansion (FY25) (Solicit – Dec 24)**
- **Amphitheater Interior Renovation (A-E) - Awarded**
- **Millenium Efflorescence (A-E) - Awarded**
- **Crook Bridge & Section 37 Repairs (A-E) - Awarded**
- **Road Projects (Full depth, Mill & Pave) (MATOC)**

- **UMMC**
 - **SOF Multi-Purpose Dynamic Range, Ft. Barfoot (\$1M - \$5M) - will resolicit - FY25**
 - **West Apron Fire Pump, Langley (\$1M - \$5M) Solicit: 1st Qtr FY25**
 - **FY25 Obstacle Course, Ft. Gregg-Adams (\$1M - \$5M) - In planning**
 - **FY25 DODEA Maintenance Fac, Quantico (\$5M - \$10M) - RTA**
 - **FY26 Ft. Eustis, Active Vehicle Barriers, Back-Gate (\$1M - \$5M) - In planning**



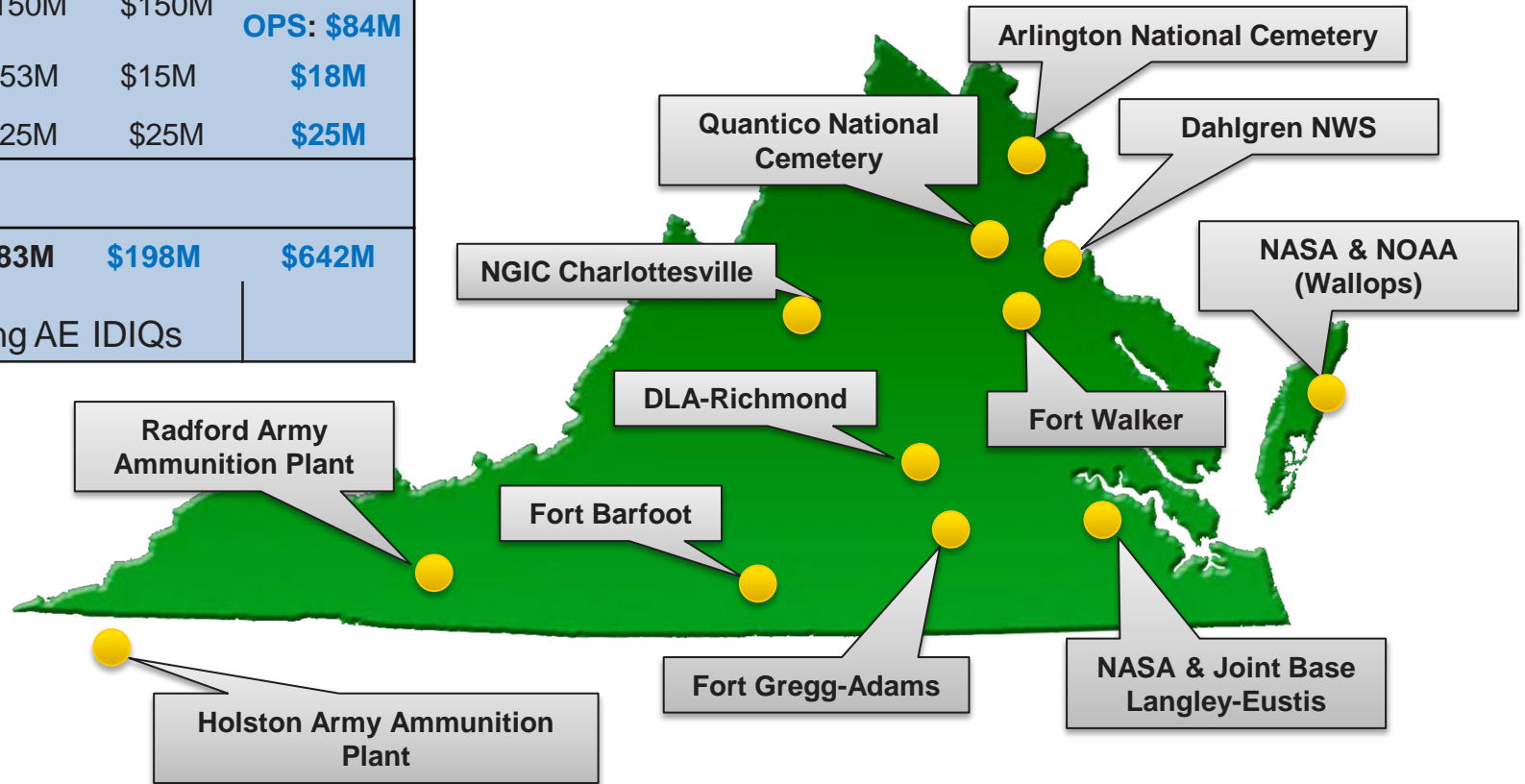
PROGRAM AT A GLANCE

PROGRAM SUMMARY:

	<u>FY19</u>	<u>FY20</u>	<u>FY21</u>	<u>FY22</u>	<u>FY23</u>	<u>FY24</u>	<u>FY25</u>
MILITARY	\$118M	\$477M	\$315M	\$105M	\$85M	\$ 3M	\$154M
IIES	\$33M	\$28M	\$145M	\$15M	\$170M	\$5M	\$190M
CIVIL & OPS	\$86M	\$51M	\$60M	\$153M	\$150M	\$150M	CW: \$171M OPS: \$84M
ANC	\$45M	\$30M	\$20M	\$10M	\$153M	\$15M	\$18M
DoDEA	\$22M	\$27M	\$25M	\$25M	\$25M	\$25M	\$25M
IIJA			\$557M				
	\$304M	\$613M	\$565M	\$865M	\$583M	\$198M	\$642M

*Does not include new or awards from existing AE IDIQs

Awarded: \$ 594M in FY23
\$190M in FY24



*Further Small Business socio-economic set-aside may be determined pending results of market research



U.S. ARMY

US Army Corps
of Engineers®

SMALL BUSINESS PROGRAM – 30 SEPTEMBER 2024

Type	NAO Goals	Current %	Current \$
Small Business	20%	42%	\$77,460,032
SDB	6%	29%	\$54,534,863
SDVOSB	3%	3.28%	\$6,163,723
WOSB	3%	5.06%	\$9,501,196
HUB Zone	3%	1.84%	\$3,450,805

First Time awards FY 24

W91236-24-C-5010 for Craney Island Project Office
Etolin Strait Dev.Group \$3,597,154.00

W91236-24-C-2010 B34 Chiller Replace, DLA Supply
 Ctr **East Coast Technologies** \$1,900,000

W91236-24-C-2007 for DSCR KR Laydown Area
Sawyer Services \$788,954.11

W91236-24-P-5029 for Recrui.Sta.Grp 1, JanitSvcs
Hamilton Creative Commission, LLC \$55,872.00

W91236-24-P-5028 for Recrui.Sta.Grp 4, JanitSvcs,
LI Resolutions \$24,805.32

W91236-24-D-4015 for CM Services
 Holston/Radford **Hayat Brown LLC** \$4,500,000

W91236-24-D-4017 for DODEA PM/DM Ft Stewart,
 Ft. Jackson,, Laurel Bay, **Dynamics-HHS, JV**
 \$12,943,491

W91236-24-C-4006 for DODEA SRM 8(A) WPNY
 MS Improve, **SK Constr & Mgmt** \$1,092,077

▶ OUTREACH EVENTS FY 24/25

SAME NoVa Post 9th Annual B2B

October 10, 2024

National Museum of the US Army, Fort Belvoir, VA

Association of the United States Army (AUSA) Annual Meeting

October 14-16, 2024

Walter E. Washington Convention Center, Washington, D.C.

ODU Civil & Env Engr Visiting Council

November 6, 2024

Norfolk Yacht Club, Norfolk, VA

SAME Annual Small Business Conference

November 20-22, 2024

Ernest N. Morial Convention Center, New Orleans, LA

2025 SAME Mid-Atlantic Small Business Outreach + Industry Day

February 24-26, 2025

Virginia Beach Convention Center, Virginia Beach, VA

Federal Construction, Infrastructure and Environmental Summit

April 22-24, 2025,

Wilmington Convention Center, Wilmington, NC



Capability briefings will resume in October. Send requests to Cherie.a.Kunze@usace.army.mil



OVERALL NORFOLK CSRM PROJECT SCOPE

City's Priorities for Construction Sequence:

- 1 Area 1 Ghent-Downtown-Harbor Park
- 2 Area 2 Pretty Lake
- 3 Area 3 Lafayette
- 4 Area 4 Broad Creek and Citywide/nonstructural

LEGEND

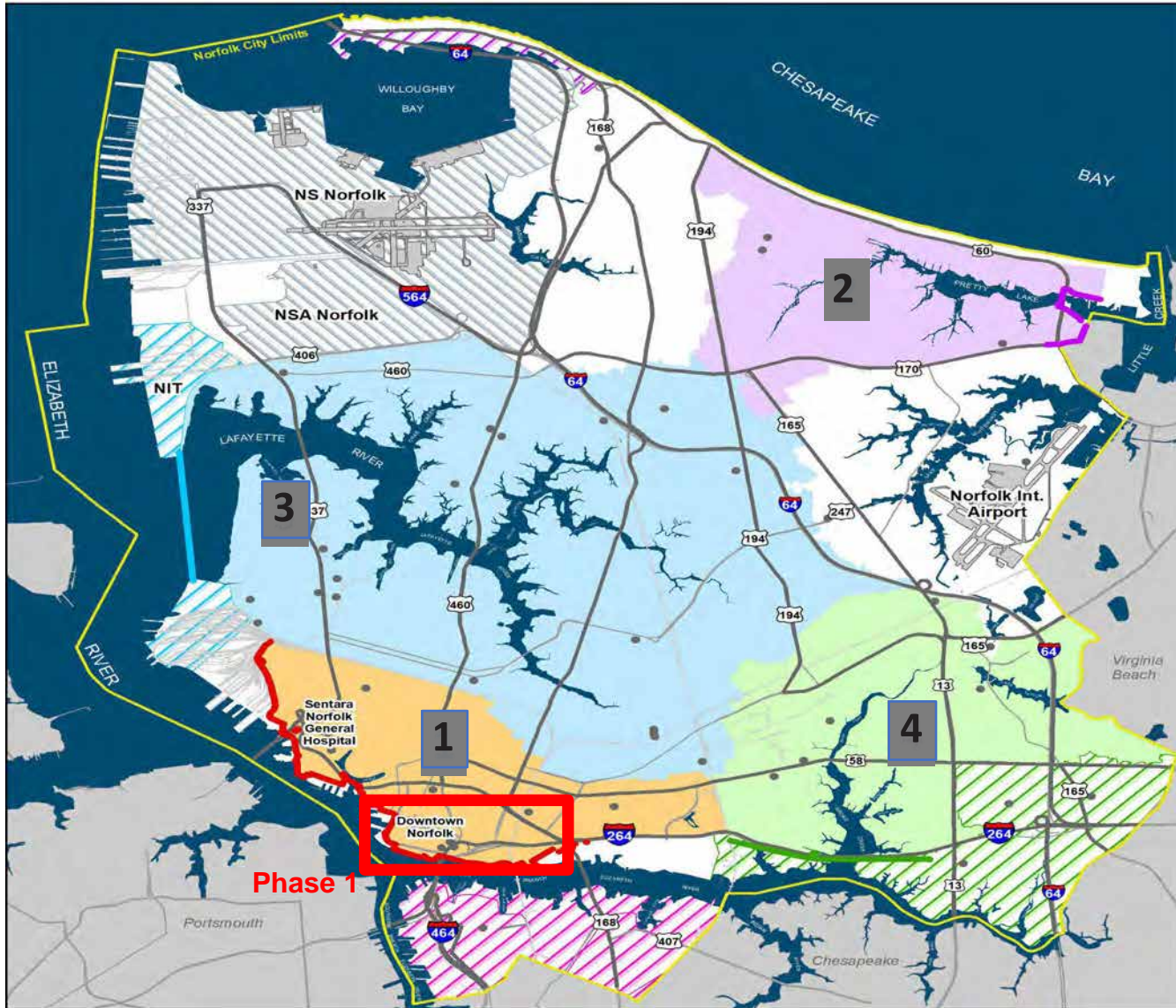
Structural Flood Risk Management Measures

- Ghent-Downtown-Harbor Park
- Pretty Lake Surge Barrier
- Lafayette Outer Surge Barrier
- Broad Creek Surge Barrier

Structural Measures Risk Management Area

Hatched Area Indicates Non-Structural Measures

- Ghent-Downtown-Harbor Park
- Pretty Lake Surge Barrier
- Lafayette Outer Surge Barrier
- Broad Creek Surge Barrier
- Campostella-Berkley Non-Structural Measures Area



Phase 1



PHASE 1A AND 1B

Phase 1B

Phase 1A





Former Project Timeline



**Timelines are approximate and subject to change.*

- Schedule is being revised to reflect the segmentation for Phase 1A, relative to the SATOC.
- Designs for Phases 1B, and 1C/D will progress to 35% design via AE Task Orders – Award in Oct 24
- Phase 3 design anticipated to start Jan 2025; Water Quality modeling is underway to support design.



PHASE 1 – NORFOLK CSRM PHASE 1 OVERVIEW

Phase 1a Pump Stations and Tide Gate (2 Construction Projects)

- Harbor Park Pump Station – Design-Build Acquisition Strategy (acquisition planning underway)
- 15% Design RFP scheduled for completion, Fall 2024; Utility relocations requirements identified and environmental assessment underway.
- Newton's Creek Pump Station and Tide Gate – Design –Bid-Build, currently taking design to 100% vs. Harbor Park at 15%

Phase 1a Wall/Levee System, Mitigation Features

- 100% DRAFT Plans and Specifications scheduled, November 2024
- SATOC is anticipated for Phase 1A to maintain the construction start schedule due to recently realized timelines associated with utility relocations and real estate certification

Phase 1b Pump Stations Phase 1b Wall/Levee System

- Task order from AE MATOC, scheduled for award in /October 2024
- Includes 2 pump stations: St. Paul's and Town Point Park

Phase 1C and D – 35% Design Task Order

- Phase 1C is Downtown, through Ghent; Phase 1D is the redesign of the existing downtown floodwall
- Task order from AE MATOC, scheduled for award in September 2024
- Phase 1C will be evaluated for phasing due to the length, cost and complexities with real estate and historic resources



FY25 NON-PROJECT SPECIFIC A/E IDIQ CONTRACTS + SATOCS



Type	Location	Lead POC	Amount	Small Business or Unrestricted	Solicitation Qtr / FY
DoDEA AE MATOC	CONUS & OCONUS	Alex Gusev	\$80M	UR	Awarded: 19 September 2024
Army Ammo Plants	Radford/Holston	Sarah Taylor	\$240M	UR	Under evaluation
SB AE MATOC	VA/Regional	Sarah Taylor	\$40M	SB	Under evaluation
CM Services – Norfolk CSR		Tom Booth	\$4M	SB	FY26
DoDEA Facility Asset Management (FAM)		Alex Gusev	\$35M	SB	TBD
DoDEA SRM x6	Various	Alex Gusev	\$4.5M each	SB	1Q-2Q FY25
General AE (MILCON, IIES, Cemetery, SRM)		Sarah Taylor	\$249M	TBD	3Q FY25
Civil Works AE (CSR Support)		Sarah Taylor	\$249M	TBD	3Q FY25
ANC Entry Corridor Design – SATOC		Sarah Taylor	\$50M	TBD	1Q FY26 (T)
Hydro/Land Survey		Mike Anderson	\$50M	TBD	2QFY25 (T)

* Further Small Business socio-economic set-aside may be determined pending results of market research



EXISTING IDIQS (month/year)

Hydrographic Survey

- **Waterways (exp. 9/25)**

James River Dredging

- **Cottrell (exp. 10/25)**

Craney Island Earthwork

- **Three Oaks (exp. 8/27)**

Vessel Repair (exp. 8/26)

- **Colonna Shipyard**
- **Fairlead Boatworks**
- **Lyon Shipyard**
- **Severn Yachting Center**

ANC Southern Expansion Des. (stand-alone award) (exp. 7/24)

- **HNTB**

Gregg Schwieterman
gschwieterman@hntb.com
(804) 895-3780

Architect/Engineering General (exp. 6/27)

- **Prime AE Group, Inc**
Ed Chamberlayne, PhD, PE, F.SAME
ed.chamberlayne@primeeng.com
410.862.0911
- **Woolpert-RS&H, LLC**
Doug Brown, PE, PMP, LEED AP BD+C JV
Doug.Brown@woolpert.com
618-632-2825
- **Benham-Stanley, LLC**
Terry Karras, AIA, LEED AP
terry.karras@benham.com
314.315.8510
- **Burns and McDonnell Engineering Company, Inc.**
William Sprauer, PhD, PE, LEED AP
wsprauer@burnsmcd.com
757-916-4361
- **AECOM Technical Services, Inc**
W. Lee Hopson Jr., PE, PMP, LEED AP
lee.hopson@aecom.com
757-306-6770
- **Clark Nexsen-CH2M Hill JV**
Danny E. Walker, AIA, DBIA
dwalker@clarknexsen.com
757.376.2829



EXISTING CONSTRUCTION MATOCS/IDIQS

DoDEA GA & AL PM/DM (exp. 3/29)

- Ahntech Inc.

DoDEA KY PM/DM (exp. 10/29)

- TIYA Support Services

DoDEA GA & SC PM/DM (exp. 3/30)

- Dynamic – HHS JV, LLC.

DoDEA NC PM/DM (exp. 6/26)

- ASI-Brymak

DoDEA West Point PM/DM (exp. 9/27)

- Ahntech Inc.

DoDEA VA PM/DM (exp. 9/28)

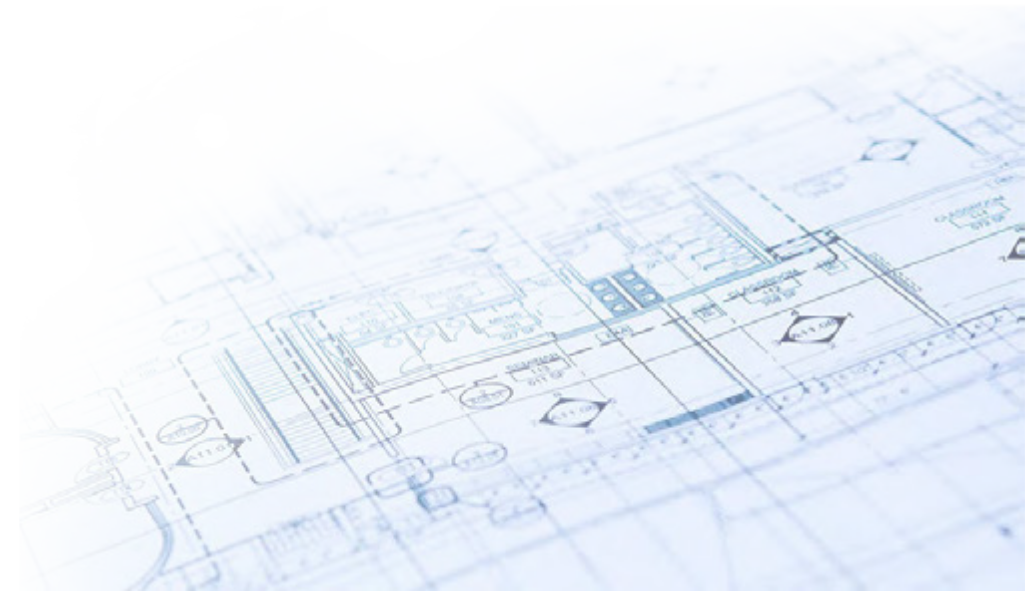
- Ahntech Inc.

Construction SATOCS (\$4M)

- New Dominion (NoVA/Richmond)

DoDEA AE IDIQ (\$ 80M) (exp. 9/29)

- Ewing Cole and SMMA (POC: John Capelli)
- KZF Design (POC: Doug Marsh)
- Schenkel & Shultz (POC: David Torbert)
- Woolpert (POC: Doug Brown)
- Zyscovich (POC: Michael McGuinn)





ACQUISITION STRATEGIES

Use sole source in most cases to get contractors doing specialized or work at unique locations – very limited use

Always trying to expand the pool of contractors working with us:

- 13 new contractors added to in FY21
- 7 new contractors added to in FY22
- 3 new contractors in FY23
- 8 new contractors in FY 24

Currently no pool of MATOCS to support SRM work

- One D-B SRM Construction Contract put in place – Northern VA (Quantico, Ft. Walker (Ft. A.P. Hill), Dahlgren, DSCR)
- Looking to add a stand-alone for DSCR and/or minor JOC – self performing majority of trades
- Small Business Constuction MATOC in **2QTR FY25**

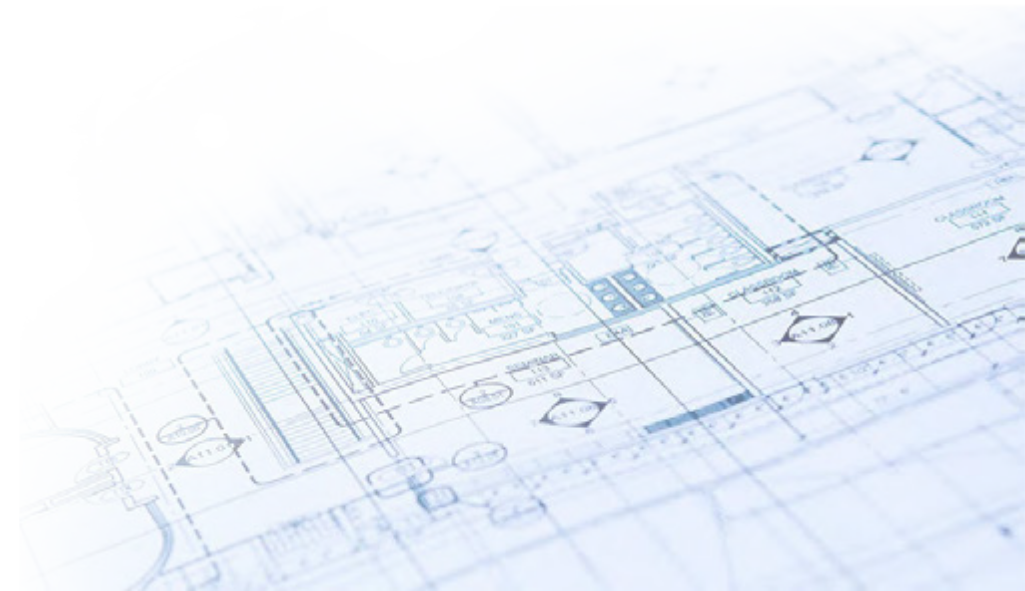
Developing Construction Acquisition Plans to support Norfolk Coastal Storm Risk Management Program

- Phase 1A – SATOC - DBB
- Phase 1B – Stand Alone DBB

Looking to develop the following additional tools:

DoDEA SRM IDIQS:

1. GA-AL: Ft. Moore, GA; Ft. Novosel, AL; Maxwell AFB, AL
2. KY: Ft. Campbell, KY; Ft. Knox, KY
3. NC: Ft. Liberty; Camp Lejuene
4. PR: Ft. Buchanan, PR; Ramey, PR
5. SC-GA: Ft. Stewart, GA; Ft. Jackson, SC; Laurel Bay Beaufort, SC
6. NY: West Point





MILITARY INSTALLATIONS - MILCON

Type of Work	Project Name	Acquisition Strategy – Stand Alone Contract or Basic IDIQ	Small Business or Unrestricted	Estimated Price Range	Anticipated Solicitation Qtr/FY
Construction	Renovate ACP Main Gate, Ft. Eustis	Stand Alone	SB	\$10M - \$25M	Solicited
	Fuel Systems Maint. Dock, Langley	Stand Alone	UR	\$10M - \$25M	Solicited
	West Apron Fire Pump, Langley	Stand Alone	SB	\$1M - \$5M	1Q FY25
	SOF Multi-Purpose Firing Range, Ft. Barfoot	Stand Alone	SB	\$1M - \$5M	Re-Solicit FY25
	F-22 Dormitory, Langley	Stand Alone	UR	\$25M - \$100M	2Q FY25
	Active Vehicle Barriers, Back-Gate, Ft. Eustis	Stand Alone	SB	\$1M - \$5M	2Q FY26
	ACP/ Large Vehicle Inspection Fac, Langley	Stand Alone	UR	\$25M - \$100M	2Q FY26
	Air Traffic Control Tower, Ft. Eustis	Stand Alone	UR	\$20M - \$40M	2Q FY28

* Further Small Business socio-economic set-aside may be determined pending results of market research



MILITARY FY25 – DEFENSE SUPPLY CENTER RICHMOND (DSCR)

Type of Work	Project Name	Acquisition Strategy – Stand Alone Contract or Basic IDIQ	Small Business or Unrestricted	Estimated Price Range	Anticipated Solicitation Qtr/FY
Construction	Renovate North Gate ACP (Bldg. 208 & 209)	Stand Alone	SB	\$1M - \$5M	Under Evaluation
	Overhead to Underground Powerlines	Stand Alone	SB	\$1M - \$5M	1Q FY25
	WH 4 Truss Repair	Stand Alone	SB	\$1M - \$5M	1Q FY25
	Renovate Open Shed 5	Stand Alone	SB	\$1M - \$5M	1Q FY25
	Renovate Warehouse 66, C Office	Stand Alone	SB	\$1M - \$5M	1Q FY25
	Replace Roof Bldg. 32	Stand Alone	SB	\$5M - \$10M	1Q FY25
	Replace Bldg. 80 Roof	Stand Alone	SB	\$1M - \$5M	2Q FY25



MILITARY FY25 – DEFENSE SUPPLY CENTER RICHMOND (DSCR)

Type of Work	Project Name	Acquisition Strategy – Stand Alone Contract or Basic IDIQ	Small Business or Unrestricted	Estimated Price Range	Anticipated Solicitation Qtr/FY
Construction	Renovate Bldg. 45	Stand Alone	SB	\$1M - \$5M	3Q FY25
	Redesign & Repave Parking Lot 7	Stand Alone	SB	\$1M - \$5M	3Q FY25
	Install Bldg. 46 Switchgear	Stand Alone	SB	\$5M - \$10M	3Q FY25
	Installation Electrification Study	Stand Alone	SB	\$300K - \$750K	1Q FY25
	Building 31, Demo 3 Bays (I - K)	Stand Alone	SB	\$1M - \$5M	4Q FY25
	Repair WH 32 Dock	Stand Alone	SB	\$1M - \$5M	4Q FY25
	Replace Roof Bldg. 31	Stand Alone	SB	\$5M - \$10M	4Q FY25
	Renovate Bldg. 37	Stand Alone	SB	\$5M - \$10M	4Q FY26

** Further Small Business socio-economic set-aside may be determined pending results of market research*



ARLINGTON NATIONAL CEMETERY



Type of Work	Project Name	Acquisition Strategy – Stand Alone Contract or Basic IDIQ	Small Business or Unrestricted	Estimated Price Range	Anticipated Solicitation Qtr../FY
Construction	Southern Expansion (Ph III) Cemetery Expansion	Stand Alone	UR	\$100M - \$250M	1Q FY25
	Millenium Efflorescence Repairs	Stand Alone	SB	\$500K - \$5M	1QFY26
	McPherson Roads (Pt 2) Full Depth Reconstruction	Roads MATOC	SB	\$500k-\$1.5M	Awarded
	Roosevelt Drive (Wheaton to Porter) Mill and Pave	Roads MATOC	SB	\$500-\$1M	Awarded
	Schley, Sherman, Meigs Full depth Road Reconstruction	Roads MATOC	SB	\$10M - \$12M	3Q FY25
	Amphitheater Repairs/ Tomb Guard Quarters	Stand Alone	SB	\$8M-\$12M	3QFY26
	Crook Walk Bridge & Sec. 37 Channel Repairs	Roads MATOC	SB	\$1M-\$1.5M	4QFY25



INTERAGENCY & ENVIRONMENTAL SERVICES (IIES) FY25

Type of Work	Project Name	Acquisition Strategy – Stand Alone Contract or Basic IDIQ	Small Business or Unrestricted	Estimated Price Range	Anticipated Solicitation Qtr/FY
Construction	Norfolk District Emergency Ops Ctr upgrade	TBD	SB	\$1M - \$5M	1Q FY25
	Holston ANSol Tank Farm D-B Construction	Stand Alone	UR	\$100M - 250M	Evaluating
	Holston Laundry Facility	Stand Alone	TBD	\$10M - \$25M	1Q FY25 Ph1 DB RFP
	Holston Roads	Stand Alone	Sole Source	\$1M - 5M	Awarded
	NASA Wallops Shoreline Protection (Beach/Breakwaters)	Stand Alone	TBD	\$25M - \$50M	1QFY26

* Further Small Business socio-economic set-aside may be determined pending results of market research



INTERAGENCY & ENVIRON. SERVICES (IIES) FY25, FY26 & FY27

Type of Work	Project Name	Acquisition Strategy – Stand Alone Contract or Basic IDIQ	Small Business or Unrestricted	Estimated Price Range	Anticipated Solicitation Qtr/FY
Construction	Holston New Water Intake Facility	Stand Alone	TBD	\$25M - \$100M	1QFY25
	NSWC Carderock V-82 Renovation	Stand Alone	TBD	\$5M - \$10M	FY25
	SCIF Renovations (potentially 1) Hampton Roads Area	Stand Alone	TBD	\$1M - \$5M	FY25
	Holston Outfall 40 and Reservoir Repair	Stand Alone	TBD	\$10M - \$25M	FY26
	Holston ANSol Thermal Destruction Facility	Stand Alone	UR	\$100M - \$250M	FY27

* Further Small Business socio-economic set-aside may be determined pending results of market research



FY25 CIVIL WORKS & OPERATIONS NAVIGATION DREDGING

Type of Work	Project Name	Acquisition Strategy – Stand Alone Contract or Basic IDIQ	Small Business or Unrestricted	Estimated Price Range	Anticipated Solicitation Qtr/FY
Dredging	Thimble Shoal Channel, VA	Stand Alone	TBD	\$5M - \$10M	2Q FY25
	James River Task Order 5	TO	Cottrel	\$1M - \$5M	2Q FY25
	Milford Haven Jetty Repair and Dredging, VA	Stand Alone	TBD	\$1M - \$5M	2Q FY25
	Southern Branch of the Elizabeth River, VA	Stand Alone	TBD	\$5M - \$10M	3Q FY25
	Quinby Creek	Stand Alone	TBD	\$1M - \$5M	3Q FY25
	Little Machipongo Upland Placement Site	Stand Alone	TBD	\$1M - \$5M	4Q FY25
	Winter Harbor	Stand Alone	TBD	\$1M - \$5M	4Q FY25

** Further Small Business socio-economic set-aside may be determined pending results of market research*



FY25 CIVIL WORKS & OPERATIONS DREDGING



U.S. ARMY

Type of Work	Project Name	Acquisition Strategy – Stand Alone Contract or Basic IDIQ	Small Business or Unrestricted	Estimated Price Range	Anticipated Solicitation Qtr/FY
Dredging	Craney Island Eastward Expansion Dredging Main Dike Footprint	Stand Alone	UR	\$50M - \$75M	2Q FY25
	Davis Creek Dredged Material Placement Site, VA	Stand Alone	TBD	\$1M - \$5M	Q1FY25
	Deep Creek, Accomack	Stand Alone	TBD	\$1M - \$5M	Q1FY26
	Parker Creek, VA	Stand Alone	TBD	\$1M - \$5M	Q1FY26
	Starlings Creek Dredged Material Placement Site, VA	Stand Alone	TBD	\$1M - \$5M	Q1FY26
	Tangier Channels, Tangier Island, VA	Stand Alone	TBD	\$1M - \$5M	Q2FY26
	Nansemond River	Stand Alone	TBD	\$1M - \$5M	Q3FY26
	Chincoteague Inlet Beneficial Use of Dredged Material	Stand Alone	TBD	\$1M - \$5M	Q1FY27
	WCV Lewis Creek	Stand Alone	TBD	\$1M- \$5M	Q1FY27

* Further Small Business socio-economic set-aside may be determined pending results of market research



FY25 CIVIL WORKS & OPERATIONS

Type of Work	Project Name	Acquisition Strategy – Stand Alone Contract or Basic IDIQ	Small Business or Unrestricted	Estimated Price Range	Anticipated Solicitation Qtr/FY
Construction	Sandbridge Beach Nourishment	Stand Alone	UR	\$25M - \$50M	4Q FY25
	Lynnhaven River Basin, Phase 2 Wetland	Stand Alone	TBD	\$12M - \$15M	TBD
	Craney Island Project Office Expansion	Stand Alone	TBD	\$1M - \$5M	Awarded
	Craney Island Earth Work	IDIQ SATOC	TBD	\$75M - \$100M	Awarded
	Great Bridge Field Office Construction	Stand Alone	TBD	\$1M - \$5M	1Q FY25
	Norfolk District Pier Renovations	Stand Alone	TBD	\$10M - \$25M	3Q FY25
	Craney Island Ground Improvements	Stand Alone	TBD	\$1M - \$5M	2Q FY26

* Further Small Business socio-economic set-aside may be determined pending results of market research



SERVICE CONTRACTS FY25



U.S. ARMY

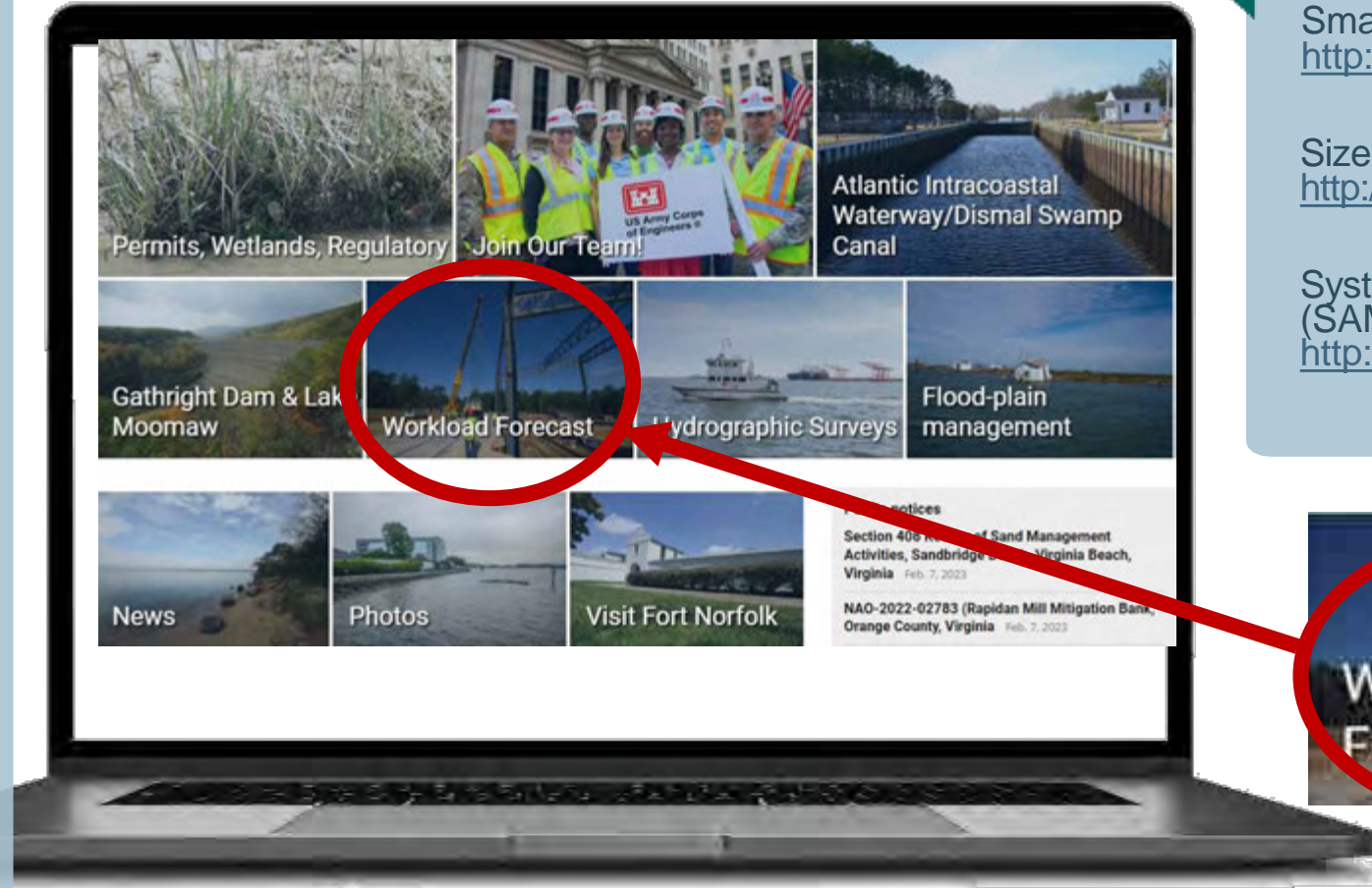
Type of Work	Project Name	Acquisition Strategy – Stand Alone Contract or Basic IDIQ	Small Business or Unrestricted	Estimated Price Range	Anticipated Solicitation Qtr/FY
Service	Atlantic Intracoastal Waterway Facility Services Contract, Great Br, VA	Stand Alone	UR	\$10M - \$25M	Awarded
	Generator Maintenance – Waterfield Bldg	Stand Alone	SB	<\$1M	1Q FY25
	HVAC Maintenance – Waterfield Bldg	Stand Alone	SB	<\$1M	1Q FY25
	Waterfield Bldg Elevator Modernization	Stand Alone	SB	<\$1M	1Q FY25
	Waterfield Bldg Guard Shack Roof	Stand Alone	SB	<\$1M	1Q FY25
	Armed Forces Recruiting Program Janitorial Contracts x 35 sites in VA	Stand Alone	SB	<\$1M	Awarded
	Title/Closing Contract – Multiple Projects	Stand Alone	TBD	<\$1M	TBD
	Gathright Dam Water Sampling	Stand Alone	TBD	<\$300k	1Q FY25
	Gathright Dam HVAC	Stand Alone	TBD	<\$300k	1Q FY25



CURRENT DETAILED PROGRAM BRIEF

HELPFUL HINTS

- **Respond to Market Research Efforts/Sources Sought:** Let us know what you think are important evaluation criteria, technical considerations, high-risk concerns.
- **Stay Engaged!** Reach out to the Contract Specialist, Contracting Officer and/or Small Business Specialist with questions and concerns.
- **Share your best Practices and insights** – we want to know how to be better business partners!
- **Ensure your proposals answer the information requested** in the solicitation and are readable. Information contained is in accordance with FAR 5.404. Magnitude, NAICS, and projected award dates are based on best information available at time of publication. Information is subject to change.
- Requests for market research or solicitations may be found at beta.SAM.gov.
- Visit our website www.nao.usace.army.mil for periodic updates to our program.



KEY RESOURCES

Small Business Administration
<http://www.sba.gov>

Size Standards
<http://www.sba.gov/size>

System Award Management (SAM)
<http://www.sam.gov>



Updated about every 6 weeks

[WWW.NAO.USACE.ARMY.MIL](http://www.nao.usace.army.mil)



Mike Darrow

Deputy District Engineer

Michael.R.Darrow@usace.army.mil

757-201-7112

Katya Oxley

Chief, Contracting

Ekaterina.Oxley@usace.army.mil

757-201-7026

Cherie Kunze

Deputy for Small Business Programs

Cherie.A.Kunze@usace.army.mil

757-201-7077

John Flint

Chief, Military Branch

John.D.Flint@usace.army.mil

757-201-7328

Dave Fedroff

Chief, IIES Branch

David.A.Fedroff@usace.army.mil

757-201-7682

Matt Karlinchak

Chief, Arlington National Cemetery Branch

Matthew.S.Karlinchak@usace.army.mil

703-635-4000

Kimberly Joyner-Banty

Chief, Civil Works Branch

kimberly.g.joyner-banty@usace.army.mil

CONTACT INFORMATION

Jeff Swallow

Acting Chief, Operations Branch

jeffrey.a.swallow@usace.army.mil

757-201-7213

Michelle Hamor

Chief, Planning and Policy Branch

michelle.l.hamor@usace.army.mil

757-201-7491

Alex Gusev

Program Manager, DoDEADesign Center

Alexander.Gusev@usace.army.mil

757-201-7267

Cheryl Fromme

Chief, Engineering

cheryl.l.fromme@usace.army.mil

757-201-7882

Aaron Edmonson

Chief, Construction

aaron.g.edmonson@usace.army.mil

757-201-7220

Sarah Taylor

Chief, Technical Services Branch

Engineering

Sarah.M.Taylor@usace.army.mil

757-201-7478





QUESTIONS?