

Society of
SAME
American Military Engineers



NoVA
Northern Virginia Post





**MERDON
STRATEGIES**

Experience and Capabili



**Christine Merdon, P.E., NAC
CEO/President**

- Former Acting and Deputy Architect of the U.S. Capitol
- NAVFAC White House Military Office
- Private Industry Experience

ABOUT





**PAST PROJECT
EXPERIENCE**



RECENT PROJECT EXPERIENCE

NASEM “Technical Assessment of the Capital Facility Needs of the National Institute of Standards and Technology,” 2023

Scope:

At the request of Congress, evaluate, prioritize, and recommend capital improvements and costs for NIST

SERVICES



Program And Construction Management

Experienced team ready to assist owners with program and construction management needs over the life of the project, or capital program.



Organization And Team Leadership

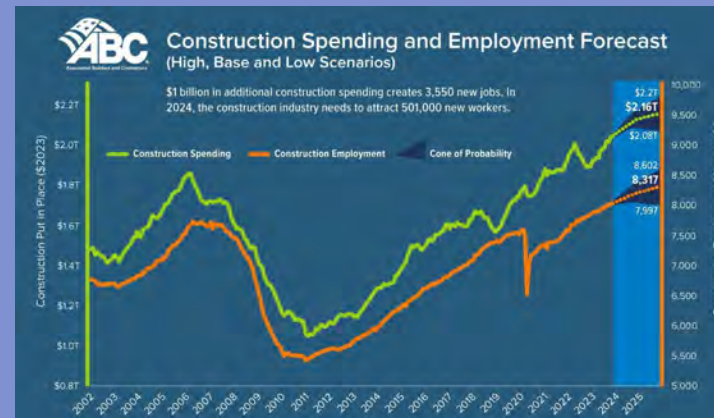
Our expertise involves addressing challenges through strategic team strengthening, optimizing team dynamics.



Owners Advisory's Services

Professional guidance and support to project owners. Including strategic planning, risk management, and decision-making assistance to ensure.

THE PROBLEM



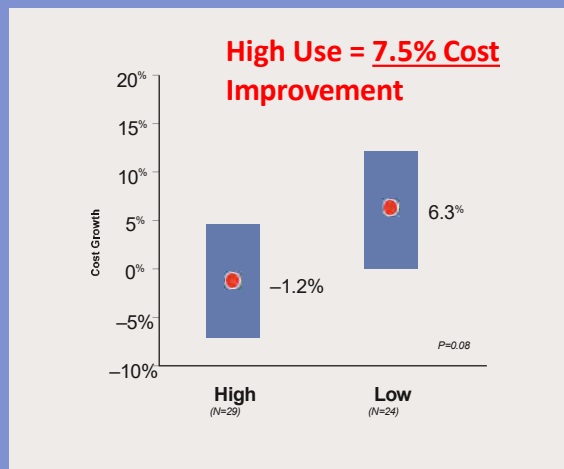


CMAA Alliance with CII

CMAA Cost Management Guidelines - 2018 Edition “To reinforce CMAA’s Best Practices - Best Practitioners alliance with The Construction Industry Institute (CII), this documents refers to several of CII’s Best Practices that directly affect cost management including:

- *Front-end Planning*
- *Alignment*
- *Change Management*
- *Lessons Learned*
- *Project Risk Assessment*

Figure 4 . Comparison of CII Planning Best Practice Use on Cost Performance for Owners



CII Best Practices Handbook Results

2010 CII study concluded that owners should focus on project planning

- Alignment, (Culture, Leadership, Collaboration)
- Front End Planning,
- Planning for Start-up

Owners saw benefit in

- *Cost,*
- *Schedule*
- *and Safety*

UPCOMING



National Institute of
Building Sciences

NIBS Collaborative Project Management

- *Developing Academy and Certification Program*

Participating Organizations

- USACE
- GSA
- FBI
- Veterans Administrations
- Smithsonian
- NAVFAC
- MedStar
- ABC
- AGC

Thank You!

NAICS CODES

- 236220-Commercial and Institutional Building Construction
- 541611- Administrative Management and General Management Consulting Services
- 541618 - Other Management Consulting Services

Contact Information:

Christine Merdon

merdoninc@outlook.com

703-593-1719



Society of
SAME
American Military Engineers



NoVA
Northern Virginia Post



INTRODUCTION TO JOHNSON MIRMIRAN & THOMPSON, INC.



PRESENTED TO:
SAME Northern Virginia Post
OCTOBER 2024





- Civil/Site/Geotechnical Engineering
- Surveys/Utility Location
- Water Resources
- Architecture/Interior Design
- Landscape Architecture
- Structural Engineering
- Mechanical/Electrical/Plumbing Engineering
- Fire Protection
- Permitting/NEPA
- Natural/Cultural Resources
- Construction Management/Inspection
- Project Controls
- Building/Process Commissioning
- Geographic Information Systems
- Information Technology

#61 (ENR)
Top 500 Design Firms



2,400+
Employee
Owners



ISO 9001:2015
Certified

GSA
MAS Contract Holder

Federal DoD Overview

- A/E, Environmental, & CM experience
- Clients
 - NAVFAC
 - Maryland Procurement Office
 - Defense Intelligence Agency
 - Naval Surface Warfare Center
 - Washington Headquarters Services
 - USACE - 12 Districts
 - US Coast Guard
 - US Air Force
 - US Space Force

Federal Civilian Overview

- A/E, Environmental, & CM experience
- Clients
 - Federal Highway Administration
 - General Services Administration
 - Federal Bureau of Investigation
 - National Park Service
 - US Coast Guard
 - Architect of the Capitol
 - US Department of Agriculture
 - National Aeronautics and Space Administration
 - National Oceanographic and Atmospheric Administration
 - US Fish and Wildlife Service
 - Veterans Affairs
 - Bureau of Indian Affairs
 - Environmental Protection Agency

Federal Facilities Design-Build Overview

- Design-build group
 - DOR for 200+ projects with large and small business contractors
- Clients
 - NAVFAC
 - Washington Headquarters Service
 - USACE - 7 Districts
 - Aberdeen Proving Ground
 - Federal Bureau of Investigation
 - Defense Intelligence Agency
 - General Services Administration
 - NOAA Wallops Island
 - Naval Surface Warfare Center
 - Texas Military Department
 - US Fish and Wildlife Services
 - National Institutes of Health
 - US Space Force
 - US Air Force



Corporate Headquarters
40 Wight Avenue
Hunt Valley, MD 21030
410-329-3100

www.jmt.com

Society of
SAME
American Military Engineers



NoVA
Northern Virginia Post





SZPM

CONSULTANTS, INC.

SAME NOVA

B2B

PRESENTATION

October 10, 2024

COMPANY OVERVIEW

- Founded by Suli Wang in 2011
- 40+ employees
- Offices in MD, VA, and DC
- Professional Engineers (PEs) in DC, MD, VA, NY, NJ, FL, GA, VT, and IN



CERTIFICATIONS

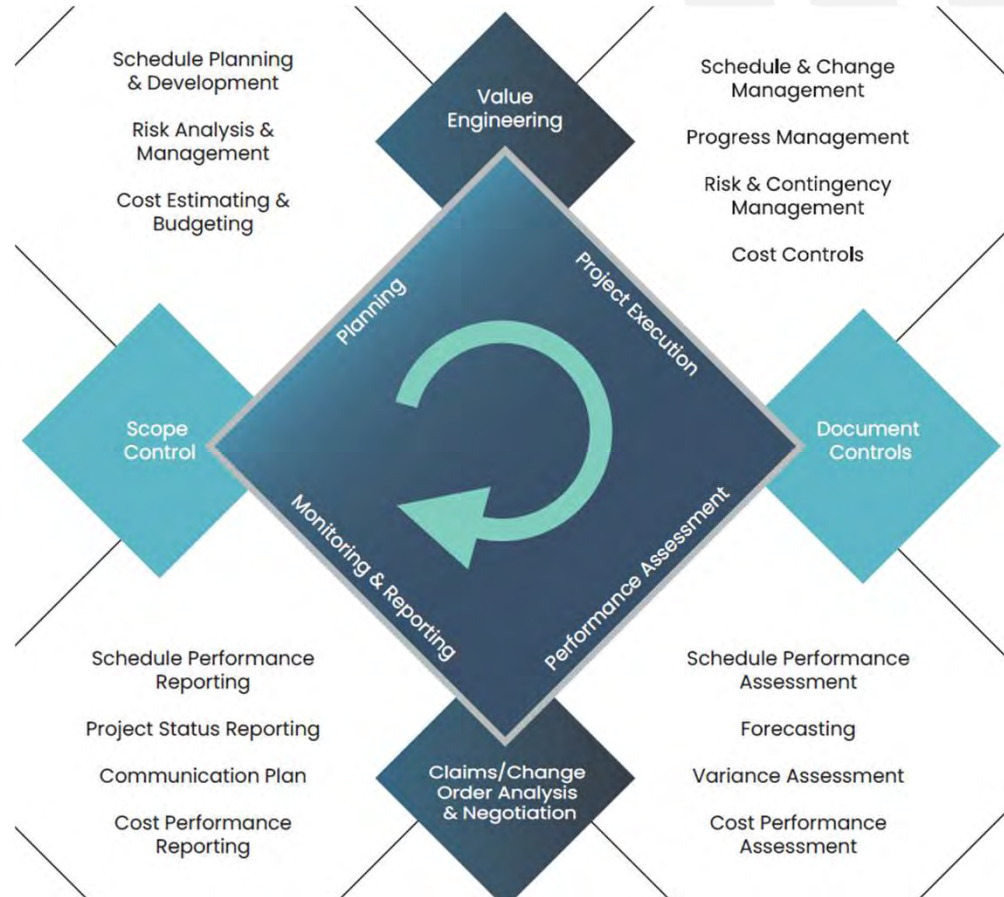
- **SBA** – WOSB/SBE, 8(a) pending
- **DDOT** – CBE/SBE/WBE/DBE
- **MDOT** – MBE/SBE/DBE
- **VA SBSB** – DBE/MBE
- **MWAA** – LDBE
- **SEPTA** – DBE
- **City of Baltimore** – WBE/MBE
- **JTA** – DBE
- **DRPA** – DBE
- **NY MTA** – DBE



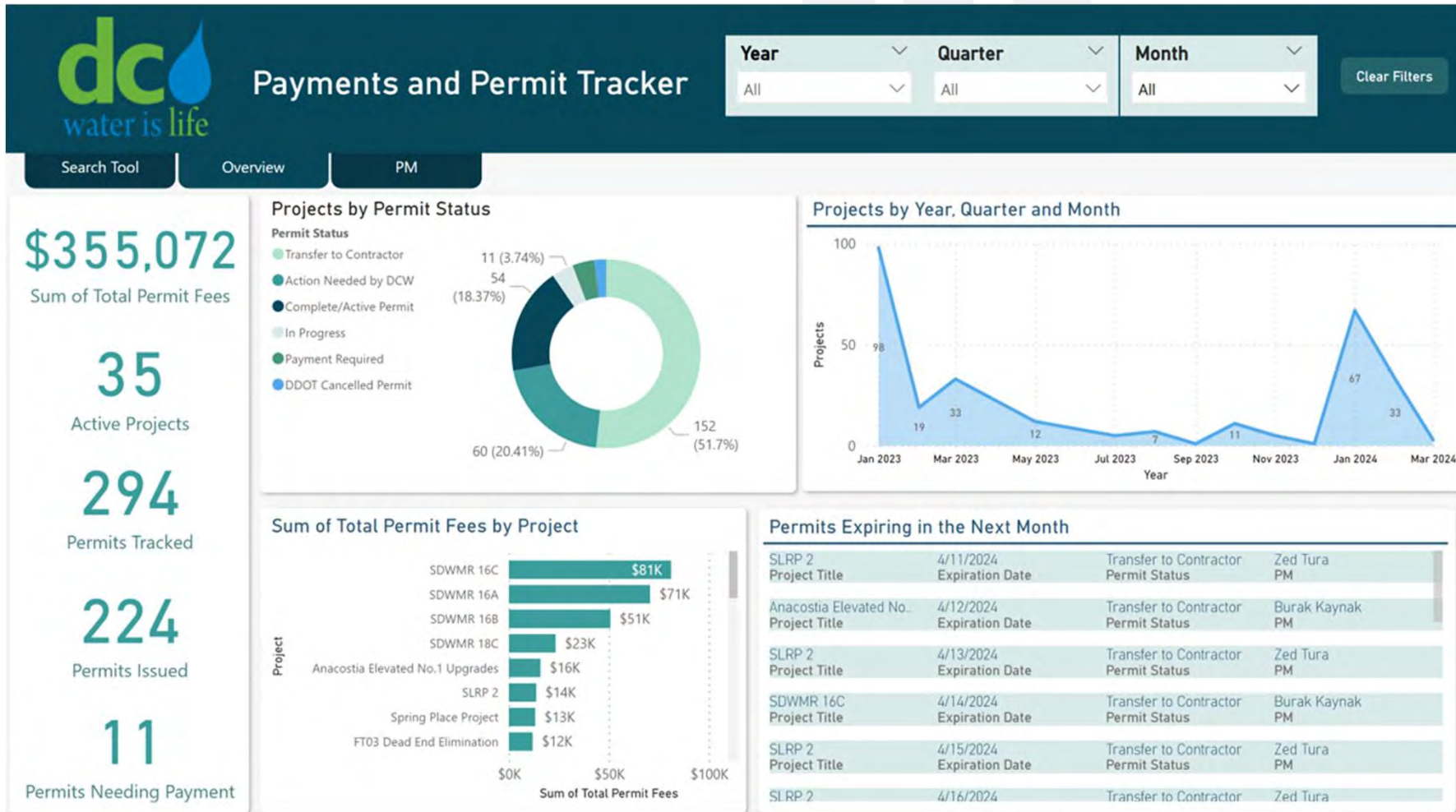
PROGRAM MANAGEMENT



PROJECT CONTROLS



PERMIT SUPPORT SERVICES



CONSTRUCTION MANAGEMENT



WATER / WASTEWATER DESIGN SERVICES



PUBLIC OUTREACH AND STAKEHOLDER ENGAGEMENT



OUR CUSTOMERS

- Architect of the Capitol
- Alexandria Renew Amtrak
- City of Baltimore
- DC Water
- District Department of Transportation
- Jacksonville Transportation Authority
- Maryland Department of Transportation / Maryland Transit Administration



- Virginia Department of Transportation
- Southeastern Pennsylvania Transportation Authority
- Washington Metropolitan Area Transit Authority
- Washington Suburban Sanitary Commission
- Prince William County Service Authority
- USDA Forest Services

RELEVANT EXPERIENCE

- **PM Contracts** for DDOT Anacostia River Waterfront Initiative (AWI), DC
- **PM/CM and General Engineering Consultant** for Washington DC Streetcar Project, DC
- **Design Support Services** for VDOT \$3.6B Hampton Roads Bridge Tunnel Design-Build (D-B) Project, VA
- **Project Scheduling Services** for Rehabilitation of Amtrak's Washington DC Union Station and Baltimore Penn Station Next Generation High-Speed Rail (NGHSR) Renovation Projects, MD/DC
- **Project Management Support and Engineering Services** for MDOT \$5.6B Purple Line Light Rail, MD
- **PM/CM Support Services** for \$110M+ WMATA Rail Tunnel Grouting Program, MD/DC/VA
- WMATA Silver Line Phase II **Civil and Mechanical Inspection, Commissioning and Integration Project**, VA
- Multiple IDIQs for **General AE Services** – WMATA, Washington, DCCM Inspections and Support for \$250M Stormwater Tunnel Dewatering Pump Station and Enhanced Clarification Facility, DC
- DC Water **Permit Process Improvement Services** for DCFA #482 Capital Improvement Program, DC
- DC Water IDIQ for **Condition Assessment** of Major Water and Sewer Mains, DC
- **Water Resources Engineering** for DC Clean Rivers Division C CSO-19 Overflow & Diversion Structures, DC
- **Floodplain Data Collection and Analysis** for DDOT Streetcar Maintenance and Storage Facility, DC
- **Water Planning** Basic Order Agreement (BOA) Washington Suburban Sanitary Commission (WSSC), MD
- Region-wide **Geospatial Database** for Water Infrastructure Assets Intersecting WMATA Right of Ways, DC



OUR INTERESTS

- EXPANDING SUBCONTRACTING OPPORTUNITIES WITH PRIME AE CONTRACTORS
- WOSB PRIME CONTRACT OPPORTUNITIES WITH PARTNERS AS SUBCONTRACTORS
- SMALL BUSINESS JOINT VENTURE PRIME CONTRACT OPPORTUNITIES
- STAFF AUGMENTATION SUPPORT OPPORTUNITIES



SZPM
CONSULTANTS, INC.

WHAT WE BRING TO YOU

- 1. Credentialed Staff**
- 2. Quality Performance**
- 3. Established, Reliable, Responsive**



SZPM
CONSULTANTS, INC.

THANK YOU!



CLEY@SZPMCONSULTANTS.COM



WWW.SZPMCONSULTANTS.COM



Society of
SAME
American Military Engineers



NoVA
Northern Virginia Post





IMEG Consultants Corp.

FIRM OVERVIEW/INTRODUCTION

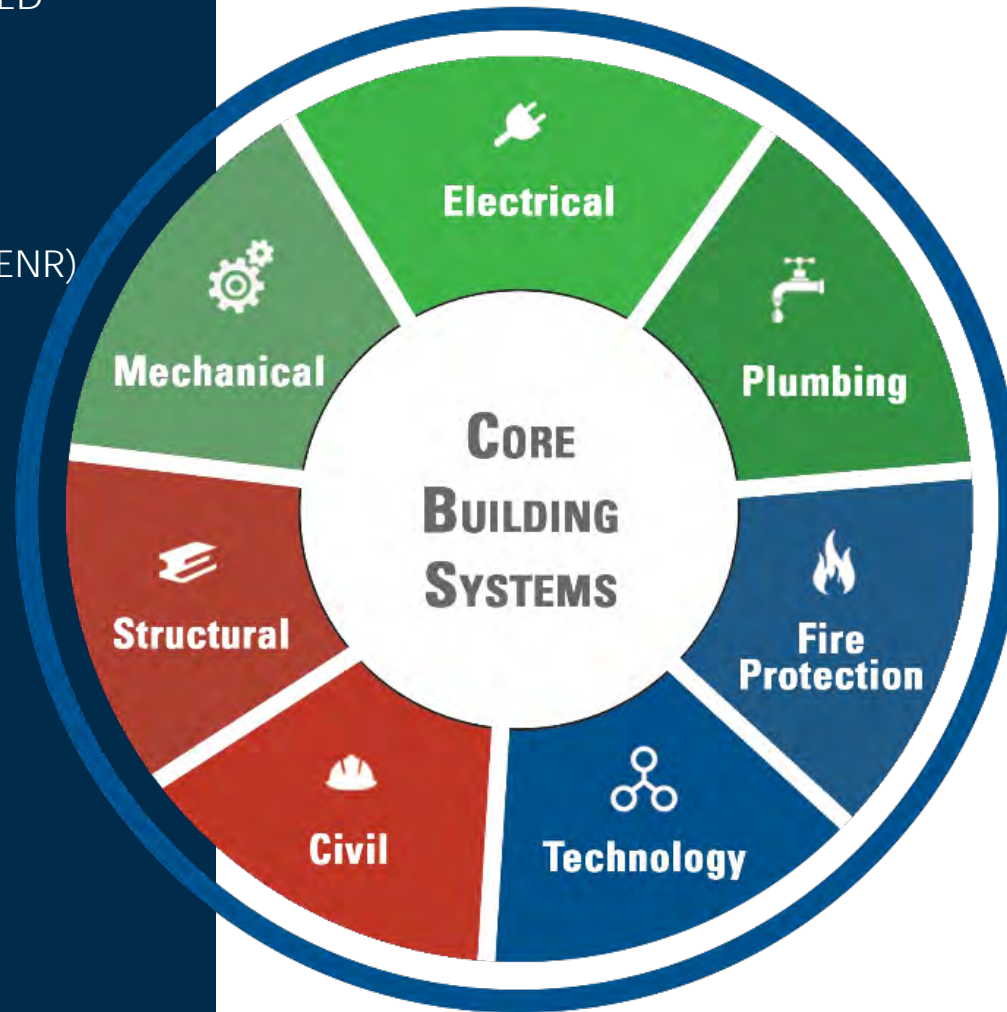


SAME NOVA POST – B2B
OCTOBER 10, 2024

104 COLLECTIVE YEARS
2,800+ EMPLOYEES
U.S. BASED & EMPLOYEE-OWNED
90+ LOCATIONS
700+ LICENSED ENGINEERS
\$425M IN ANNUAL REVENUE
#52 / TOP 500 DESIGN FIRM (ENR)

TOP 10
 ENGINEERING FIRM IN U.S.
 (Building Design + Construction 2022)

IMEG At-A-Glance



BUILDING DESIGN: ENGINEERING & PLANNING

- Structural
- Mechanical
- Electrical
- Plumbing/Piping
- Fire Protection
- Technology Design
- Automation & Controls
- Security Design & Engineering
- Acoustics & Noise Control
- Architectural Lighting
- Medical Equipment Planning
- Building Performance Analysis

COMMISSIONING

CONSULTING & ADVISORY SERVICES

- Intelligent Buildings
- Technology Consulting
- Healthcare Information Technology
- Protective Services Consulting
- Forensic Consulting & Investigations
- Grant Writing

INFRASTRUCTURE: DESIGN & PLANNING

- Civil Engineering
- Municipal Engineering
- Land Development & Surveying
- Environmental Services
- Landscape Architecture
- Materials Testing
- Construction Observation

PROCESS ENGINEERING

- Automation & Controls
- Chemical Process
- Bulk Processing



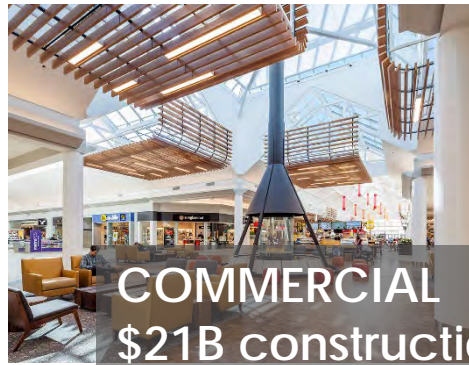
Local Knowledge with National Experience

Office Locations





ARTS & CULTURE
\$1.5B construction value



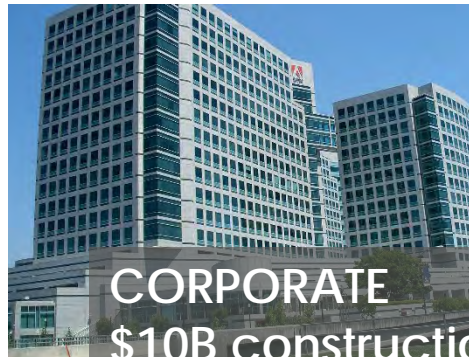
COMMERCIAL
\$21B construction value



EDUCATION
\$90B construction value



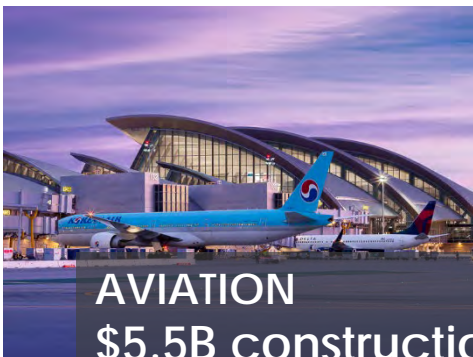
AUTOMOTIVE
\$3B construction value



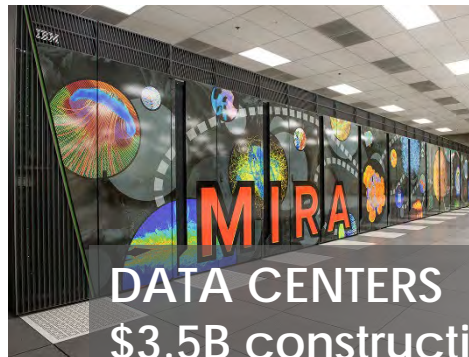
CORPORATE
\$10B construction value



FEDERAL
\$21B construction value



AVIATION
\$5.5B construction value



DATA CENTERS
\$3.5B construction value

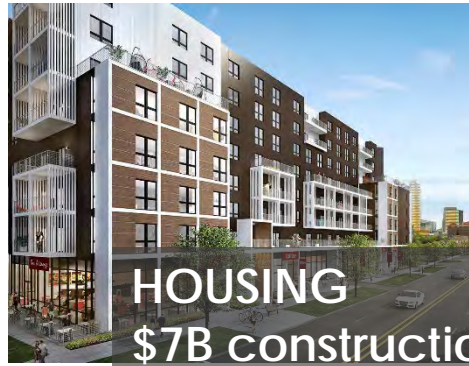


GAMING & ENTERTAINMENT
\$16B construction value

Market Sectors – Construction Values past 10-15 Years



GOV'T – STATE / LOCAL
\$30B construction value



HOUSING
\$7B construction value



SPORTS & RECREATION
\$20B construction value



HEALTHCARE
\$78B construction value



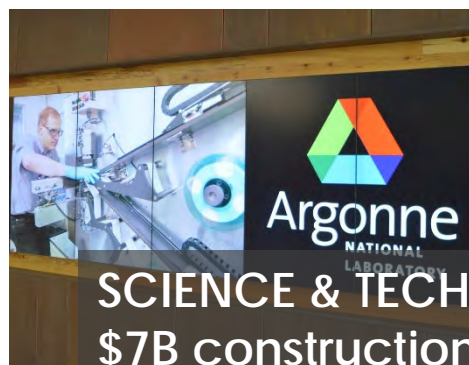
INDUSTRIAL / R&D
\$8B construction value



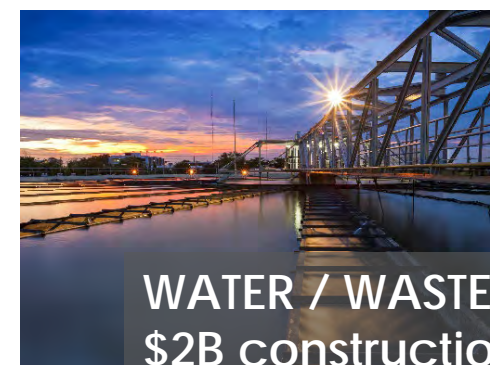
TRANSPORTATION
\$5B construction value



HOSPITALITY
\$10B construction value



SCIENCE & TECHNOLOGY
\$7B construction value



WATER / WASTEWATER
\$2B construction value

Market Sectors – Construction Values past 10-15 Years

Top 20

FEDERAL GOVERNMENT SECTOR ENGINEERING FIRM IN U.S.

- 30+ Year History Supporting Federal Projects
- Supporting **Civilian** and **Military Agencies** Nationwide and Internationally
- 3,800+ Projects Completed
- **DB and DBB Experience** on projects of varying size and complexity

Federal Portfolio Overview



Smithsonian National Museum of African American History and Culture, Washington, DC

WASHINGTON, DC

- › Smithsonian National Museum of African American History and Culture
- › U.S. Coast Guard Headquarters
- › World War I Memorial

VIRGINIA

- › FBI Training Academy, Quantico
- › CIA Building, Langley
- › FBI Central Records Complex, Winchester
- › FBI Field Office, Chesapeake
- › Semper Fidelis Memorial Chapel
- › National Park Service Fredericksburg & Spotsylvania National Military Park
- › Reagan National Airport (DCA)

MARYLAND

- › Intelligence Community Campus (ICC-B)
- › Fort Meade DISA Headquarters Facility
- › Joint Base Andrews
- › Fort Meade

Local Federal
Government Experience



U.S. Coast Guard Headquarters



FBI Central Records Complex

- U.S. Department of State New Embassy Compound, Libreville, Gabon
- U.S. Department of State, New Consulate Compound, Surabaya, Indonesia
- U.S. Department of State Embassy Ambassador's Residence, Managua, Nicaragua
- U.S. Embassy Luxembourg, Luxembourg
- U.S. Embassy, Suva, Fiji
- U.S. Embassy, Mbabane, Swaziland
- U.S. Embassy, Monrovia, Liberia
- New U.S. Embassy Compound, N'Djamena, Chad
- New U.S. Embassy Compound, Reykjavik, Iceland
- U.S. Department of State New Marine Security Guard Residence, Brazzaville, Congo
- U.S. Embassy – Marine Security Guard Residence, San Jose, Costa Rica
- Camp Shield, Baghdad, Iraq
- Camp Mitchell Naval Station, Rota, Spain

International Federal
Government Experience



U.S. Department of State, New Consulate Compound, Surabaya Indonesia



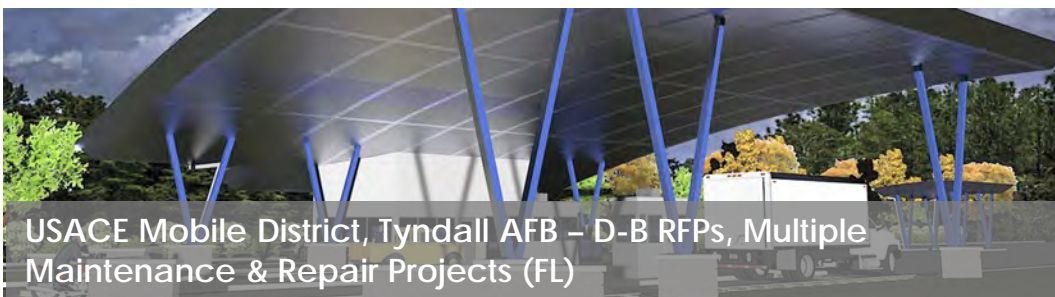
USACE Omaha District, Buckley SFB – Space Based Infrared System (SBIRS) Operations Support Facility (CO)



NAVFAC SE – BEQ, Corry “A” School (FL)



Marine Forces Reserves - MARFORRES Headquarters (LA)



USACE Mobile District, Tyndall AFB – D-B RFPs, Multiple Maintenance & Repair Projects (FL)



NAVFAC SE - Powertrain Transmission Preassembly and CEP (Phases 1-5) (TX)

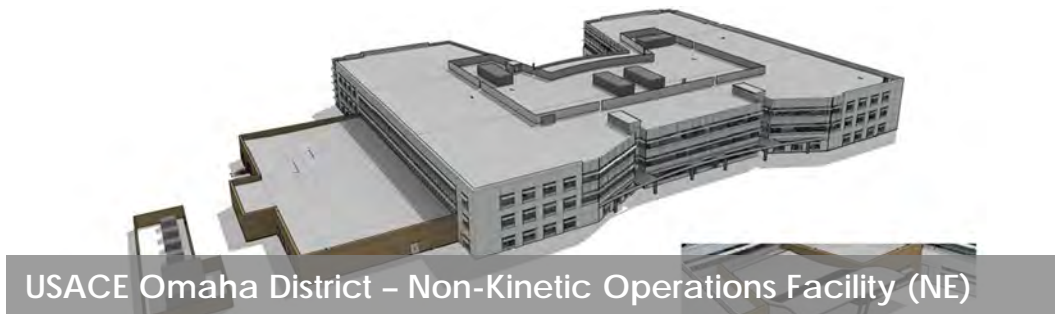




GSA – Frank E. Moss Historic Courthouse Renovation (UT)



National Park Service – St. Louis Arch Museum and Visitor Center Expansion & Addition (MO)



USACE Omaha District – Non-Kinetic Operations Facility (NE)



Dept of Energy – SLAC LCLS-II LEIT (CA)



USACE New England District – VA West Haven New Surgical Clinical Tower Building (CT)





➤ Building Performance & Sustainability

- Building Performance Optimization
- Building Performance Analysis
- Decarbonization
- Sustainable Designs (LEED, Green Globes, Net Zero, etc.)

➤ Intelligent Building Design & Data Analytics

- Technology Infrastructure Design, Systems Integration, Analytics/AI

➤ HIT Advisory Services

➤ Security Consulting





PARTNERSHIPS AND RELATIONSHIPS



Society of
SAME
American Military Engineers



NoVA
Northern Virginia Post



Optimizing Federal Infrastructure

LMI's Expertise in Asset and Engineering Management

Carole Mahady

October 10, 2024

Who We Are

At LMI, we're reimagining the path from insight to outcome at The New Speed of Possible™. Combining a legacy of over 60 years of federal expertise with our innovation ecosystem, we minimize time to value and accelerate mission success. LMI advances the pace of progress, enabling our customers to thrive while adapting to evolving mission needs.

Founded in 1961 to help the Department of Defense resolve complex logistics management challenges, LMI continues to enable growth and transformation, enhance operational readiness and resiliency, and ensure mission success for federal civilian and defense agencies.



LMI Confidential and Proprietary. Not to be copied, distributed, or reproduced, without LMI's permission.

We deliver integrated capabilities that incorporate emerging technologies and are tailored to customers' mission needs, backed by objective research and data analysis.

Our values guide all that we do, reinforced by our commitment to ethics and integrity.

"LMI's talented and hardworking consultants not only solve the government's most complex problems; they do it with integrity. It means nothing if not built on a foundation of integrity."
- Doug Wagoner, President & CEO

LMI was catapulted to the top of the rankings of the Washington Post's 2021 Top Workplaces list in the Largest Companies category and was a recipient of the 2022 Top Workplaces USA award

Infrastructure, Energy, and Environment



Capital Infrastructure and Real Estate Management

- Facilities Asset Management
- Infrastructure Portfolio Planning, Real Property Strategic Asset Management
- Real Property Data Systems
- Real Estate Clearance Services
- Construction Quality Assurance
- Civil Engineering Management
- Initial Outfitting and Transition (IO&T)
- Geographic Information System (GIS)/Geospatial Analysis



Environmental Planning and Compliance

- Environmental Planning/NEPA and Alternative Approaches
- Permitting and Monitoring
- Facilities and Infrastructure Compliance
- Natural Resources Impact Assessment
- Program, Budget, and Task Management
- Environmental Assessments, Wetland Delineations, Jurisdictional Determinations, and Cultural Resource Surveys
- Occupational Health and Safety



Energy, Sustainability, and Climate Resilience

- Energy Planning and Reporting
- Greenhouse Gas Documentation
- Sustainability Best Practices
- Climate-Related Risk Management
- Resilience and Risk Planning
- Energy Data Collection and Visualization
- Energy Supply Chain and Security Analysis

Our Approach leads to Success

Collaboration

- A federal client sought to reduce costs & accelerate projects.
- LMI assessed their capabilities

Data Driven Solutions

- LMI identified improvements to:
- Lower by 20% the cost per FTE/month
 - Deliver 4x the scope at the same time-period

Results Oriented

- 20% lower cost per FTE/month
- Delivering 4x the scope in the same time-period

Innovative Asset & Engineering Management Solutions

Contact Us Today



Carole Mahady P.E., PMP



cmahady@lmi.org

703-917-7254

For more
information



LMI Confidential and Proprietary. Not to be copied, distributed, or reproduced without LMI's prior written approval.

Society of
SAME
American Military Engineers



NoVA
Northern Virginia Post





SAME NoVA Post 9th Annual Business-to-Business Engagement

*October 10, 2024
National Museum of the U.S. Army at Fort Belvoir*



Get To Know Us!

Our Offices:



Chinook Systems is an engineering/construction firm specializing in critical infrastructure. Over the last decade alone, we have delivered over 100 projects, ranging from small data centers to complex multi-phased campuses representing more than **\$1 Billion in construction value**.

The markets we serve include **federal government, institutional, healthcare, higher education, corporate, and commercial real estate**.

Chinook is a Woman-Owned Small Business and a multi-disciplinary solutions provider supporting critical infrastructure on a global scale.

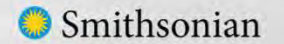
We've remained grounded in our foundation of commissioning & facility management, while providing lifecycle engineering services specializing in cyber-secure, compliant, and energy efficient solutions for complex, mission critical facilities.



Strategic Partners



US Army Corps
of Engineers®





Unique Holistic Approach to Facility Services



Facility
Optimization
Services



Facility
Support
Services



Design-Build,
Engineering &
Construction



Automation
& Controls



Security &
Resiliency



Operations &
Maintenance



Total Facilities Lifecycle Management



Engineering, Repair & Sustainment Services



Facility Repairs & Upgrades

- MEP & Controls Upgrades & Replacements
- Utility Plant Upgrades & Replacements
- Cost Estimating & Capital Planning

Engineering & Design

- MEP & Controls System Design
- Power Studies & Arc Flash Analysis
- Energy Conservation Measures
- As-Built Documentation Review & Development
- Design Document Review

Operations & Maintenance

- Preventive Maintenance Plan Development & Execution
- Corrective Maintenance Service Order Development & Execution
- Computerized Maintenance Management System Administration
- Work Order Management



Facility Optimization & Support Services



Facility Optimization

- Commissioning | Retro-Commissioning
- Ongoing Commissioning & Analytics
- Energy Audits
- Engineering/Forensic Studies
- Systems Assessments
- TAB Services
- Preventive & Corrective Maintenance

Facility Support

- Owner Program & Project Management
- Facility Asset Information Management
- Service/Work Order Management
- Warranty Management
- Quality Assurance/ Quality Control & Construction Surveillance
- Code Enforcement
- Engineering Support
- Project Documentation Coordination & Control



Cybersecurity & Control Systems



Cybersecurity

- OT/FRCS Cybersecurity
- Portfolio-Based Risk Assessments
- Risk Management Framework
- Design Phase Services
- UFGS 25 05 11 & UFGS 25 08 11 Cybersecurity Subject Matter Expertise
- Continuous Monitoring & Change Control Board (CCB) Support
- Multi-Discipline Mission Assurance & Resiliency Assessments
- Physical & Logical Inventory

Controls & Automation

- Controls Upgrades
- Energy Conservation Measures
- Redundancy Projects
- Utility Metering
- Project & Subcontractor Management
- Master Planning, Capital Planning & Cost Estimating



Future Growth and Global Impact

Teaming Partners:

- Seeking **AEC firms** with complementary expertise in **Mission Critical** projects.

Target Markets:

- **DoD, Federal Agencies, Institutional, Healthcare**
- **Domestic and International** growth focus.



Let's Work Together!



Michael Luffred

Program Manager

mluffred@chinooksystems.com

703-398-7796



Guerry Matthews

Director of Client Solutions

gmatthews@chinooksystems.com

919-446-7384

Visit Our Website!



<https://www.chinooksystems.com/>

We work to build and sustain a more resilient nation.

Society of
SAME
American Military Engineers



NoVA
Northern Virginia Post





Leaders in Secure Facilities



COMPANY OVERVIEW

SOLUTION PROVIDERS

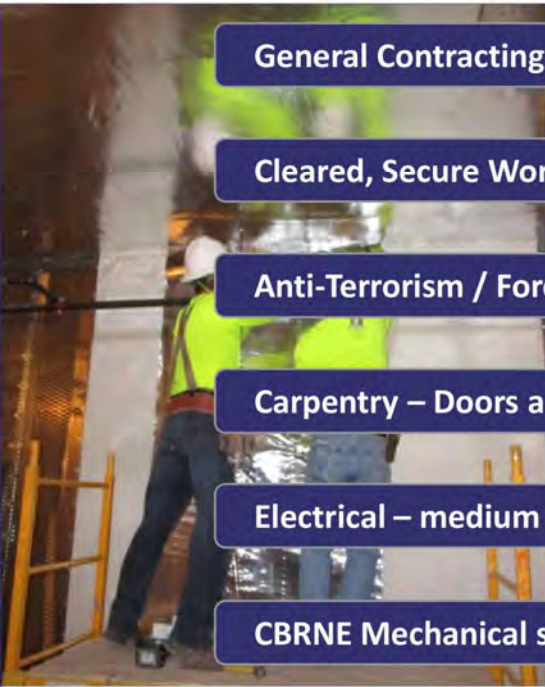
Construction / Design / Design-Build

- *Multiple project delivery methods offer value driven solutions for our clients.*
- *Experienced with Secure Facilities, Occupied Buildings, Pedestrian and Traffic control.*
- *Rapid Response, Mission Critical, and 24/7 services available.*
- *Awarded multiple SATOCs, MATOCs, and Task Orders for IC, DoD, and private sector clients.*

CONTRACTORS and DESIGNERS

- *Architects, Engineers, and Designers*
- *Construction Managers, Project Managers, Health & Safety, QA/QC, Superintendents, and Craft Labor*
- *CONUS and OCONUS resources and capabilities*

CAPABILITIES



General Contracting – CONUS and OCONUS

Cleared, Secure Workforce

Anti-Terrorism / Force Protection systems

Carpentry – Doors and Windows

Electrical – medium and low voltage systems

CBRNE Mechanical systems



Architecture and Interior Design

Mechanical and Plumbing Engineering

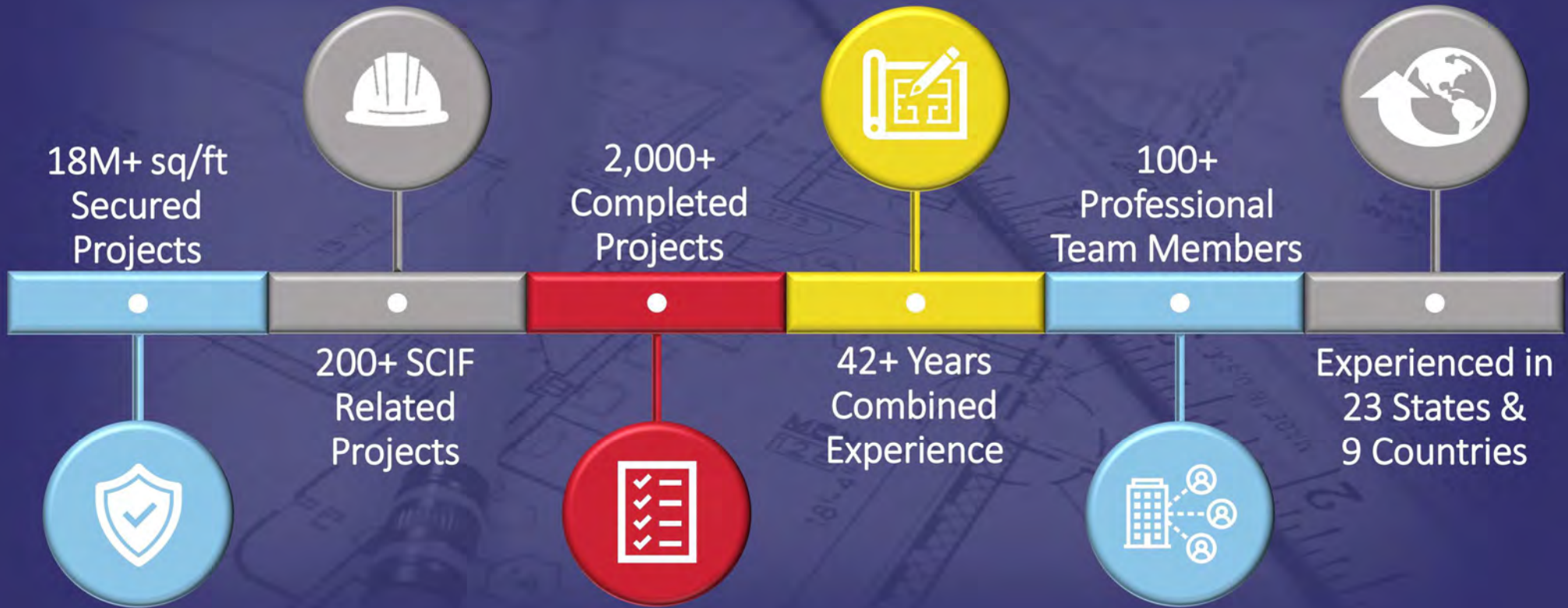
Electrical and Building Automation Systems

Civil, Structural, and Blast Engineering

Fire Protection Engineering

Title II – Construction Administration

PROJECT EXPERIENCE



COMPETENCIES

Secure Facilities

- Intelligence Community
- Department of Defense
- State Department
- Government Agencies
- Commercial Developers
- SCIFs, SAPFs, RF Shielded Enclosures
- Access Control Points
- Secure Campuses
- Remote Military Installations
- Mobile and Modular Facilities

Anti-Terrorism / Force Protection

- Blast, Ballistic, and Forced Entry Windows and Doors
- Building Hardening
- Vehicle Barrier Systems
- Perimeter Security Systems
- Redundant electrical and mechanical systems
- Secure Network Infrastructure
- CBRNE Mitigation Systems
- Air Filtration and Decontamination Systems
- Positive and Negative Pressure Systems

Occupied and Specialized Buildings

- Data Centers and Server Rooms
- Communication Equipment Rooms
- Operation and Command Centers
- Mission Critical Facilities
- Shelter In Place and Safe Rooms
- 24/7/365 Facilities
- Mail Screening Facilities
- Auditorium and Training Rooms
- Emergency and Rapid Response Facilities
- Historic Renovations
- Hospital and Health Care

RAPID RESPONSE EXAMPLE

Guard Booths – Architect of the Capitol

- VIP Entrances with a secure Federal Government Campus
- Entrances to remain open throughout construction
 - Supply and install temporary kiosks and related utilities.
- Install two new Guard Booths and all infrastructure
 - Booths required to meet UL 752 standards.
 - Provide design drawings and specifications for new booths.
 - Remove, destroy, and record all components of existing booths.
 - Innovative approach included pre-fabrication and test fit assemblies off-site to reduce construction duration.
 - Install concrete pads, kiosks, ballistic doors and windows, anti-skid floors, electrical panels, high-efficiency HVAC, stainless steel counters, with advanced intercom and security systems.
 - Modify and tie-in to existing utilities.



EXTERIOR PROJECT EXAMPLE

Building Hardening, Project A

- Design/Build prime contractor
- Fabrication and installation of 400 rated windows and 75 rated doors
- Multiple, high-value, historical federal buildings
- Fully occupied and functional buildings with limited access and no laydown areas
- Exterior work with interior trim and finish scopes of work



representative picture

MODULAR SCIF EXAMPLE

OCONUS Self-Contained, Secure Data Center

- ISO 40' Shipping Container, constructed to ICD 705, TEMPEST
 - Fully Shielded SCIF
 - Surface mounted electrical, mechanical, plumbing.
 - VESDA Fire Alarm, and Clean Agent system.
- Twenty Rack System
 - 10 KW Racks.
 - Below floor, glide system to slide racks in/out.
 - Flex Cable system for maintenance and upgrades.
- Supporting Infrastructure
 - 500KW diesel powered generator.
 - Modular 80 Ton Chiller with N+1 Modules.
 - Skid and chassis mounted for mobility.



SECURE BUILDING EXAMPLE

Phased Project for a SCIF Building

- Design/Build Prime Contractor
- Rapid response project completed in under a year
- Complex secure-building construction of 80,000 sq. ft. Class A SCIF space built to ICD 705 standards
- Large air handling units, building automation systems, and plumbing throughout the location
- Included a 3-story demolition of existing interior walls, ceilings, flooring, mechanical, electrical, plumbing, three large rooftop air handling units, and several rooftop server room dry coolers



representative picture

MULTI-PROGRAM EXAMPLE

Confidential OCONUS Client

- Renovation of 17,600SF, 2-Story Building
- Presence Since 2014
- Designed to UK and US Codes and Criteria/Cert A Process
- Program: Private and Open Offices, VTC/STC Conference, Black/Red Comm Rooms, Rest Rooms, and Support Spaces
- Life-Safety/Areas of Refuge, STC 50
- Self Performed with TS/SCI Designers and Constructors
- Secure Shipping and Logistics
- Other D/B Projects: HOVA Phase 1/2/3; B936D/936M/1045; Fire Penetration Repairs; Duct Cleaning; ICS Fire Alarm Modification; Police Command Center, and EMCS



ELECTRICAL CONSTRUCTION EXAMPLE

USACE Baltimore Task Order #4, Multi-Site Networks

- Project Value: \$5,110,900.
 - Undisclosed, Secure Campus
 - Individual buildings occupied during construction
- Telecomm and Building Controls
 - Labor, equipment, and materials to remove and replace: CAT 5e cable, EMT conduit, pull boxes, fiber cable terminations, patch panels, switches, controllers, panels, backup power supplies, software, and labeling.
 - Scope of work also included design drawings, programming, testing and balancing, commissioning, and final documentation.



Society of
SAME
American Military Engineers



NoVA
Northern Virginia Post





DESIGN-AIRE ENGINEERING

ENGINEERING EXCELLENCE SINCE 1983





ABOUT OUR FIRM



Design-Aire Engineering (DAE) is a prominent consulting engineering firm that was established in January of 1983. Headquartered in Indianapolis, Indiana, DAE has carved a niche as a Service-Disabled Veteran-Owned Small Business (SDVOSB) emphasizing operational efficiency in the design of mechanical, electrical, plumbing, and fire protection systems.



With a legacy rooted in over four decades of engineering excellence, Design-Aire Engineering remains dedicated to its founding principles of integrity, innovation, and client-centricity. The firm continues to evolve with the ever-changing landscape of engineering, staying at the forefront of technology and design to meet the evolving needs of our clients.

40+

YEARS OF
EXPERIENCE

150+

SUCCESSFUL PROJECTS
COMPLETED (PER YEAR)

30+

STATE P.E.
REGISTRATIONS

FIRM PROFILE



NAICS CODES:

- 541310 – Architectural Services
- 541330 – Engineering Services
- 541340 – Drafting Services
- 541690 – Other Scientific and Technical Consulting Services

DUN & BRADSTREET D-U-N-S NUMBER:

- 625257316

SIC CODES:

- Power distribution design
- Lighting design
- Emergency power systems
- Fire alarm systems
- Specialty systems design
- Renewable energy integration

CAGE CODE

- 3SMJ7

UNSPSC CODES:

- 80111614 – Temporary engineering services
- 81100000 – Professional engineering services
- 81101701 – Electrical engineering services
- 81102700 – Instrumented control systems design and engineering services
- 81101516 – Energy or utility consulting service
- 81101523 – Urban design and engineering service
- 83101900 – Energy conservation
- 83101901 – Energy conservation programs

VETERAN-OWNED BUSINESS CERTIFICATIONS:

- Federal SDVOSB
- Indiana Department of Administration
- City of Indianapolis

WHAT WE DO



MECHANICAL ENGINEERING

- HVAC design
- Energy-efficient systems
- Central plant design
- Building automation
- Specialty system design
- Retrofit and renovation services

FIRE PROTECTION SYSTEMS

- Fire sprinkler system design
- Fire alarm system design
- Special hazard fire suppression systems
- Coordination with design professionals

ELECTRICAL ENGINEERING

- Power distribution design
- Lighting design
- Emergency power systems
- Fire alarm systems
- Specialty systems design
- Renewable energy integration
- Site lighting

ENERGY

- Efficiency Audits
- Facility Segregation Studies
- EPACT
- Utility Incentive Programs
- COMcheck Service

PLUMBING ENGINEERING

- Domestic water distribution
- Sanitary waste and vent systems
- Stormwater management
- Gas piping design
- Sustainable plumbing solutions
- Plumbing code compliance
- Medical gas systems
- Compressed Air, natural gas

TECHNOLOGY

- 3D Laser Scanning
- BIM Modeling

PAST PERFORMANCE

- DAE HAS COMPLETED BOTH RENOVATION AND NEW CONSTRUCTION WORK AT OVER (25) VA MEDICAL CENTERS THROUGHOUT THE COUNTRY
- PERFORMED (60) + FEDERAL CONTRACTS FOR THE DEPARTMENT OF VETERANS AFFAIRS, SERVING AS SDVOSB-PRIME/PROJECT MANAGER ON MAJORITY
- SEVERAL ONGOING IDIQ CONTRACTS WITH THE VA, GSA, AND NAVFAC
- + 97% SUCCESS RATE OF DELIVERING PROJECTS BEFORE A DEADLINE IN THE LAST DECADE



Community Living Center Expansion and Renovation
Hunter Holmes McGuire VA Medical Center




Emergency Department Renovation and Expansion (Design)
Washington DC VA Medical Center


GET
IN TOUCH



ENGINEERING EXCELLENCE SINCE 1983

 daengineering.com

 **Home Office:**

 317-464-9090

**2707 Rand Rd
Indianapolis, IN 46241**



Society of
SAME
American Military Engineers



NoVA
Northern Virginia Post



SAME Northern Virginia Post 2024 Business-to-Business Event



CSI RESTORATION SERVICES, LLC



Evan Barman, PE, PMP

Business Development Director

ebarman@bbch-llc.com | (978) 809-8611

bbch-llc.com

What We Offer

BBCH's best value companies provide federal and commercial clients with superior quality and strategic, innovative, and sustainable solutions through our diverse service offerings.

Construction

New construction and sustainment, restoration, and modernization

Civil Works

Civil construction and site infrastructure

Environmental Services

Environmental investigation, remediation, restoration, compliance, NEPA, and natural and cultural resource services

Professional Services

Staffing services to augment federal government agency divisions at the installation and regional level

Restoration

Hydrodemolition and innovative restoration and structural integrity solutions

Fuels Systems

Construction, maintenance, repair, and coatings for fuel storage and distribution systems

Facility Support Services

Broad range of services to support facility needs

Local Self-performance capabilities civil, fuels, environmental, and restoration services

Bonding Capacity:
\$100M per project, \$500M aggregate

High client retention and
long-standing trade partner relationships

Majority of CPARS "Exceptional" or
"Very Good"



Who We Are

- Bristol Bay Construction Holdings LLC (BBCH) is a holding company of Bristol Bay Native Corporation (BBNC)
- BBNC is an Alaska Native Corporation – incorporated in 1972 through the Alaska Native Claims Settlement Act of 1971 –
- BBNC has operations in construction, industrial services, government services, tourism, seafood, and in-region investments



BBCH's brand portfolio includes multiple 8(a), Small, and Large Businesses operating under the Aerostar, CCI, CSI, Herman, and SES Brands.



What Matters to Us

Enriching the Native Way of Life

35% of all BBCH subsidiaries' profits are used to build a sustainable future for over 11,000 shareholders and their descendants. With our support, BBNC provides benefits to the Alutiiq, Dena'ina, and Yup'ik people of the Bristol Bay region in the form of:



Dividends



Education and Training



Jobs and Small Business Start-Up Support



Development and Protection of Resources



Promotion of Cultural Initiatives



Investments Back into the Region



For more information about BBNC, visit bbnc.net.



What We Do

Construction



Construction and site management

- New Construction and Sustainment, Restoration, and Modernization (SRM)
- Demolition
- Structural Systems
- Building Envelope
- Architectural Features
- Building Infrastructure Systems
- Energy Infrastructure
- Exterior and Interior Repairs and Modifications
- Specialty Trade Self-Performance (mechanical, electrical, plumbing)



What We Do

Civil Works



Civil construction and site infrastructure management and self-performance capabilities

- Site Preparation (demolition, excavation, clearing)
- Waterway Dredging, Rehabilitation, Diversion, and Dewatering
- Water Control and Distribution Structures and Infrastructure
- Levee and Dam Construction and Rehabilitation
- Roadway Improvement and Construction
- Embankment and Shoreline Repair, Restoration, and Stabilization
- Underground Utility/Infrastructure (water, sewer, storm)
- Bridge Repair and Construction
- Fencing and Force Protection



What We Do

Restoration Services



CSI RESTORATION SERVICES, LLC

Self-performed hydrodemolition, restoration, and structural integrity services

- Air Barriers
- Caulking and Sealants
- Chemical and Epoxy Grouting
- Concrete Restoration
- Deck Coatings
- Expansion Joint Systems
- Exterior Wall Coatings
- Masonry Restoration
- Marine Repair
- Site Development and Excavation
- Structural Stabilization and Strengthening
- Waterproofing





*Subsidiaries of Bristol Bay Construction Holdings LLC,
a holding company of Bristol Bay Native Corporation,
an Alaska Native Corporation.*

**8(a), Small, and Large Businesses
operating under the Aerostar, CCI,
CSI, Herman, and SES Brands**

www.bbch-llc.com

Society of
SAME
American Military Engineers



NoVA
Northern Virginia Post







*Global integrated
design firm*

100%
Employee-owned

1400+
Professionals

30 Locations
World-wide



UNITED STATES



CHINA



UNITED ARAB EMIRATES

Our Partnerships

We are a trusted partner—delivering multiple projects in multiple locations—for dozens of firms, including Fortune 500s and government agencies. Earning our partners' loyalty is something we take seriously: 80 percent of our work comes from repeat clients.



IDIQ Contracts

- Architect of the Capital AE IDIQ - #AOC19C3002
- GSA Schedule - #GS-29F-0006Y
- GSA Region 9 IDIQ, Zones 2 - #47PK1720D0023
- GSA Region 9 IDIQ, Zones 3 - #47PK1720D0007
- Federal Bureau of Prisons, North Central IDIQ - #DJBPO4020D00000008
- Smithsonian AE IDIQ - #33330221DFC0010130
- Boeing / US Space Command AE Services Maui Space Surveillance Complex - #2021431
- USACE Little Rock District, IDBIO 5.0 for Department of Defense Healthcare Facilities - #W9127S23D6022
- USACE Louisville District AE IDIQ, Military Missions and Civil Works - #W912QR23R0008

DESIGN
EXCELLENCE



*#1 Government Design
Firm (BD World
Architecture 100)*

*650 design awards
since 2008*

*#3 Justice Design Firm
(ENR)*

BUILDING INNOVATION



*T3: Timber, Transit,
and Technology*

*Nearly 3 million SF
across multiple projects*

*11 U.S. and
International cities*

RESEARCH +
WORKPLACE



*Science & Technology
Studio*

*Laboratory Design,
Workplace Trends,
Advanced Technology*

*Adaptive Re-Use and
Renovation*

DIPLOMATIC IDEALS



*US Embassy Design
Program*

*3 million SF of
diplomatic space
designed*

*In 5 countries across 3
continents*

CARE AND HONOR



*Rooted and Specialized
Healthcare Practice*

*40-Year History with
the VA*

*Evidence-Based Design
Advocate Firm*

DEFENSE +
MISSION
CRITICAL



*#1 Justice Facility/Public
Safety Architecture Firm
(BD+C)*

*Integrated Design
Practice*

*Seymour S. Greenfield
SAME Sustaining Member
2023 award-winner*

ENERGY SOLUTIONS



*Knitting Beauty,
Innovation, and
Sustainability*

*4-Megawatt Rooftop
Solar System*

*Optimal PV Layout
Design & Infrastructure*

ELEVATE *the*
HUMAN EXPERIENCE
THROUGH DESIGN

dlrgroup.com

Society of
SAME
American Military Engineers



NoVA
Northern Virginia Post



POND





Introduction to Pond & Company

Established 1965

Full-service A/E Firm

Extensive Federal/DoD Experience

Technology Driven



Pond Core Services

Full-Service / Multi-Discipline Provider across Diverse Markets

Defense & Federal



Competitive Advantages:

- POL Assessment & Design
- Military Facility Planning
- SCIF | Anti-Terrorism - Force Protection | CYBER Expertise

Infrastructure



Competitive Advantages:

- Aviation Design
- Roadway Design
- Bridge Engineering
- Multi-Modal Design Expertise
- State & Municipal Specialist

Energy



Competitive Advantages:

- EPA | Regulatory Driven Services (coatings, inspection, testing, integrity, corrosion)
- Global Design, Construction & Repair Capabilities
- Coatings, Cathodic, Integrity Management

Industrial



KRAIBURG

Competitive Advantages:

- Hazardous & Emission Control Expertise
- P&ID, I&C Capabilities
- Food | Medical | Manufacturing
- BioSafety Labs

AE Services & Primary Capabilities

Planning

Federal Facilities Planning
Project Programming
Infrastructure Planning
Geospatial / GIS
Asset Management
Site Development
Range Planning
Facility Condition Assessments

Architecture

SCIF | AT/FP | Cyber Design
Mission Critical
Life Safety
Space Planning
Renovation / SRM
Interiors | FF&E Selection
Landscape Architecture

Engineering

Electronic Security
Dynamic Blast Analysis
Communication Engineering
POL / Fueling Design
MEP Engineering
Fire Protection
Structural Engineering
Civil Engineering
Energy Assessments
Process Engineering
Construction Management

Best-in-Class Specialty Services

Specialty – Fuels Infrastructure / Asset Integrity

Complete Project Life Cycle of Services

- Fuels Master Planning
- A-E Multi-Discipline Design
- Construction Management
- Recurring Maintenance & Minor Repair Regulatory Compliance
- Corrosion Control
- Cathodic Protection
- Coatings and Metallurgy
- Integrity Management
- Compliance and Asset Management



200+ Energy Professionals

Market Impact

- Fuels expansion and Pacific utility resiliency planning
- Europe Infrastructure SRM & MILCON initiatives
- Project Planning Studies for Requirement Development
- Integrity Management Plan (IMP) updates
- Recognized RMMR expert
- Commercial airline & logistics aviation expert
- Trusted advisor with JET Infrastructure

Client Testimonial USACE Huntsville:
"Pond is HNC's go to contractor for RMMR".

Strong Client Portfolio



Asset Integrity Services

Pond's integrity and corrosion engineers are highly trained to identify potential damage mechanisms and apply the proper methodology to adequately characterize and evaluate an asset for continued integrity.



One of three (3) A-E companies worldwide that holds an AMPP Coatings Inspection Accreditation (QP-5)



Kings Bay Dry Dock Renovation

Highly Trained and Experienced Team

3 PHDS	23 AMPP COATING INSPECTORS	25 CORROSION ENGINEERS	20 CORROSION TECHNICIANS	5 PROTECTIVE COATING SPECIALISTS	18 API INSPECTORS 510/570/653/1169
------------------	--	-------------------------------------	---------------------------------------	--	---

Best-in-Class Specialty Services

Specialty - Sterilization & Emission Control



Process Engineering



Medical/Pharma



Emission Control



Medical Sterilization

Market Impact

- Recognized sterilization experts
- Recognized emissions control experts
- New and recurring Blue-chip contracts
- Regulatory services strategic initiatives
 - Certified Industrial Hygienist
 - Cleanroom Selling and Service Specialist
- Process engineering
- FDA – Initiated discussions with Pond on impacts of pending EPA rules

Customer Trusted Consultants

- Process Engineering (Niche Specialty)
- All A-E Design Disciplines
- Project Controls, Scheduling & Estimating
- Construction Management
- Environmental & Safety
- Startup & Commissioning
- Regulatory Compliance - EPA, FDA, OSHA

Modulated Air Control – Trade Secret



Project Locations

Blue-chip Recurring Clients



Best-in-Class Specialty Services

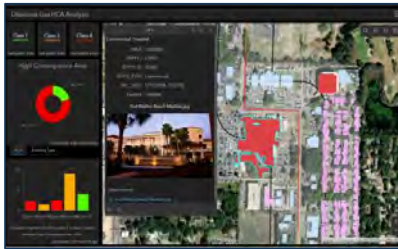
Specialty – Federal Planning



Planning



Geographic Information System (GIS)









Asset Management

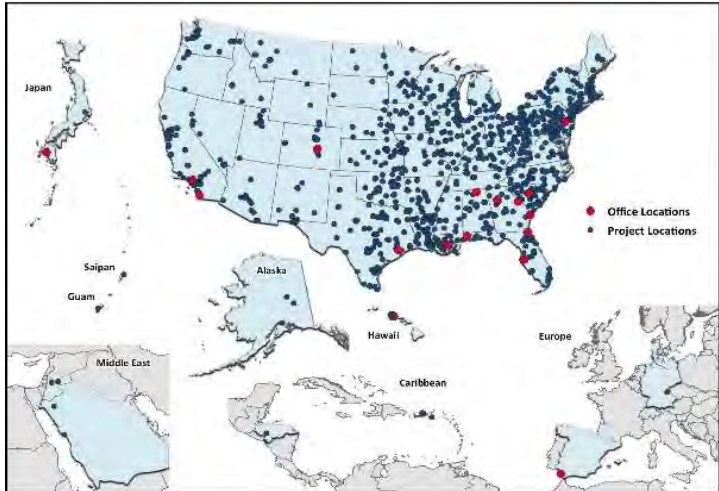
Military Planning Services put Pond at the tip of the spear. All military requirements come out of planning. From there we position for design work.

Cradle-to-Grave Offerings

- Federal Facilities Planning
- Project Programming
- Infrastructure Planning
- Facilities and Infrastructure Asset Management
- GIS Development, Data Acquisition, and Analysis
- Application Development

Emerging Market Presence

<p>PMO lead for all Electrical Vehicle Charging Station Planning services for the Army, world-wide</p>	<p>\$49M MATOC IDIQ contract to support USACE in Installation Energy & Water Plans Development</p>	<p>\$150M Huntsville USACE P&P Contract \$24M Middle East District USACE P&P Contract</p>	<p>USAF Pacific Theater Planning - Leading Planning efforts throughout Indo-Pacific</p>	<p>AMC Master Planning and Recap program U.S. Army Poland Facility Requirements Analysis</p>	<p>USSF THANOS Program Integration Office – Support to Space Launch Delta 45</p>
	 <p>US Army Corps of Engineers®</p>	 <p>US Army Corps of Engineers®</p>		 	



Geographic Resume



POND

We earn the trust that sets us apart.

Society of
SAME
American Military Engineers



NoVA
Northern Virginia Post





Dan Schall
Dschall@nawrecking.com
410-428-1844



WHO WE ARE

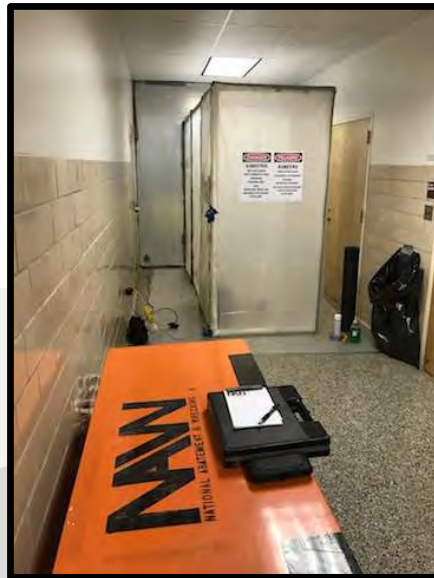
- Established in 2017
- Spun off from an interior demolition company
- Locally owned and managed
- Turn-key wrecking, demolition and abatement services including site preparation and grading
- Government, Institutional, Healthcare, Airport, Commercial and Historic Building Renovation experience
- Licensed in Maryland, Washington, DC, and Virginia





ABATEMENT AND REMEDIATION

- Asbestos and lead abatement using the most innovative and efficient practices in the industry
- Mold remediation performed within the standard defined by US EPA and IICRC S520 Standard and Reference Guide for Professional Mold Remediation





WRECKING

- Turn-key wrecking and demolition services
 - Federal (USACE/NPS)
 - Commercial (JPMorgan Chase)
 - Residential (DMV)





SITE SERVICES

- Site preparation and grading
- Erosion and Sediment Control





QUESTIONS?

Dan Schall
Dschall@nawrecking.com
410-428-1844

Society of
SAME
American Military Engineers



NoVA
Northern Virginia Post





**THANK YOU FOR YOUR CONTINUED SUPPORT OF
THE SAME NOVA POST!**

**Please watch for emails, Post Newsletter, Social
media posts!**

**Check out our website for future events and
VOLUNTEER TODAY!**

www.classic.same.org/NOVA



Photo By Duane Lempke



SPECIAL THANKS TO OUR POST'S 9TH ANNUAL BUSINESS-TO-BUSINESS (B2B) ENGAGEMENT SPONSORS

