

1/23/2025

Society of American Military Engineers

Letticia M. Neal, P.E.

County Engineer



Letticia.Neal@PierceCountyWa.gov



253-798-7041

Steve Hartwig, P.E.

Utilities Manager



Steven.Hartwig@PierceCountyWa.gov



253-798-3930

Planning & Public Works Overview



Planning and Public Works is an APWA accredited agency and responsible for the planning, design, construction, operations, and maintenance of the following infrastructure systems:



Airports



Solid Waste and Recycling



Ferry



Stormwater



Roads and Bridges



River Levees (Flood Control)



Sanitary Sewer



Water Utility

Planning & Public Works Overview



PPW accounts for approx. 25% of County positions

- 840 Full Time Equivalents (FTE) authorized in 2025



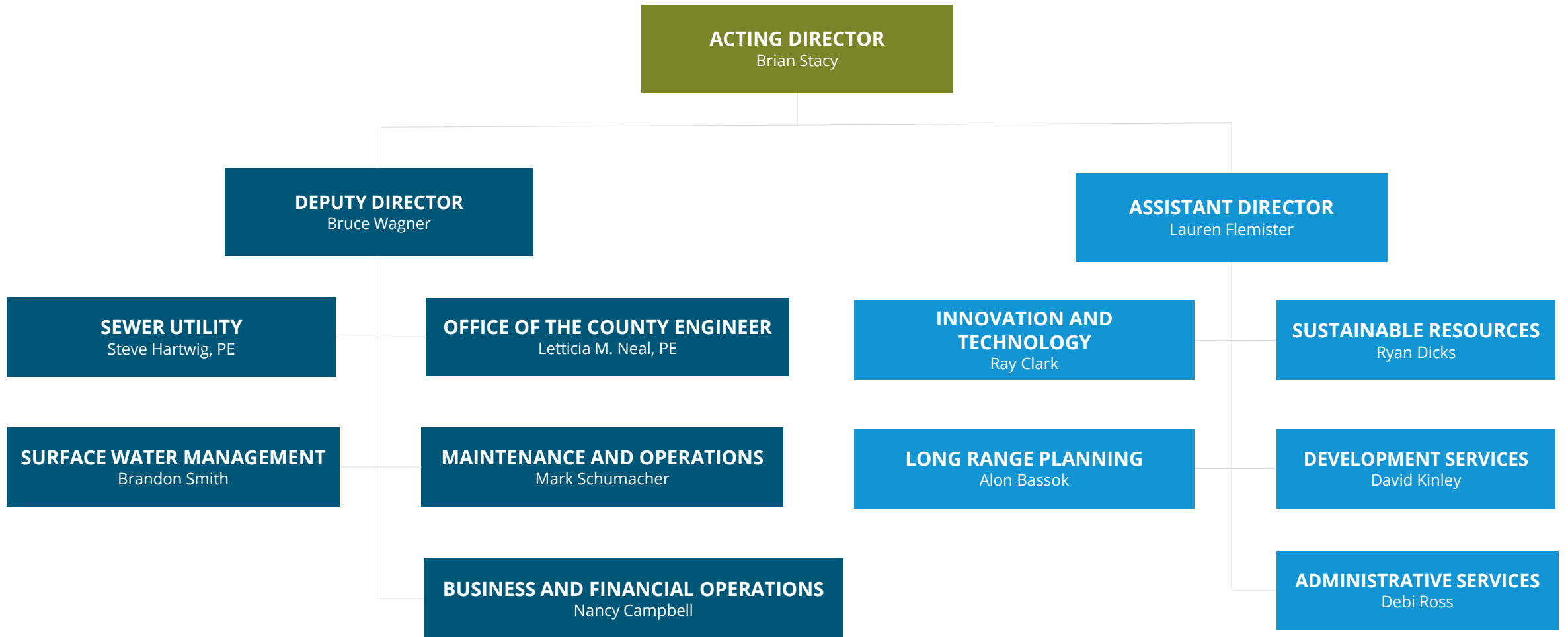
PPW budget is approx. 33% of the total County budget

- \$1.1B for 2024-2025
- \$937M for 2022-2023





Planning and Public Works





Construction Innovation

Point Fosdick Drive

Stone Drive NW to 36th Street NW

- Won WAPA award for 2023 Paving Innovation - Western Washington.
- Overlay project involved a complex three-part process
- Nearly 50,000 tons of asphalt was placed on more than a mile of roadway surface.



Photo Credit: Natural Systems Design Inc.

Swan Creek Restoration

The project will build engineered log jams to restore sediment and stabilize the creek. A variety of equipment and methods are necessary including:

- Helicopter delivery of over 250 tons of Large Woody Debris.
- Placement of about 100 engineered log structures consisting of over 800 Large Woody Debris pieces.
- Hand crews are needed for delivery of material and construction in sensitive or constrained reaches.
- Mini excavators can assist in-channel work in certain reaches.

Upcoming Large Projects

[Open.PierceCountyWa.Gov](https://www.open.piercecountywa.gov)

Golden Given Road E and 99th Street E Mini Roundabout - \$1.6M

- Compact roundabout for lower traffic volumes and speeds
- Project is anticipated to go to bid 2025

122nd Avenue E – 136th Street E to 146th Street Court E - \$24.5M

- The first project of three to increase traffic capacity and improve safety through this area
- This project is anticipated to go to bid 2025

Swan Creek – 64th Street E Stream Bank - Phase 1: \$2.8M, Phase 2: \$1.5M

- Address stream bank/bed erosion and improve salmon habitat using engineered logjams
- Phase 1 of the project is anticipated to go to bid 2025
- Phase 2 of the project is anticipated to go to bid 2026



Upcoming Large Projects

[Open.PierceCountyWa.Gov](https://open.piercecountywa.gov)

208th St. E./Mountain Highway Extension (\$16M)

- Regional lift station, approx. 4,000 linear feet of sewer main and interceptor, and approx. 4,000 linear feet of force main
- Project is anticipated to go to bid in 2025

Woodland Pump Station & Temp. Force Main (\$14M)

- New regional pump station, approx. 4,100 linear feet of temporary force main, and approx. 7,300 linear feet of sanitary sewer main and interceptor
- Project is anticipated to go to bid in 2025

Day Island System Replacement (\$19M)

- Replace the existing pump station and collection system with a new low-pressure collection system
- Project is anticipated to go to bid in 2026

Concrete Pipe Rehabilitation Phases 1 - 2 (\$20M)

- The first two of several consecutive project to rehabilitate, repair, and/or replace existing concrete interceptors throughout the Pierce County Sewer System
- Project is anticipated to go to bid in 2025 and 2028

Parkland/Brookdale Interceptor Phases 5 – 6 (\$31M)

- A continuation of a multiphase extension of the 72” diameter Parkland/Brookdale interceptor that will provide capacity relief for the existing interceptors that currently serve the upstream basins
- Project is anticipated to go to bid in 2026 and 2028

Procurement Opportunities

What's new with Procurement in Pierce County?



100% Electronic Bidding with OpenGov using Zoom Bid Openings



DocuSign used for collection of signatures



Invoices can be paid by Automatic Clearing House (ACH) to your bank of choice



PPW department leadership focused on streamlined processes and consistency across programs

PPW's 2024-2025 Capital Program is **\$301M**

- **\$81M Design**
- **\$211M Construction**
- **\$8.6M Program Development**

MRSC Rosters

Pierce County also uses MRSC Rosters (available online at MRSCRosters.org) to send out notifications of procurements, so registering your company will help you to gain maximum exposure to Pierce County procurements.

Small Works Roster, Unit Priced Bids and Purchased Services

Department-Wide

General Construction
Sewer and Water Construction Services
Roofing & Sheetmetal; Roofing Install and Repair
Civil Construction, Demo and Abatement Services
Electrical Services
Heavy Equipment Services
Laboratory Services
Vector Truck Services

Concrete Mobile Mix Delivery
Auto and Truck Body Painting
Painting and Coating Services
Aggregate Heavy Hauling Trucking Services
Elevator Services
Facilities - Airport
Hangar Door Support Systems Installation

Marine Services - Ferry

Marine Electrical Services
Marine Engine Maintenance and Repair (currently out to bid)
Marine Fire Inspection Services for Vessels
Passenger Boat Services

Road Maintenance

Pavement Scanning Services



Questions about procurement process?

Email us at:

PCPWContractServices@PierceCountyWa.gov



For project info, visit our website at: PierceCountyWa.gov/PPW

- or -

[2024-25-PPW-Capital-Improvement-Program](https://PierceCountyWa.gov/PPW)

Thank You!

PierceCountyWa.gov/PPW

Letticia M. Neal, P.E.

Letticia.Neal@PierceCountyWa.gov

253-798-7041

Steve Hartwig, P.E.

Steve.Hartwig@PierceCountyWa.gov

253-798-3930



**PLANNING & PUBLIC
WORKS**